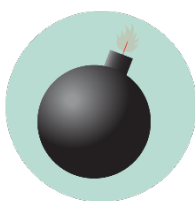


# CHESTNUT HALL EMERGENCY GUIDELINES

**Call or text 911 in life threatening emergencies**



**FIRE**



**BOMB THREAT**



**GAS  
LEAK**



**HAZMAT**



**SEVERE  
WEATHER**



**HAZMAT**



**MEDICAL  
EMERGENCY**



**ACTIVE  
THREAT**

## Evacuation

**PROMPTS: Fire alarm, direction from the UNT Police or City of Denton Fire Department, an Eagle Alert, a visibly life-threatening situation**

- Gather those around you and quickly leave through the nearest exit.
- Ask those around you with limited mobility if they need help and provide assistance, as able.
- If you take notice of someone unable to evacuate, note their location and tell first responders as soon as possible.
- Those with access and functional needs should immediately go to the nearest fire refuge area and call 911.
- Move at least 200 feet away from the building and stay off fire lanes.
- Comply with directions from first responders.

## Shelter

**PROMPTS: Eagle Alert, Outdoor Warning Sirens**

- Go indoors immediately.
- Seek shelter on the lowest level of the building, away from windows and exterior walls.
- For tornadoes: Encourage others to shield their head and neck with arms and putting material such as furniture and blankets around themselves.
- If the event is HAZMAT related, completely turn off or seal off all external air sources including windows, doors, and air vents.
- Stay in shelter until an Eagle Alert is sent telling you it's safe to leave.

## Respond to a Medical Emergency

- Call 911 (or have someone call 911 for you).
- Send others to get an AED and to meet first responders at the door.
- Ask the individual if you have their permission to assist them.
  - If **YES**, provide first aid to the extent that you feel able.
  - If **NO**, move away from the individual and wait for first responders.
  - If **unconscious**, you have implied consent to provide assistance, as long as you are not negligent.
- Assist paramedics as needed when they arrive.
- Gather info and report the incident to Risk Management Services.

## Run. Hide. Fight. (Active Threat)

**PROMPTS: Eagle Alert; successive, loud shot noises; groups of individuals running and screaming**

- **RUN** and escape the active threat if possible.
- **HIDE** from the active threat if escape is not possible.
- **FIGHT** the attacker as a last resort and commit to your actions.

## CAMPUS EMERGENCY CONTACTS

<p><b>Any life-threatening emergency</b> Active threat Acts or threats of violence Bomb threat Fire Hostage situation Life-threatening hazardous materials release Medical emergencies Natural gas leak Suicidal person Violent civil disturbance or demonstration Violent/threatening/hostile individual</p>	<p><b>911</b> <i>Call or text 911 in life-threatening emergencies</i></p>
<p><b>Any non-emergency concerns</b> Civil disturbance or demonstration Disruptive person Elevator failure Suspicious person</p>	<p><b>UNT Police</b> 940-565-3000</p>
<p><b>Maintenance-related issues</b> Power outage Water leak or flooding Property damage</p>	<p><b>UNT Facilities</b> 940-565-2700</p>
<p>Minor hazardous materials release</p>	<p><b>UNT Risk Management</b> 940-565-2109</p>

**If you are unsure if a situation is or is not an emergency, always call 911.**

# CHESTNUT HALL EMERGENCY LOCATIONS AND SUPPLIES



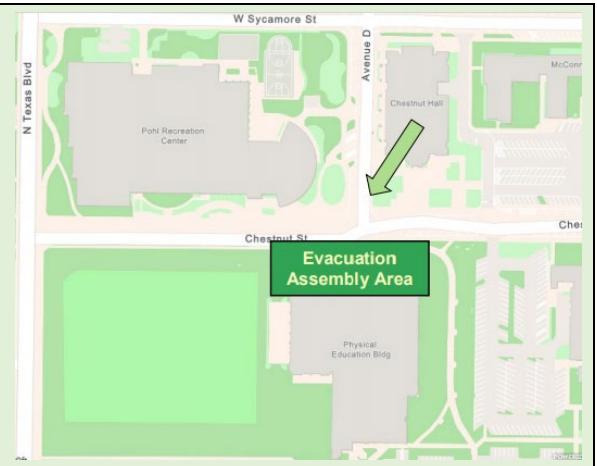
## **Shelter Areas**

- First floor interior hallways
- Rooms 120A and 120B

## **Evacuation Assembly Area**

## **Evacuation Assembly Area**

- Across Chestnut Street in front of the PEB.
- If transportation is needed to get individuals off-site, call 911 and UNT Police (940-565-3000).
- **Note:** Never put yourself in danger during an evacuation.



## **Medical Emergency Related Equipment**

- First Aid Kits: Treatment Area, Room 234
- AEDs:
  - First floor by the elevator
  - Second floor by the treatment area
  - Third floor by the elevator



## **Special Emergency Procedures for Chestnut Hall: Biohazard Cleanup**

Following the OSHA Bloodborne Standard, UNT has established specific protocols for blood, other bodily fluids, and other potentially infectious materials (OPIM) cleanup. The protocols begin with ensuring that any worker who will be involved in the cleanup of blood, bodily fluids, or OPIM have proper (and up to date-annually) remediation training (Bloodborne Pathogen and Exposure Control Training-BBP/ECP).

If you have not been trained on biohazardous cleanup, are not current on your training (BBP/ECP), or do not have the proper PPE, DO NOT attempt clean-up and removal. Please contact Risk Management Services (940-565-2109) for assistance. Workers without current BBP/ECP training must not participate in biohazardous waste cleanup. If you have received proper training and are equipped to perform biohazardous waste cleanup, please refer to [this guidance \(https://bit.ly/UNT-BioWaste-Guidelines\)](https://bit.ly/UNT-BioWaste-Guidelines).



**Fire Refuge Areas:** A temporary haven from the effects of a fire or other emergency that would normally require evacuation.

- Both building stairwells are designated fire refuge areas

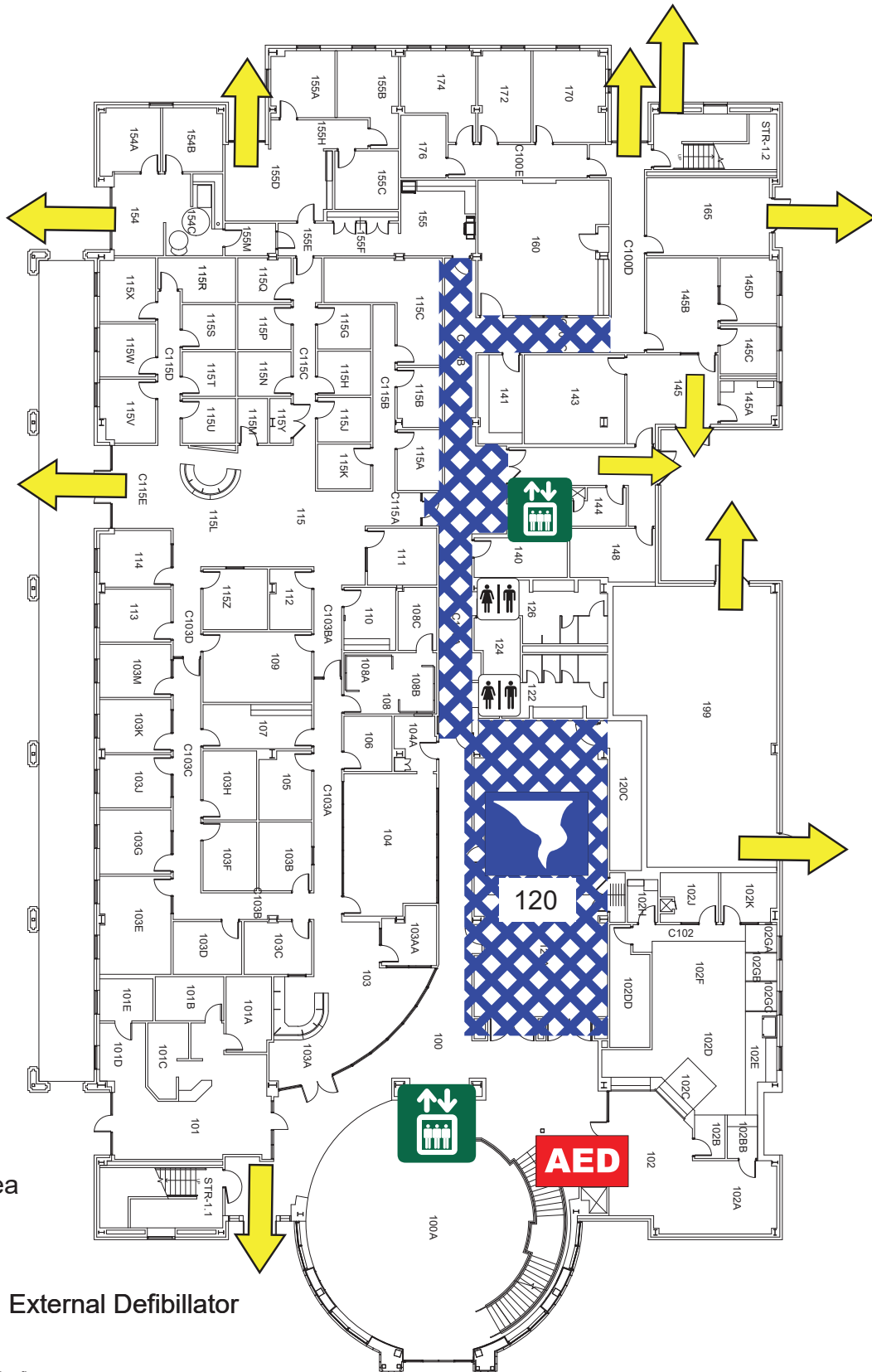
### Fire Extinguisher Locations

Floor	Location	Room #	Description
	Optical Clinic	101	Reception
	Money Management	107	Work Room
		108	Break Room
		110	Break Room
		115F	Storage Room
		115M	Storage Room
		155E	Hallway
	Dental Office	154	Reception
	Electrical Closet	165	Near Northeast Exit
	Materials Management	145	Receiving Area
Mechanical Room (x2)	199	Outside Loading Dock & Basement of Mechanical Rm.	
<b>2nd Floor</b>	Clinic/HIM	295	Lab
		288	Break Room
		North 276A	Nurse Station/Fax Room
		Central 247A	Nurse Station/Fax Room
		261	Soiled Utility
		263	Sterile Supply
		South 223A	Nurse Station/Fax Room
		210F	HIM (Record room on S wall next to 210F)
		210F	Southwest Corner on Wall
<b>3rd Floor</b>	Administration	302 H	Admin. Suite
	Elevator Control	320	South Side
	Meadows Center Main Hall	301	Reception
	Meadows Center	301 G	Electrical
		313 H	Behind Front Desk
	Student Counseling Center	311	Reception
	Student Counseling Center	Back Hallway	Located on Wall in Back Hallway by Back Door
	Elevator Control	319	North Side
	Soiled Utility	322	North Side
	Employee Breakroom	324 B	Northeast Corner of Building
Air Handler	399	AHU	



# CHESTNUT HALL

## FIRST FLOOR PLAN



### LEGEND



Shelter Area



Exit



AED Automated External Defibrillator



Elevator

Do NOT use an elevator in a fire

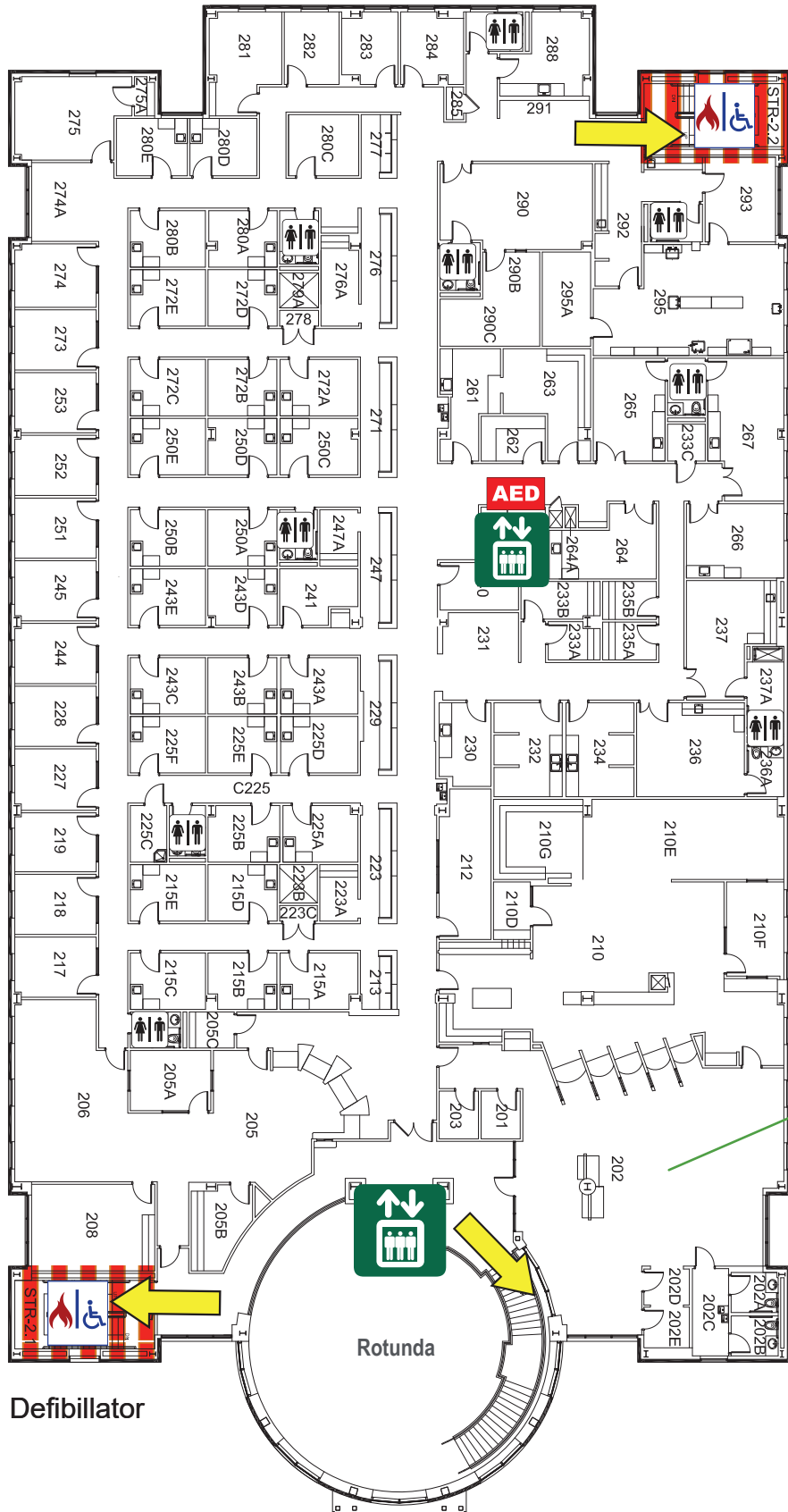


Restrooms



# CHESTNUT HALL

## SECOND FLOOR PLAN



Student Health & Wellness Center Reception Area

### LEGEND



Exit



AED Automated External Defibrillator



Elevator  
Do NOT use an elevator in a fire



Restrooms

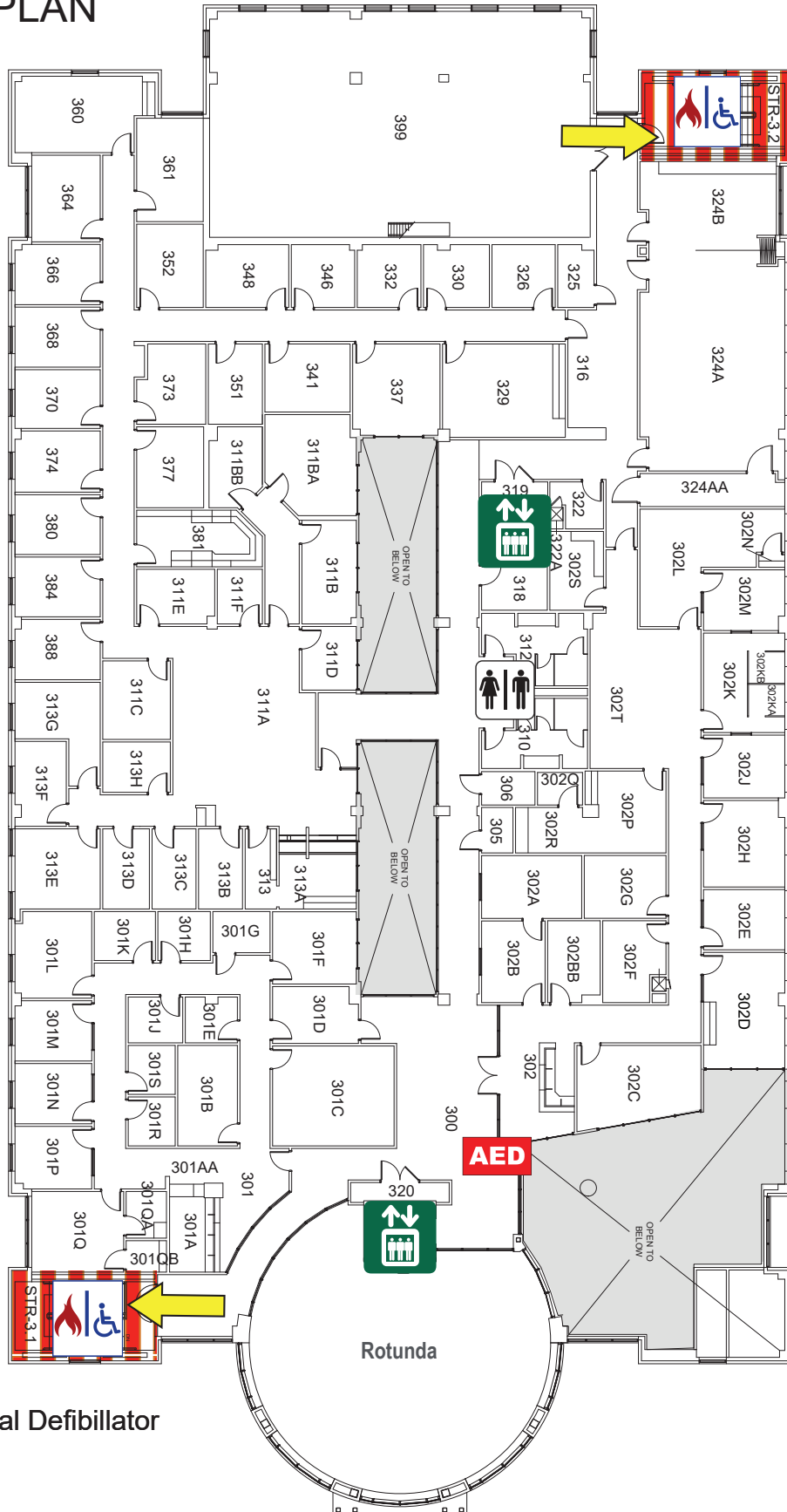


Fire Refuge Area



# CHESTNUT HALL

## THIRD FLOOR PLAN



### LEGEND



Exit



**AED** Automated External Defibrillator



Elevator  
Do NOT use an elevator in a fire



Restrooms



Fire Refuge Area

