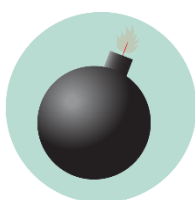


# EAGLE STUDENT SERVICES CENTER EMERGENCY GUIDELINES

**Call or text 911 in life threatening emergencies**



**FIRE**



**BOMB THREAT**



**GAS  
LEAK**



**HAZMAT**



**SEVERE  
WEATHER**



**HAZMAT**

## Evacuation

**PROMPTS: Fire alarm, direction from the UNT Police or City of Denton Fire Department, an Eagle Alert, a visibly life-threatening situation**

- Gather those around you and quickly leave through the nearest exit.
- Ask those around you with limited mobility if they need help and provide assistance, as able.
- If you take notice of someone unable to evacuate, note their location and tell first responders as soon as possible.
- Those with access and functional needs should immediately go to the nearest fire refuge area and call 911.
- Move at least 200 feet away from the building and stay off fire lanes.
- Comply with directions from first responders.

## Shelter

**PROMPTS: Eagle Alert, Outdoor Warning Sirens**

- Go indoors immediately.
- Seek shelter on the lowest level of the building, away from windows and exterior walls.
- For tornadoes: Encourage clients to shield their head and neck with arms and putting material such as furniture and blankets around themselves.
- If the event is HAZMAT related, completely turn off or seal off all external air sources including windows, doors, and air vents.
- Stay in shelter until an Eagle Alert is sent telling you it's safe to leave.

## Medical Emergency

- Call 911 (or have someone call 911 for you).
- Send others to get an AED and to meet first responders at the door.
- Ask the individual if you have their permission to assist them.
  - If **YES**, provide first aid to the extent that you feel able.
  - If **NO**, move away from the individual and wait for first responders.
  - If **unconscious**, you have implied consent to provide assistance, as long as you are not negligent.
- Assist paramedics as needed when they arrive.
- Gather info and report the incident to Risk Management Services.

## Run. Hide. Fight.

**PROMPTS: Eagle Alert; successive, loud shot noises; groups of individuals running and screaming**

- **RUN** and escape the active threat if possible.
- **HIDE** from the active threat if escape is not possible.
- **FIGHT** the attacker as a last resort and commit to your actions.



**MEDICAL  
EMERGENCY**



**ACTIVE  
THREAT**

# CAMPUS EMERGENCY CONTACTS

<p><b>Any life-threatening emergency</b> Active threat Acts or threats of violence Bomb threat Fire Hostage situation Life-threatening hazardous materials release Medical emergencies Natural gas leak Suicidal person Violent civil disturbance or demonstration Violent/threatening/hostile individual</p>	<p><b><i>Call or text 911 in life-threatening emergencies</i></b> <b>911</b></p>
<p><b>Any non-emergency concerns</b> Civil disturbance or demonstration Disruptive person Elevator failure Suspicious person</p>	<p><b><i>UNT Police</i></b> <b>940-565-3000</b></p>
<p><b>Maintenance-related issues</b> Power outage Water leak or flooding Property damage</p>	<p><b><i>UNT Facilities</i></b> <b>940-565-2700</b></p>
<p>Minor hazardous materials release</p>	<p><b><i>UNT Risk Management</i></b> <b>940-565-2109</b></p>

***If you are unsure if a situation is or is not an emergency, always call 911.***

# EAGLE STUDENT SERVICES CENTER EMERGENCY LOCATIONS AND SUPPLIES



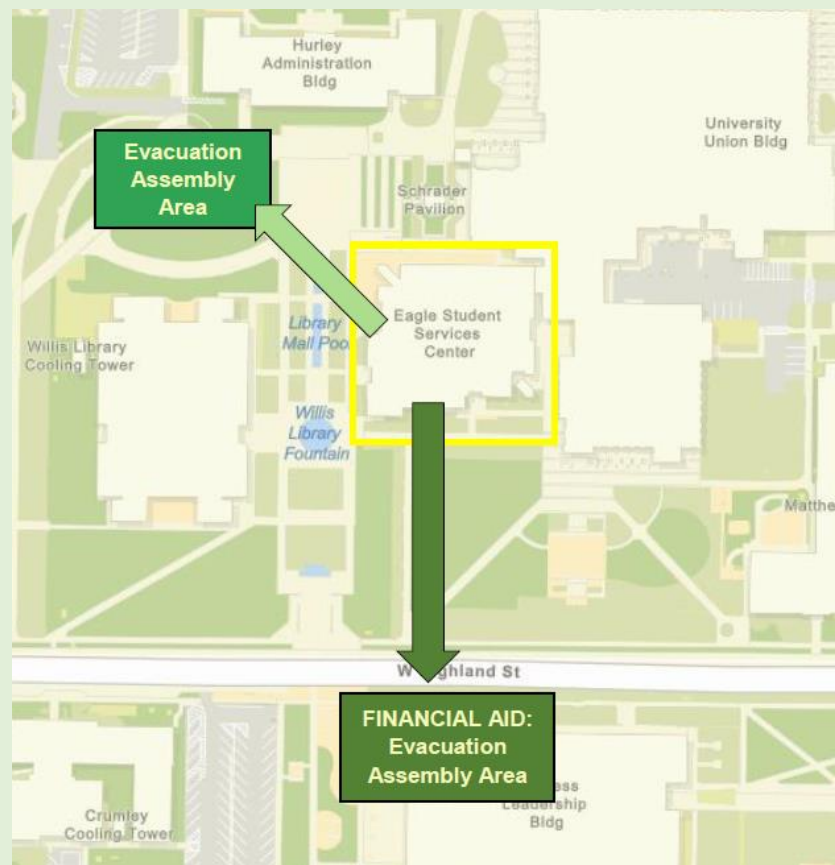
## Shelter Areas

- *1<sup>st</sup> floor:* Southwest corner of the first floor (Registrar's Office work Room)
- *2<sup>nd</sup> and 3<sup>rd</sup> floors:* Classroom 225

## Evacuation Assembly Area

### Evacuation Assembly Area

- **Financial Aid:** Across the street from the ESSC/ Union, in front of the Business Leadership Building
- **All other building occupants:** The grassy area northwest of the ESSC and north of Willis Library, unless directed to go elsewhere by first responders or an Eagle Alert



### Medical Emergency Related Equipment

- **First Aid Kits:** First aid kits in the ESSC are located on
  - The 1<sup>st</sup> floor, Room 147
  - The 2<sup>nd</sup> floor, Room 209
- **AEDs:**
  - **1<sup>st</sup> floor:** Near the elevator, across from 141
  - **2<sup>nd</sup> floor:** Near the elevator on the east side of the building by the stairs
  - **3<sup>rd</sup> floor:** Near the elevator on the east side of the building, by space 300

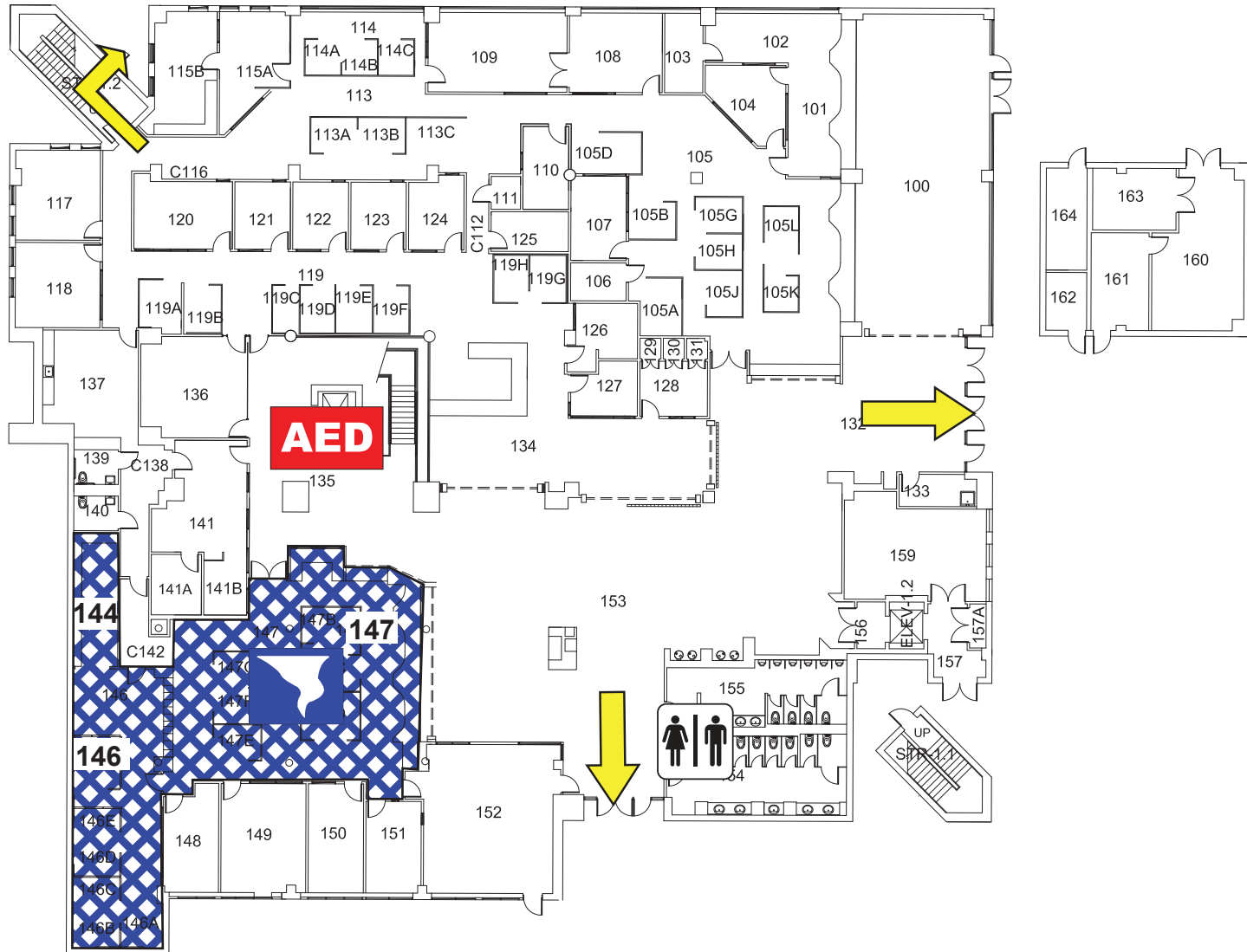


***Fire Refuge Areas:*** A temporary haven from the effects of a fire or other emergency that would normally require evacuation.

- ***Stairwells 1.1 and 1.2,*** located in the northwest and southeast corners of the building

# EAGLE STUDENT SERVICES CENTER

## FIRST FLOOR PLAN



### LEGEND



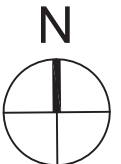
Shelter Area



Exit

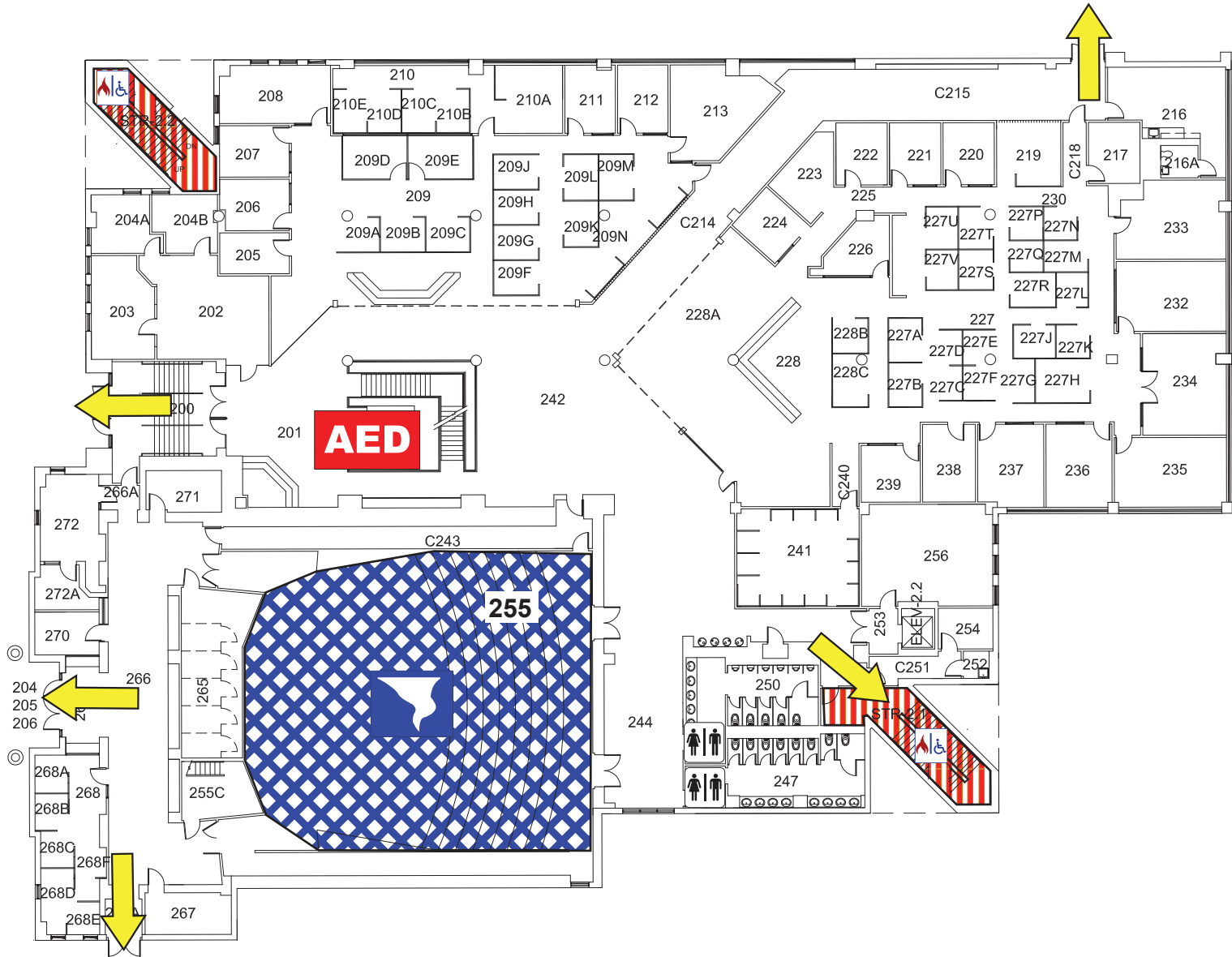


Automated External Defibrillator



# EAGLE STUDENT SERVICES CENTER

## SECOND FLOOR PLAN



### LEGEND



Shelter Area



Exit

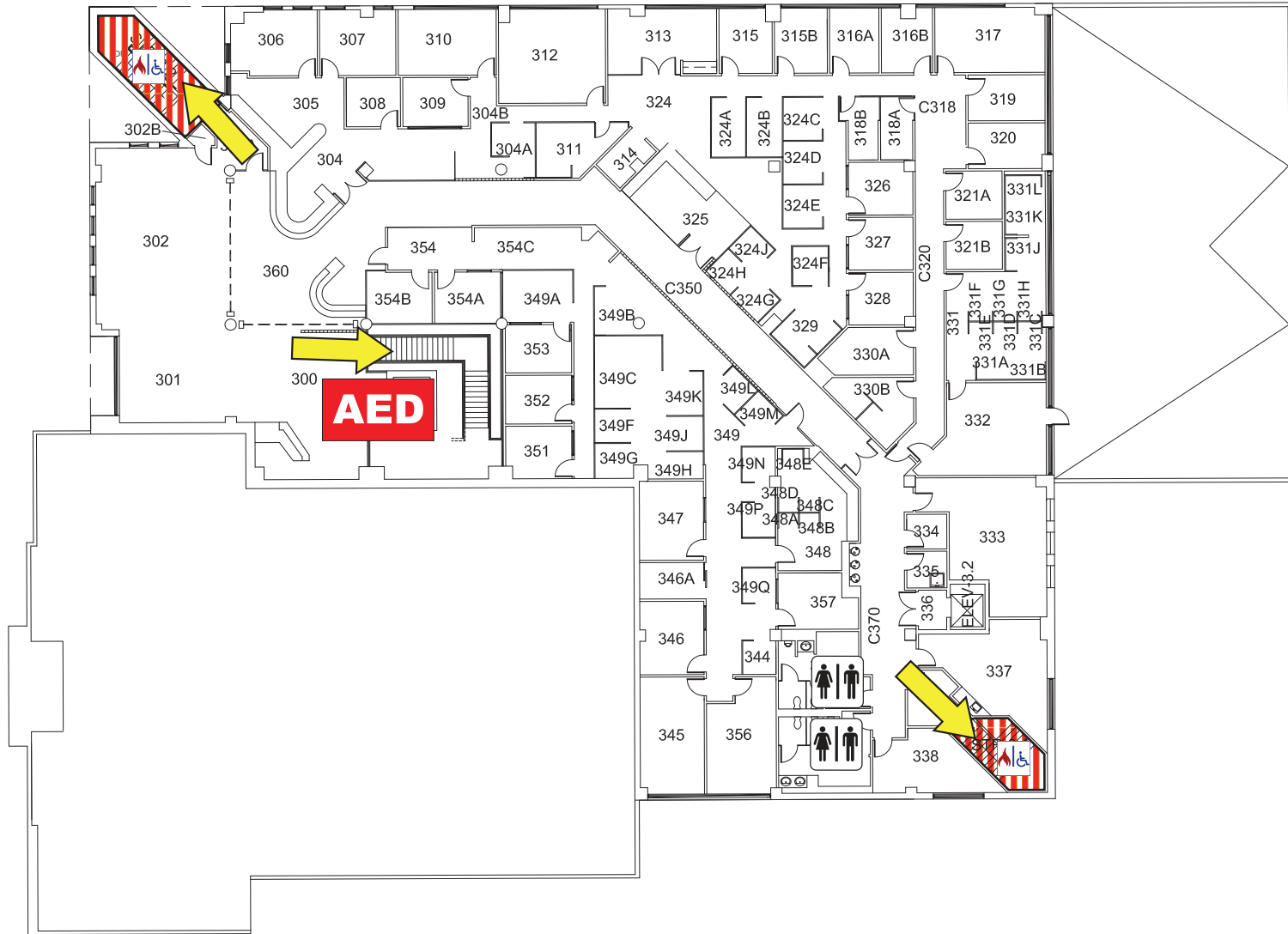
 Automated External Defibrillator

 Fire Refuge Area



# EAGLE STUDENT SERVICES CENTER

## THIRD FLOOR PLAN



### LEGEND



Exit



Automated External Defibrillator



Fire Refuge Area