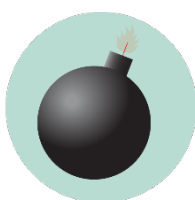


FRISCO LANDING EMERGENCY GUIDELINES

Call or text 911 in life threatening emergencies



FIRE



BOMB THREAT



**GAS
LEAK**



HAZMAT



**SEVERE
WEATHER**



HAZMAT

Evacuation

PROMPTS: Fire alarm, direction from the UNT Police or City of Frisco Fire Department, an Eagle Alert, a visibly life-threatening situation

- Gather those around you and quickly leave through the nearest exit.
- Ask those around you with limited mobility if they need help and provide assistance, as able.
- If you take notice of someone unable to evacuate, note their location and tell first responders as soon as possible.
- Those with access and functional needs should immediately go to the nearest fire refuge area and call 911.
- Move at least 200 feet away from the building and stay off fire lanes.
- Comply with directions from first responders.

Shelter

PROMPTS: Eagle Alert, Outdoor Warning Sirens

- Go indoors immediately.
- Seek shelter on the lowest level of the building, away from windows and exterior walls.
- For tornadoes: Encourage others to shield their head and neck with arms and putting material such as furniture and blankets around themselves.
- If the event is HAZMAT related, completely turn off or seal off all external air sources including windows, doors, and air vents.
- Stay in shelter until an Eagle Alert is sent telling you it's safe to leave.

Respond to a Medical Emergency

- Call 911 (or have someone call 911 for you).
- Send others to get an AED and to meet first responders at the door.
- Ask the individual if you have their permission to assist them.
 - If **YES**, provide first aid to the extent that you feel able .
 - If **NO**, move away from the individual and wait for first responders.
 - If **unconscious**, you have implied consent to provide assistance, as long as you are not negligent.
- Assist paramedics as needed when they arrive.
- Gather info and report the incident to Risk Management Services.



**MEDICAL
EMERGENCY**



**ACTIVE
THREAT**

Run. Hide. Fight. (Active Threat)

PROMPTS: Eagle Alert; successive, loud shot noises; groups of individuals running and screaming

- **RUN** and escape the active threat if possible.
- **HIDE** from the active threat if escape is not possible.
- **FIGHT** the attacker as a last resort and commit to your actions.

CAMPUS EMERGENCY CONTACTS

<p>Any life-threatening emergency Active threat Acts or threats of violence Bomb threat Fire Hostage situation Life-threatening hazardous materials release Medical emergencies Natural gas leak Suicidal person Violent civil disturbance or demonstration Violent/threatening/hostile individual</p>	<p>911 <i>Call or text 911 in life-threatening emergencies</i></p>
<p>Any non-emergency concerns Civil disturbance or demonstration Disruptive person Elevator failure Suspicious person</p>	<p>UNT Police 940-565-3000</p>
<p>Maintenance-related issues Power outage Water leak or flooding Property damage</p>	<p>UNT Facilities 940-565-2700</p>
<p>Minor hazardous materials release</p>	<p>UNT Risk Management 940-565-2109</p>

If you are unsure if a situation is or is not an emergency, always call 911.

FRISCO LANDING EMERGENCY LOCATIONS AND SUPPLIES



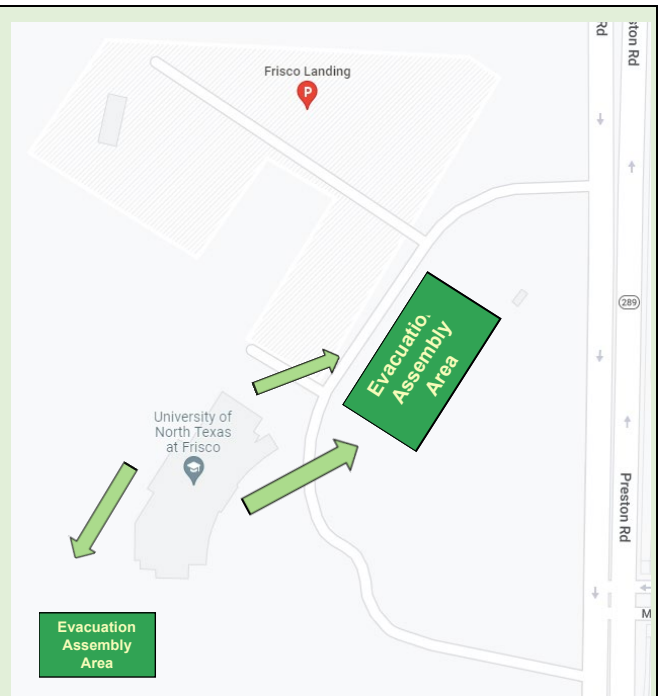
Shelter Areas

- Floor 1:
 - Restrooms
 - North Side
 - Fitness Center Showers/Restrooms
 - Wellness Rooms 170 and 177
 - Hallway adjacent to north side restrooms
 - South Side
 - South stairwell landing
 - South hallway between south stairwell landing and exterior doors.
 - Rooms 110F and 110G, and adjacent interior hallway
 - Room 114 inside Academic Advising
- Shelter areas exist in the restrooms on floors 2-through-4, however, the most secure shelters are on the first floor as outlined above and shown in the floorplan. Floor 5 does not have a suitable shelter area. Everyone on floors 2-through-5 should take stairways to first floor and report to appropriate shelter area if able to do so.

Evacuation Assembly Area

Evacuation Assembly Area

- If exiting from the northeast or north side of the building proceed east to the Main Parking Lot east of Frisco Landing
- If exiting from the northwest or south side of the building proceed south to the parking lot south of Frisco Landing



Medical Emergency Related Equipment

- **First Aid Kits:** Fitness Center (across from showers)
- **Stop the Bleed Kits:** Co-Located with AEDs in wall-boxes (see locations below)
- **AEDs:**
 - Floor 1:
 - Fitness Center (across from showers)

- North East hallway near restrooms
- Floor 2:
 - North East hallway near restrooms
- Floors 3 and 4:
 - North West hallway near elevators

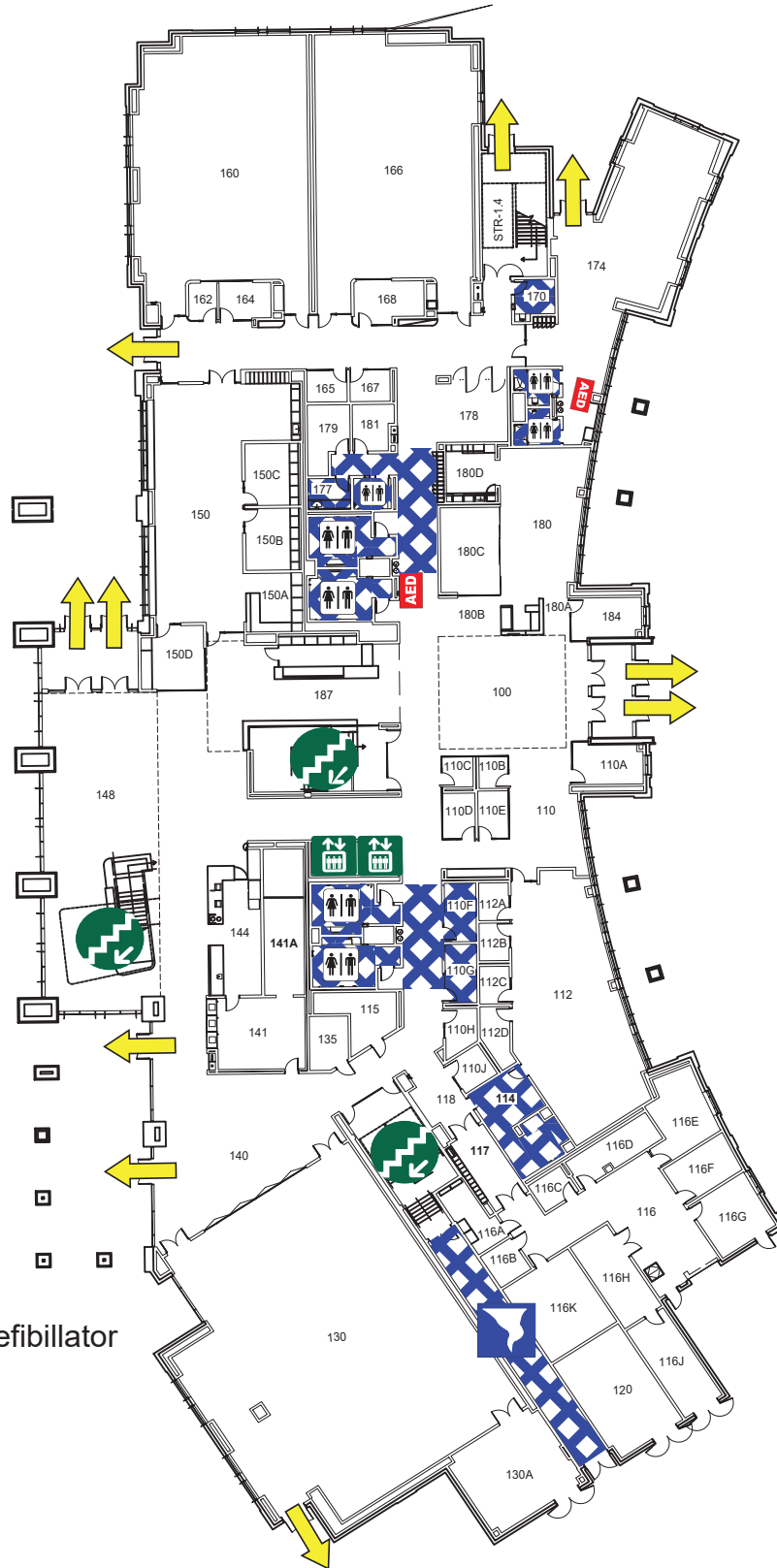


Fire Refuge Areas: A temporary haven from the effects of a fire or other emergency that would normally require evacuation.







- Fire refuge areas include the stairwell landings on floors 2-through-5 as shown in the emergency floor plan.

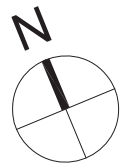
FRISCO LANDING

FIRST FLOOR PLAN



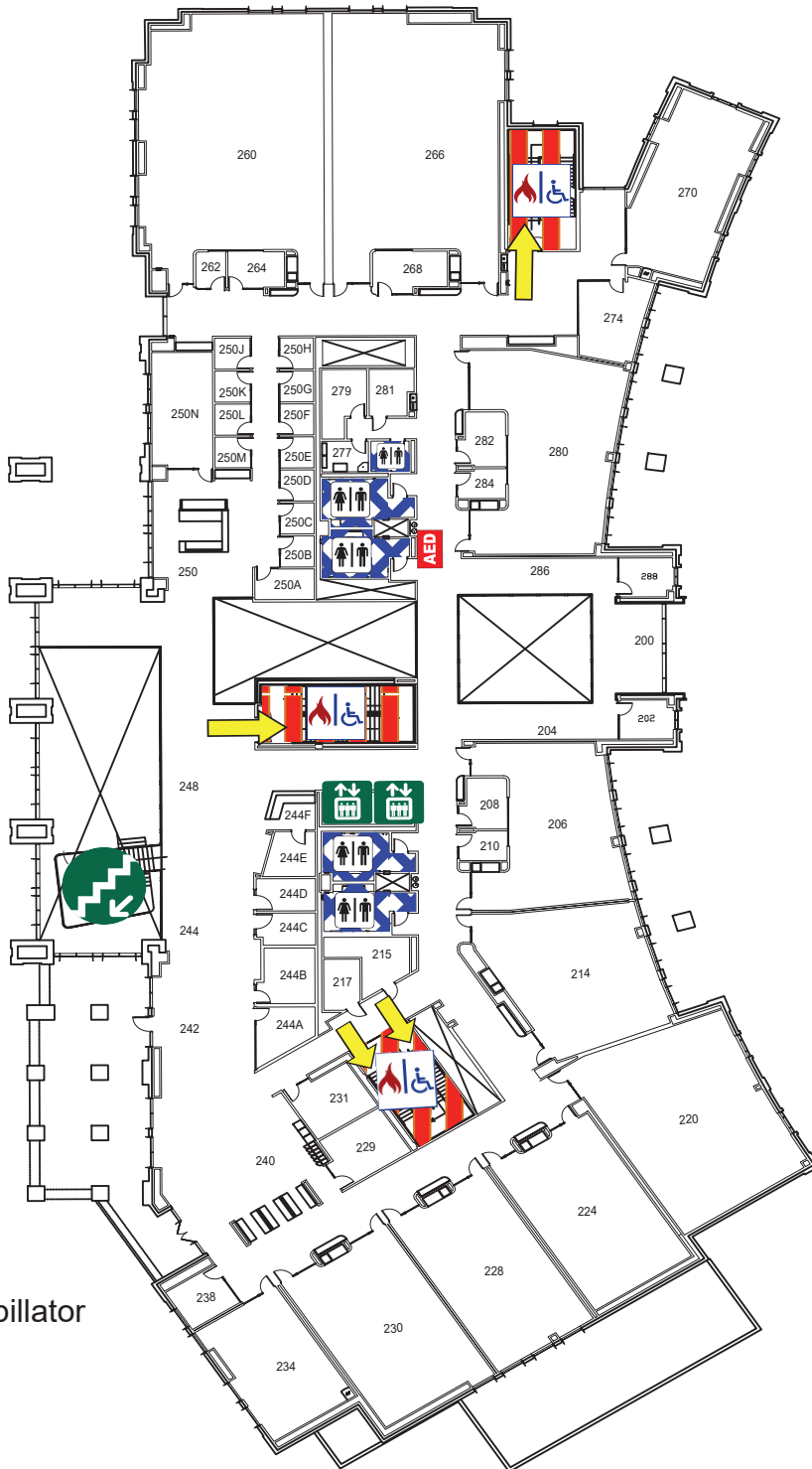
LEGEND

-  Shelter Area
-  Exit
-  Automated External Defibrillator
-  Restrooms
-  Stairs
-  Elevators



FRISCO LANDING

SECOND FLOOR




LEGEND

 Automated External Defibrillator

 Exit

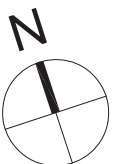
 Stairs

 Elevator
Do NOT use in case of fire

 Fire Refuge Area

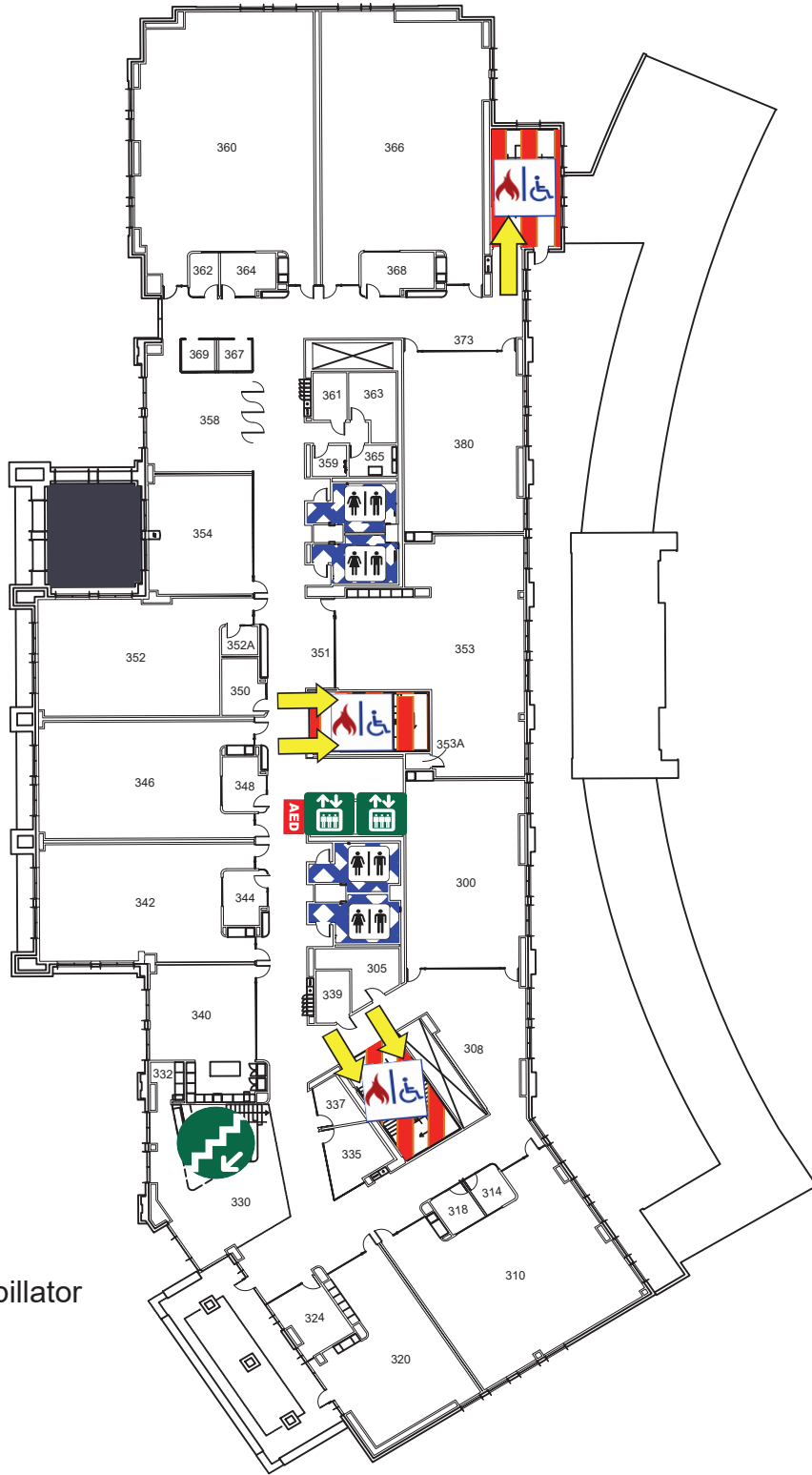
 Restrooms

 Shelter Area



FRISCO LANDING

THIRD FLOOR




LEGEND

 Automated External Defibrillator

 Exit

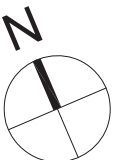
 Stairs

 Elevator
Do NOT use in case of fire

 Fire Refuge Area

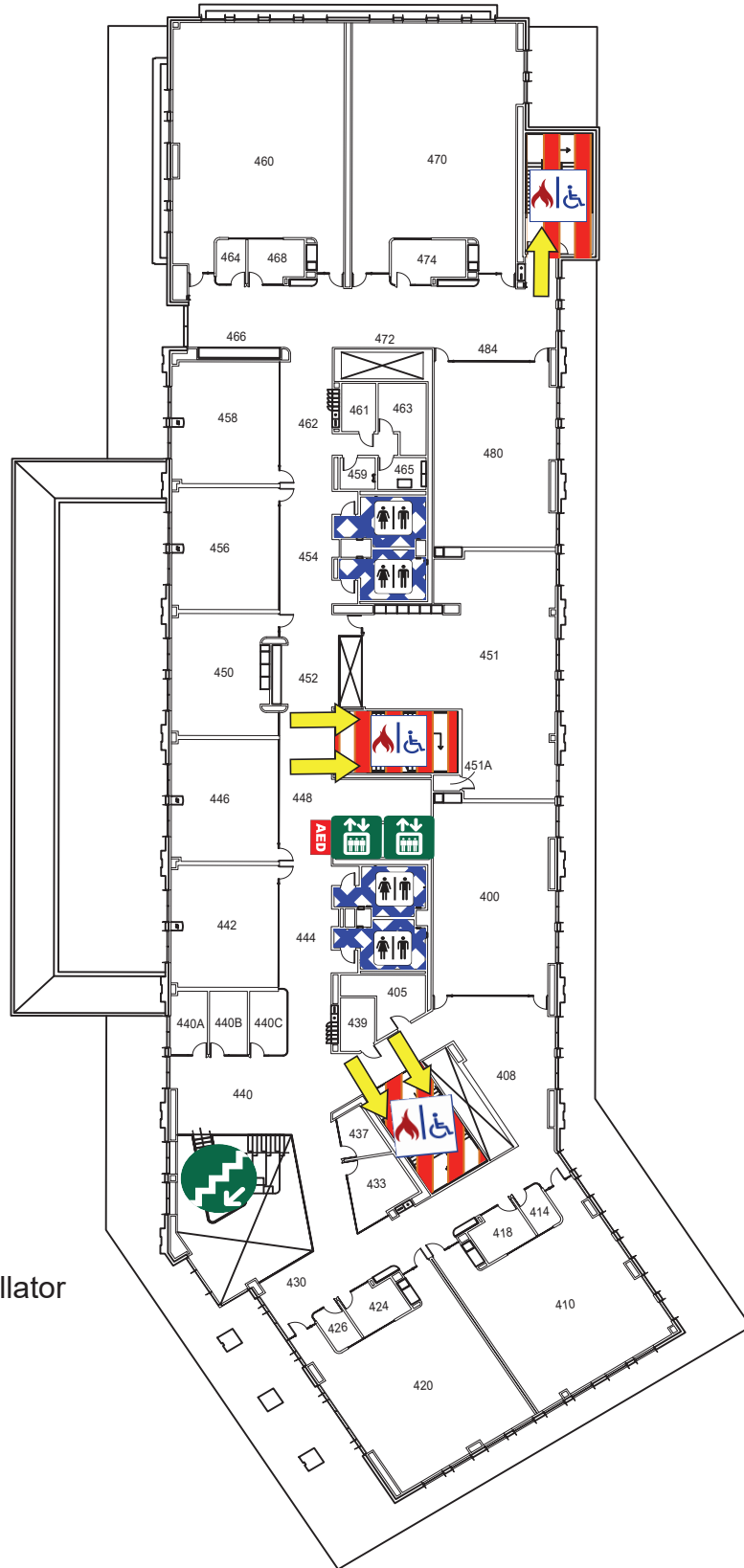
 Restrooms

 Shelter Area



FRISCO LANDING

FOURTH FLOOR



LEGEND

 Automated External Defibrillator

 Exit

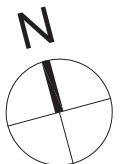
 Stairs

 Elevator
Do NOT use in case of fire

 Fire Refuge Area

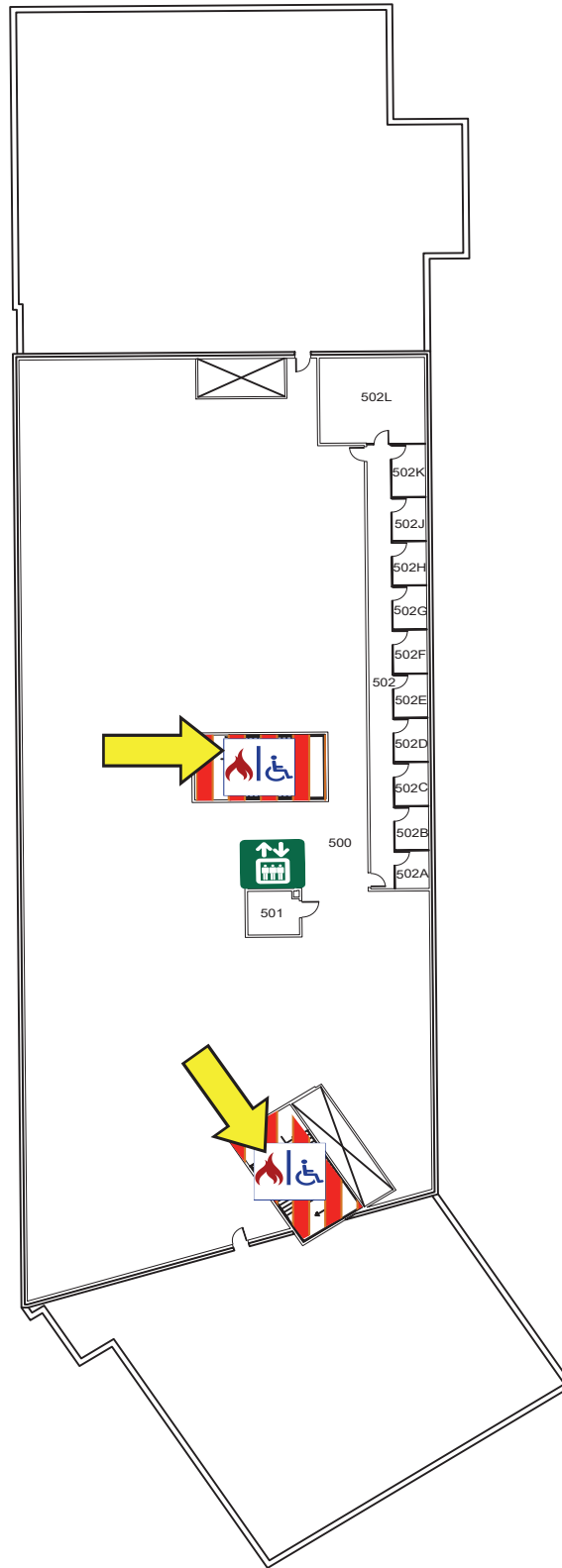
 Restrooms

 Shelter Area



FRISCO LANDING

FIFTH FLOOR



LEGEND



Exit



Elevator

Do NOT use in case of fire



Fire Refuge Area

