



Emergency Procedures

Kerr Hall

1413 Maple St., Denton, TX 76201

Shelter

You may need to take shelter for **severe weather** (most common) or a **hazardous materials release**.

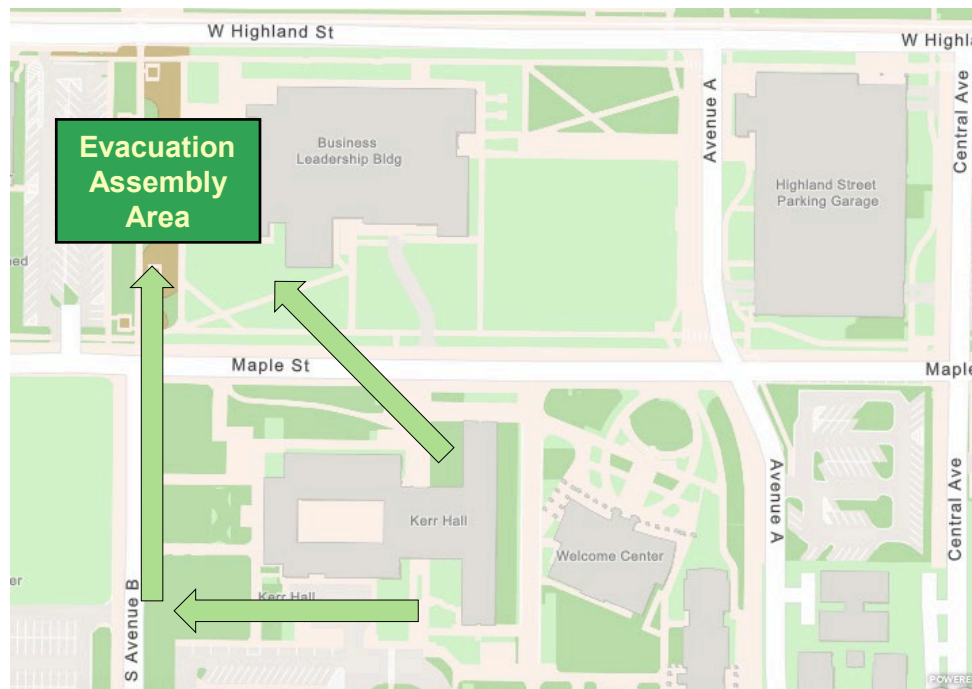
During an incident requiring individuals to take **shelter**, all building occupants should immediately move to the designated Tornado Shelter Areas in the building. If unable to safely move to the designated shelter area, seek shelter in a windowless interior room or hallway on the lowest floor of the building.

Residents and other building occupants should take shelter in the interior hallways and restrooms of the building of floors 1-3 in their respective tower, A or B. Avoid standing near windows, exterior walls, and doors made of glass.

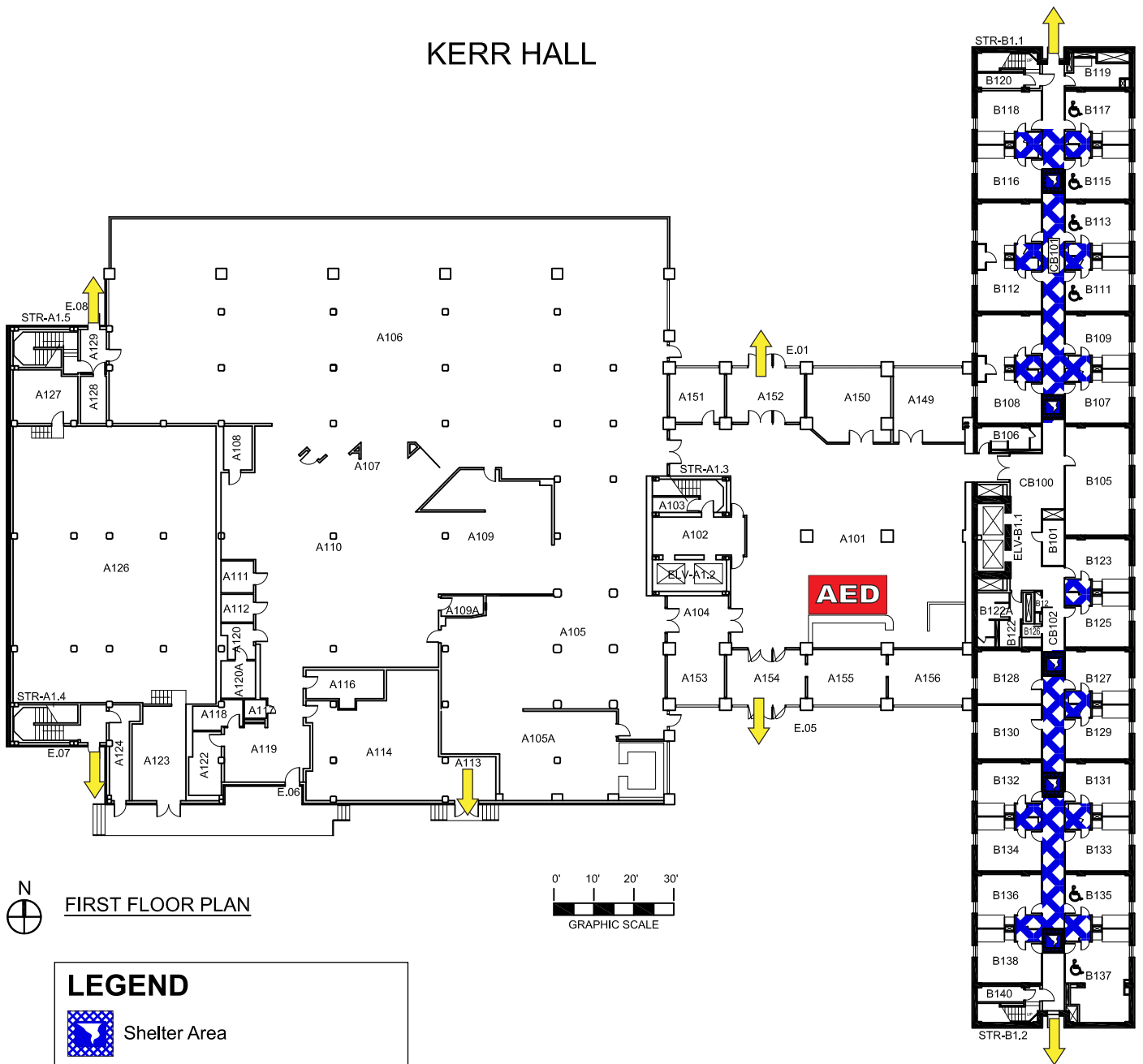
Evacuation

If you need to evacuate the building—for a fire, bomb threat, gas leak, or other event—all building occupants should immediately move to the nearest EXIT. Once outside, proceed to the designated Evacuation Assembly Area. If unable to safely move to the designated Evacuation Assembly Area, contact your RA to let them know you are safe and inform them of your whereabouts.

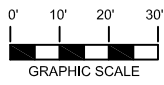
Persons with mobility impairments who are unable to safely exit the building should be moved to a designated **Area of Refuge** (also called a **Fire Refuge Area**) and await assistance from emergency responders. **Residents and other building occupants should congregate to the grassy area on the west side of the Business Leadership Building.**




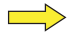

KERR HALL



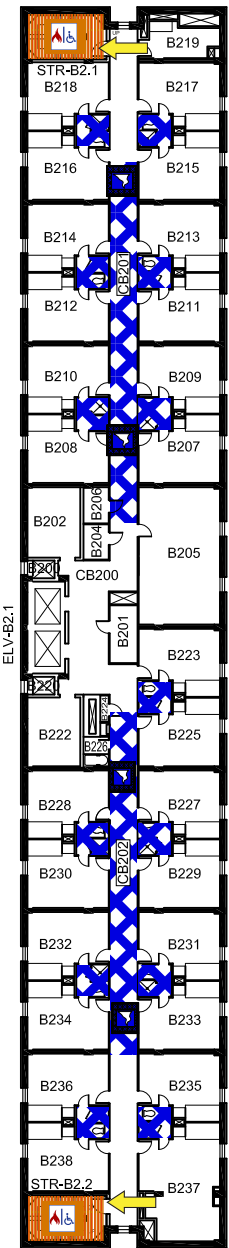
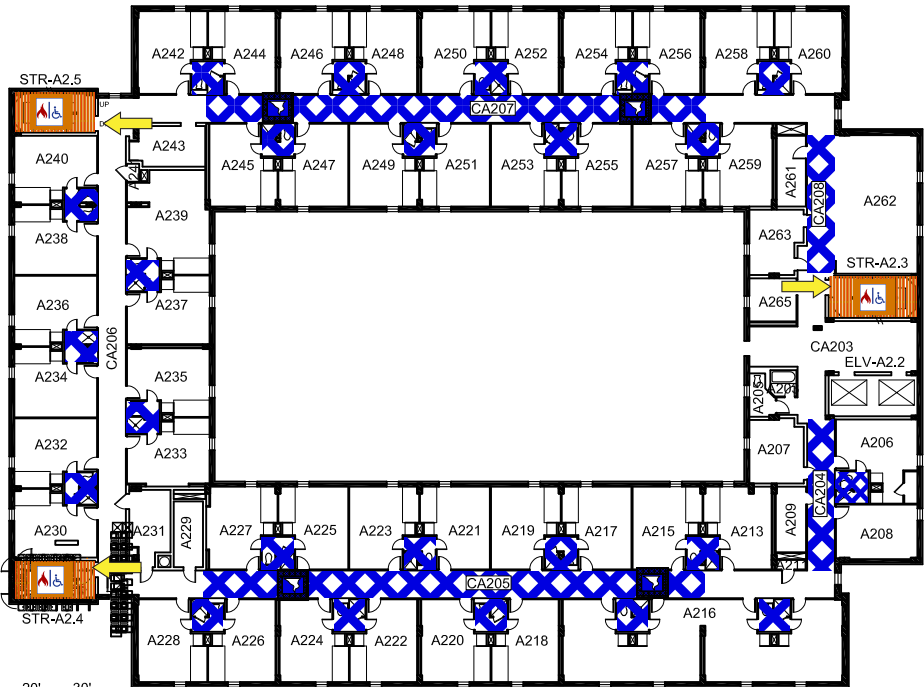
N
FIRST FLOOR PLAN



LEGEND




-  Shelter Area
-  Exit
-  Automated External Defibrillator

KERR HALL

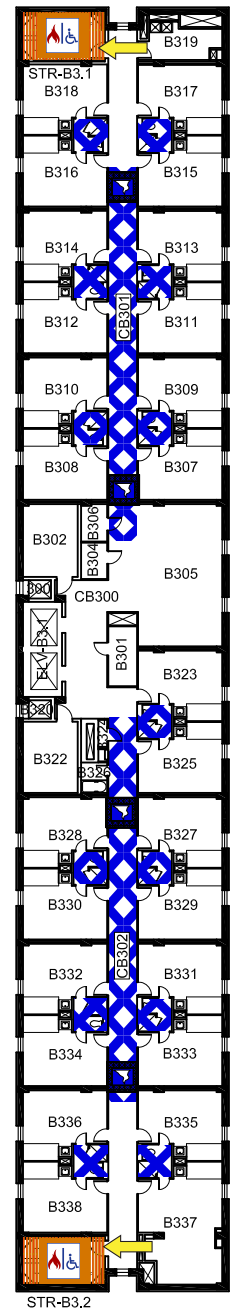
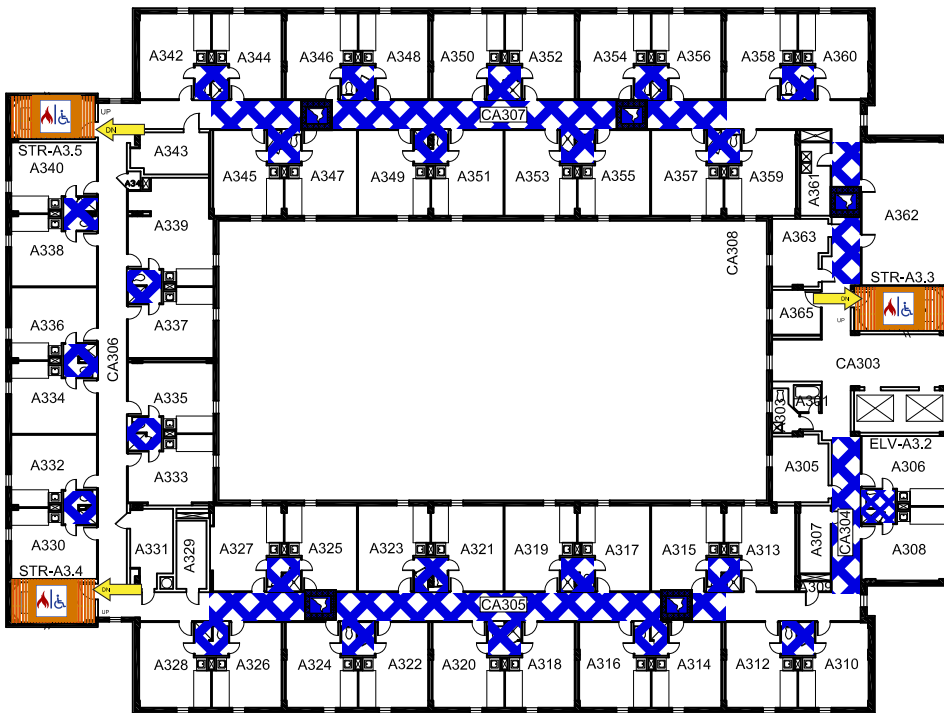


SECOND FLOOR PLAN

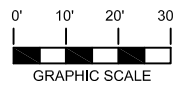
LEGEND

-  Shelter Area
-  Fire Refuge Area
-  Exit



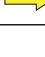
KERR HALL



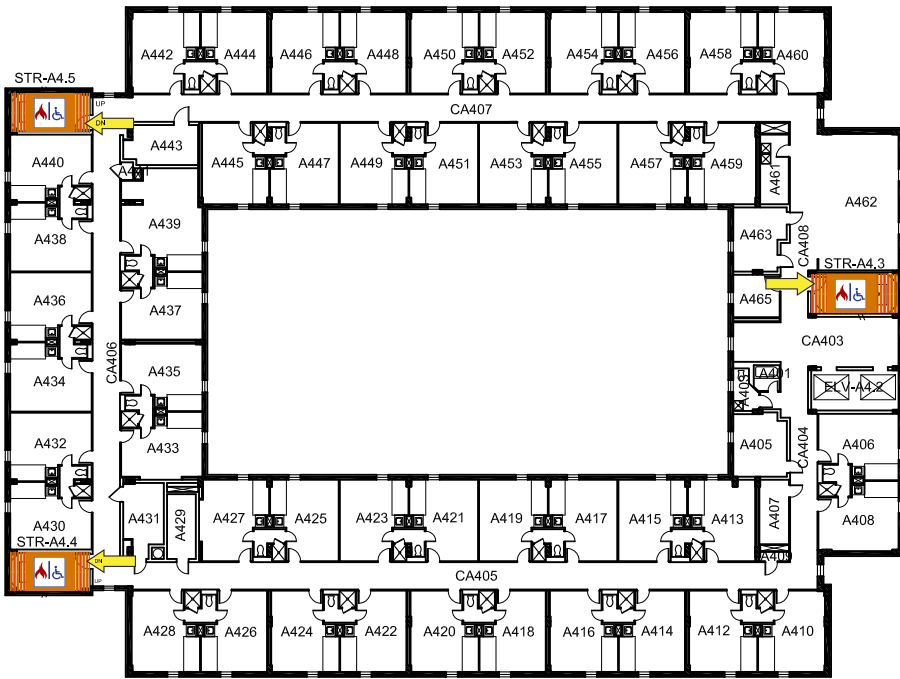
THIRD FLOOR PLAN



LEGEND



-  Shelter Area
-  Fire Refuge Area
-  Exit

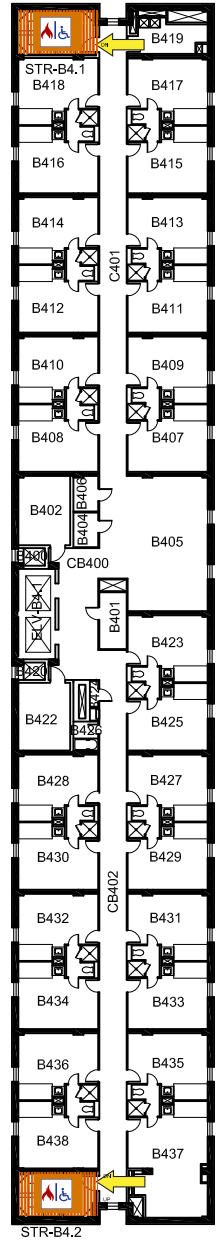
KERR HALL



N
FOURTH FLOOR PLAN

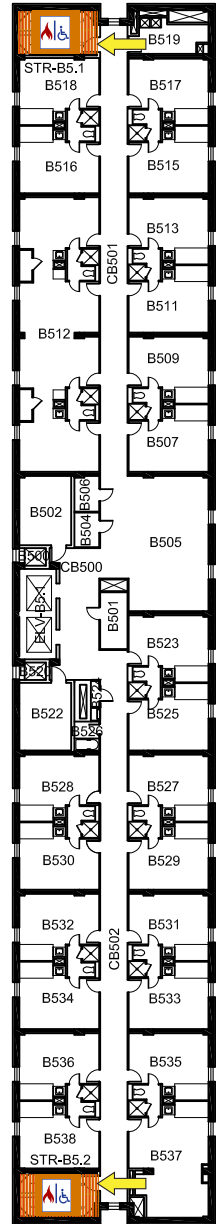
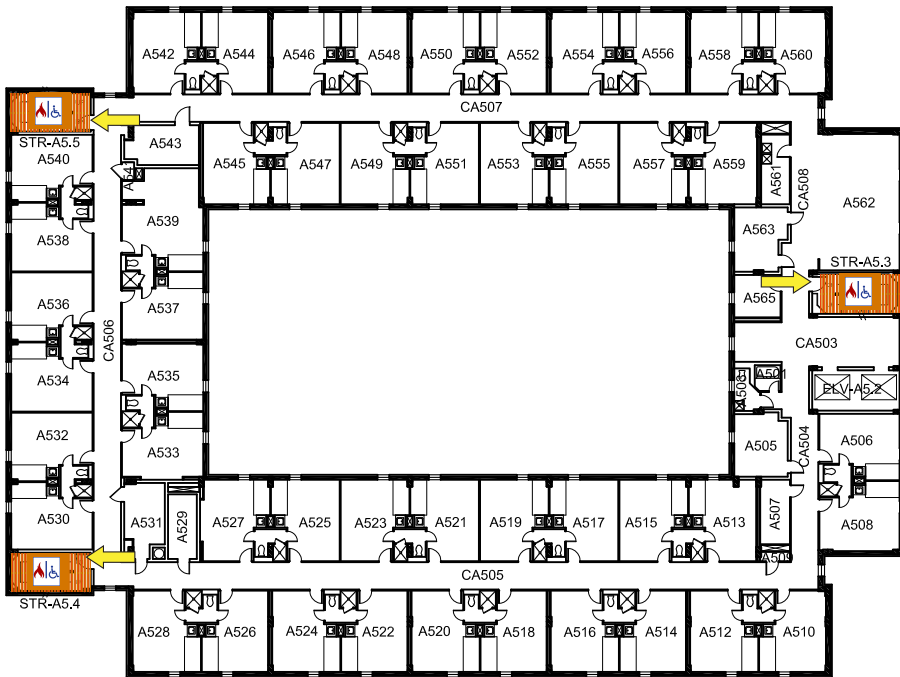
LEGEND

-  Fire Refuge Area
-  Exit

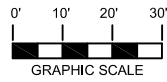


STR-B4.2



KERR HALL



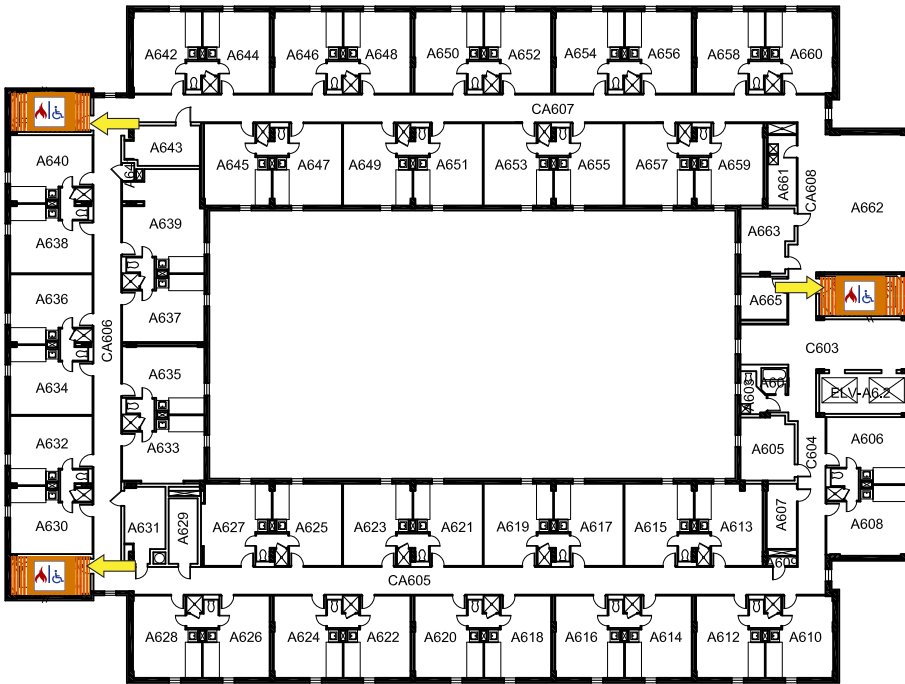
FIFTH FLOOR PLAN



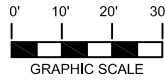
LEGEND

-  Fire Refuge Area
-  Exit



KERR HALL

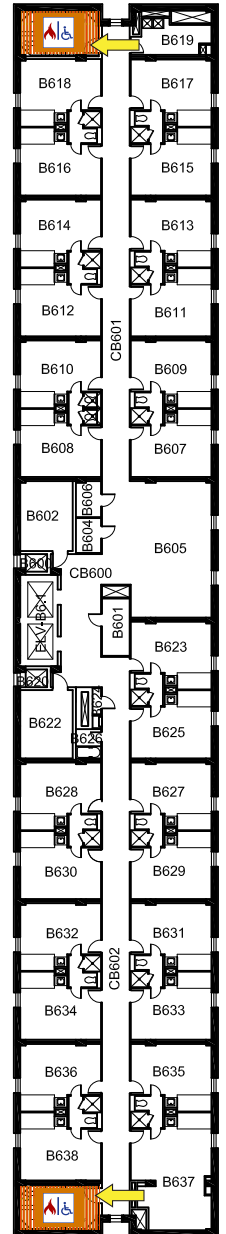


N
 SIXTH FLOOR PLAN

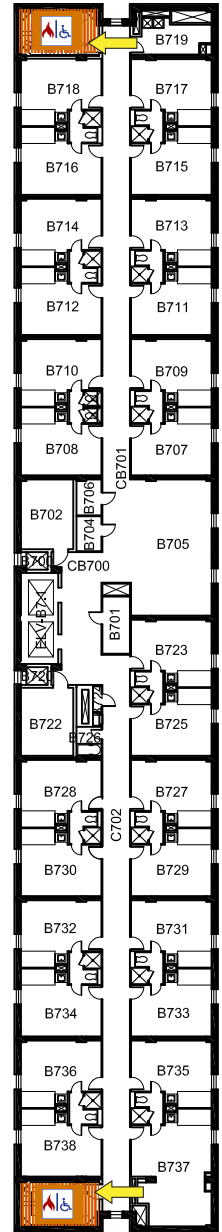
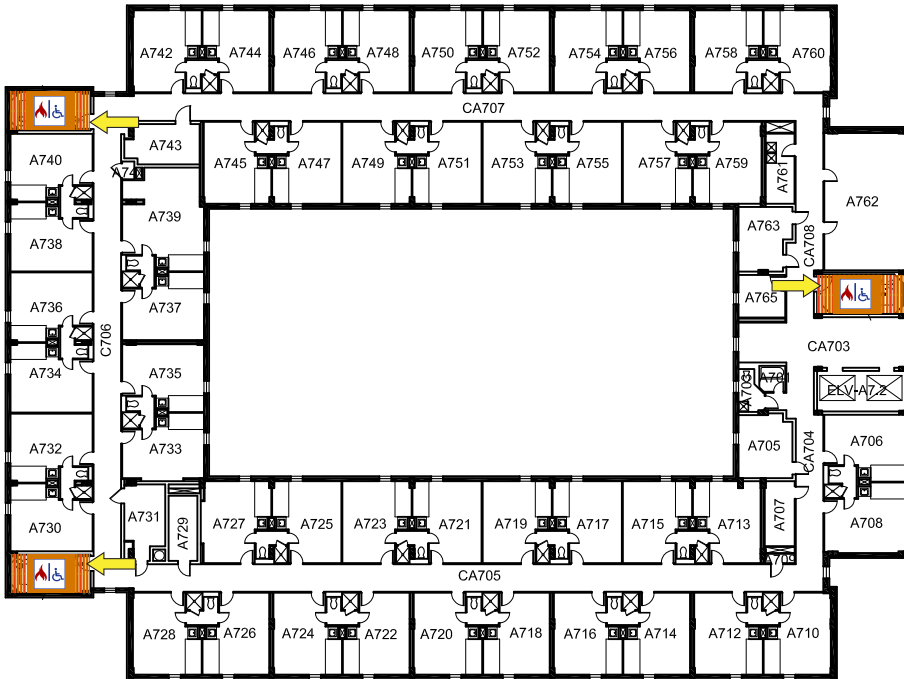


LEGEND

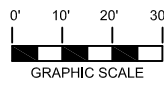
-  Fire Refuge Area
-  Exit





KERR HALL



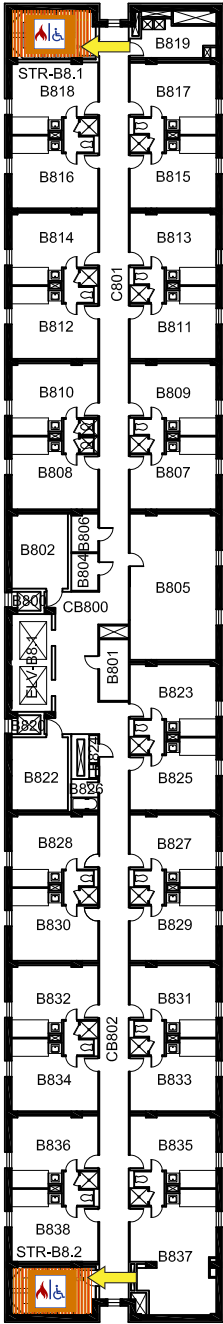
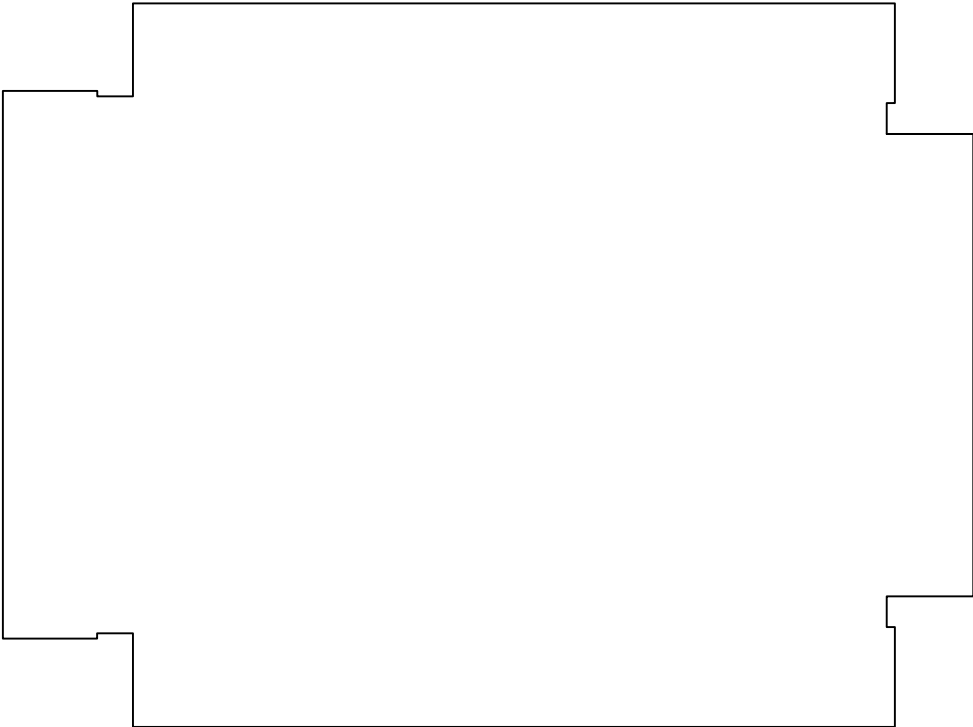
SEVENTH FLOOR PLAN



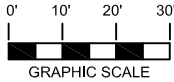
LEGEND

-  Fire Refuge Area
-  Exit



KERR HALL



EIGHTH FLOOR PLAN



LEGEND

-  Fire Refuge Area
-  Exit