



Emergency Procedures for Matthews Hall

1300 W. Highland St., Denton, TX 76201

Shelter

You may need to take shelter for **severe weather** (most common) or a **hazardous materials release**.

During an incident requiring individuals to take **shelter**, all building occupants should immediately move to the designated Tornado Shelter Areas in the building. If unable to safely move to the designated shelter area, seek shelter in a windowless interior room or hallway on the lowest floor of the building.

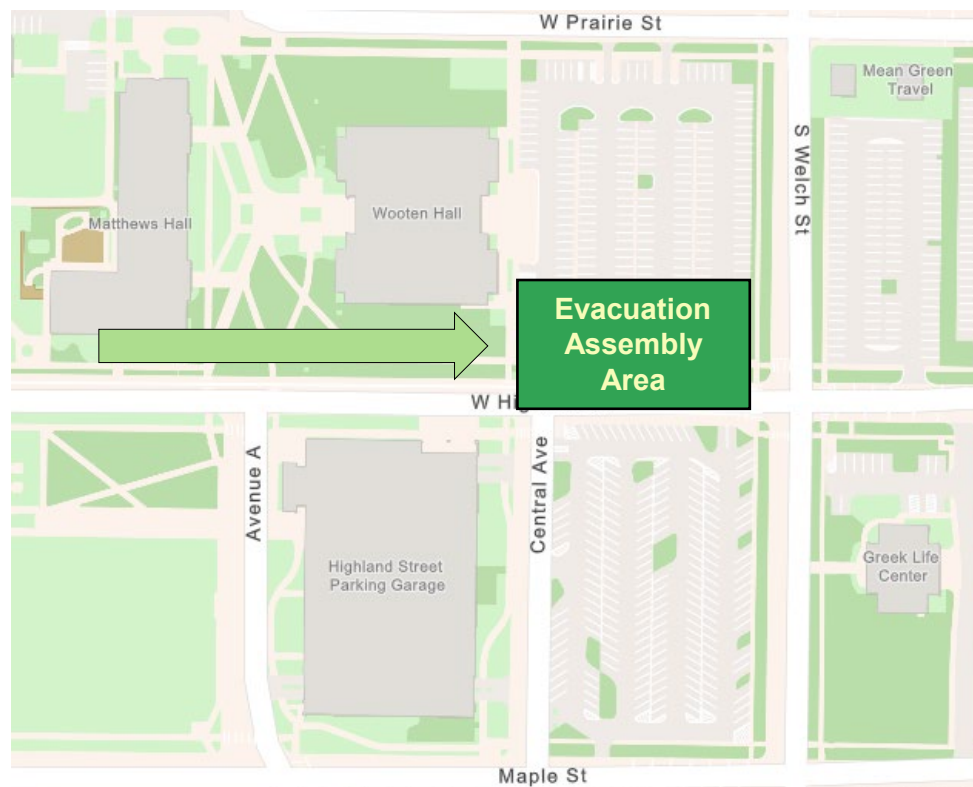
All building occupants should take shelter on the first floor in the interior hallways and restrooms, or in the interior suites of 117. Avoid standing near windows, exterior walls, and doors made of glass.

Evacuation

If you need to evacuate the building—for a fire, bomb threat, gas leak, or other event—all building occupants should immediately move to the nearest EXIT. Once outside, proceed to the designated Evacuation Assembly Area. If unable to safely move to the designated assembly area, contact one or more members of your department or unit to let them know you are safe and your whereabouts.

Persons with mobility impairments who are unable to safely exit the building should be moved to a designated **Fire Refuge Area** and await assistance from emergency responders. An Evacuation Chair, which is located on the third floor outside the stairwell on the southeast side of the building makes it possible for anyone **to assist someone** with reduced mobility to descend the stairs quickly. It is specifically designed so that an individual may transport a person with reduced mobility downstairs during an evacuation. **All building occupants should immediately evacuate the building and proceed to Parking Lot 37 east of Wooten Hall.**

For more information on what to do in a specific emergency situation, refer to the UNT Emergency Guidelines on www.emergency.unt.edu or the Mean Green Ready app. **Call 911 in an emergency!**



MATTHEWS HALL

BASEMENT FLOOR PLAN

LEGEND



Shelter Area



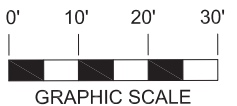
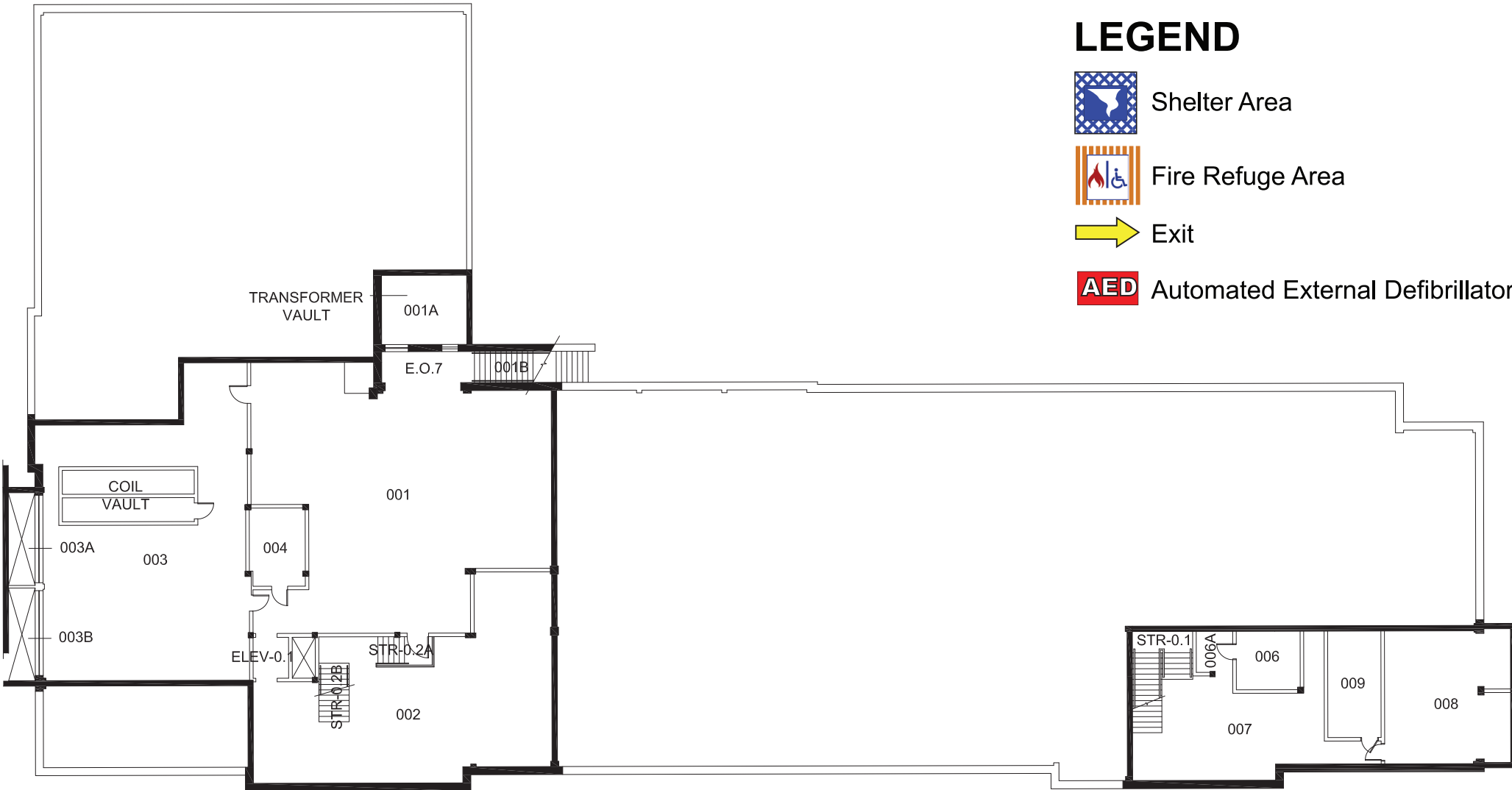
Fire Refuge Area



Exit

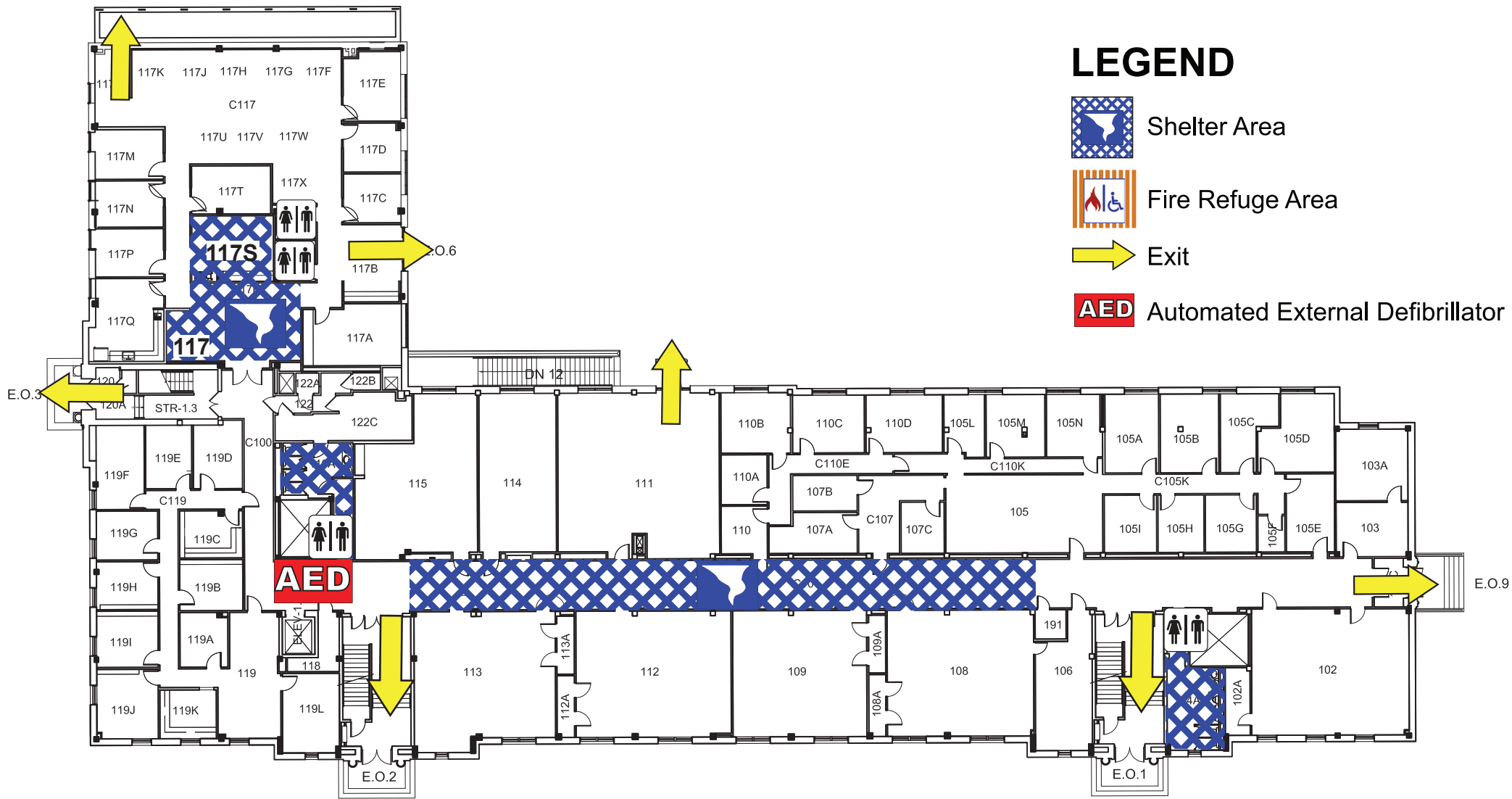


AED Automated External Defibrillator







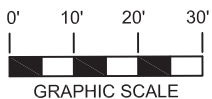
MATTHEWS HALL

FIRST FLOOR PLAN



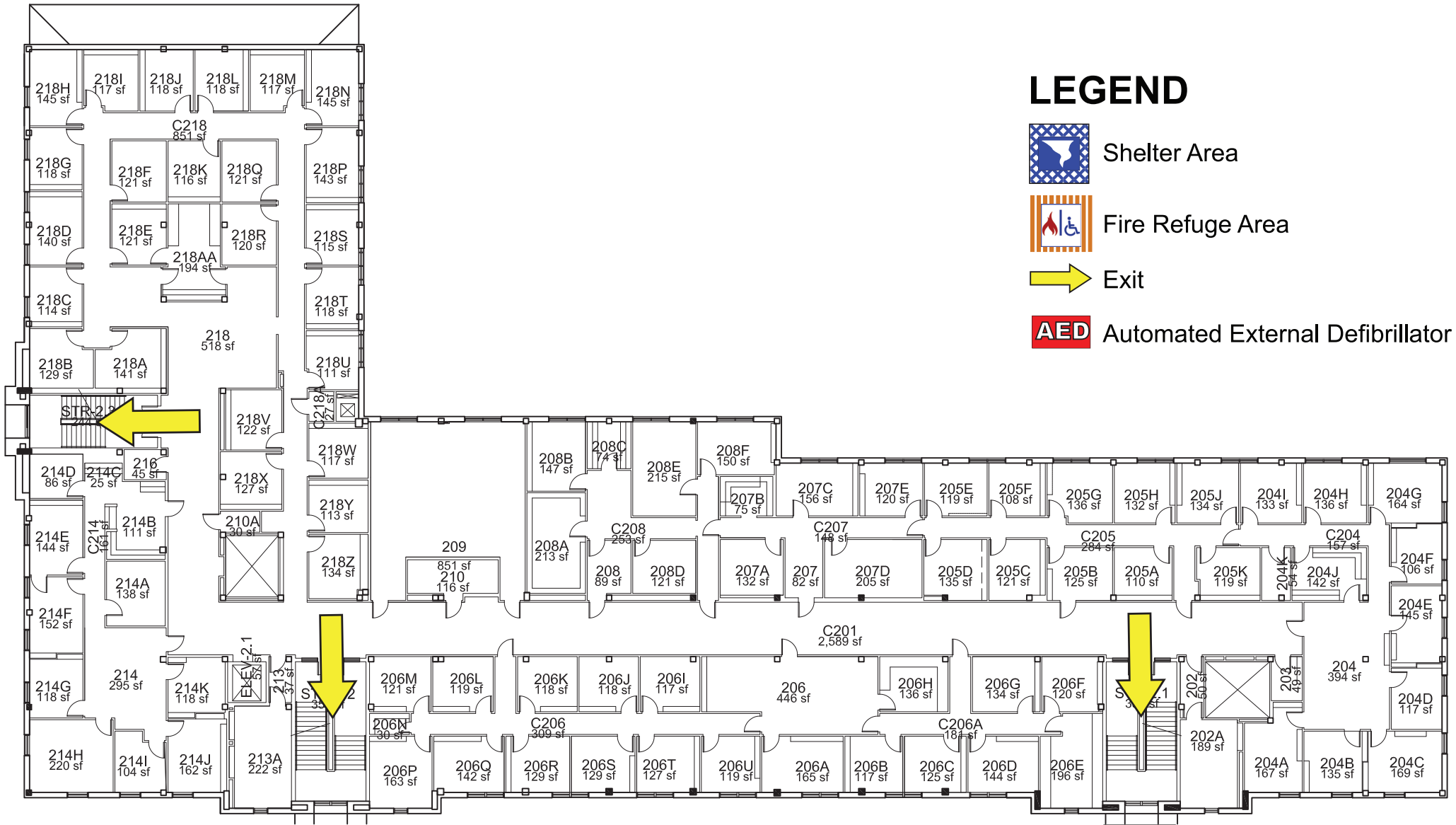
LEGEND

-  Shelter Area
-  Fire Refuge Area
-  Exit
-  Automated External Defibrillator



MATTHEWS HALL

SECOND FLOOR PLAN



LEGEND



Shelter Area



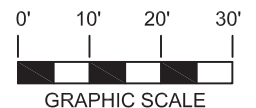
Fire Refuge Area



Exit

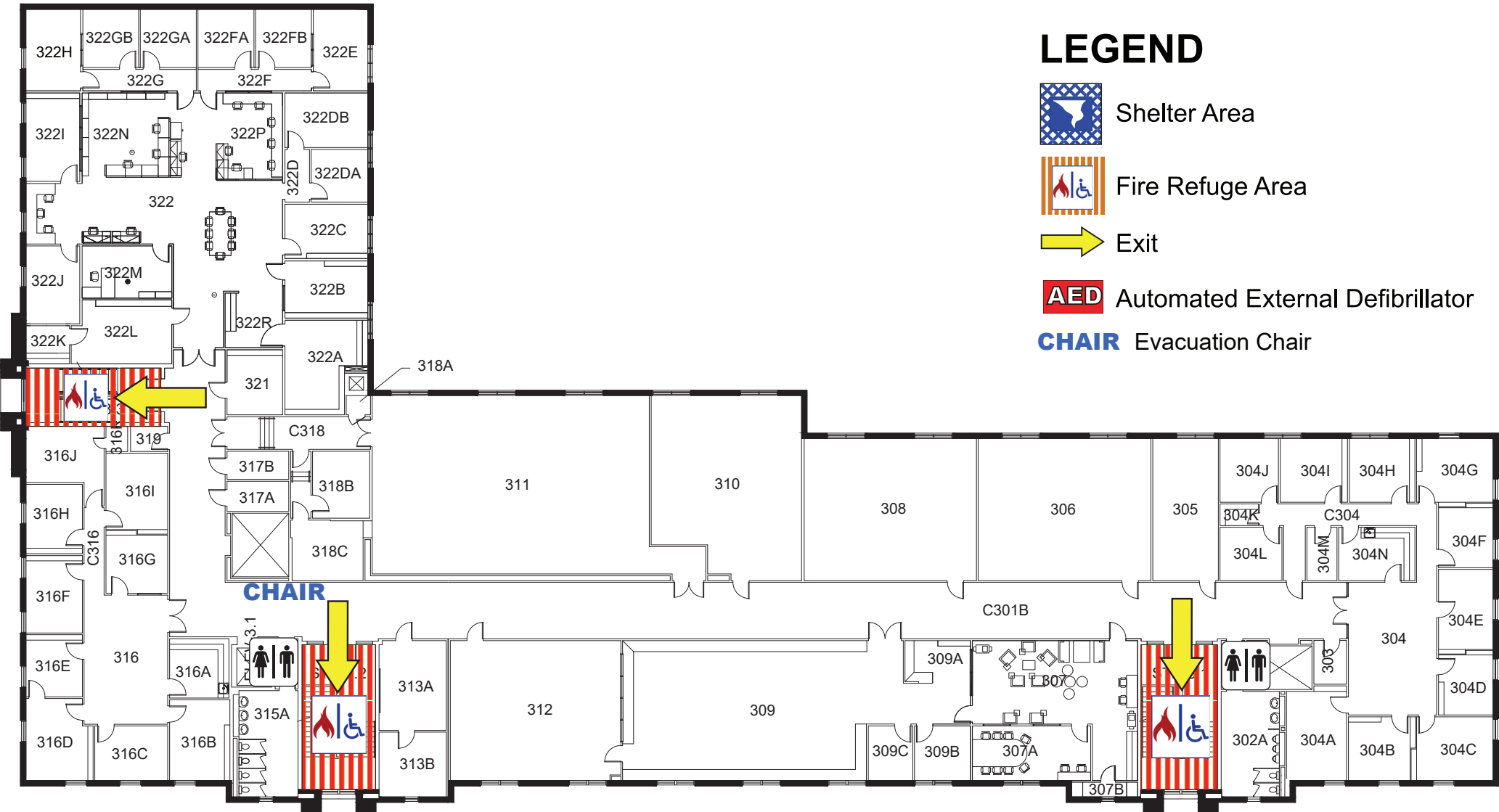


AED Automated External Defibrillator



MATTHEWS HALL

THIRD FLOOR PLAN



LEGEND



Shelter Area



Fire Refuge Area



Exit



Automated External Defibrillator



Evacuation Chair

