



# Emergency Procedures for North Texas Lofts

217 North Texas Blvd., Denton, TX 76201

## Shelter

You may need to take shelter for **severe weather** (most common) or a **hazardous materials release**.

During an incident requiring individuals to take **shelter**, all building occupants should immediately move to the designated Tornado Shelter Areas in the building. If unable to safely move to the designated shelter area, seek shelter in a windowless interior room or hallway on the lowest floor of the building.

**All building occupants should move to Legends Hall to the east of NT Lofts and take shelter in the interior halls and restrooms on the lowest floor. Avoid standing near windows, exterior walls, and doors made of glass.**

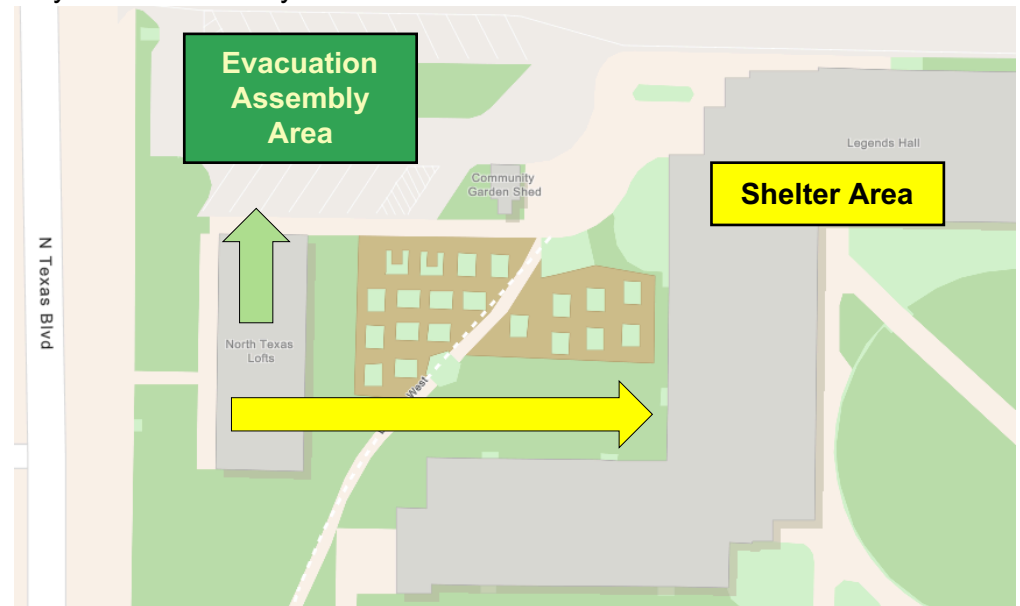
## Evacuation

If you need to evacuate the building—for a fire, bomb threat, gas leak, or other event—all building occupants should immediately move to the nearest EXIT. Once outside, proceed to the designated Evacuation Assembly Area. If unable to safely move to the designated assembly area, contact one or more members of your department or unit to let them know you are safe and your whereabouts.

Persons with mobility impairments who are unable to safely exit the building should be moved to a designated **Area of Refuge** (also called a **Fire Refuge Area**) and await assistance from emergency responders.

**All building occupants should immediately evacuate the building and proceed to Parking Lot 12 south of College Inn.**

For more information on what to do in a specific emergency situation, refer to the UNT Emergency Guidelines on [www.emergency.unt.edu](http://www.emergency.unt.edu) or the Mean Green Ready app. **Call 911 in an emergency!**



# NORTH TEXAS LOFTS


BLDG #0864

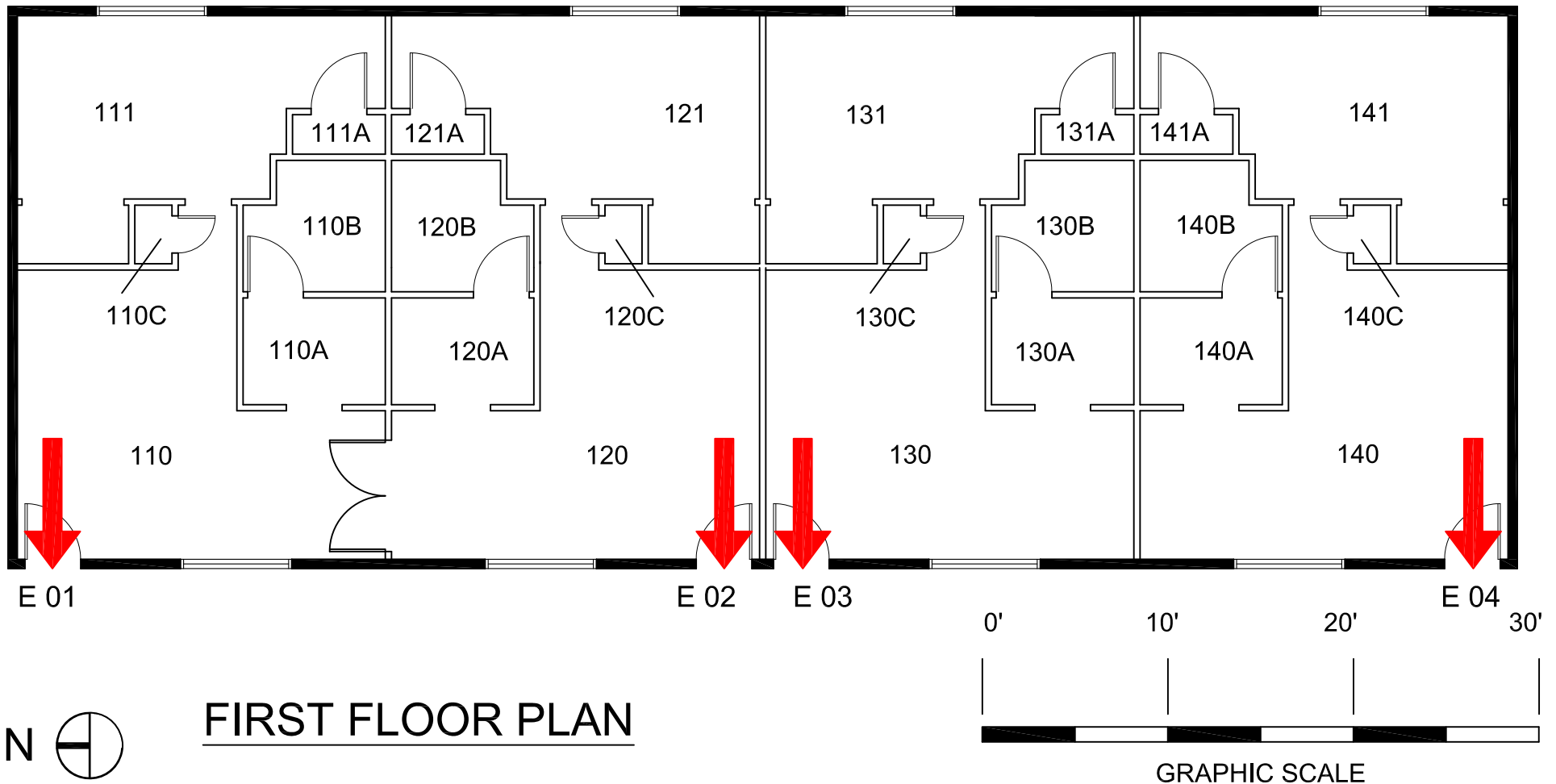
10-2016

During severe weather, all building occupants should seek shelter in Legends Hall, located east of the Lofts.

Exterior Gross Area  
2464

## Safety Legend

 Exit/Evacuation Routes  
*In case of fire, do not use elevator*



# NORTH TEXAS LOFTS


BLDG #0864

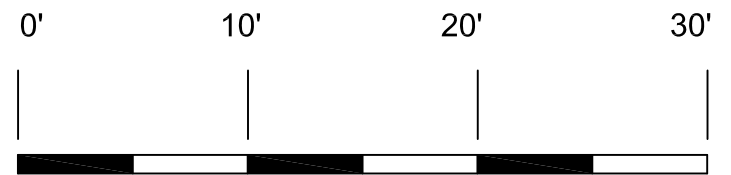
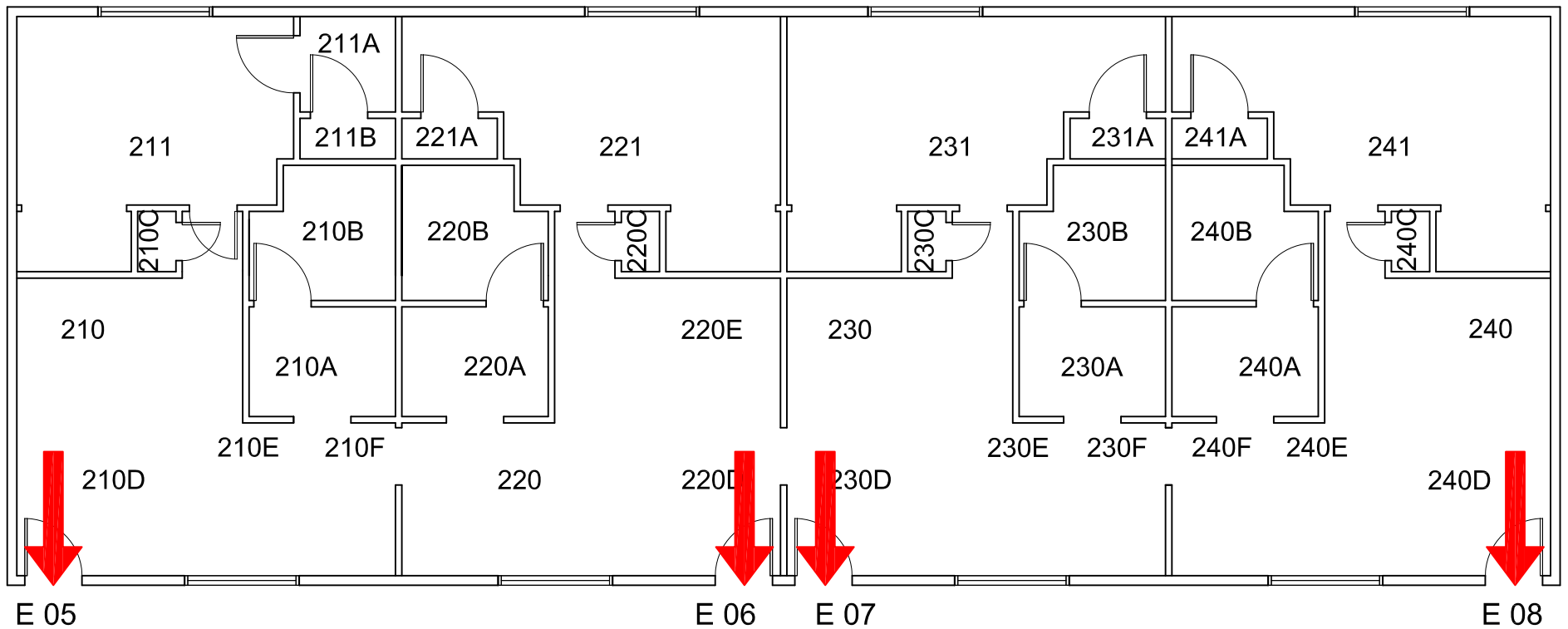
10-2016

During severe weather, all building occupants should seek shelter in Legends Hall, located east of the Lofts.

Exterior Gross Area  
2464

## Safety Legend

 Exit/Evacuation Routes  
*In case of fire, do not use elevator*



GRAPHIC SCALE



SECOND FLOOR PLAN