



# Emergency Procedures Victory Hall

1379 S. Bonnie Brae St., Denton, TX 76205

## Shelter

You may need to take shelter for **severe weather** (most common) or a **hazardous materials release**.

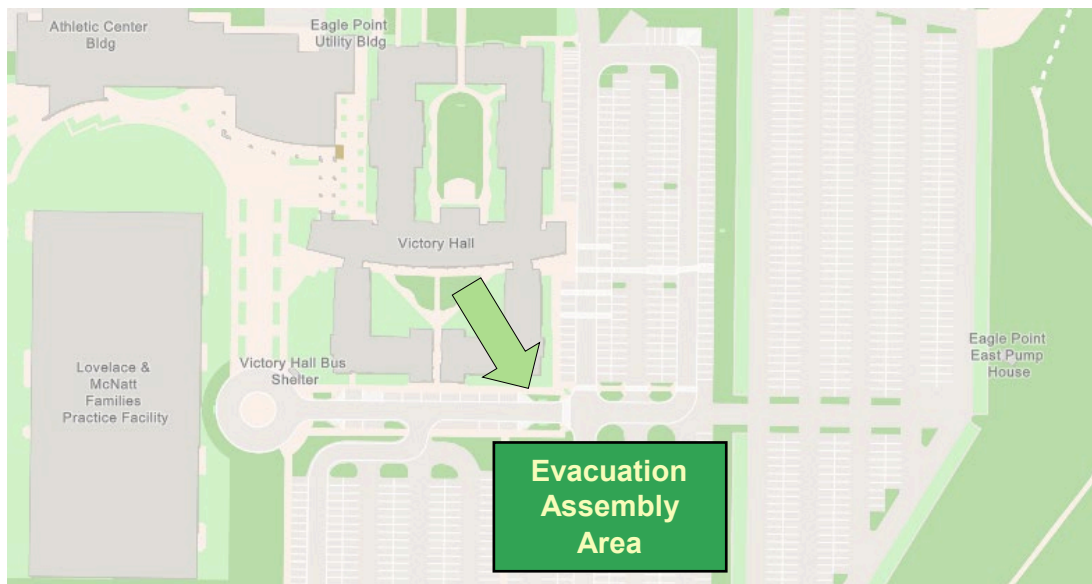
During an incident requiring individuals to take **shelter**, all building occupants should immediately move to the designated Tornado Shelter Areas in the building. If unable to safely move to the designated shelter area, seek shelter in a windowless interior room or hallway on the lowest floor of the building.

- **North Wing 1st floor residents should shelter inside their restrooms.**
- **North Wing 2nd and 3rd floor residents should shelter on the first floor interior hallways.**
- **South Wing 1st and 2nd floor residents should shelter in their restrooms.**
- **South Wing 3rd and 4th floor residents shelter on the first floor interior hallways.**
- **All other building occupants should seek shelter in the interior hallways of the closest respective wing.**

## Evacuation

If you need to evacuate the building—for a fire, bomb threat, gas leak, or other event—all building occupants should immediately move to the nearest EXIT. Once outside, proceed to the designated Evacuation Assembly Area. If unable to safely move to the designated Evacuation Assembly Area, contact your RA to let them know you are safe and inform them of your whereabouts.

Persons with mobility impairments who are unable to safely exit the building should be moved to a designated **Area of Refuge** (also called a **Fire Refuge Area**) and await assistance from emergency responders. **Residents and other building occupants should congregate southeast to Parking Lot 80.**



For more information on what to do in a specific emergency situation, refer to the UNT Emergency Guidelines on [www.emergency.unt.edu](http://www.emergency.unt.edu) or the Mean Green Ready app. **Call 911 in an emergency!**



# VICTORY HALL

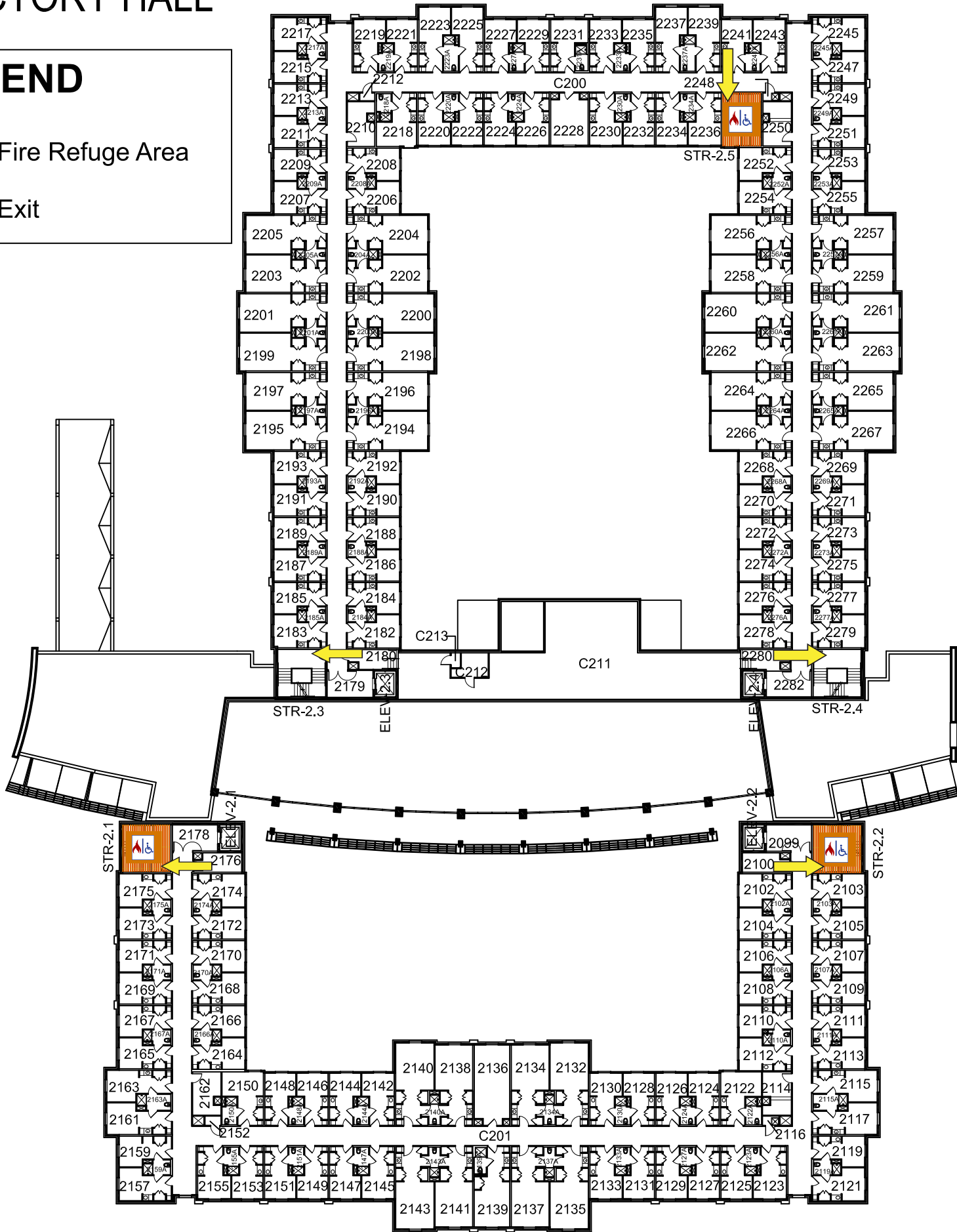
## LEGEND



Fire Refuge Area



Exit



SECOND FLOOR PLAN



# VICTORY HALL

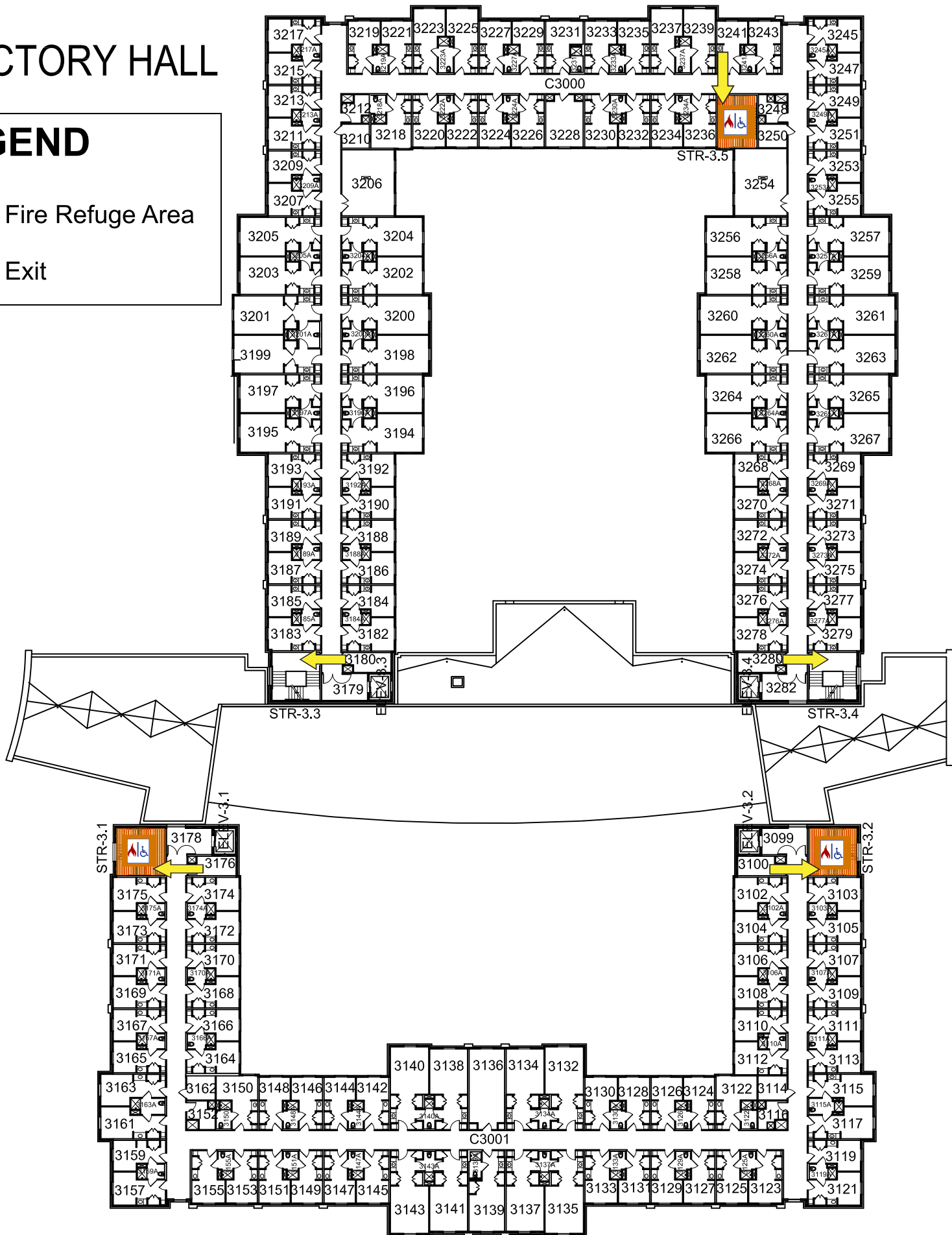
## LEGEND



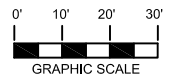
Fire Refuge Area

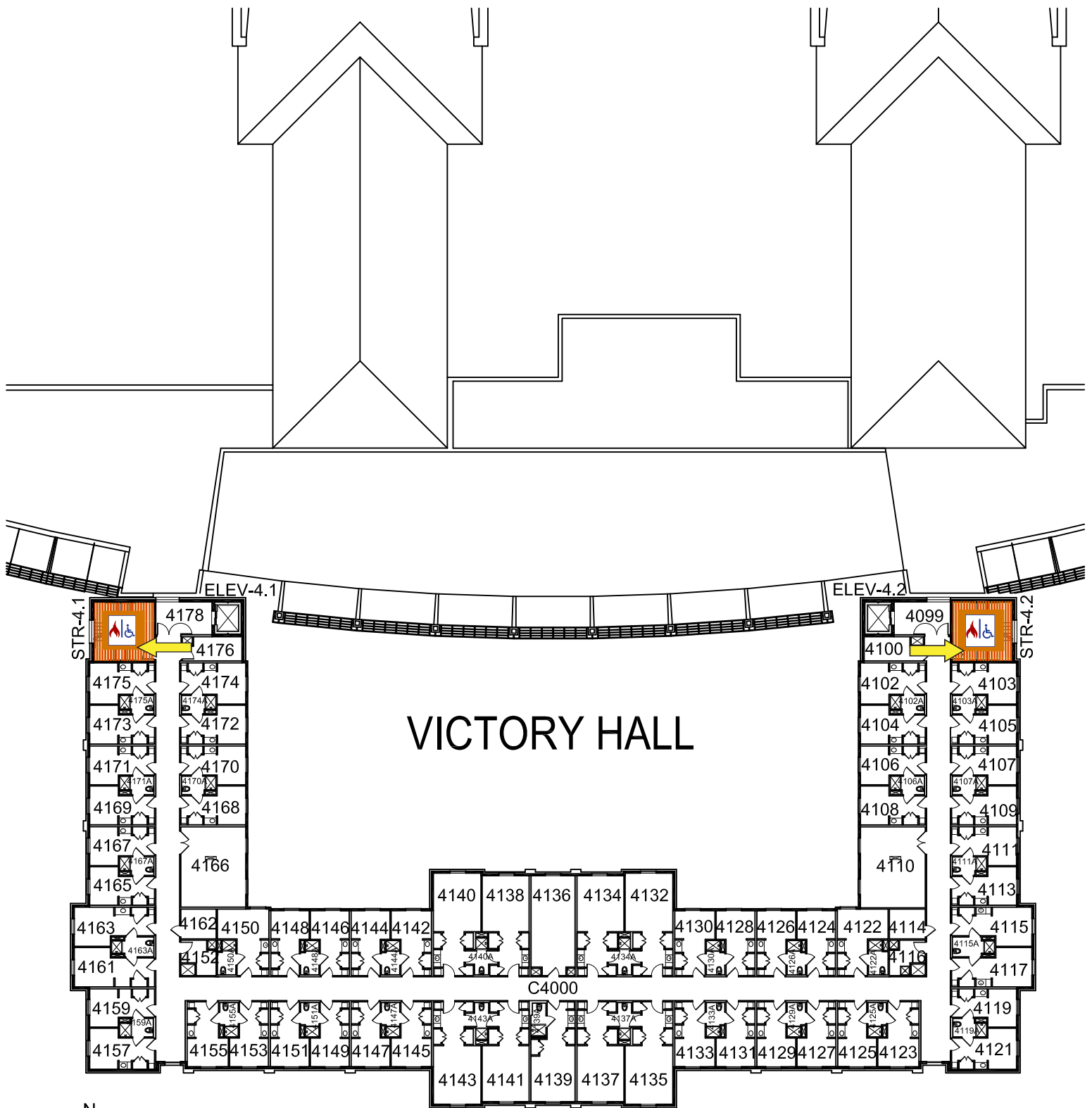


Exit

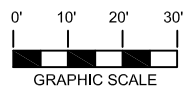


THIRD FLOOR PLAN





FOURTH FLOOR PLAN



**LEGEND**

-  Fire Refuge Area
-  Exit