

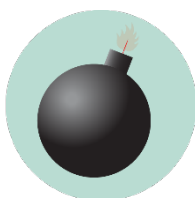
# ART ANNEX

## EMERGENCY GUIDELINES

**Call or text 911 in life threatening emergencies**



**FIRE**



**BOMB THREAT**



**GAS  
LEAK**



**HAZMAT**



**SEVERE  
WEATHER**



**HAZMAT**



**MEDICAL  
EMERGENCY**



**ACTIVE  
THREAT**

### Evacuation

**PROMPTS: Fire alarm, direction from the UNT Police or City of Denton Fire Department, an Eagle Alert, a visibly life-threatening situation**

- Gather those around you and quickly leave through the nearest exit.
- Ask those around you with limited mobility if they need help and provide assistance, as able.
- If you take notice of someone unable to evacuate, note their location and tell first responders as soon as possible.
- Those with access and functional needs should immediately go to the nearest fire refuge area and call 911.
- Move at least 200 feet away from the building and stay off fire lanes.
- Comply with directions from first responders.

### Shelter

**PROMPTS: Eagle Alert, Outdoor Warning Sirens**

- Go indoors immediately.
- Seek shelter on the lowest level of the building, away from windows and exterior walls.
- For tornadoes: Encourage others to shield their head and neck with arms and putting material such as furniture and blankets around themselves.
- If the event is HAZMAT related, completely turn off or seal off all external air sources including windows, doors, and air vents.
- Stay in shelter until an Eagle Alert is sent telling you it's safe to leave.

### Respond to a Medical Emergency

- Call 911 (or have someone call 911 for you).
- Send others to get an AED and to meet first responders at the door.
- Ask the individual if you have their permission to assist them.
  - If **YES**, provide first aid to the extent that you feel able .
  - If **NO**, move away from the individual and wait for first responders.
  - If **unconscious**, you have implied consent to provide assistance, as long as you are not negligent.
- Assist paramedics as needed when they arrive.
- Gather info and report the incident to Risk Management Services.

### Run. Hide. Fight. (Active Threat)

**PROMPTS: Eagle Alert; successive, loud shot noises; groups of individuals running and screaming**

- **RUN** and escape the active threat if possible.
- **HIDE** from the active threat if escape is not possible.
- **FIGHT** the attacker as a last resort and commit to your actions.

## **CAMPUS EMERGENCY CONTACTS**

<p><b>Any life-threatening emergency</b></p> <ul style="list-style-type: none"> <li>Active threat</li> <li>Acts or threats of violence</li> <li>Bomb threat</li> <li>Fire</li> <li>Hostage situation</li> <li>Life-threatening hazardous materials release</li> <li>Medical emergencies</li> <li>Natural gas leak</li> <li>Suicidal person</li> <li>Violent civil disturbance or demonstration</li> <li>Violent/threatening/hostile individual</li> </ul>	<h1 style="font-size: 48px; margin: 0;">911</h1> <p style="font-size: 24px; margin: 0;"><b><i>Call or text 911 in life-threatening emergencies</i></b></p>
<p><b>Any non-emergency concerns</b></p> <ul style="list-style-type: none"> <li>Civil disturbance or demonstration</li> <li>Disruptive person</li> <li>Elevator failure</li> <li>Suspicious person</li> </ul>	<p style="font-size: 24px; margin: 0;"><b>UNT Police</b></p> <p style="font-size: 24px; margin: 0;">940-565-3000</p>
<p><b>Maintenance-related issues</b></p> <ul style="list-style-type: none"> <li>Power outage</li> <li>Water leak or flooding</li> <li>Property damage</li> </ul>	<p style="font-size: 24px; margin: 0;"><b>UNT Facilities</b></p> <p style="font-size: 24px; margin: 0;">940-565-2700</p>
<p>Minor hazardous materials release</p>	<p style="font-size: 24px; margin: 0;"><b>UNT Risk Management</b></p> <p style="font-size: 24px; margin: 0;">940-565-2109</p>

**If you are unsure if a situation is or is not an emergency, always call 911.**

## **BUILDING EMERGENCY CONTACTS**

Name	Position	Daytime Contact Information	After-Hours Contact Information (optional)	Office Location
Eric Ligon	Associate Dean, Administrative Affairs	940-565-4028	940-565-4028 <a href="mailto:Eric.Ligon@unt.edu">Eric.Ligon@unt.edu</a>	Art 101
Valerie Hancock	Art Technician	940-369-6509	<a href="mailto:Valerie.Hancock@unt.edu">Valerie.Hancock@unt.edu</a>	Art Annex 143
Nicole Foran	Emer. Contact	940-369-7671	<a href="mailto:Nicole.Foran@unt.edu">Nicole.Foran@unt.edu</a>	Art 230 H

# ART ANNEX

## EMERGENCY LOCATIONS AND SUPPLIES



### **Shelter Areas**

- Interior restrooms, central hallway
- Rm 108 – Critique Room

### **Evacuation Assembly Area**

### **Evacuation Assembly Area**

- Lot 55



### **Medical Emergency Related Equipment**

- **First Aid Kits:**
  - North Wing, Classroom 135
  - South Wing, near eyewash station in central hallway
- **AEDs:** Central hallway near lockers

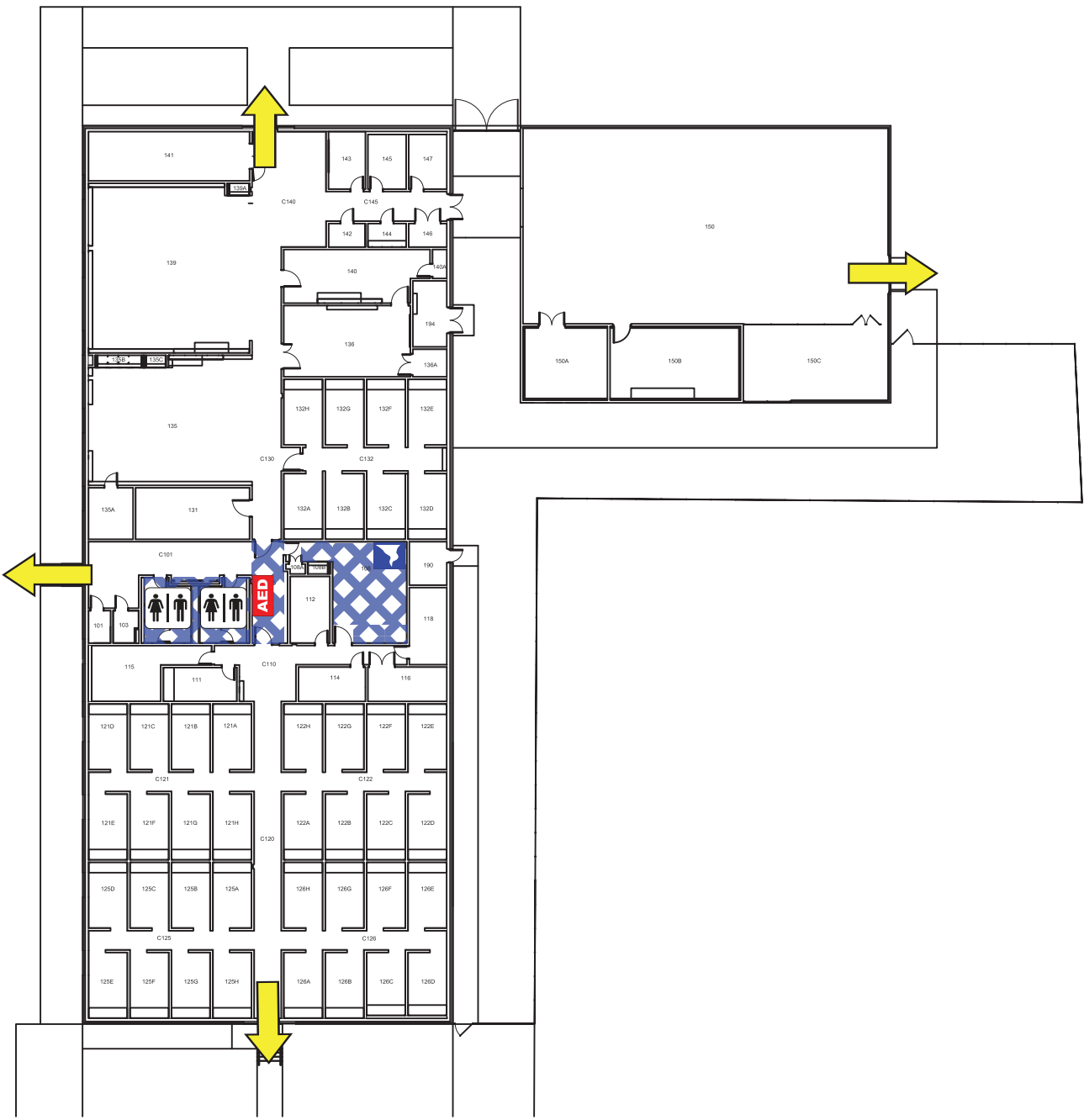


### **Special Emergency Procedures for Art Annex**

- **Eyewash stations/Shower:**
  - North side of building opposite door 136
  - Near door 132
  - Opposite Satellite Accumulation Area in South Wing central hallway
- Spill Response Stations located in South Wing

# ART ANNEX

## FIRST FLOOR PLAN



### LEGEND

 Automated External Defibrillator

 Exit

 Restrooms

 Shelter Area

