

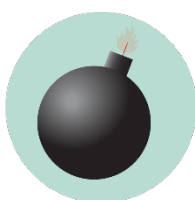
ART BUILDING

BUILDING EMERGENCY GUIDELINES

Call or text 911 in life threatening emergencies



FIRE



BOMB THREAT



**GAS
LEAK**



HAZMAT



**SEVERE
WEATHER**



HAZMAT



**MEDICAL
EMERGENCY**



**ACTIVE
THREAT**

Evacuation

PROMPTS: Fire alarm, direction from the UNT Police or City of Denton Fire Department, an Eagle Alert, a visibly life-threatening situation

- Gather those around you and quickly leave through the nearest exit.
- Ask those around you with limited mobility if they need help and provide assistance, as able.
- If you take notice of someone unable to evacuate, note their location and tell first responders as soon as possible.
- Those with access and functional needs should immediately go to the nearest fire refuge area and call 911.
- Move at least 200 feet away from the building and stay off fire lanes.
- Comply with directions from first responders.

Shelter

PROMPTS: Eagle Alert, Outdoor Warning Sirens

- Go indoors immediately.
- Seek shelter on the lowest level of the building, away from windows and exterior walls.
- For tornadoes: Encourage others to shield their head and neck with arms and putting material such as furniture and blankets around themselves.
- If the event is HAZMAT related, completely turn off or seal off all external air sources including windows, doors, and air vents.
- Stay in shelter until an Eagle Alert is sent telling you it's safe to leave.

Medical Emergency

- Call 911 (or have someone call 911 for you).
- Send others to get an AED and to meet first responders at the door.
- Ask the individual if you have their permission to assist them.
 - If **YES**, provide first aid to the extent that you feel able.
 - If **NO**, move away from the individual and wait for first responders.
 - If **unconscious**, you have implied consent to provide assistance, as long as you are not negligent.
- Assist paramedics as needed when they arrive.
- Gather info and report the incident to Risk Management Services.

Run. Hide. Fight.

PROMPTS: Eagle Alert; successive, loud shot noises; groups of individuals running and screaming

- **RUN** and escape the active threat if possible.
- **HIDE** from the active threat if escape is not possible.
- **FIGHT** the attacker as a last resort and commit to your actions.

CAMPUS EMERGENCY CONTACTS

| | |
|---|--|
| <p>Any life-threatening emergency Active threat Acts or threats of violence Bomb threat Fire Hostage situation Life-threatening hazardous materials release Medical emergencies Natural gas leak Suicidal person Violent civil disturbance or demonstration Violent/threatening/hostile individual</p> | <p><i>Call or text 911 in life-threatening emergencies</i> 911</p> |
| <p>Any non-emergency concerns Civil disturbance or demonstration Disruptive person Elevator failure Suspicious person</p> | <p><i>UNT Police</i> 940-565-3000</p> |
| <p>Maintenance-related issues Power outage Water leak or flooding Property damage</p> | <p><i>UNT Facilities</i> 940-565-2700</p> |
| <p>Minor hazardous materials release</p> | <p><i>UNT Risk Management</i> 940-565-2109</p> |

If you are unsure if a situation is or is not an emergency, always call 911.

ART BUILDING EMERGENCY LOCATIONS AND SUPPLIES



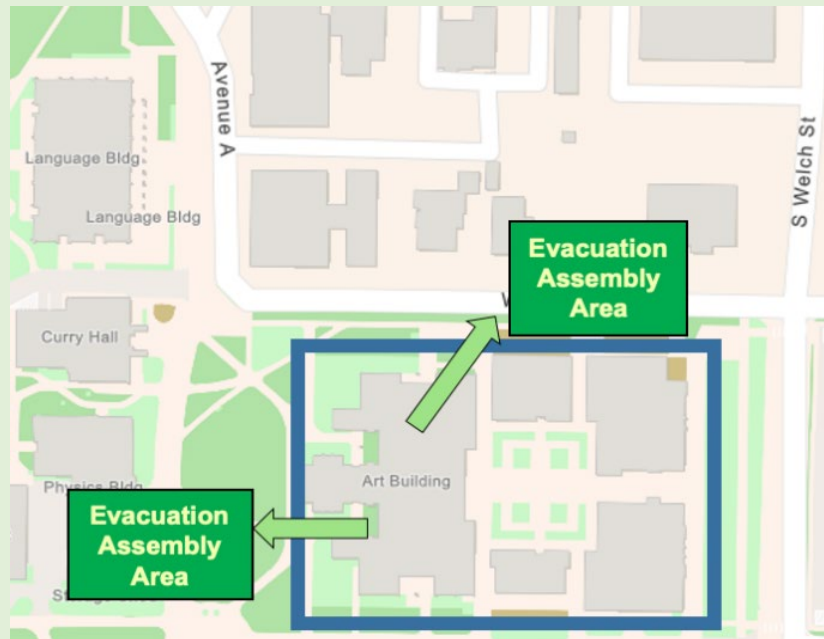
Shelter Areas

- The interior hallways or restrooms on the lowest floor you can get to.

Evacuation Assembly Area

Evacuation Assembly Area

- The church parking lot across Mulberry St. to the north or the grassy area by the Physics building to the west of the building *unless directed to go elsewhere by first responders or an Eagle Alert.*



Medical Emergency Related Equipment

- **First Aid Kits:** Located in labs, studios, and several of the classroom spaces.
- **AEDs:** Located on the 1st floor near the elevator and the 101 office suites.



Fire Refuge Areas: A temporary haven from the effects of a fire or other emergency that would normally require evacuation.

- There are six areas located at each stairwell on the 2nd and 3rd floor.
- The 4th floor has two located on the north and south stairwells.

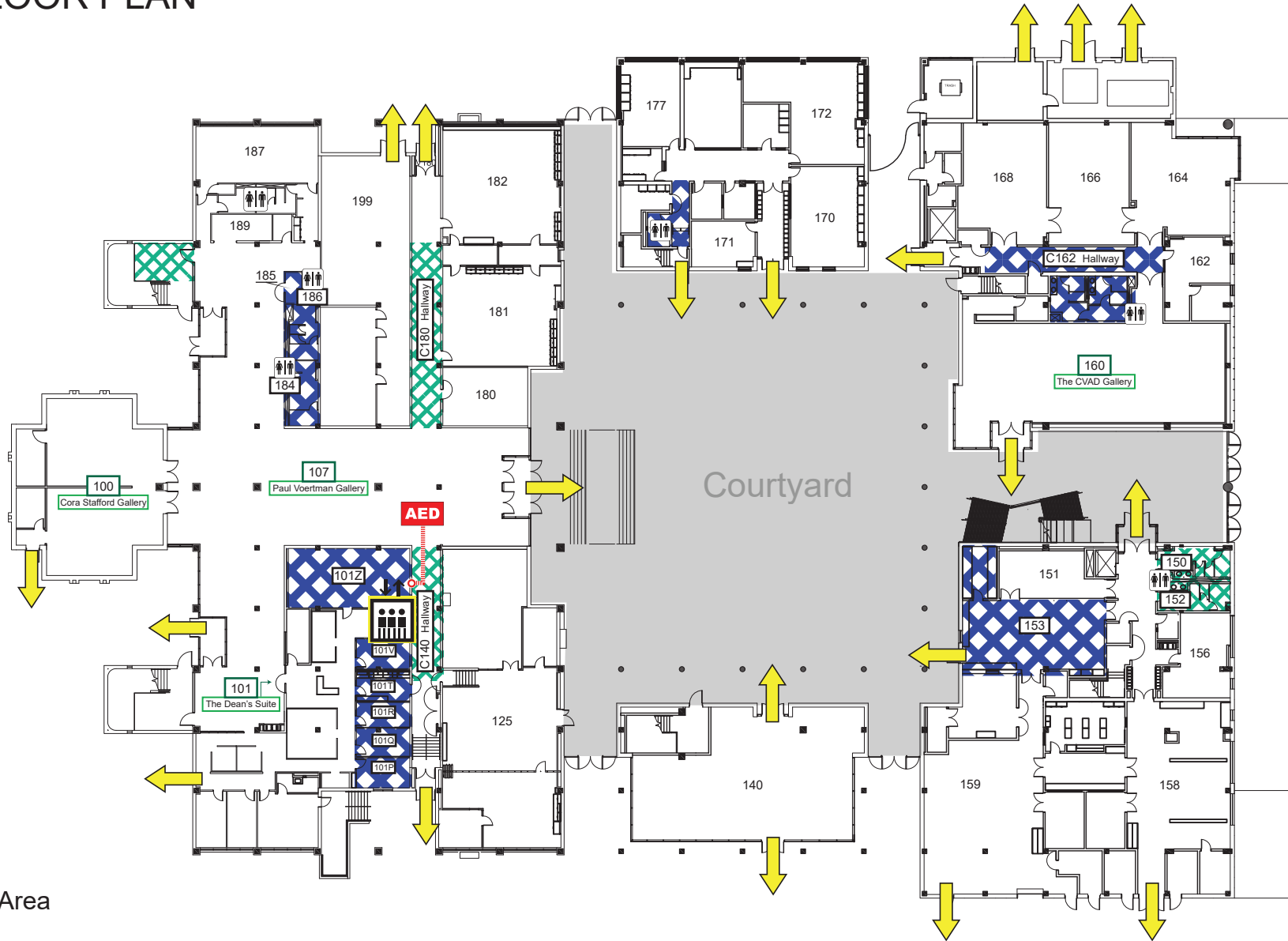


Special Emergency Procedures for Art Building:

- Eyewash stations are located in labs throughout the building.

ART BUILDING

FIRST FLOOR PLAN



LEGEND



Shelter Area



Alternative Shelter Area*



Exit



Automated External Defibrillator



Elevator
Do NOT use in a fire



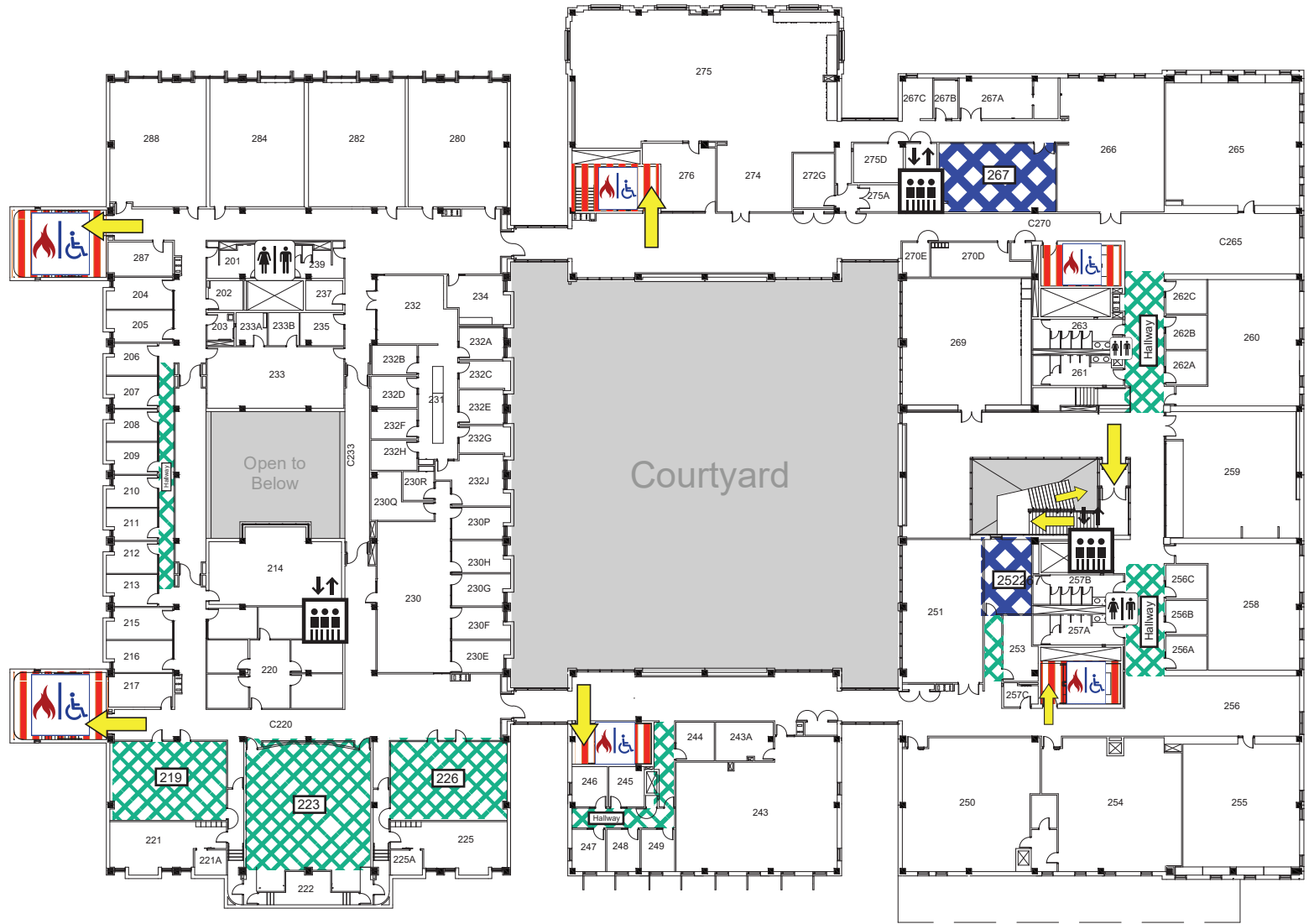
Restroom

* **Note about Shelters:** Shelters are identified as the safest locations within a building and are generally rooms without exterior walls or windows. In some instances, identified Shelter Areas may be inaccessible. When unable to access a **Shelter Area**, building occupants should move to an **Alternative Shelter Area**.



ART BUILDING

SECOND FLOOR PLAN



LEGEND



Shelter Area



Alternative Shelter Area*



Exit



Fire Refuge Area



Elevator
Do NOT use in a fire



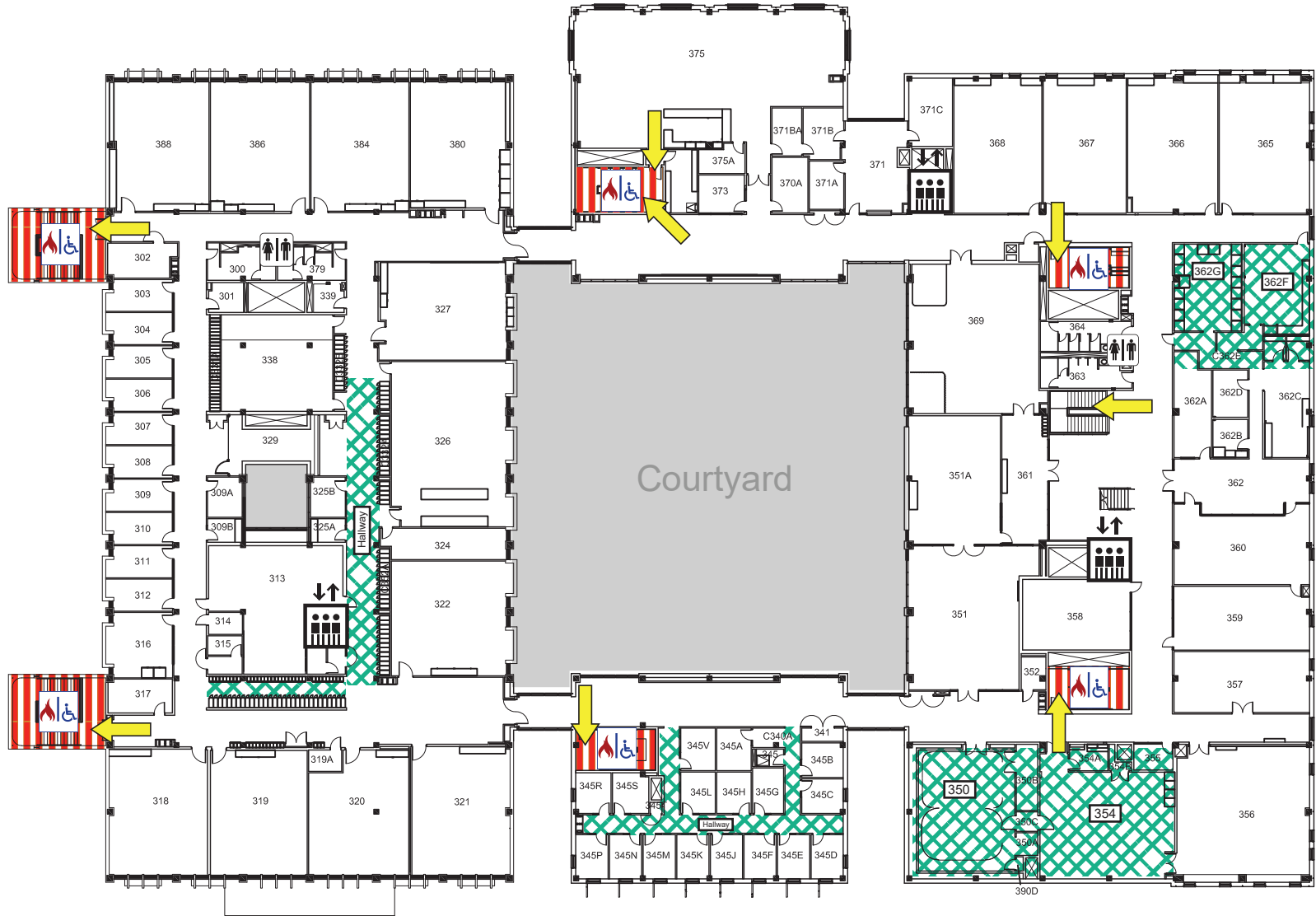
Restroom

* **Note about Shelters:** Shelters are identified as the safest locations within a building and are generally rooms without exterior walls or windows. In some instances, identified Shelter Areas may be inaccessible. When unable to access a **Shelter Area**, building occupants should move to an **Alternative Shelter Area**.



ART BUILDING

THIRD FLOOR PLAN



LEGEND



Alternative Shelter Area*



Exit



Fire Refuge Area



Elevator
Do NOT use in a fire



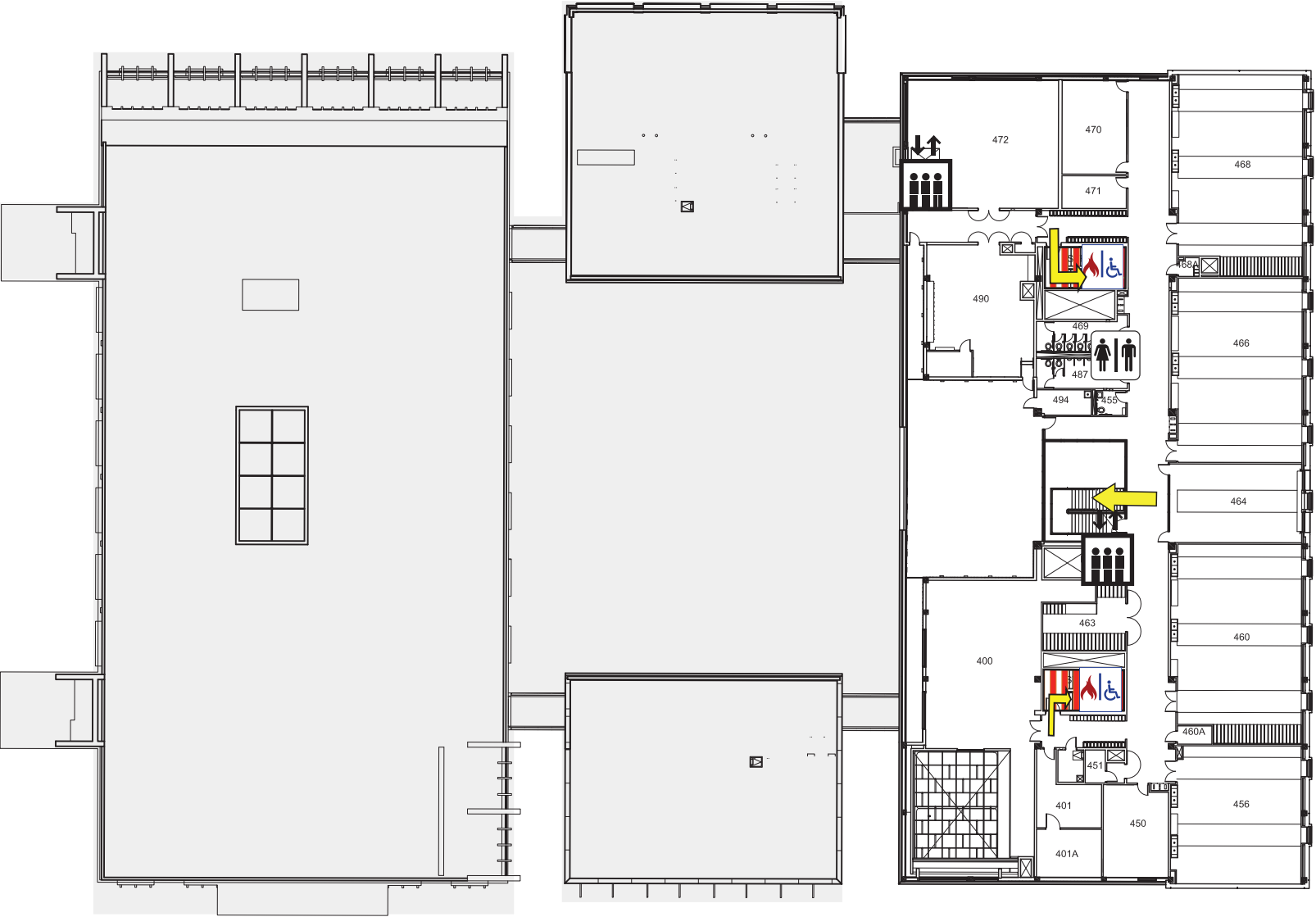
Restroom

* **Note about Shelters:** Shelters are identified as the safest locations within a building and are generally rooms without exterior walls or windows. In some instances, identified Shelter Areas may be inaccessible. When unable to access a **Shelter Area**, building occupants should move to an **Alternative Shelter Area**.







ART BUILDING

FOURTH FLOOR PLAN



LEGEND

-  Exit
-  Fire Refuge Area

-  Elevator
Do NOT use in a fire
-  Restroom

