



# FACILITIES COMPLEX BUILDING EMERGENCY GUIDELINES

**Call or text 911 in life threatening emergencies**



**FIRE**



**BOMB THREAT**



**GAS  
LEAK**



**HAZMAT**



**SEVERE  
WEATHER**



**HAZMAT**



**MEDICAL  
EMERGENCY**



**ACTIVE THREAT**

## Evacuation

**PROMPTS: Fire alarm, direction from the UNT Police or City of Denton Fire Department, an Eagle Alert, a visibly life-threatening situation**

- Gather those around you and quickly leave through the nearest exit.
- Ask those around you with limited mobility if they need help and provide assistance, as able.
- If you take notice of someone unable to evacuate, note their location and tell first responders as soon as possible.
- Those with access and functional needs should immediately go to the nearest fire refuge area and call 911.
- Move at least 200 feet away from the building and stay off fire lanes.
- Comply with directions from first responders.

## Shelter

**PROMPTS: Eagle Alert, Outdoor Warning Sirens**

- Go indoors immediately.
- Seek shelter on the lowest level of the building, away from windows and exterior walls.
- For tornadoes: Encourage others to shield their head and neck with arms and putting material such as furniture and blankets around themselves.
- If the event is HAZMAT related, completely turn off or seal off all external air sources including windows, doors, and air vents.
- Stay in shelter until an Eagle Alert is sent telling you it's safe to leave.

## Medical Emergency

- Call 911 (or have someone call 911 for you).
- Send others to get an AED and to meet first responders at the door.
- Ask the individual if you have their permission to assist them.
  - If **YES**, provide first aid to the extent that you feel able.
  - If **NO**, move away from the individual and wait for first responders.
  - If **unconscious**, you have implied consent to provide assistance, as long as you are not negligent.
- Assist paramedics as needed when they arrive.
- Gather info and report the incident to Risk Management Services.

## Run. Hide. Fight.

**PROMPTS: Eagle Alert; successive, loud shot noises; groups of individuals running and screaming**

- **RUN** and escape the active threat if possible.
- **HIDE** from the active threat if escape is not possible.
- **FIGHT** the attacker as a last resort and commit to your actions.

## **CAMPUS EMERGENCY CONTACTS**

<p><b>Any life-threatening emergency</b></p> <ul style="list-style-type: none"> <li>Active threat</li> <li>Acts or threats of violence</li> <li>Bomb threat</li> <li>Fire</li> <li>Hostage situation</li> <li>Life-threatening hazardous materials release</li> <li>Medical emergencies</li> <li>Natural gas leak</li> <li>Suicidal person</li> <li>Violent civil disturbance or demonstration</li> <li>Violent/threatening/hostile individual</li> </ul>	<p style="text-align: center;"><b>911</b></p> <p style="text-align: center;"><b><i>Call or text 911 in life-threatening emergencies</i></b></p>
<p><b>Any non-emergency concerns</b></p> <ul style="list-style-type: none"> <li>Civil disturbance or demonstration</li> <li>Disruptive person</li> <li>Elevator failure</li> <li>Suspicious person</li> </ul>	<p style="text-align: center;"><b>UNT Police</b></p> <p style="text-align: center;"><b>940-565-3000</b></p>
<p><b>Maintenance-related issues</b></p> <ul style="list-style-type: none"> <li>Power outage</li> <li>Water leak or flooding</li> <li>Property damage</li> </ul>	<p style="text-align: center;"><b>UNT Facilities</b></p> <p style="text-align: center;"><b>940-565-2700</b></p>
<p>Minor hazardous materials release</p>	<p style="text-align: center;"><b>UNT Risk Management</b></p> <p style="text-align: center;"><b>940-565-2109</b></p>
<p>Building Safety Contact:</p>	<p style="text-align: center;"><b>Find Here:</b></p> <p style="text-align: center;"><a href="#"><u>Building Representative Program</u></a></p> <p><b>Full link:</b></p> <p><a href="https://facilities.unt.edu/resources/building-representative-program.html"><u>https://facilities.unt.edu/resources/building-representative-program.html</u></a></p>

***If you are unsure if a situation is or is not an emergency, always call 911.***

# **FACILITIES COMPLEX**

## **EMERGENCY LOCATIONS AND SUPPLIES**



### ***Shelter Areas***

- *Facilities Office Building* in the interior hallway between rooms 150 and 158.
- *Facilities Services Building* in the interior hallways between rooms 150-160 and 128-130.
- *Facilities Ground Building*: 102H.

### **Evacuation Assembly Area**

### ***Evacuation Assembly Area***

- Parking Lot 17, north of West Hall, *unless directed to go elsewhere by first responders or an Eagle Alert.*
- *See the Facilities Complex Emergency Locations map below.*



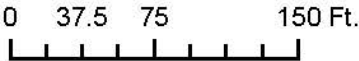
### ***Medical Emergency Related Equipment***

- **First Aid Kits:** Support & services building, custodial building, grounds building, recycling warehouse building, and administration building.
- **Stop the Bleed:** Located in AED cabinets
- **AEDs:** *Service Building:* in hallway between rooms 125A and 124; *Admin Building:* in hallway outside restrooms – opposite stairs.
- **Fire Extinguishers:** Located in warehouse #1/#2/#3, support and services building, stores warehouse, garage area, facilities carpenter shop, welding shop, custodial building, grounds, office building, paint shop, concrete shop, fuel pumps, garage storage by compactor and personnel.



Legend

- Shelter
- Evacuation Assembly Area



PRINTABLE UP TO 18x24      DATE: 2021/02/10      AUTHOR: smt0238

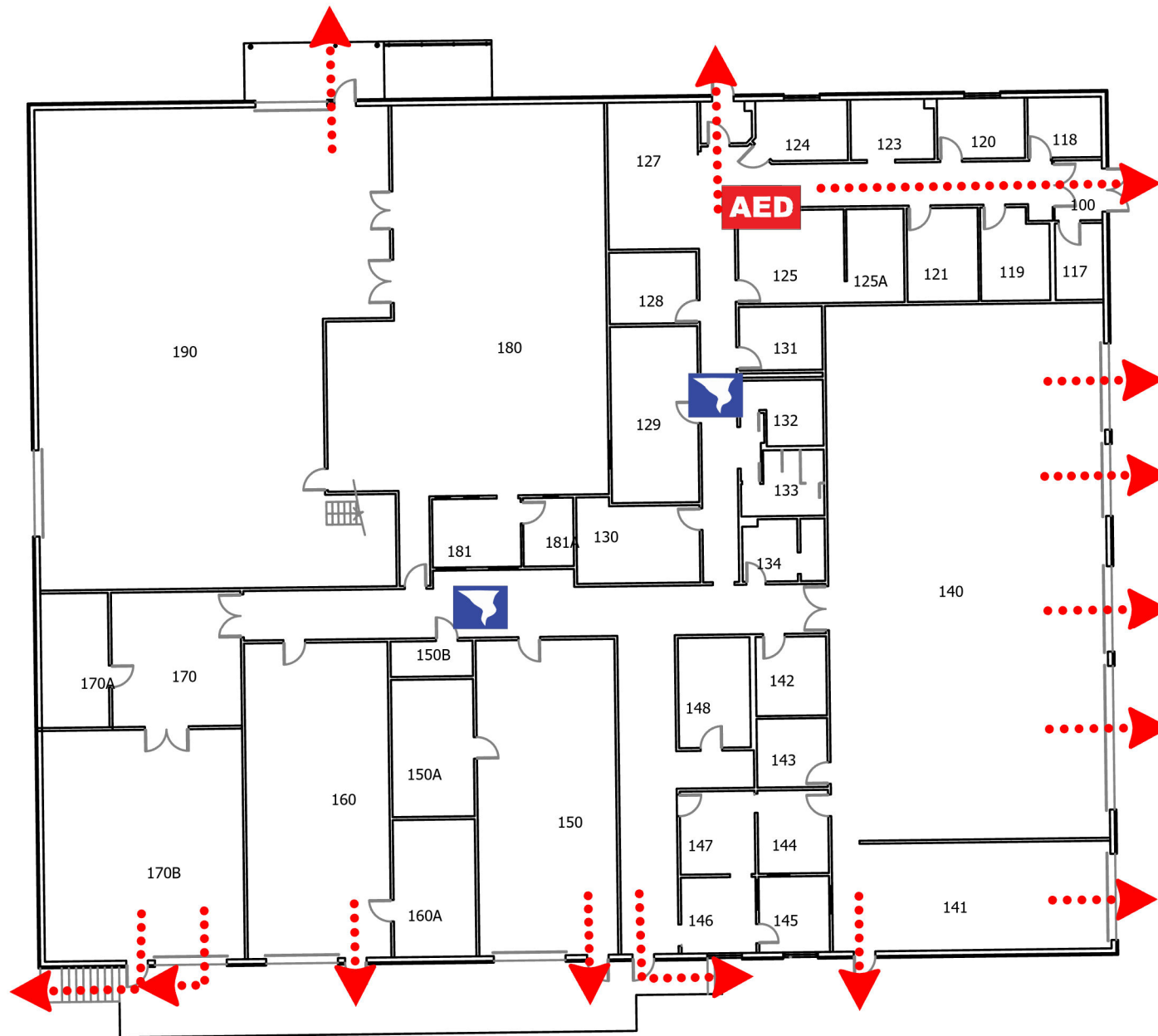
Data is compiled from various sources. Accuracy or precision is not guaranteed, it may not reflect all existing conditions. For planning purposes only, not for design or construction.

FACILITIES GIS  
1155 UNION CIRCLE #311040, DENTON, TX 76203-5017  
940.369.7532 / 7123 | Facilities.GIS@unt.edu



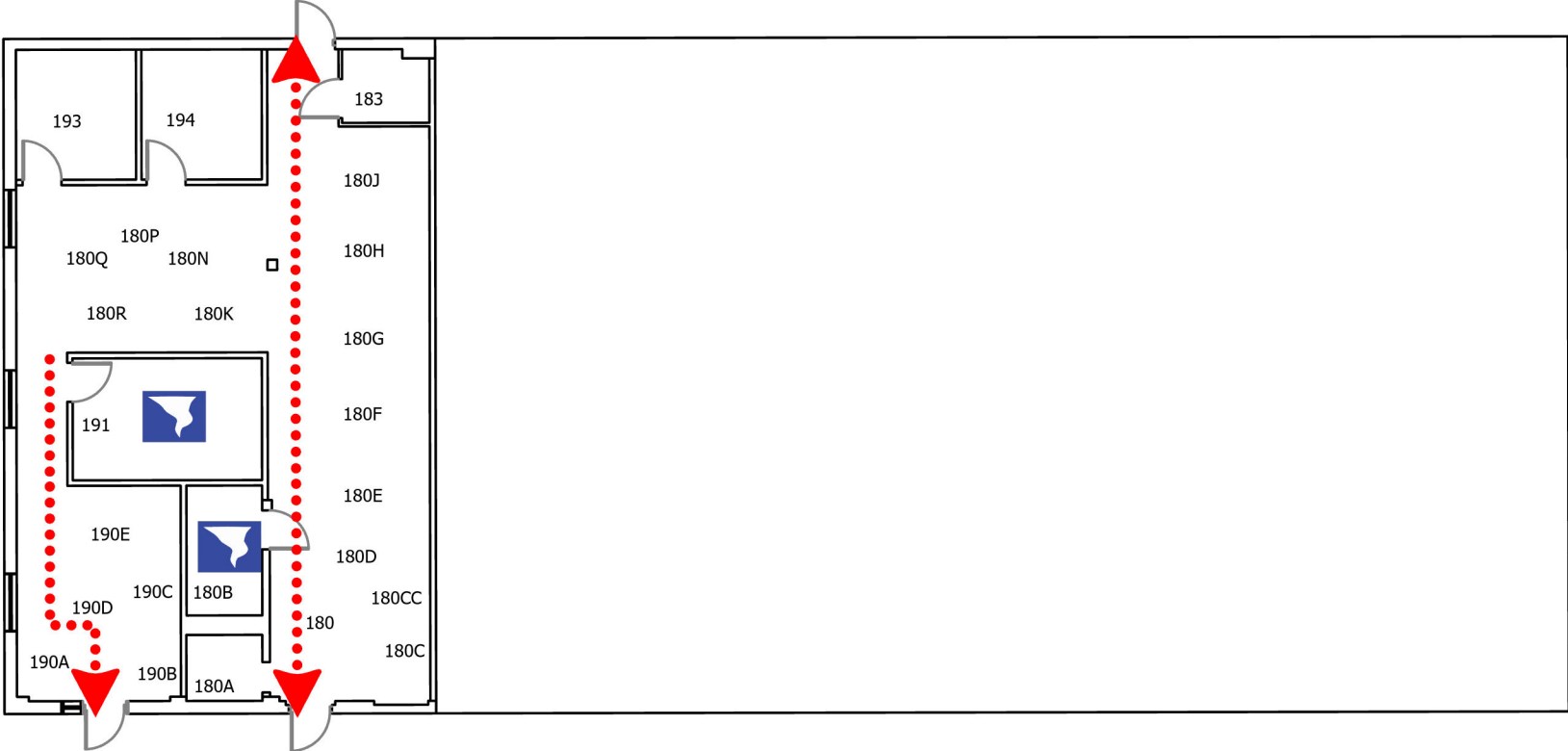
# FACILITIES SERVICE BUILDING

## FIRST FLOOR



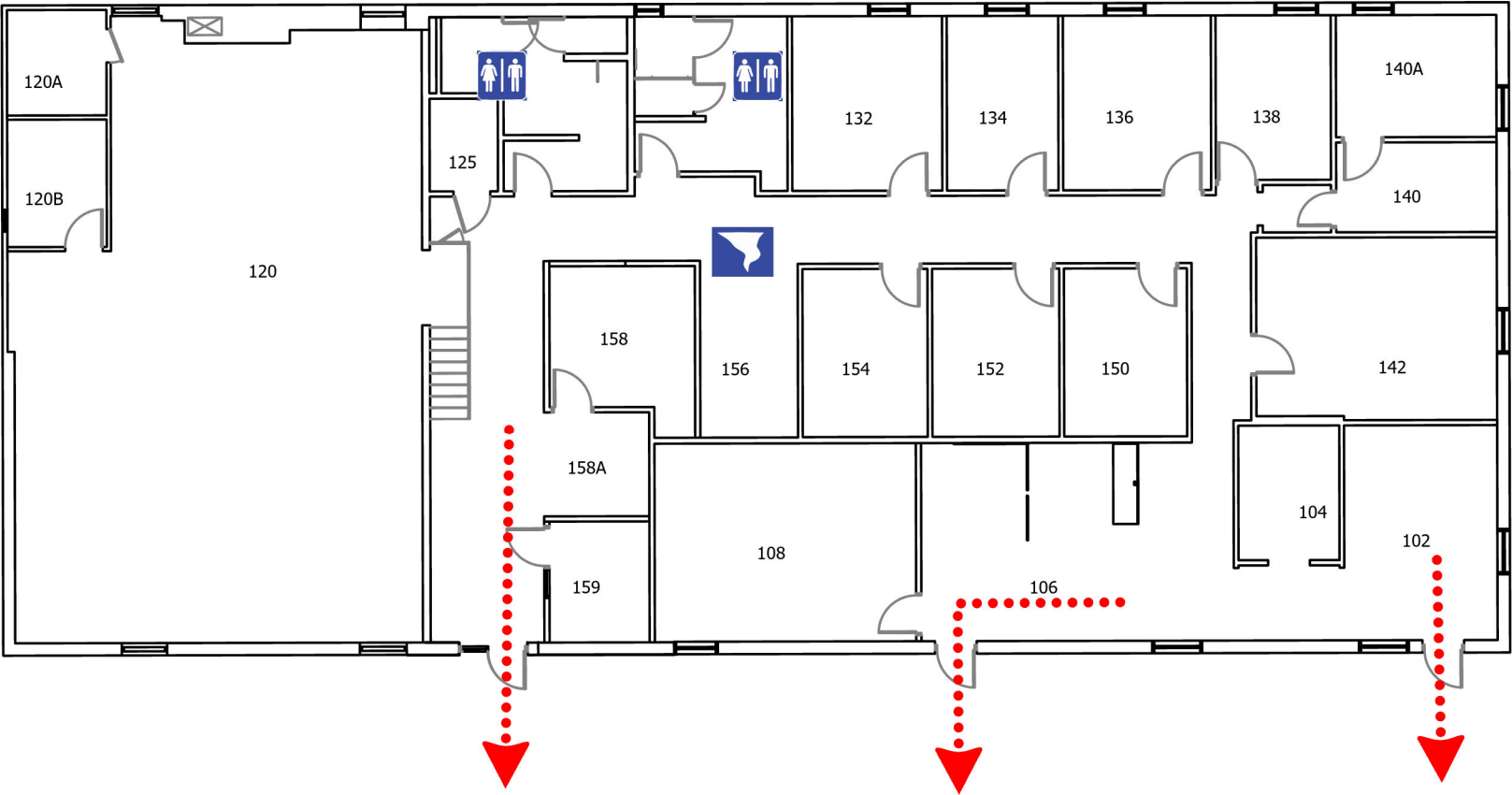
# FACILITIES OFFICE BUILDING

## LOWER LEVEL



# FACILITIES OFFICE BUILDING

## FIRST FLOOR



 Restroom

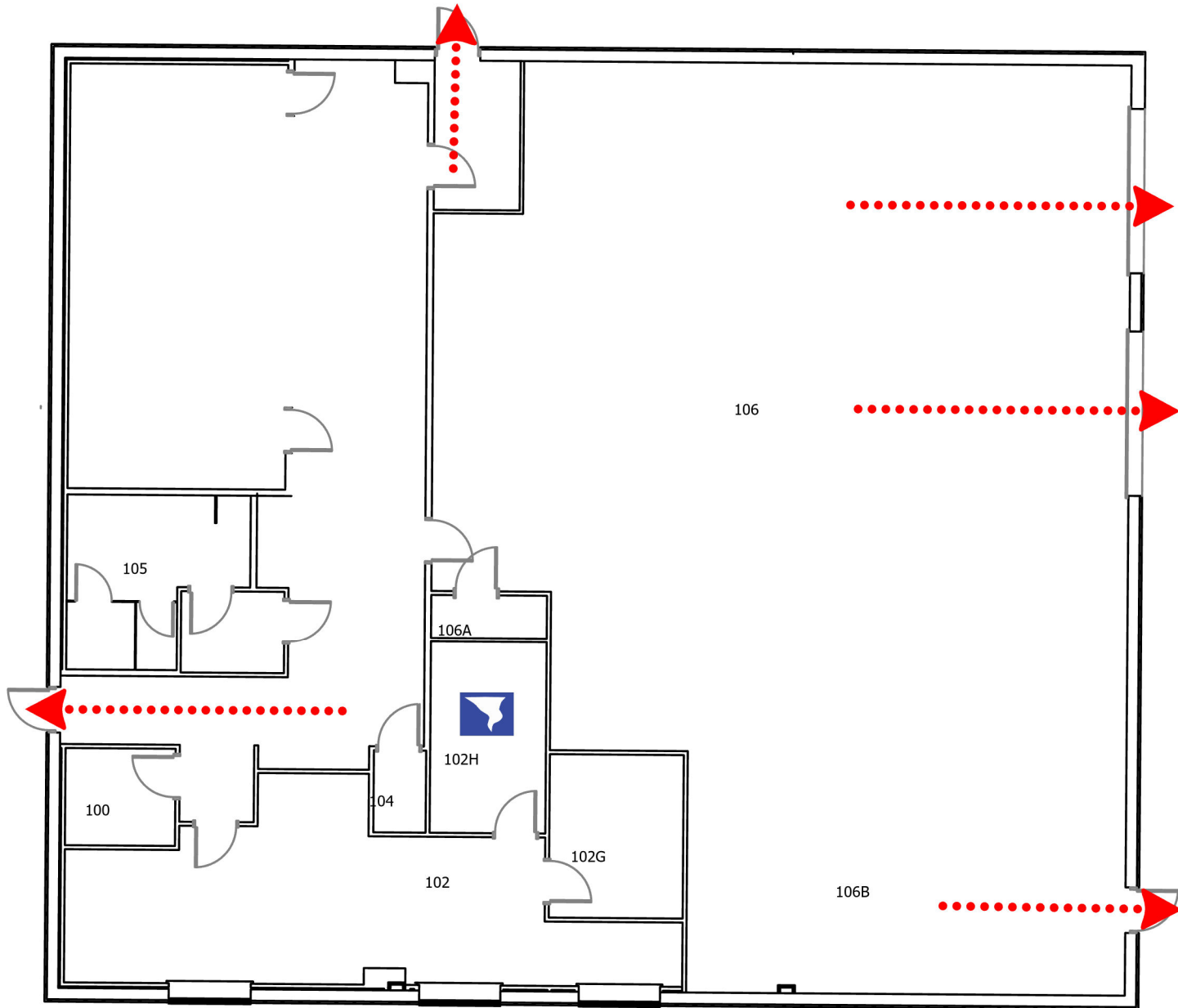
 Shelter Area

 AED

 Exit

# FACILITIES GROUNDS BUILDING

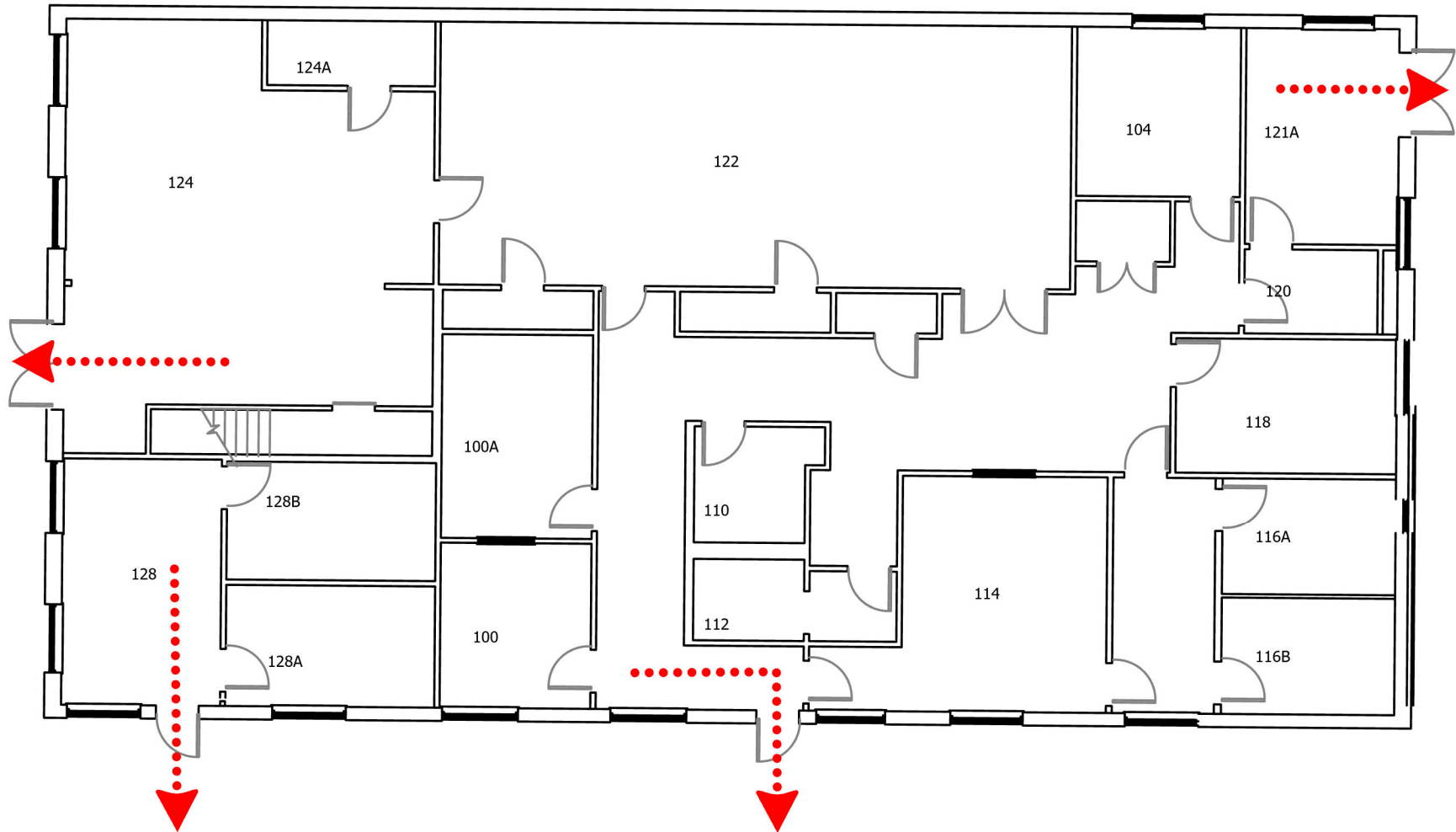
## FIRST FLOOR





# FACILITIES CUSTODIAL SERVICES BLDG

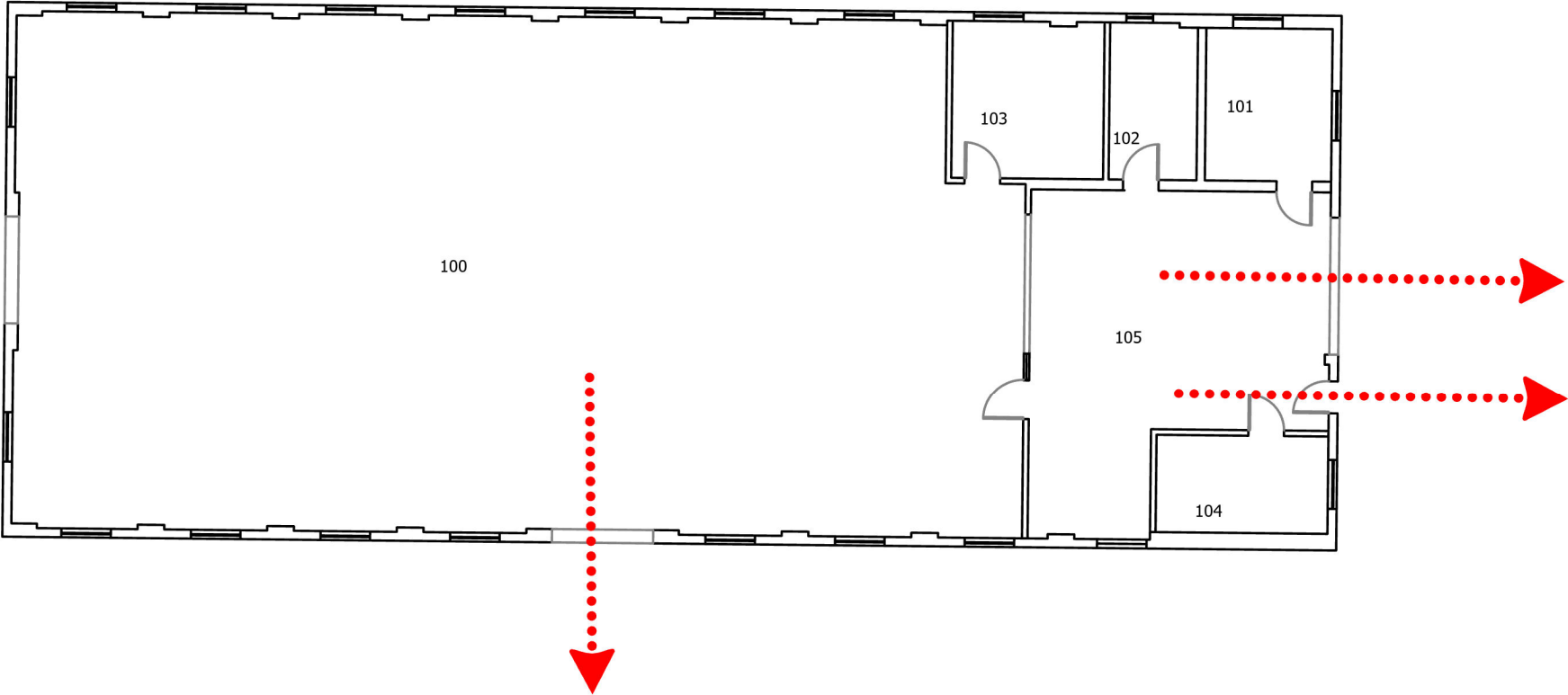
## FIRST FLOOR



..... Exit

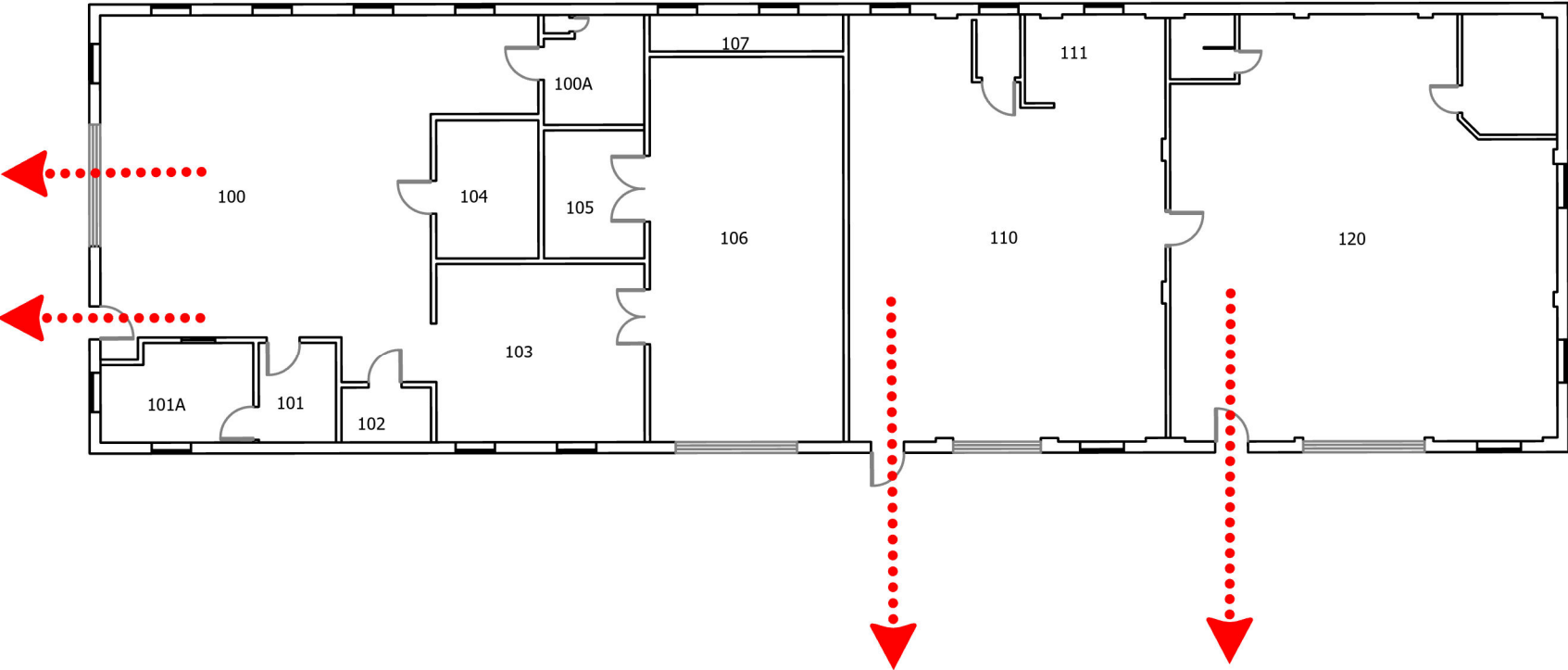
# FACILITIES CARPENTER SHOP

## FIRST FLOOR



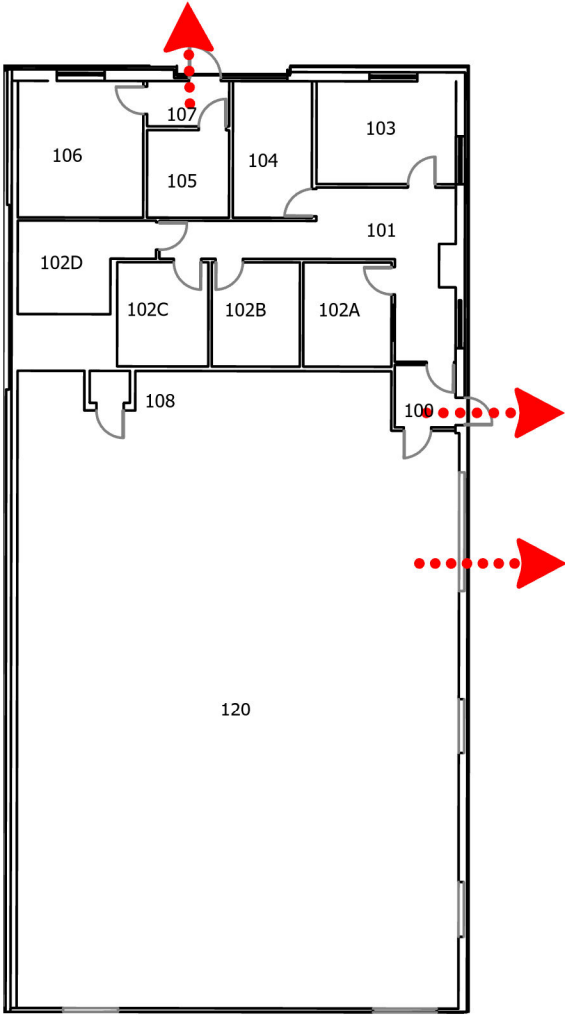
# FACILITIES PAINT SHOP

## FIRST FLOOR



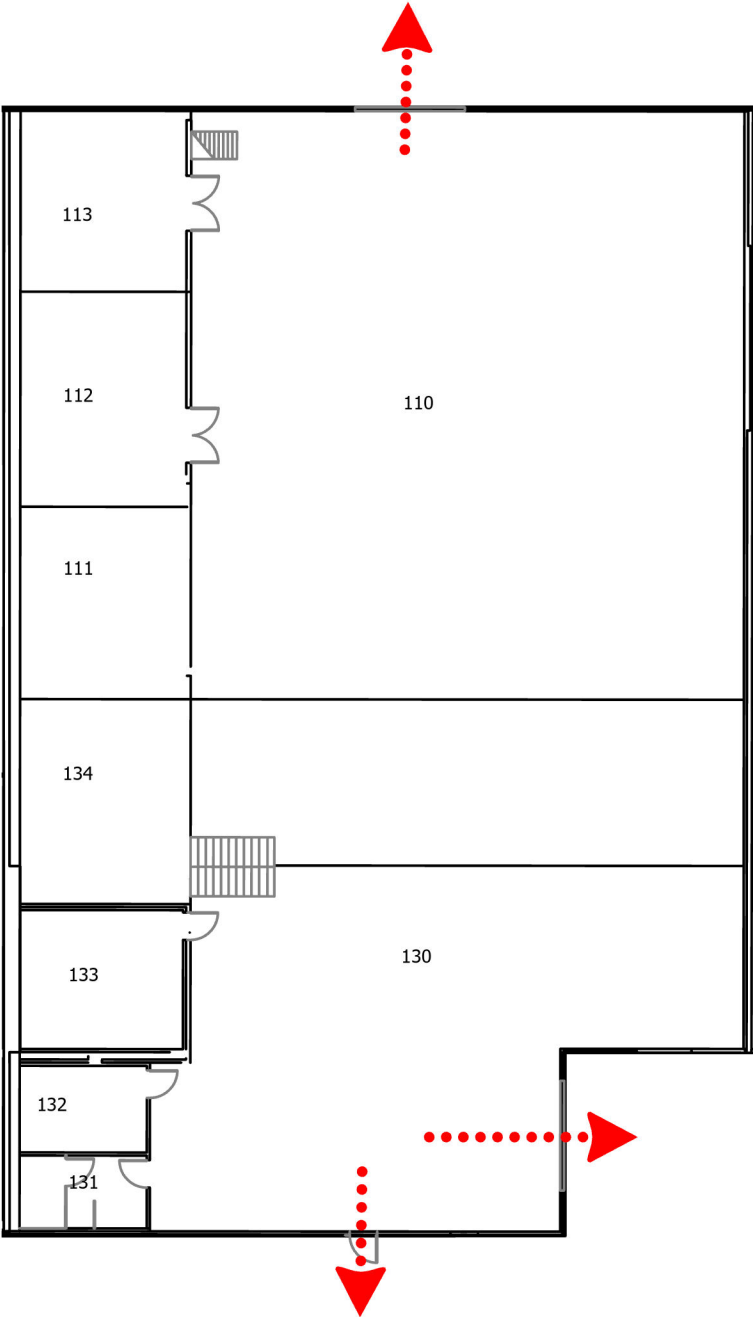
# FACILITIES WAREHOUSE #1

## FIRST FLOOR



# FACILITIES WAREHOUSE #2

## FIRST FLOOR



# FACILITIES WAREHOUSE #3

## FIRST FLOOR

