



HONORS HALL EMERGENCY GUIDELINES

Call or text 911 in life threatening emergencies



FIRE



BOMB THREAT



**GAS
LEAK**



HAZMAT



**SEVERE
WEATHER**



HAZMAT



**MEDICAL
EMERGENCY**



ACTIVE THREAT

Evacuation

PROMPTS: Fire alarm, direction from the UNT Police or City of Denton Fire Department, an Eagle Alert, a visibly life-threatening situation

- Gather those around you and quickly leave through the nearest exit.
- Ask those around you with limited mobility if they need help and provide assistance, as able.
- If you take notice of someone unable to evacuate, note their location and tell first responders as soon as possible.
- Those with access and functional needs should immediately go to the nearest fire refuge area and call 911.
- Move at least 200 feet away from the building and stay off fire lanes.
- Comply with directions from first responders.

Shelter

PROMPTS: Eagle Alert, Outdoor Warning Sirens

- Go indoors immediately.
- Seek shelter on the lowest level of the building, away from windows and exterior walls.
- For tornadoes: Encourage others to shield their head and neck with arms and putting material such as furniture and blankets around themselves.
- If the event is HAZMAT related, completely turn off or seal off all external air sources including windows, doors, and air vents.
- Stay in shelter until an Eagle Alert is sent telling you it's safe to leave.

Respond to a Medical Emergency

- Call 911 (or have someone call 911 for you).
- Send others to get an AED and to meet first responders at the door.
- Ask the individual if you have their permission to assist them.
 - If **YES**, provide first aid to the extent that you feel able.
 - If **NO**, move away from the individual and wait for first responders.
 - If **unconscious**, you have implied consent to provide assistance, as long as you are not negligent.
- Assist paramedics as needed when they arrive.
- Gather info and report the incident to Risk Management Services.

Run. Hide. Fight. (Active Threat)

PROMPTS: Eagle Alert; successive, loud shot noises; groups of individuals running and screaming

- RUN and escape the active threat if possible.
- HIDE from the active threat if escape is not possible.
- FIGHT the attacker as a last resort and commit to your actions.

CAMPUS EMERGENCY CONTACTS

<p>Any life-threatening emergency</p> <ul style="list-style-type: none"> Active threat Acts or threats of violence Bomb threat Fire Hostage situation Life-threatening hazardous materials release Medical emergencies Natural gas leak Suicidal person Violent civil disturbance or demonstration Violent/threatening/hostile individual 	<p style="text-align: center;">911</p> <p style="text-align: center;"><i>Call or text 911 in life-threatening emergencies</i></p>
<p>Any non-emergency concerns</p> <ul style="list-style-type: none"> Civil disturbance or demonstration Disruptive person Elevator failure Suspicious person 	<p style="text-align: center;">UNT Police</p> <p style="text-align: center;">940-565-3000</p>
<p>Maintenance-related issues</p> <ul style="list-style-type: none"> Power outage Water leak or flooding Property damage 	<p style="text-align: center;">UNT Facilities</p> <p style="text-align: center;">940-565-2700</p>
<p>Minor hazardous materials release</p>	<p style="text-align: center;">UNT Risk Management</p> <p style="text-align: center;">940-565-2109</p>
<p>Building Safety Contact:</p>	<p style="text-align: center;">Find Here:</p> <p style="text-align: center;"><u>Building Representative Program</u></p> <p>Full link:</p> <p><u>https://facilities.unt.edu/resources/building-representative-program.html</u></p>

If you are unsure if a situation is or is not an emergency, always call 911.

HONORS HALL

EMERGENCY LOCATIONS AND SUPPLIES



Shelter Areas

- 1st floor interior hallways and restrooms

Evacuation Assembly Area

Evacuation Assembly Area

- Grassy area between Rawlins and Gateway Center



Medical Emergency Related Equipment

- **Stop the Bleed Kit:** Located in AED cabinet
- **AED:** 1st floor lobby near elevator



Fire Refuge Areas: A temporary haven from the effects of a fire or other emergency that would normally require evacuation.

- 2nd and 3rd floor stairwells

HONORS HALL

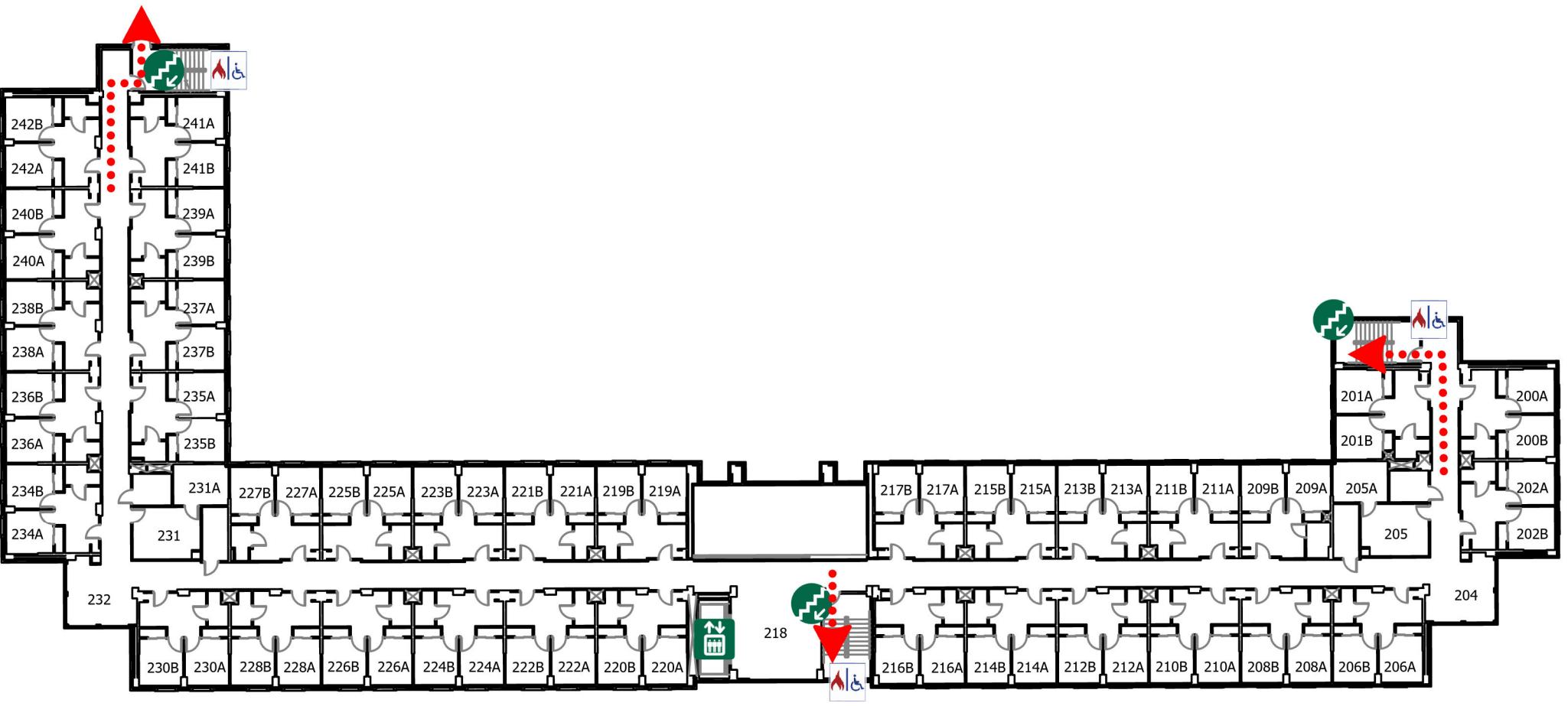
FIRST FLOOR



-  Elevator
-  Stairs
-  Shelter Area
-  AED
-  Exit

HONORS HALL

SECOND FLOOR

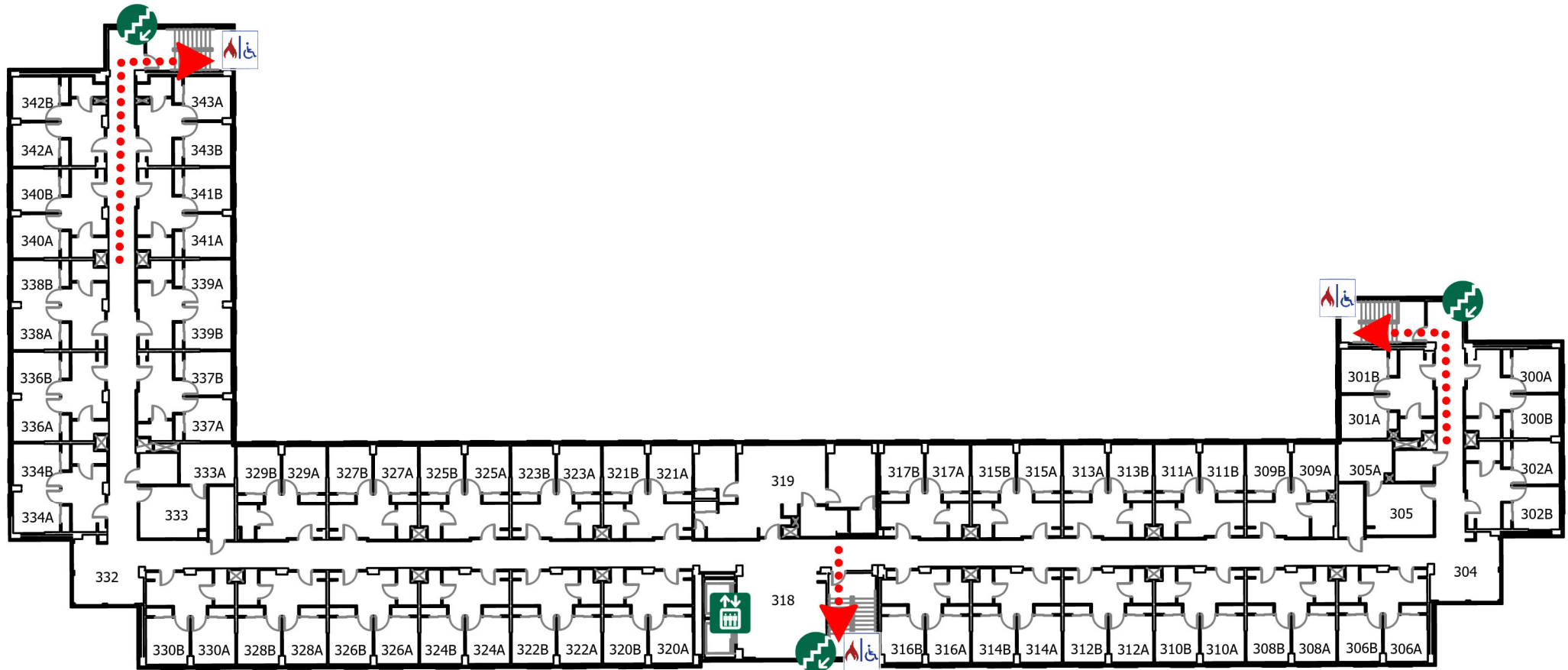


-  Elevator
-  Stairs
-  Refuge Area
-  Exit

HONORS HALL

THIRD FLOOR

N



Elevator



Stairs



Refuge Area

Exit