

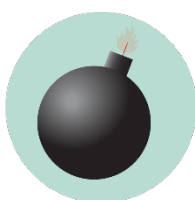
# CHILTON HALL

## BUILDING EMERGENCY GUIDELINES

**Call or text 911 in life threatening emergencies**



**FIRE**



**BOMB THREAT**



**GAS  
LEAK**



**HAZMAT**



**SEVERE  
WEATHER**



**HAZMAT**

### Evacuation

**PROMPTS: Fire alarm, direction from the UNT Police or City of Denton Fire Department, an Eagle Alert, a visibly life-threatening situation**

- Gather those around you and quickly leave through the nearest exit.
- Ask those around you with limited mobility if they need help and provide assistance, as able.
- If you take notice of someone unable to evacuate, note their location and tell first responders as soon as possible.
- Those with access and functional needs should immediately go to the nearest fire refuge area and call 911.
- Move at least 200 feet away from the building and stay off fire lanes.
- Comply with directions from first responders.

### Shelter

**PROMPTS: Eagle Alert, Outdoor Warning Sirens**

- Go indoors immediately.
- Seek shelter on the lowest level of the building, away from windows and exterior walls.
- For tornadoes: Encourage others to shield their head and neck with arms and putting material such as furniture and blankets around themselves.
- If the event is HAZMAT related, completely turn off or seal off all external air sources including windows, doors, and air vents.
- Stay in shelter until an Eagle Alert is sent telling you it's safe to leave.

### Medical Emergency

- Call 911 (or have someone call 911 for you).
- Send others to get an AED and to meet first responders at the door.
- Ask the individual if you have their permission to assist them.
  - If **YES**, provide first aid to the extent that you feel able .
  - If **NO**, move away from the individual and wait for first responders.
  - If **unconscious**, you have implied consent to provide assistance, as long as you are not negligent.
- Assist paramedics as needed when they arrive.
- Gather info and report the incident to Risk Management Services.

### Run. Hide. Fight.

**PROMPTS: Eagle Alert; successive, loud shot noises; groups of individuals running and screaming**

- **RUN** and escape the active threat if possible.
- **HIDE** from the active threat if escape is not possible.
- **FIGHT** the attacker as a last resort and commit to your actions.



**MEDICAL  
EMERGENCY**



**ACTIVE  
THREAT**

## **CAMPUS EMERGENCY CONTACTS**

<p><b>Any life-threatening emergency</b> Active threat Acts or threats of violence Bomb threat Fire Hostage situation Life-threatening hazardous materials release Medical emergencies Natural gas leak Suicidal person Violent civil disturbance or demonstration Violent/threatening/hostile individual</p>	<p><b><i>Call or text 911 in life-threatening emergencies</i></b> <b>911</b></p>
<p><b>Any non-emergency concerns</b> Civil disturbance or demonstration Disruptive person Elevator failure Suspicious person</p>	<p><b><i>UNT Police</i></b> <b>940-565-3000</b></p>
<p><b>Maintenance-related issues</b> Power outage Water leak or flooding Property damage</p>	<p><b><i>UNT Facilities</i></b> <b>940-565-2700</b></p>
<p>Minor hazardous materials release</p>	<p><b><i>UNT Risk Management</i></b> <b>940-565-2109</b></p>

***If you are unsure if a situation is or is not an emergency, always call 911.***

# CHILTON HALL EMERGENCY LOCATIONS AND SUPPLIES



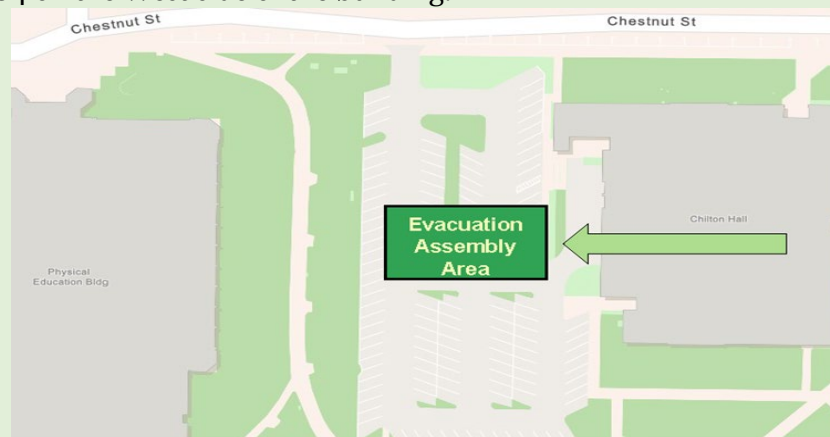
## **Shelter Areas**

- Direct all individuals in assigned area to go to the nearest shelter areas:
  - **Media Library** (no reception in shelter area)
  - **First & Second Floor Bathrooms**
  - **Interior Second Floor Classrooms**

## Evacuation Assembly Area

## **Evacuation Assembly Area**

- Lot 04 on the West side of the building.



## **Medical Emergency Related Equipment**

- **First Aid Kits:** Chilton Hall 111, 112, 116, 121, 122, 204E, 209C, 211, 218B, 243, 255, 255-A, 273D, 289B, 289E, 302, 331, 390F
- **Stop the Bleed Kits:** Chilton Hall 121, 255, 289B
- **AEDs:** The AED for this building can be located outside Media Library right of the first-floor staircase



**Fire Refuge Areas:** A temporary haven from the effects of a fire or other emergency that would normally require evacuation.

- *2<sup>nd</sup> floor* area located on the west side stairwell (near 238QA).
- *3<sup>rd</sup> floor* evacuation chair is in west side stairwell next to room 343A.



***Special Emergency Procedures for Chilton Hall***

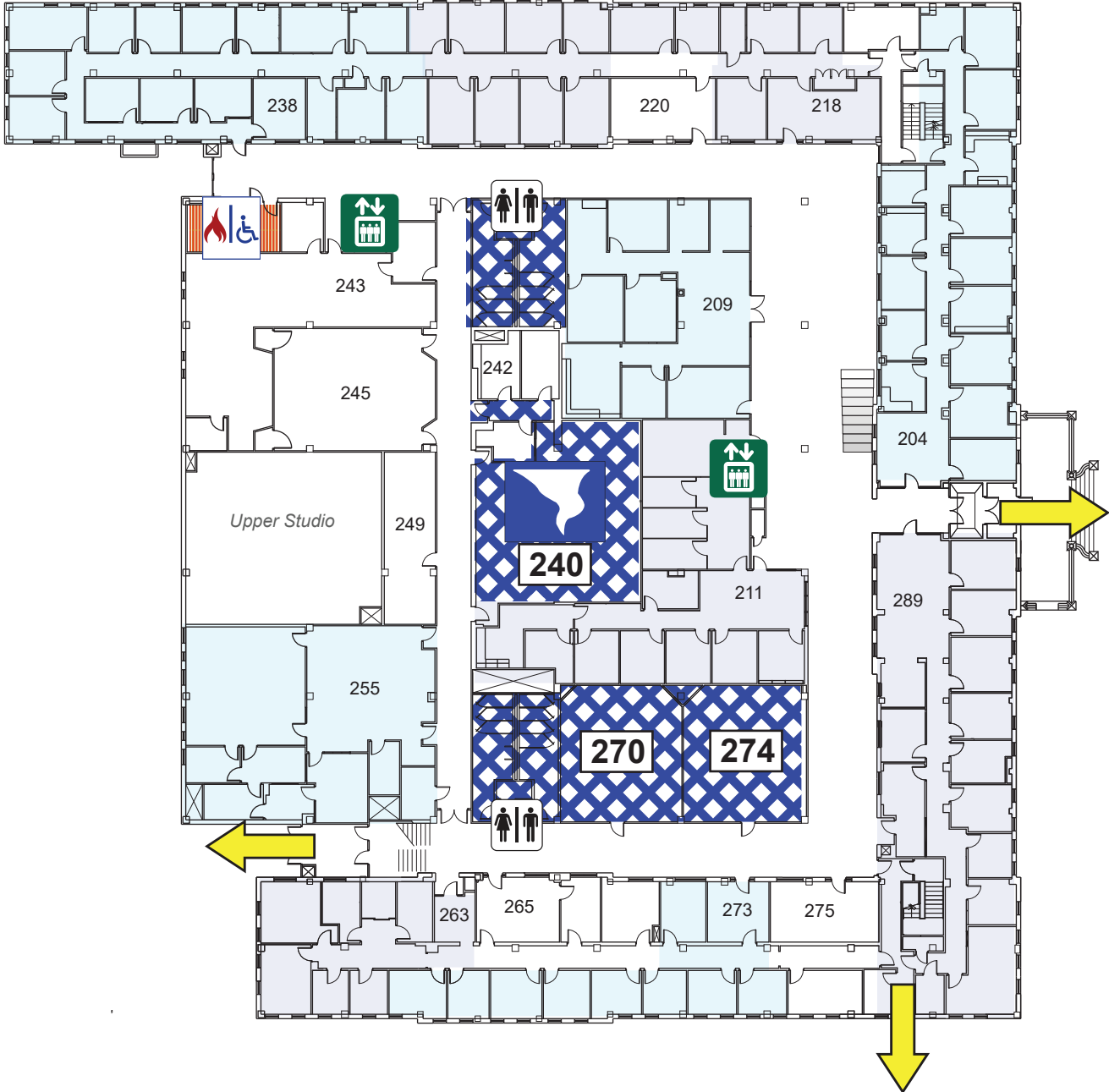
• ***Building Priorities:***

- **Any students with disabilities/students**
- **Area behind CMHT – C341 & Suite 342** (one way out)
- **Chilton 322** (Teaching Kitchen – Andrew Johnson will sweep)
- **Media Library 111** (No reception in shelter area)



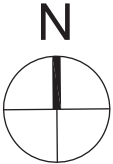
# CHILTON HALL

## SECOND FLOOR PLAN



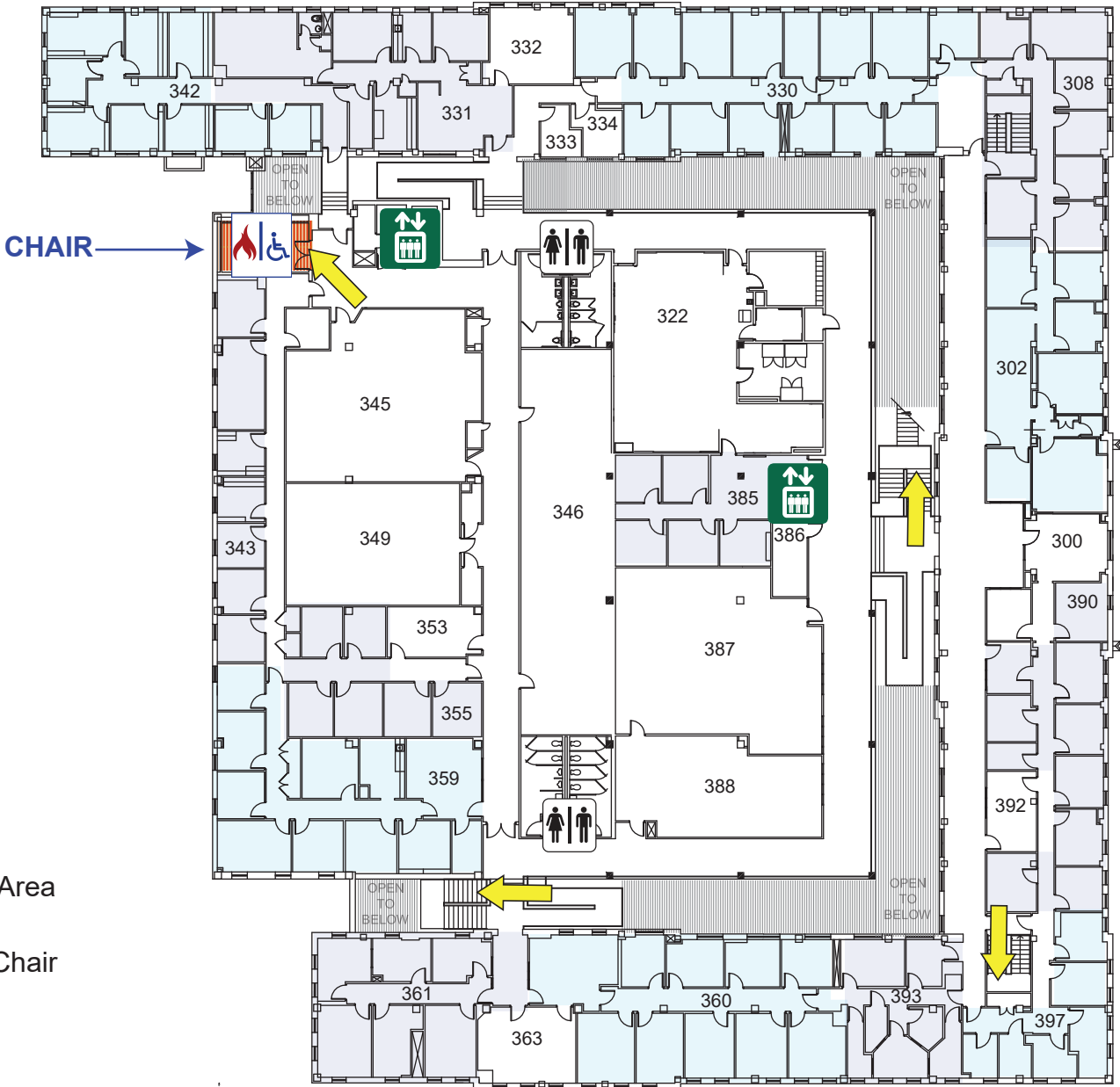
### LEGEND

-  Shelter Area
-  Exit
-  Fire Refuge Area
-  Restrooms
-  Elevator  
Do NOT use in fire








# CHILTON HALL

## THIRD FLOOR PLAN



### LEGEND

-  Exit
-  Fire Refuge Area
- CHAIR**  Evacuation Chair
-  Restrooms
-  Elevator  
Do NOT use in fire

