



Emergency Procedures

Delta Gamma

994 W. Highland St., Denton, TX 76201

Shelter

You may need to take shelter for **severe weather** (most common) or a **hazardous materials release**.

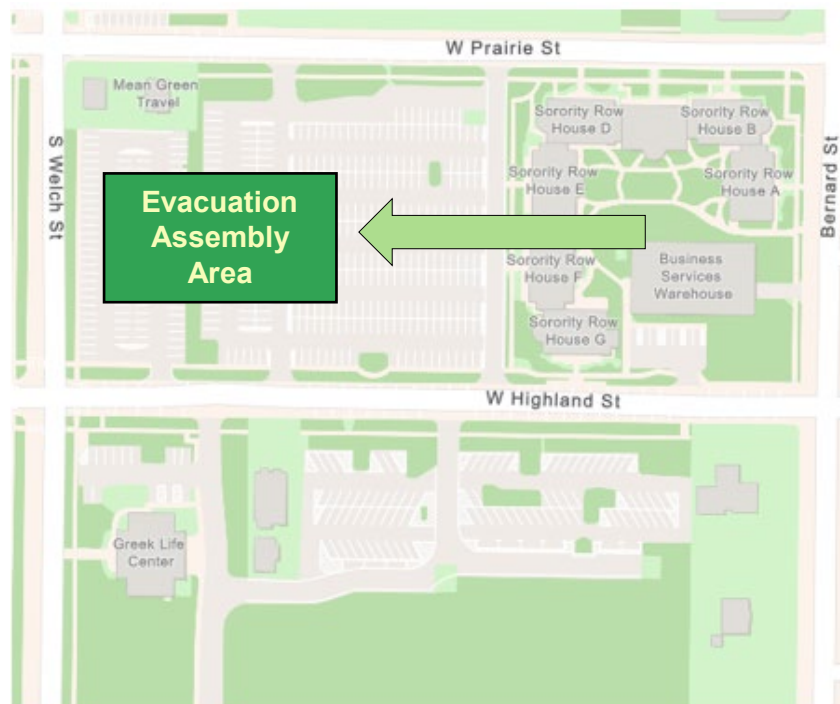
During an incident requiring individuals to take **shelter**, all building occupants should immediately move to the designated Tornado Shelter Areas in the building. If unable to safely move to the designated shelter area, seek shelter in a windowless interior room or hallway on the lowest floor of the building.

Residents and other building occupants should take shelter in the first floor hallways at the north and south ends of the building. Avoid standing near windows, exterior walls, and doors made of glass.

Evacuation

If you need to evacuate the building—for a fire, bomb threat, gas leak, or other event—all building occupants should immediately move to the nearest EXIT. Once outside, proceed to the designated Evacuation Assembly Area.

Persons with mobility impairments who are unable to safely exit the building should be moved to a designated **Area of Refuge** (also called a **Fire Refuge Area**) and await assistance from emergency responders. **Residents and other building occupants should immediately evacuate the building and proceed to Parking Lot 38 and 39 North of the Greek Life Center.**

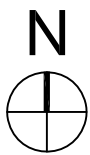
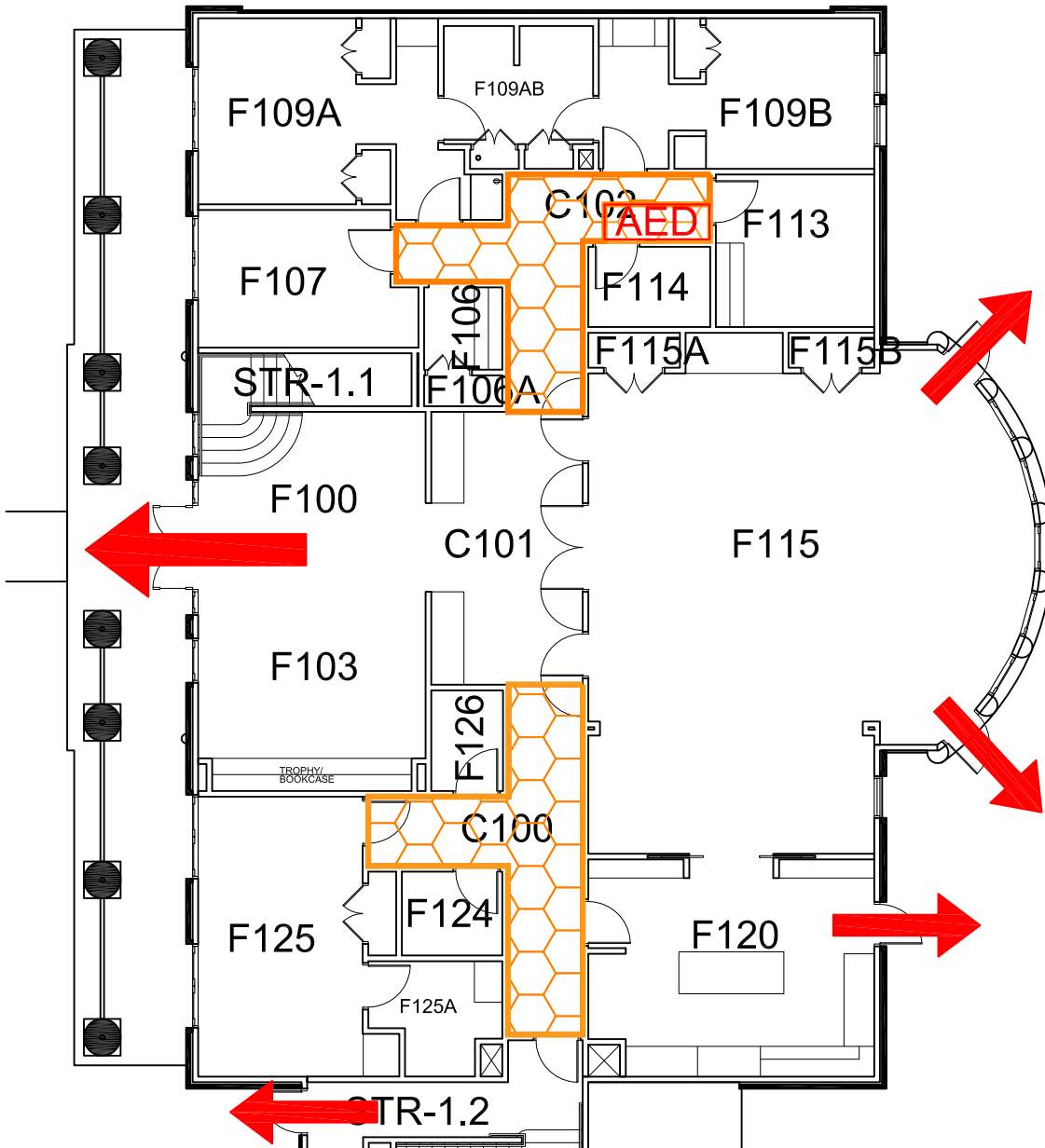


For more information on what to do in a specific emergency situation, refer to the UNT Emergency Guidelines on www.emergency.unt.edu or the Mean Green Ready app. **Call 911 in an emergency!**

SORORITY HOUSE F

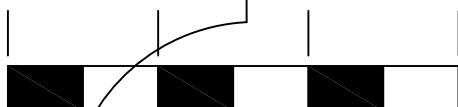
BUILDING # 0355
05-2019

Exterior Gross Area
4307



FIRST FLOOR PLAN

0' 10' 20' 30'



GRAPHIC SCALE

Safety Legend



Areas of Refuge



Tornado Shelter Areas



Exit/Evacuation Routes

In case of fire, do not use elevator



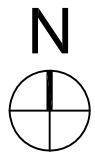
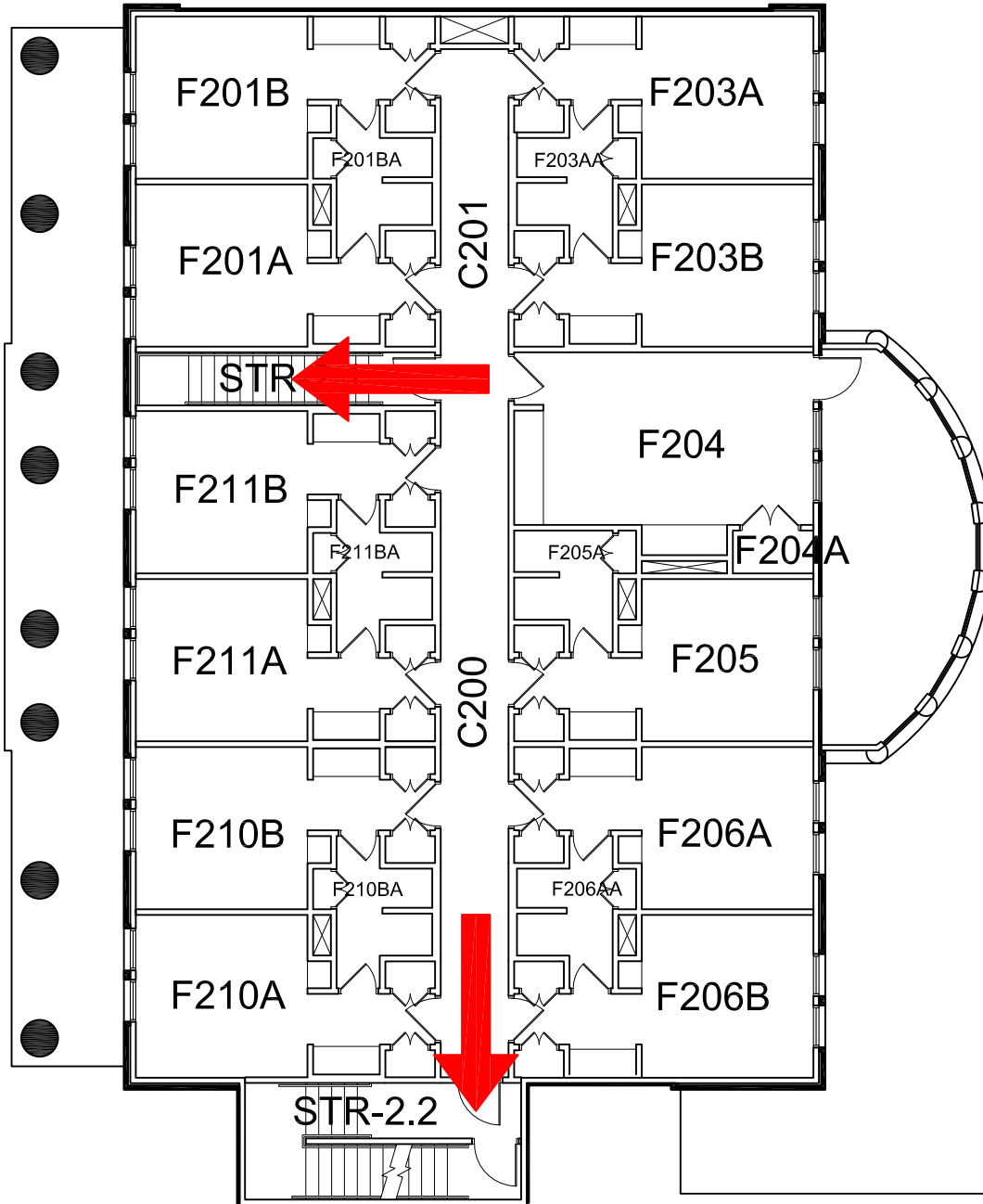
Automatic External Defibrillator

SORORITY HOUSE F

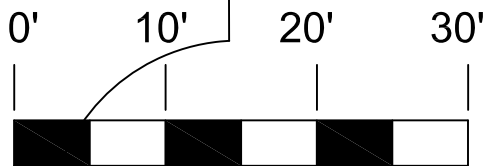
BUILDING # 0355

05-2019

Exterior Gross Area
4317



SECOND FLOOR PLAN



GRAPHIC SCALE

Safety Legend



Areas of Refuge



Tornado Shelter Areas



Exit/Evacuation Routes

In case of fire, do not use elevator



Automatic External Defibrillator