



# Emergency Procedures

## Facilities Complex

2204 W. Prairie St., Denton, TX 76201

### Shelter

You may need to take shelter for **severe weather** (most common) or a **hazardous materials release**.

During an incident requiring individuals to take **shelter**, all building occupants should immediately move to the designated Tornado Shelter Areas in the building. If unable to safely move to the designated shelter area, seek shelter in a windowless interior room or hallway on the lowest floor of the building.

**All building occupants should take shelter in either:**

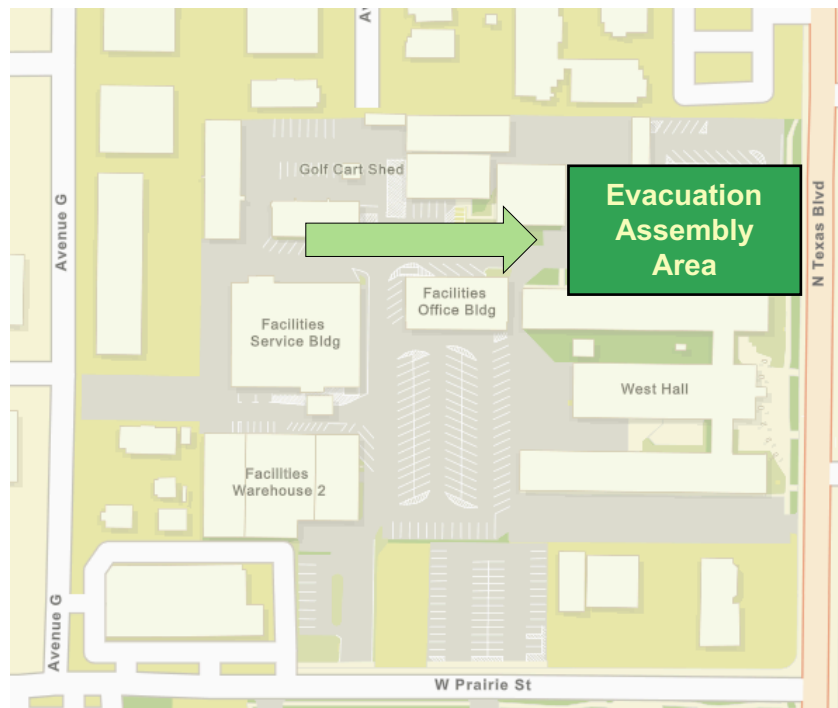
- **Facilities Office Building in the interior hallway between rooms 150 and 158**
- **Facilities Services Building in the interior hallways between rooms 150-160 and 128-130.**

**Avoid standing near windows, exterior walls, and doors made of glass.**

### Evacuation

If you need to evacuate the building—for a fire, bomb threat, gas leak, or other event—all building occupants should immediately move to the nearest EXIT. Once outside, proceed to the designated Evacuation Assembly Area. If unable to safely move to the designated assembly area, contact one or more members of your department or unit to let them know you are safe and your whereabouts.

Persons with mobility impairments who are unable to safely exit the building should be moved to a designated **Area of Refuge** (also called a **Fire Refuge Area**) and await assistance from emergency responders. **All building occupants should immediately evacuate the building and proceed to Parking Lot 17 north of West Hall.**

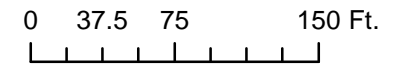


For more information on what to do in a specific emergency situation, refer to the UNT Emergency Guidelines on [www.emergency.unt.edu](http://www.emergency.unt.edu) or the Mean Green Ready app. **Call 911 in an emergency!**



### Legend

- Shelter
- Evacuation Assembly Area

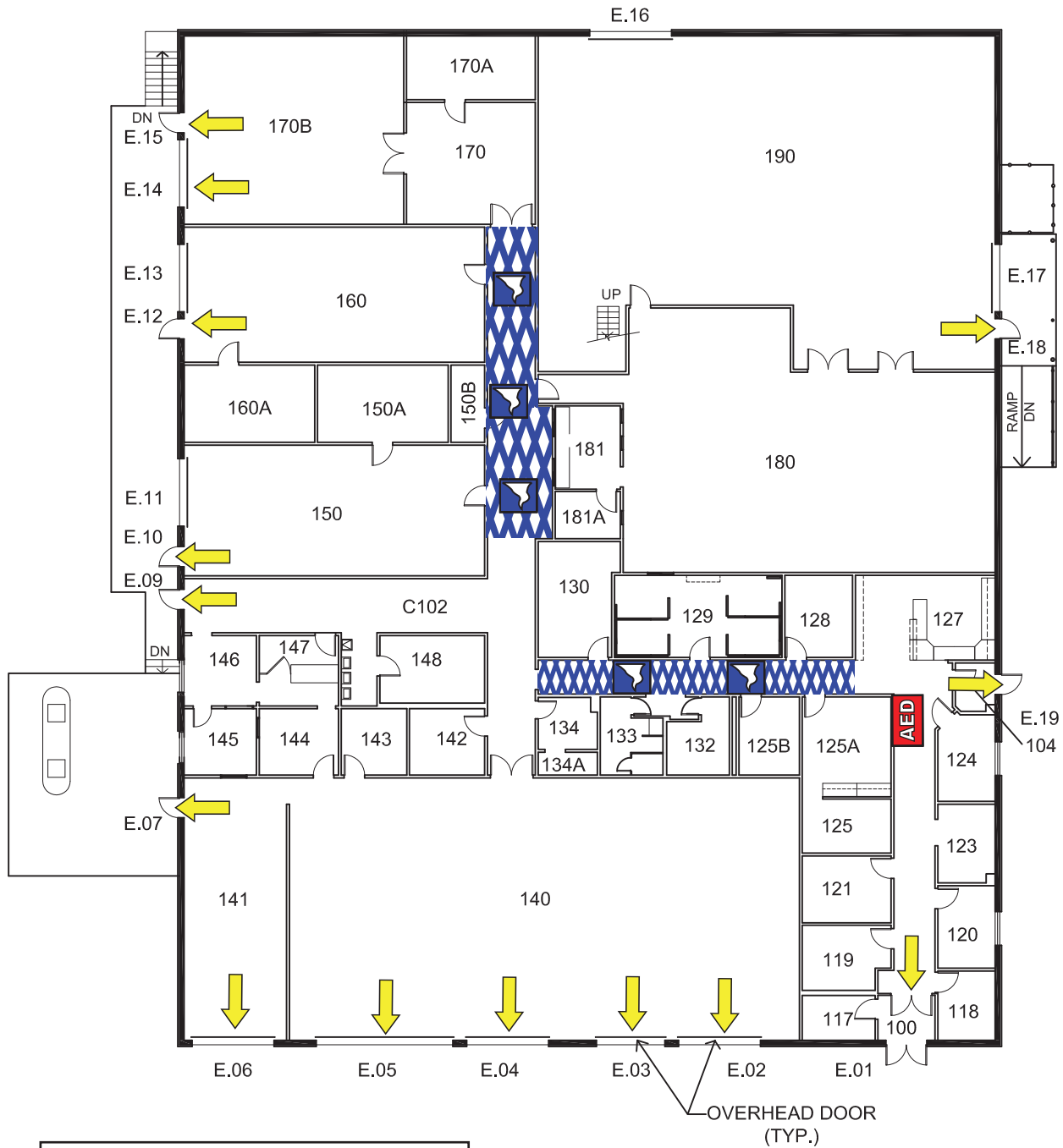


PRINTABLE UP TO 18 x 24      DATE: 2021/02/10      AUTHOR: smt0238




Data is compiled from various sources. Accuracy or precision is not guaranteed, it may not reflect all existing conditions. For planning purposes only, not for design or construction.

FACILITIES GIS  
1155 UNION CIRCLE #311040, DENTON, TX 76203-5017  
940.369.7532 / 7123 | Facilities.GIS@unt.edu

# FACILITIES SERVICE BLDG FIRST FLOOR PLAN

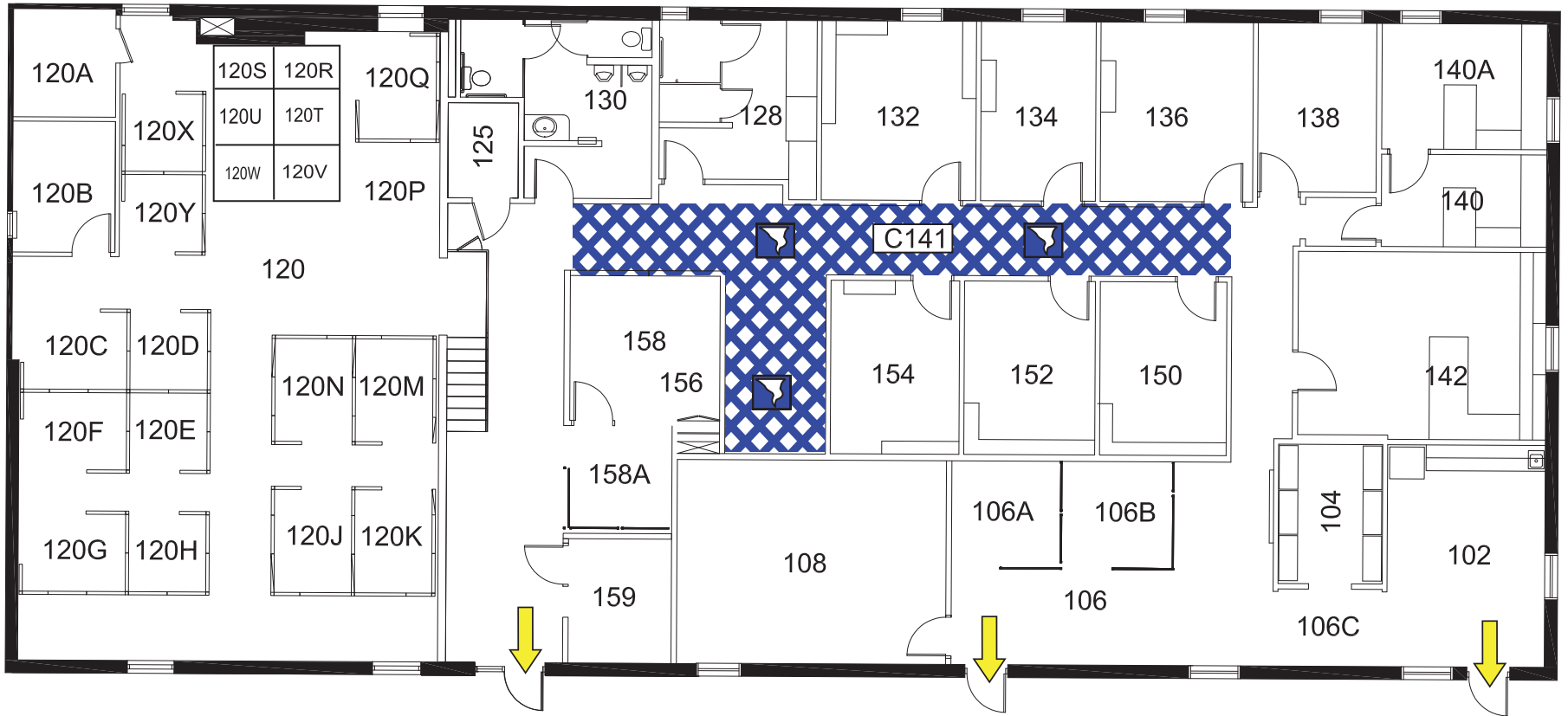


**LEGEND**

-  Shelter Area
-  Automated External Defibrillator
-  Exit



# FACILITIES OFFICE BLDG



N



## FIRST FLOOR PLAN

### LEGEND



Shelter Area



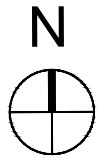
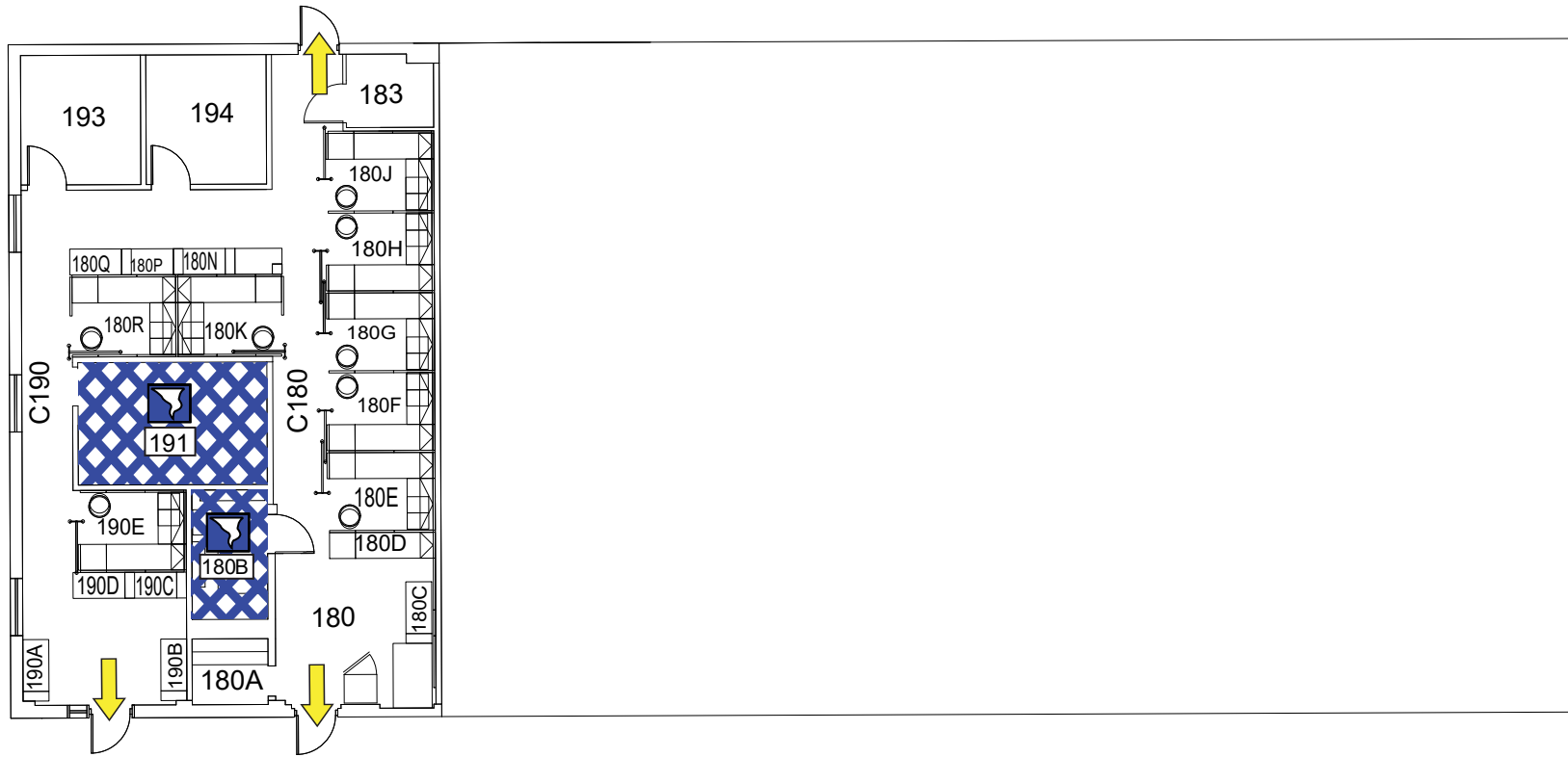
Exit

0' 10' 20' 30'

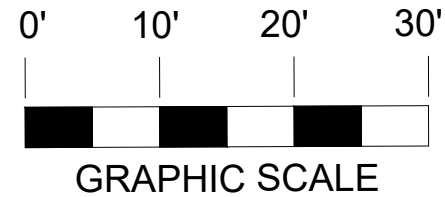


GRAPHIC SCALE

# FACILITIES OFFICE BLDG



LOWER FLOOR PLAN



## LEGEND

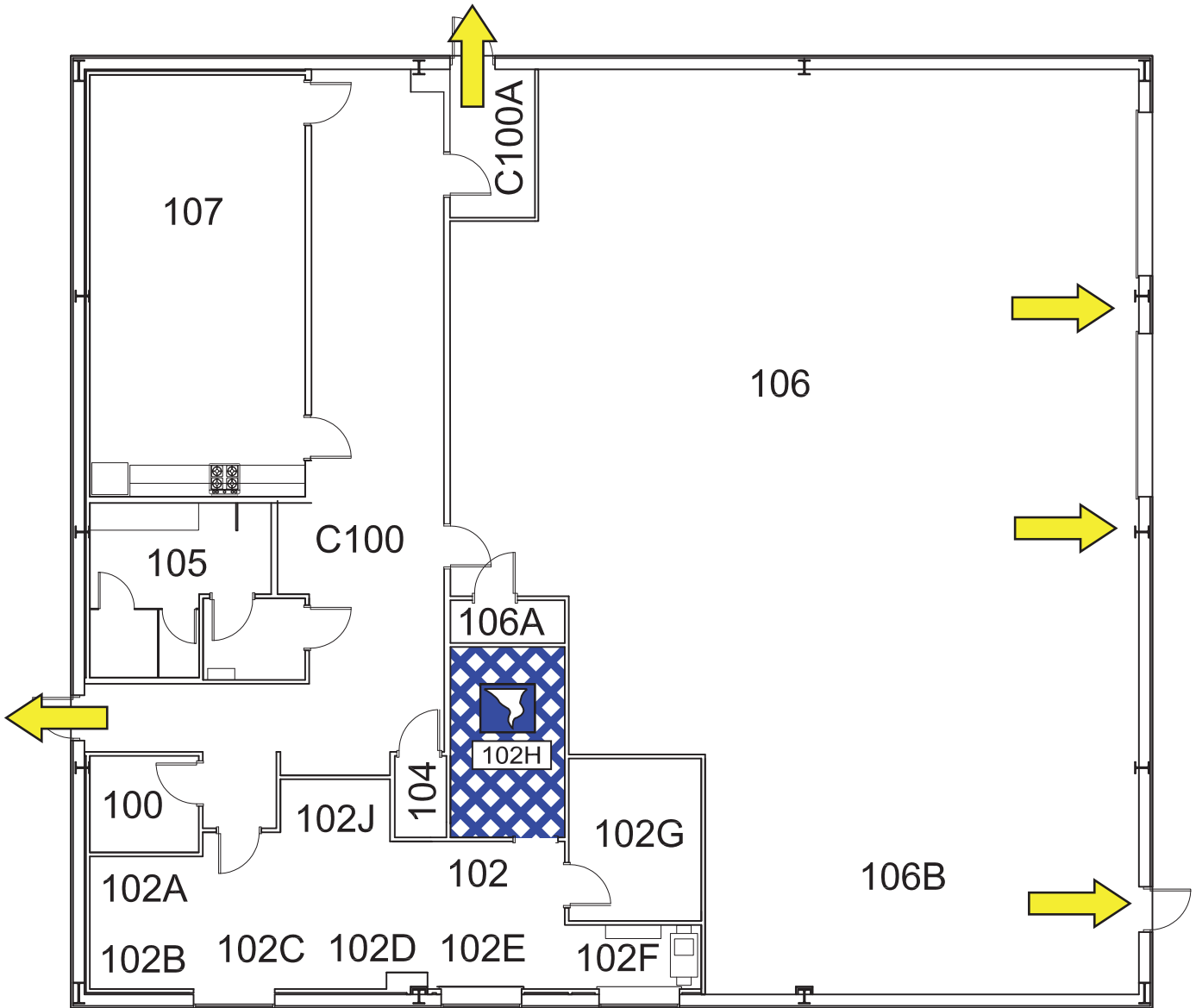


Shelter Area



Exit

# FACILITIES GROUNDS BLDG



## FIRST FLOOR PLAN



GRAPHIC SCALE

### LEGEND

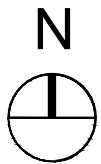
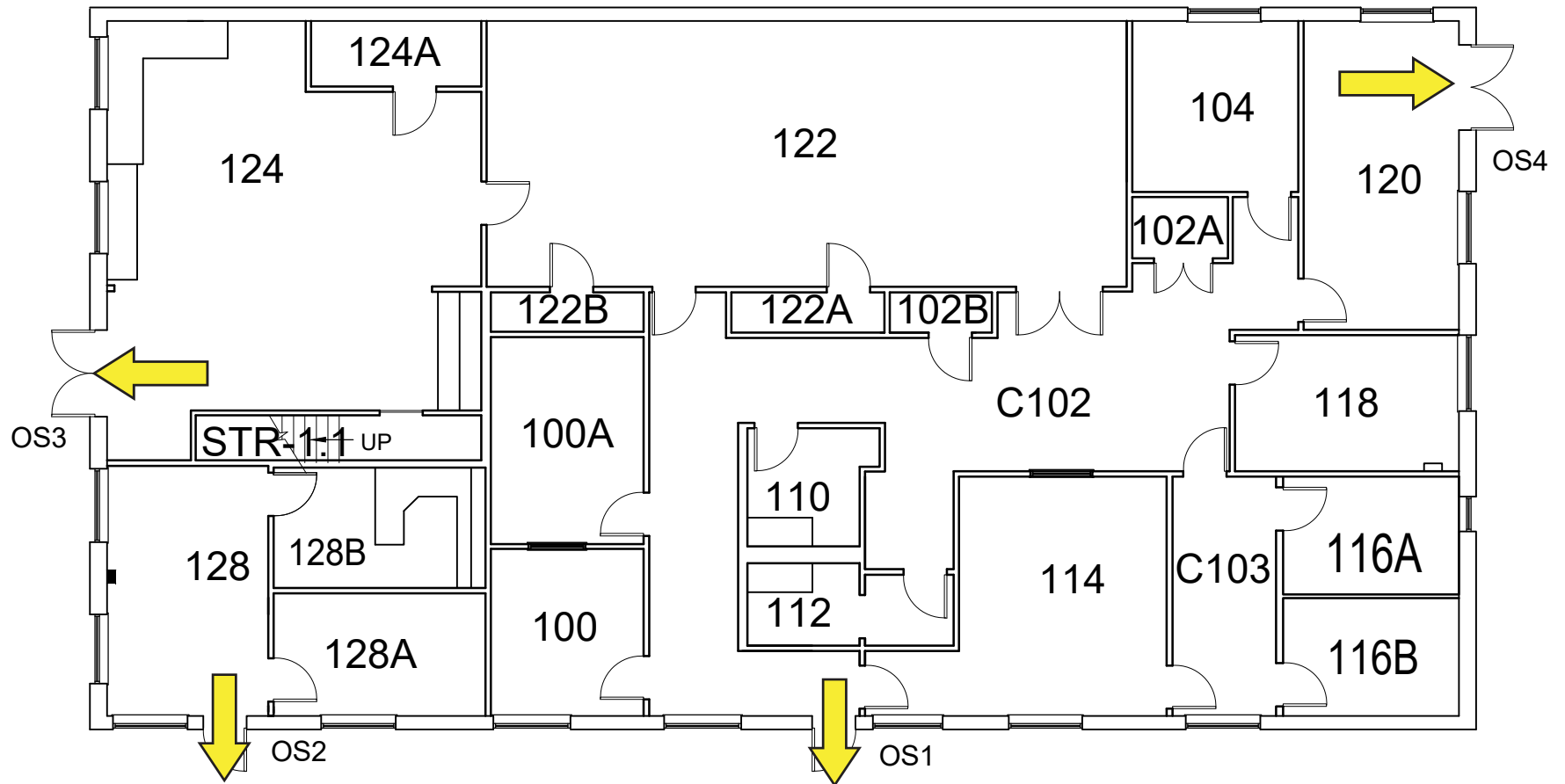


Shelter Area



Exit

# FACILITIES CUSTODIAL SERVICES



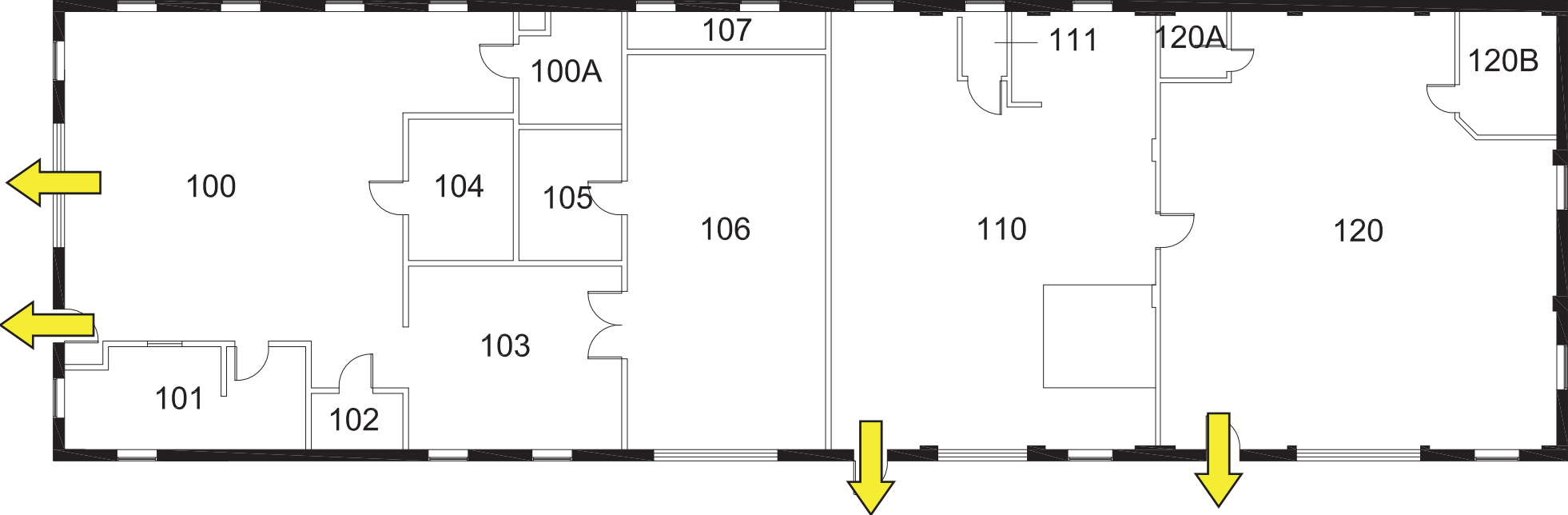
**FIRST FLOOR PLAN**



**LEGEND**


➡ Exit

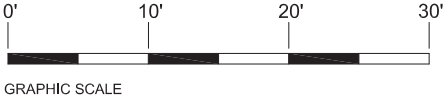
# FACILITIES PAINT SHOP



N FIRST FLOOR PLAN

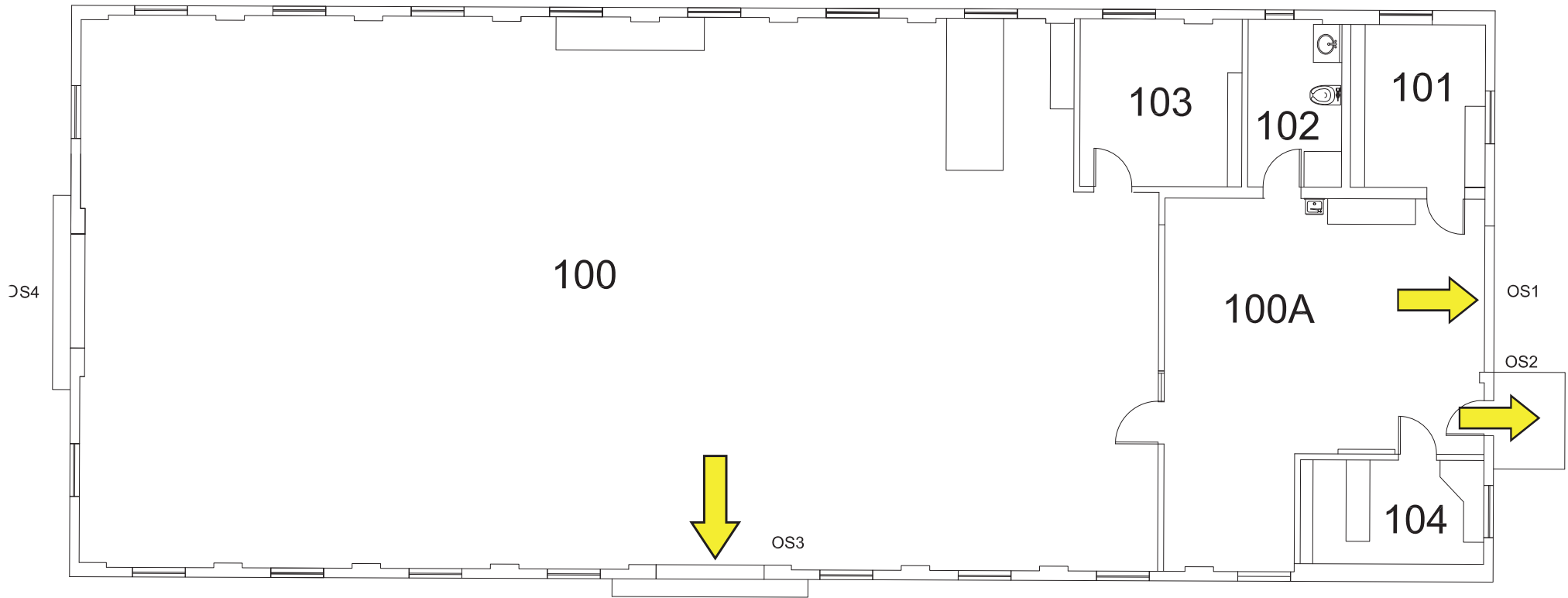
**LEGEND**

 Exit





# FACILITIES CARPENTER SHOP



N



FIRST FLOOR PLAN

**LEGEND**

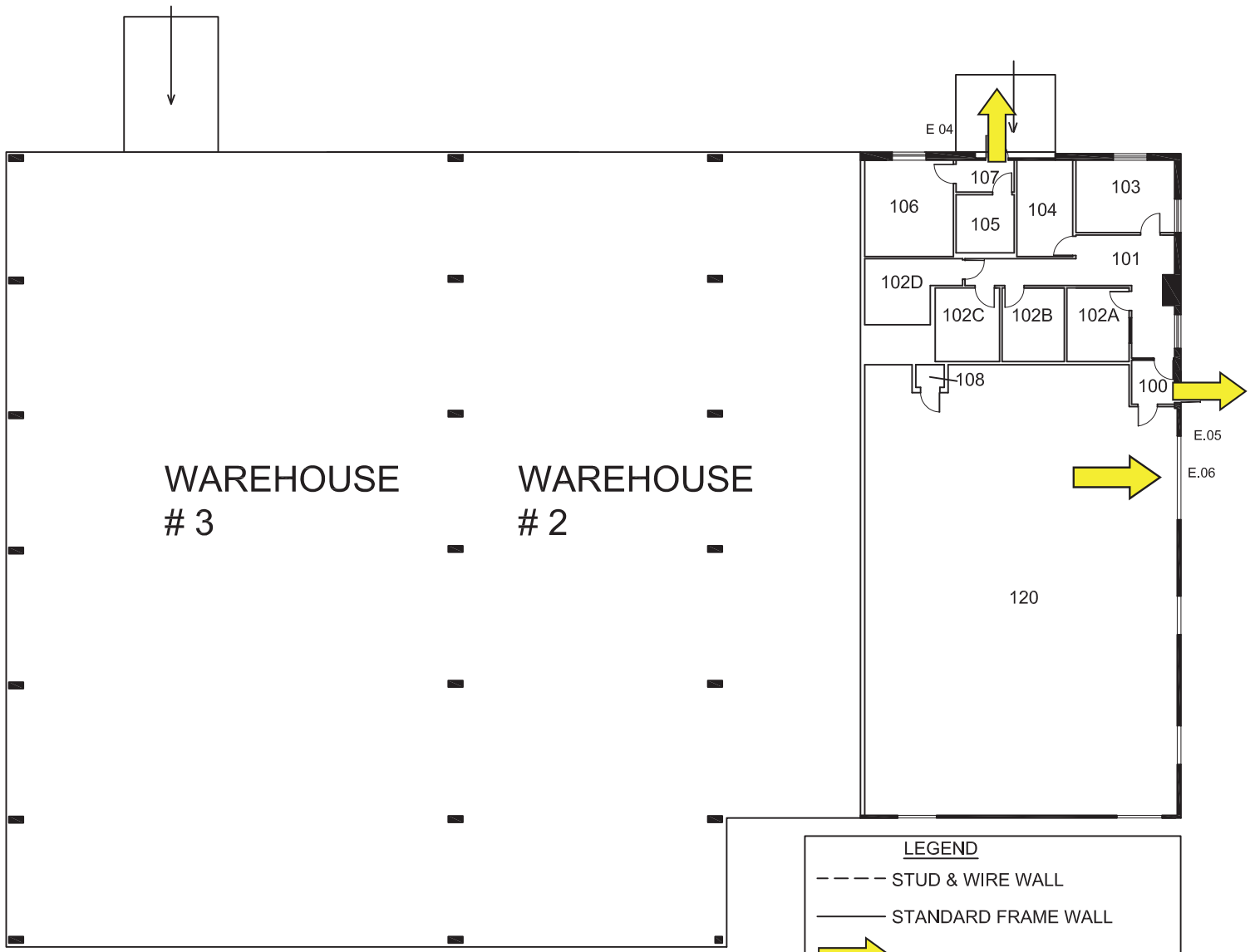


Exit



GRAPHIC SCALE

# FACILITIES WAREHOUSE # 1



WAREHOUSE  
# 3

WAREHOUSE  
# 2

120

## LEGEND

- STUD & WIRE WALL
- STANDARD FRAME WALL

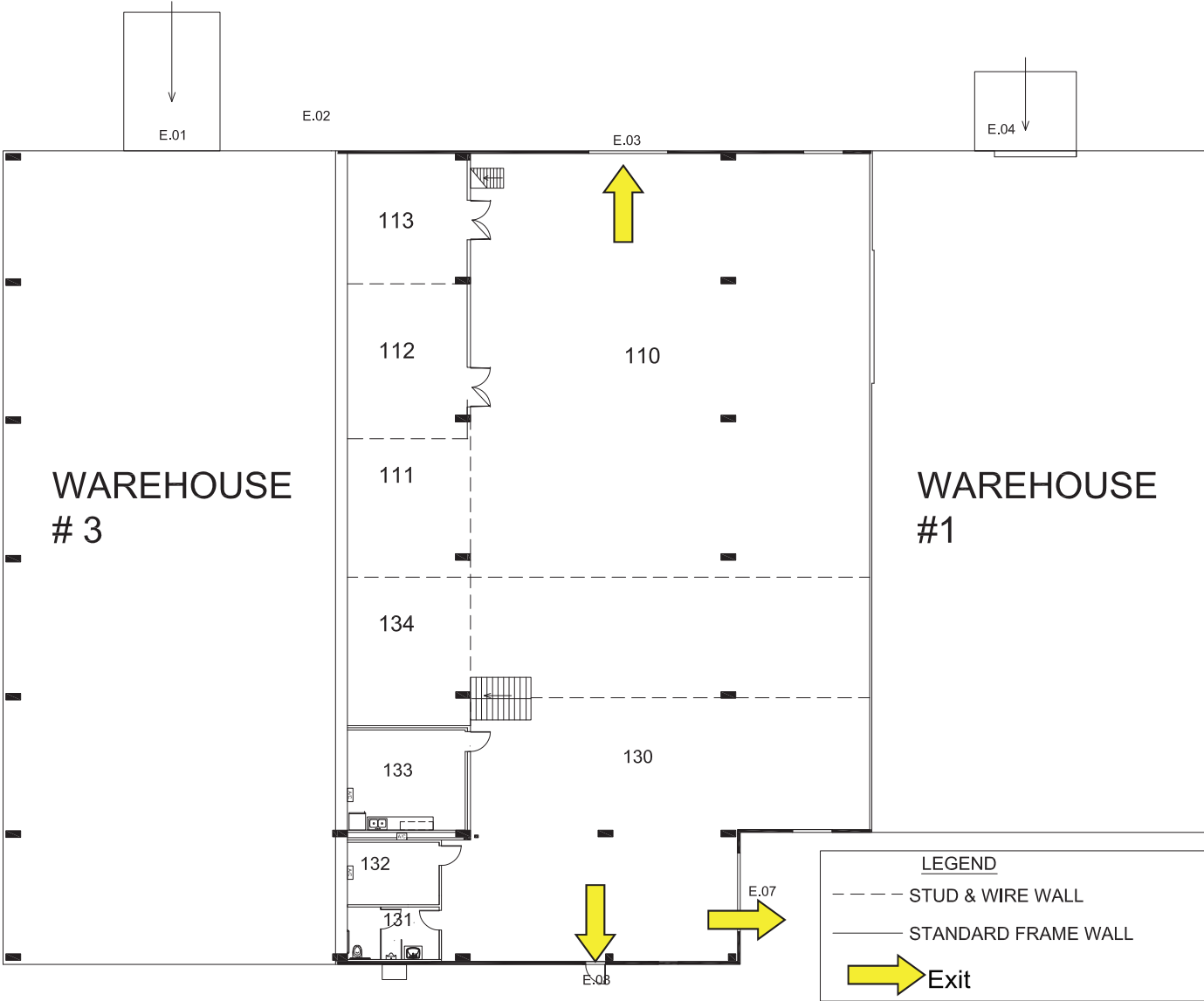
➔ Exit



## FIRST FLOOR PLAN



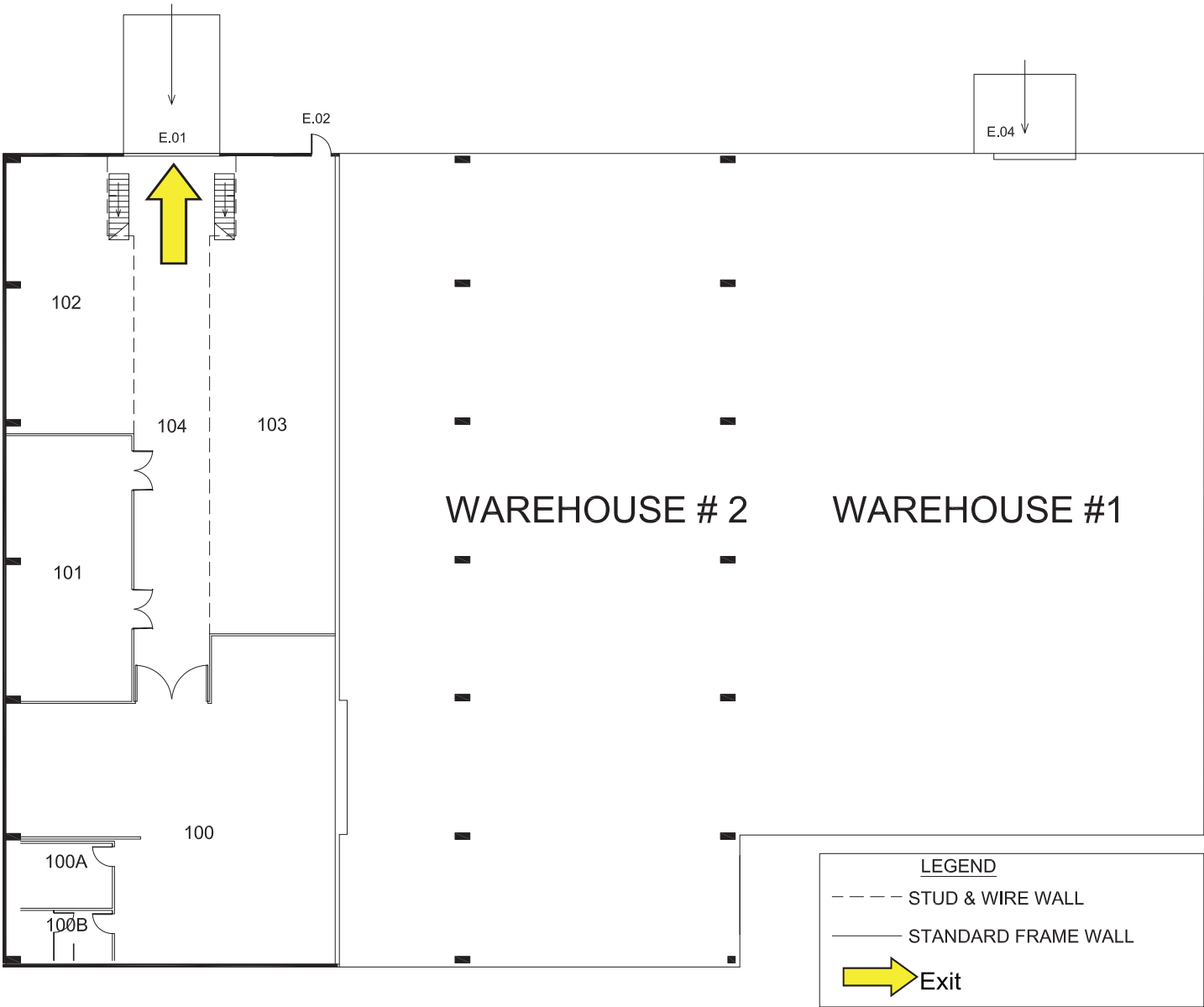
# FACILITIES WAREHOUSE # 2



FIRST FLOOR PLAN



# FACILITIES WAREHOUSE # 3



FIRST FLOOR PLAN

GRAPHIC SCALE