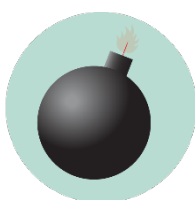


GENERAL ACADEMIC BUILDING EMERGENCY GUIDELINES

Call or text 911 in life threatening emergencies



FIRE



BOMB THREAT



**GAS
LEAK**



HAZMAT



**SEVERE
WEATHER**



HAZMAT

Evacuation

PROMPTS: Fire alarm, direction from the UNT Police or City of Denton Fire Department, an Eagle Alert, a visibly life-threatening situation

- Gather those around you and quickly leave through the nearest exit.
- Ask those around you with limited mobility if they need help and provide assistance, as able.
- If you take notice of someone unable to evacuate, note their location and tell first responders as soon as possible.
- Those with access and functional needs should immediately go to the nearest fire refuge area and call 911.
- Move at least 200 feet away from the building and stay off fire lanes.
- Comply with directions from first responders.

Shelter

PROMPTS: Eagle Alert, Outdoor Warning Sirens

- Go indoors immediately.
- Seek shelter on the lowest level of the building, away from windows and exterior walls.
- For tornadoes: Encourage others to shield their head and neck with arms and putting material such as furniture and blankets around themselves.
- If the event is HAZMAT related, completely turn off or seal off all external air sources including windows, doors, and air vents.
- Stay in shelter until an Eagle Alert is sent telling you it's safe to leave.

Medical Emergency

- Call 911 (or have someone call 911 for you).
- Send others to get an AED and to meet first responders at the door.
- Ask the individual if you have their permission to assist them.
 - If **YES**, provide first aid to the extent that you feel able.
 - If **NO**, move away from the individual and wait for first responders.
 - If **unconscious**, you have implied consent to provide assistance, as long as you are not negligent.
- Assist paramedics as needed when they arrive.
- Gather info and report the incident to Risk Management Services.

Run. Hide. Fight.

PROMPTS: Eagle Alert; successive, loud shot noises; groups of individuals running and screaming

- **RUN** and escape the active threat if possible.
- **HIDE** from the active threat if escape is not possible.
- **FIGHT** the attacker as a last resort and commit to your actions.



**MEDICAL
EMERGENCY**



**ACTIVE
THREAT**

CAMPUS EMERGENCY CONTACTS

<p>Any life-threatening emergency Active threat Acts or threats of violence Bomb threat Fire Hostage situation Life-threatening hazardous materials release Medical emergencies Natural gas leak Suicidal person Violent civil disturbance or demonstration Violent/threatening/hostile individual</p>	<p><i>Call or text 911 in life-threatening emergencies</i> 911</p>
<p>Any non-emergency concerns Civil disturbance or demonstration Disruptive person Elevator failure Suspicious person</p>	<p><i>UNT Police</i> 940-565-3000</p>
<p>Maintenance-related issues Power outage Water leak or flooding Property damage</p>	<p><i>UNT Facilities</i> 940-565-2700</p>
<p>Minor hazardous materials release</p>	<p><i>UNT Risk Management</i> 940-565-2109</p>

If you are unsure if a situation is or is not an emergency, always call 911.

BUILDING EMERGENCY CONTACTS

Name	Position	Daytime Contact Information	Office Location
Steven Cobb	CLASS	940-565-2348	GAB 210E
Blake Roark	CLASS	940-565-4105	GAB 210F
Debra Griffin	CLASS	940-565-2151	GAB 220
Jana Watkins	Mathematics	940-565-4047	GAB 435E
Joanie Smith	International Studies	940-565-2323	GAB 102
Lorenzo Robles	CAS-IT	940-565-4498	GAB 313
Amy Fuller	Communication Studies	940-565-4747	GAB 309
Ravi Vadapalli	Research and Innovation	940-369-6046	GAB 535
Michael O'Rourke	Data Center	817-721-6446	Off-Site

GENERAL ACADEMIC BUILDING EMERGENCY LOCATIONS AND SUPPLIES



Shelter Areas

- 1st floor in the windowless first floor hallways, rooms 104, 105, 114, and in the restrooms on the 1st and 2nd floor.

Evacuation Assembly Area

Evacuation Assembly Area

- All building occupants should immediately evacuate the building and proceed to the assembly area east of the building, *unless directed to go elsewhere by first responders or an Eagle Alert.*



Medical Emergency Related Equipment

- **First Aid Kits:** located in rooms GAB 210, 220, 309, 435.
- **AEDs:** located on the 2ND floor across from room 210E.

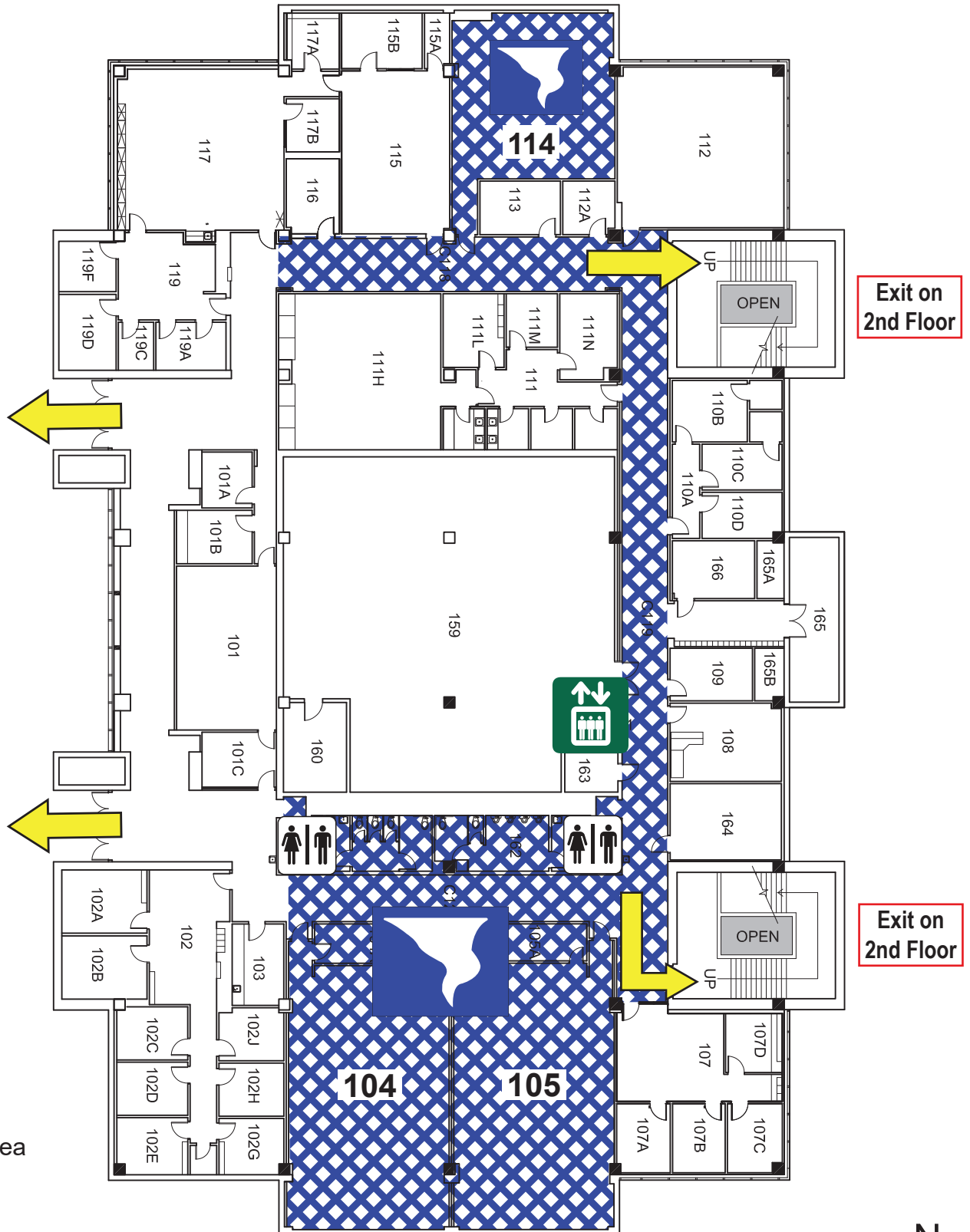


Fire Refuge Areas: A temporary haven from the effects of a fire or other emergency that would normally require evacuation.



- Located on 3rd, 4th, and 5th floor, on all four corners of the floor stairways.

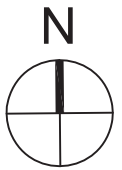
GENERAL ACADEMIC BUILDING

FIRST FLOOR PLAN



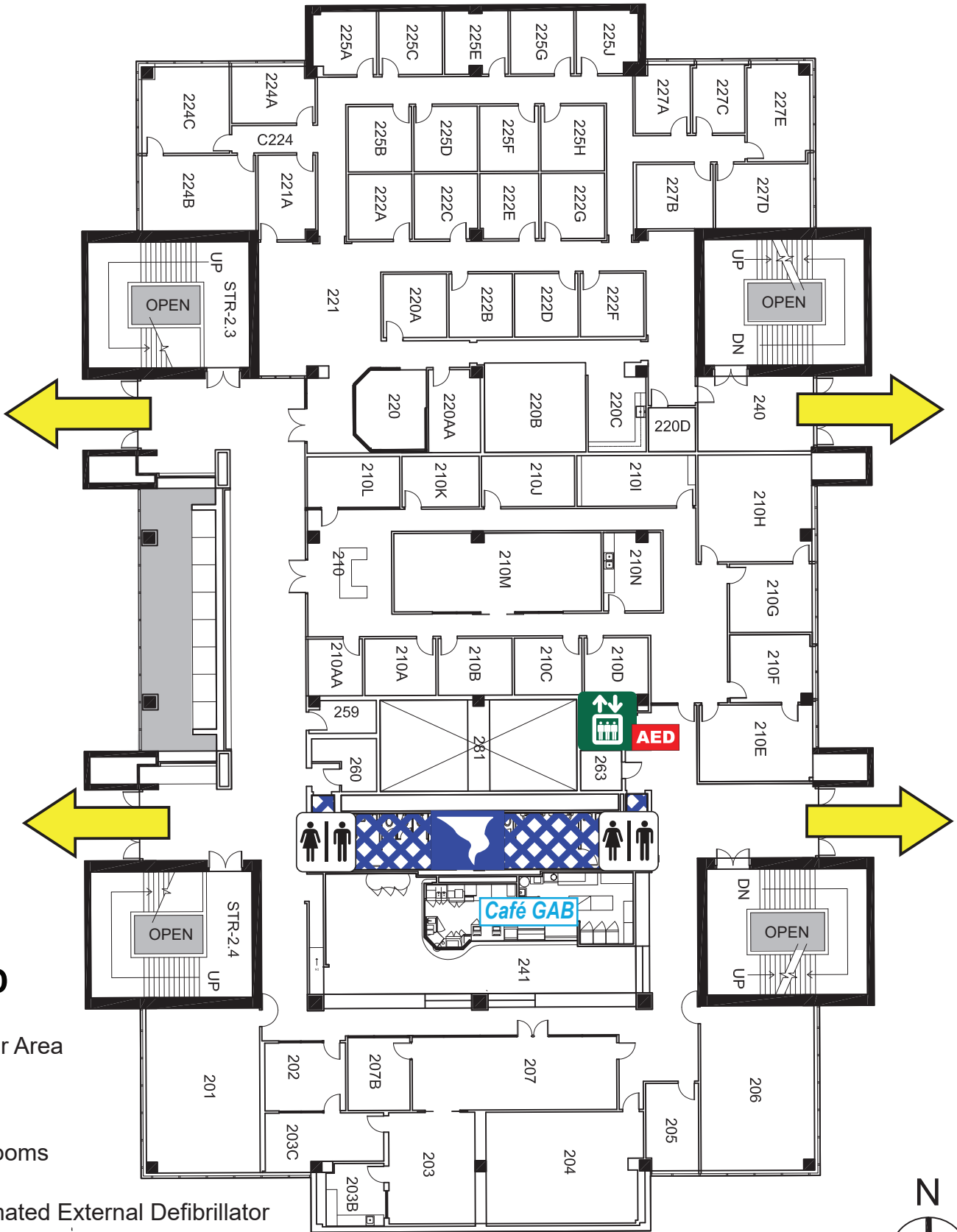
LEGEND

-  Shelter Area
-  Exit
-  Restrooms
-  Elevators








GENERAL ACADEMIC BUILDING

SECOND FLOOR PLAN



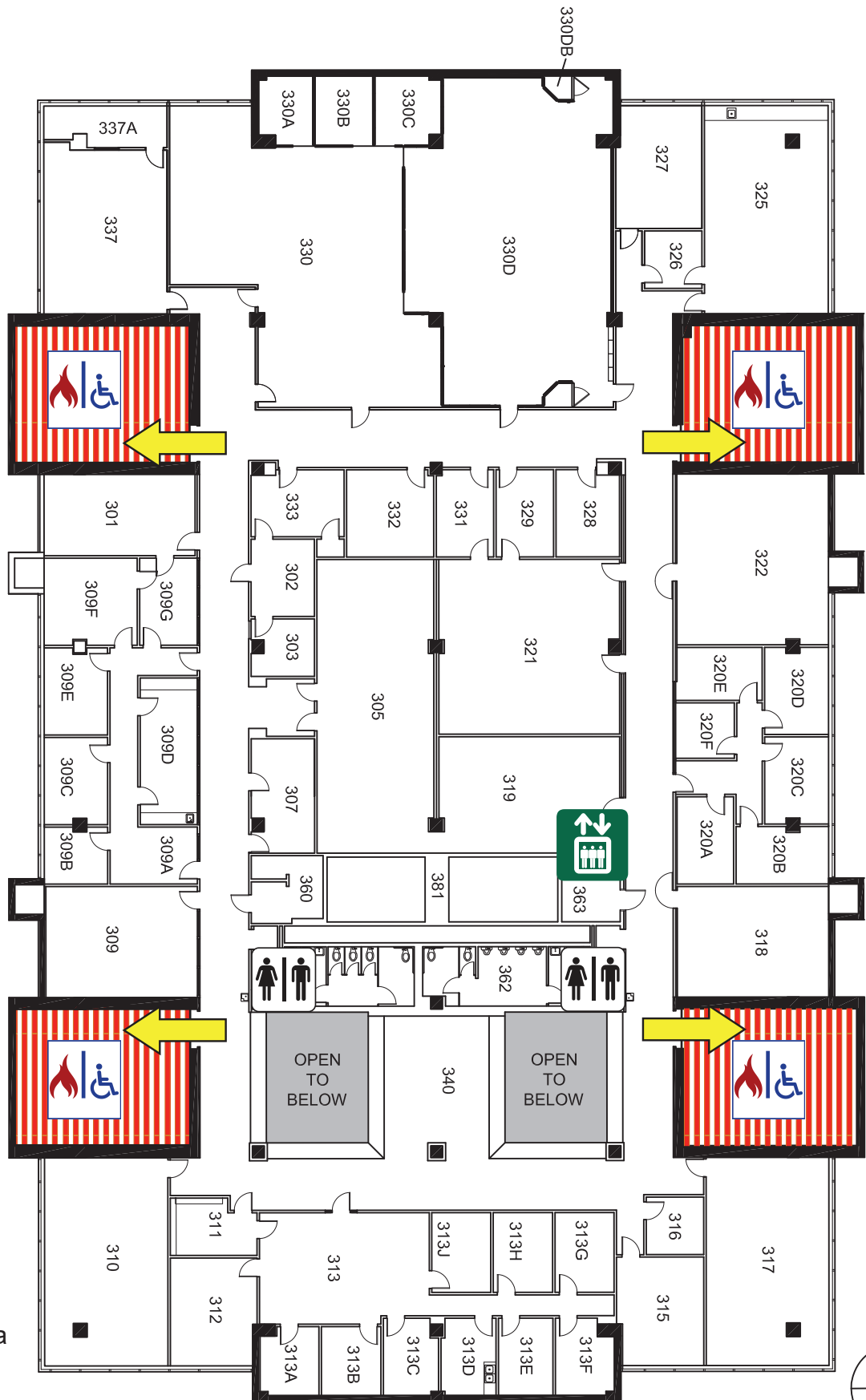
LEGEND

-  Shelter Area
-  Exit
-  Restrooms
-  AED Automated External Defibrillator
-  Elevators








GENERAL ACADEMIC BUILDING

THIRD FLOOR PLAN



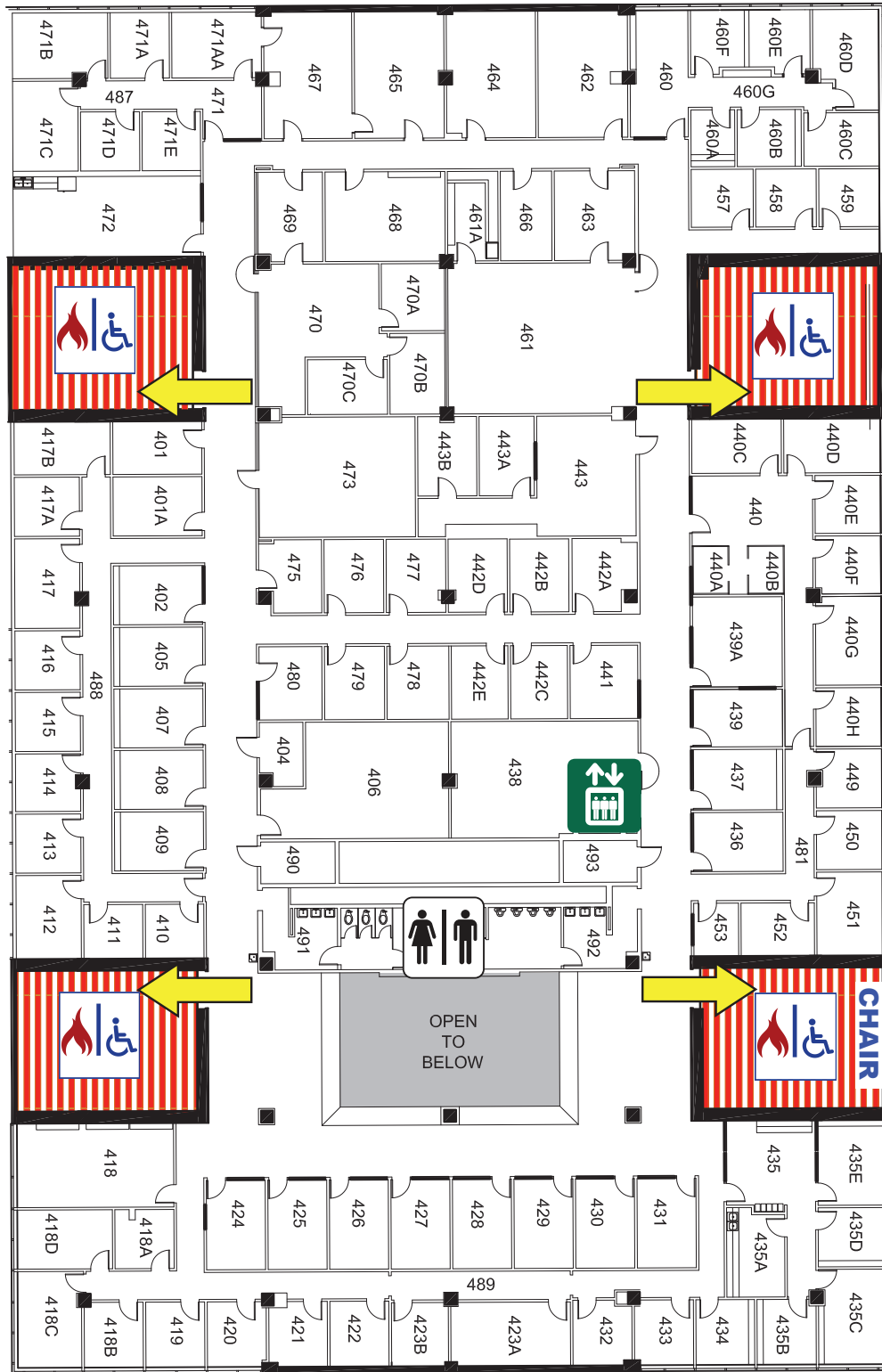
LEGEND

-  Shelter Area
-  Exit
-  Restrooms
-  Fire Refuge Area
-  Elevators



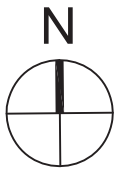
GENERAL ACADEMIC BUILDING

FOURTH FLOOR PLAN



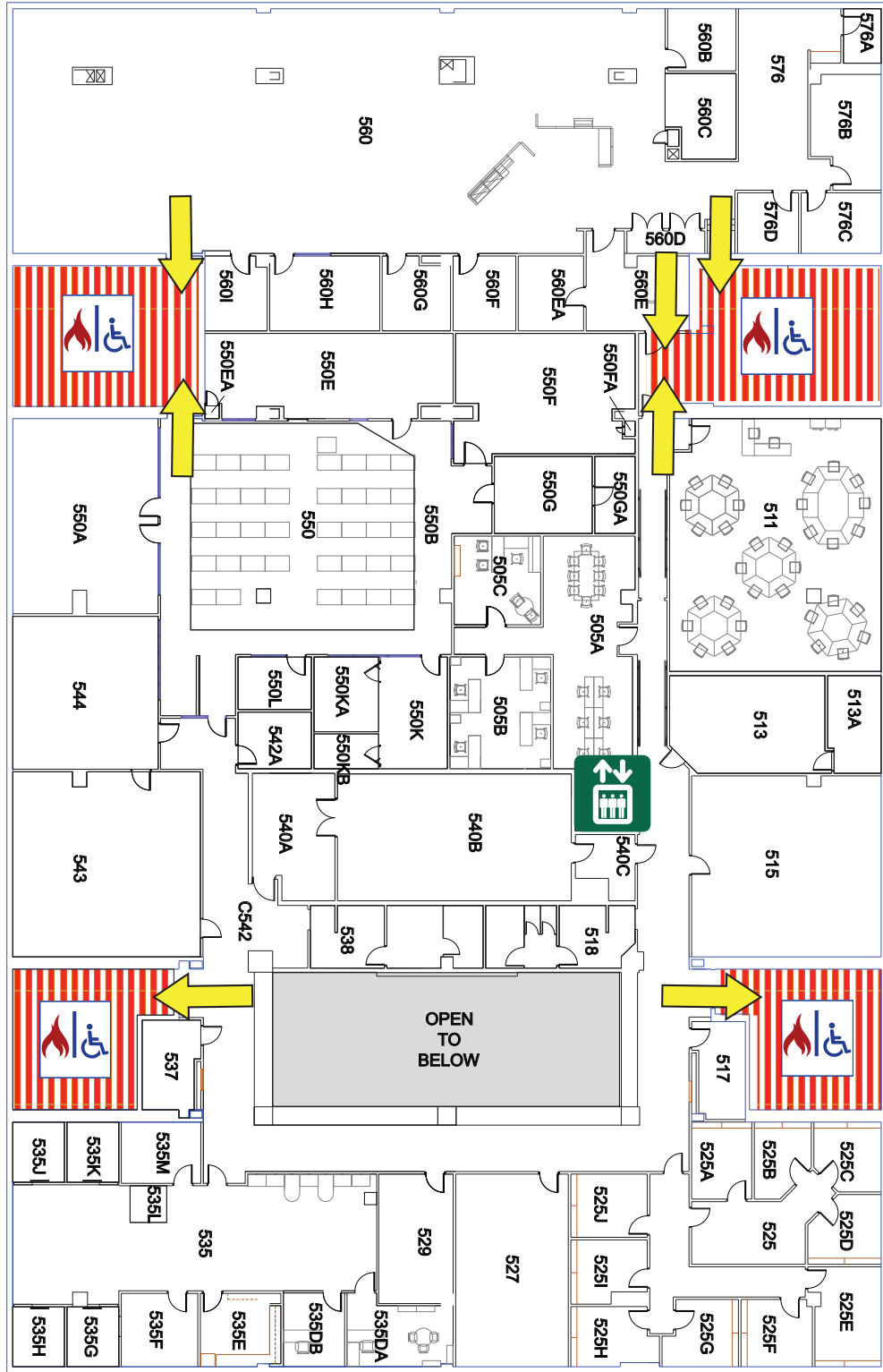
LEGEND

-  Exit
-  Restrooms
-  Elevators
-  Fire Refuge Areas
-  CHAIR Evacuation Chair



GENERAL ACADEMIC BUILDING

FIFTH FLOOR PLAN



LEGEND

-  Exit
-  Restrooms
-  Elevators
-  Fire Refuge Areas

