



Emergency Procedures for Honors Hall

1716 Eagle Dr., Denton, TX 76201

Shelter

You may need to take shelter for **severe weather** (most common) or a **hazardous materials release**.

During an incident requiring individuals to take **shelter**, all building occupants should immediately move to the designated Tornado Shelter Areas in the building. If unable to safely move to the designated shelter area, seek shelter in a windowless interior room or hallway on the lowest floor of the building.

Residents and other building occupants should take shelter in the interior hallways on the lowest level of their respective wing. Avoid standing near windows, exterior walls, and doors made of glass.

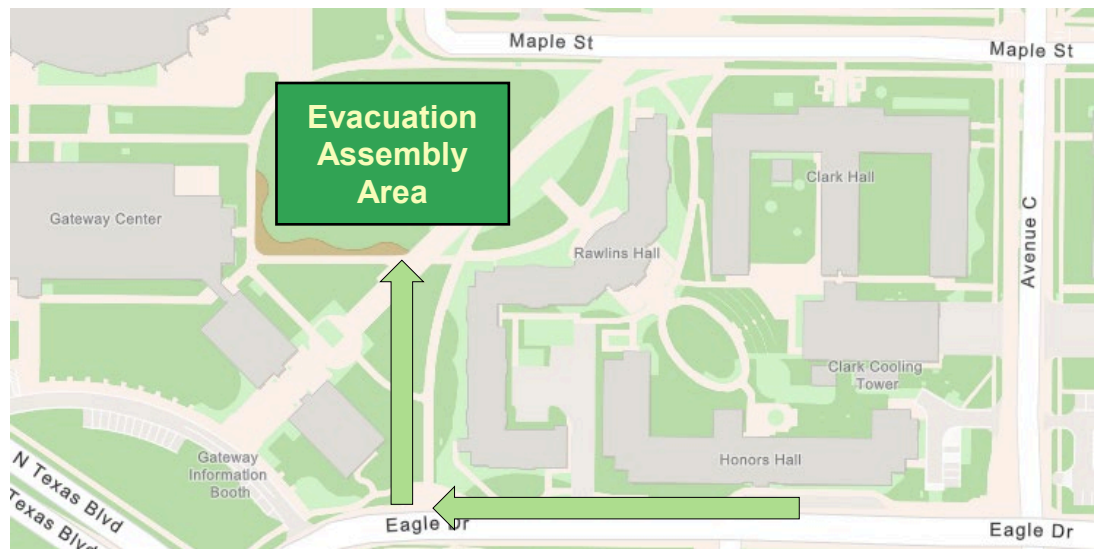
Evacuation

If you need to evacuate the building—for a fire, bomb threat, gas leak, or other event—all building occupants should immediately move to the nearest EXIT. Once outside, proceed to the designated Evacuation Assembly Area. If unable to safely move to the designated Evacuation Assembly Area, contact your RA to let them know you are safe and inform them of your whereabouts.

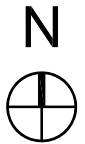
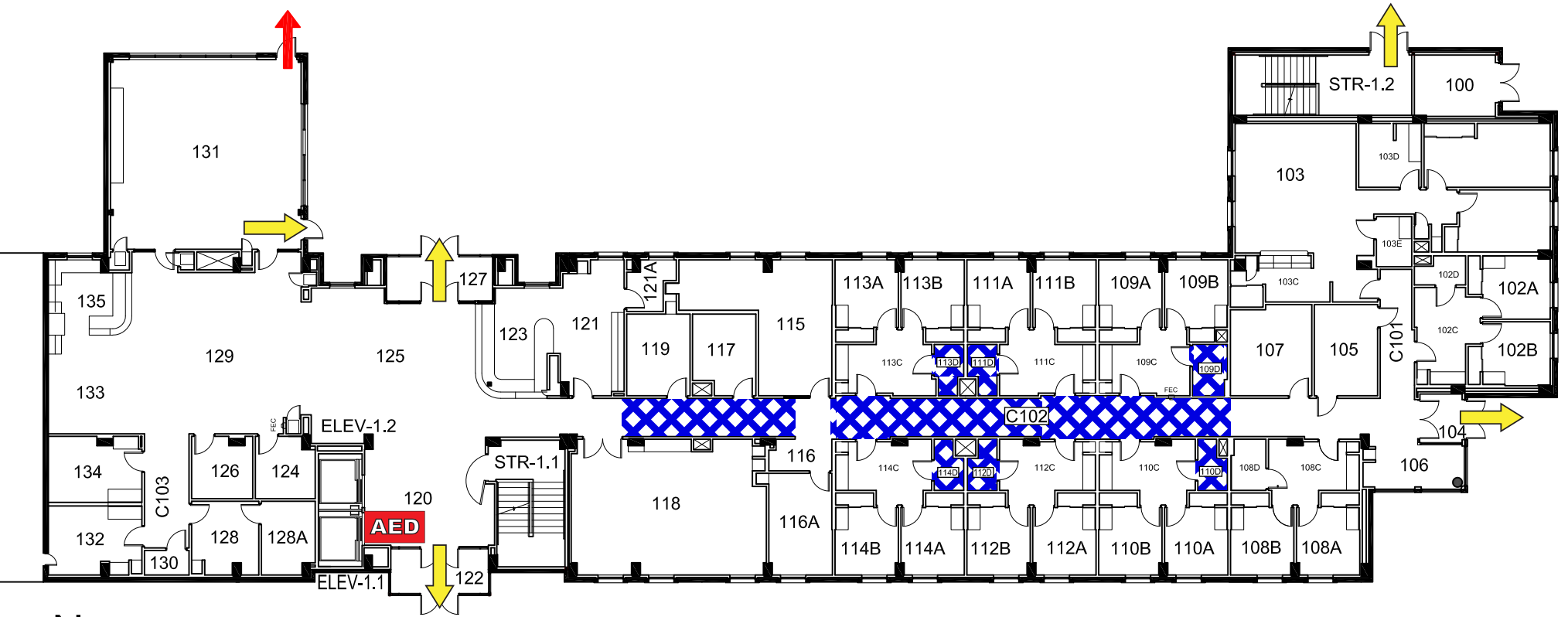
Persons with mobility impairments who are unable to safely exit the building should be moved to a designated **Area of Refuge** (also called a **Fire Refuge Area**) and await assistance from emergency responders.

Residents and other building occupants should congregate to the open area east of Gateway Center Building.

For more information on what to do in a specific emergency situation, refer to the UNT Emergency Guidelines on www.emergency.unt.edu or the Mean Green Ready app. **Call 911 in an emergency!**


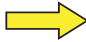



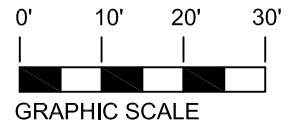
HONORS HALL



FIRST FLOOR PLAN

LEGEND

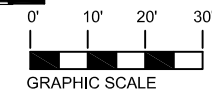
-  Shelter Area
-  Exit
-  Automated External Defibrillator



HONORS HALL



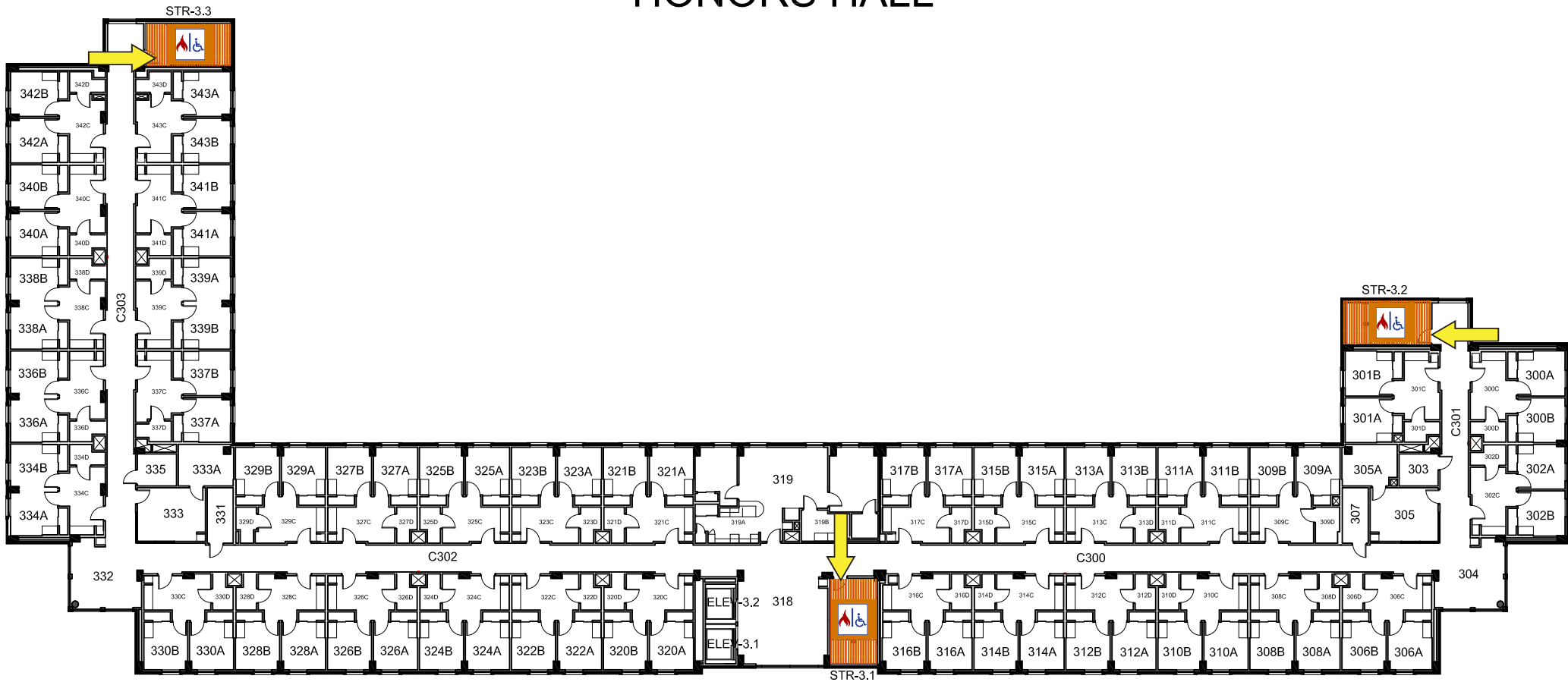
SECOND FLOOR PLAN



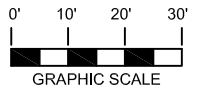
LEGEND

- Fire Refuge Area
- Exit

HONORS HALL



THIRD FLOOR PLAN



LEGEND

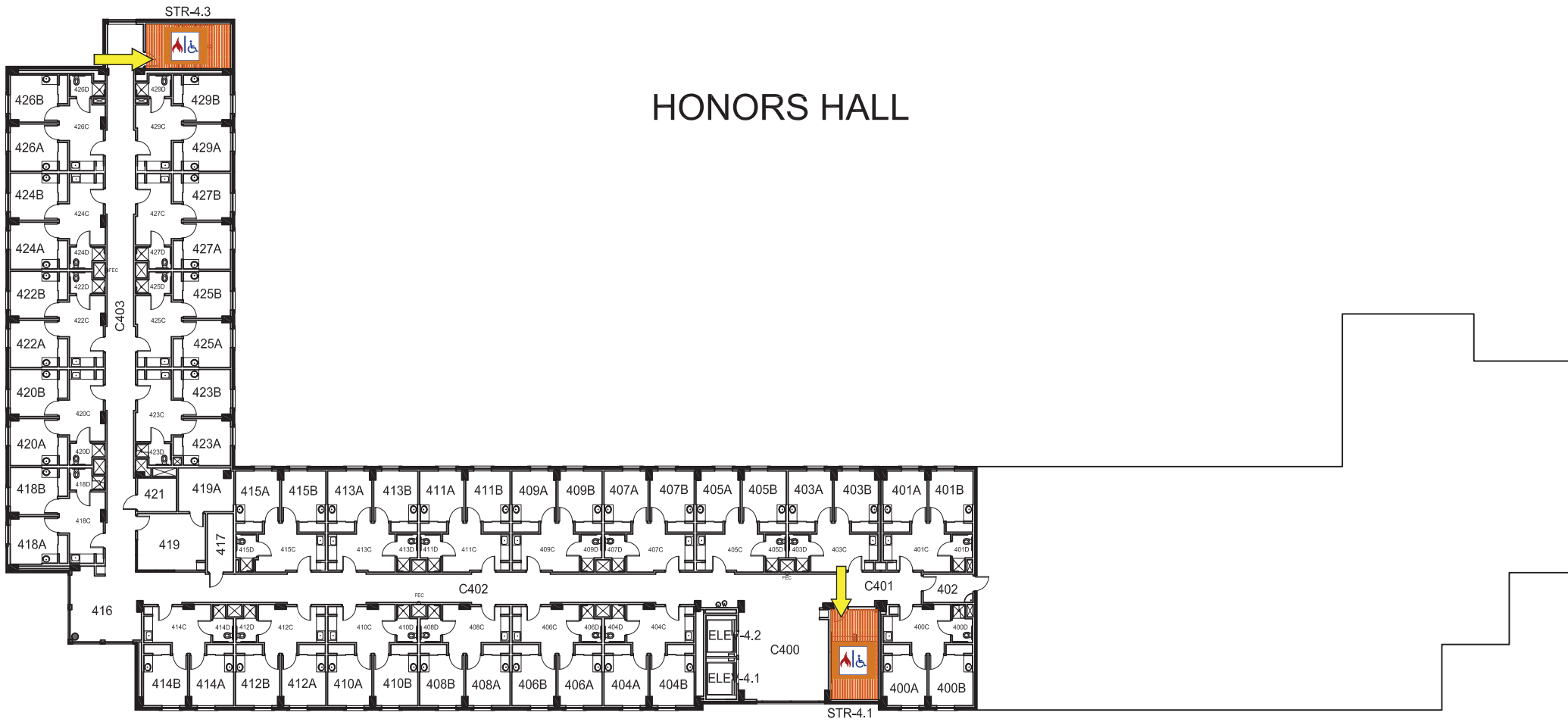


Fire Refuge Area



Exit



HONORS HALL



FOURTH FLOOR PLAN



LEGEND

-  Fire Refuge Area
-  Exit