



# Emergency Procedures

## Language Building

108 Avenue A, Denton, TX 76201

### Shelter

You may need to take shelter for **severe weather** (most common) or a **hazardous materials release**.

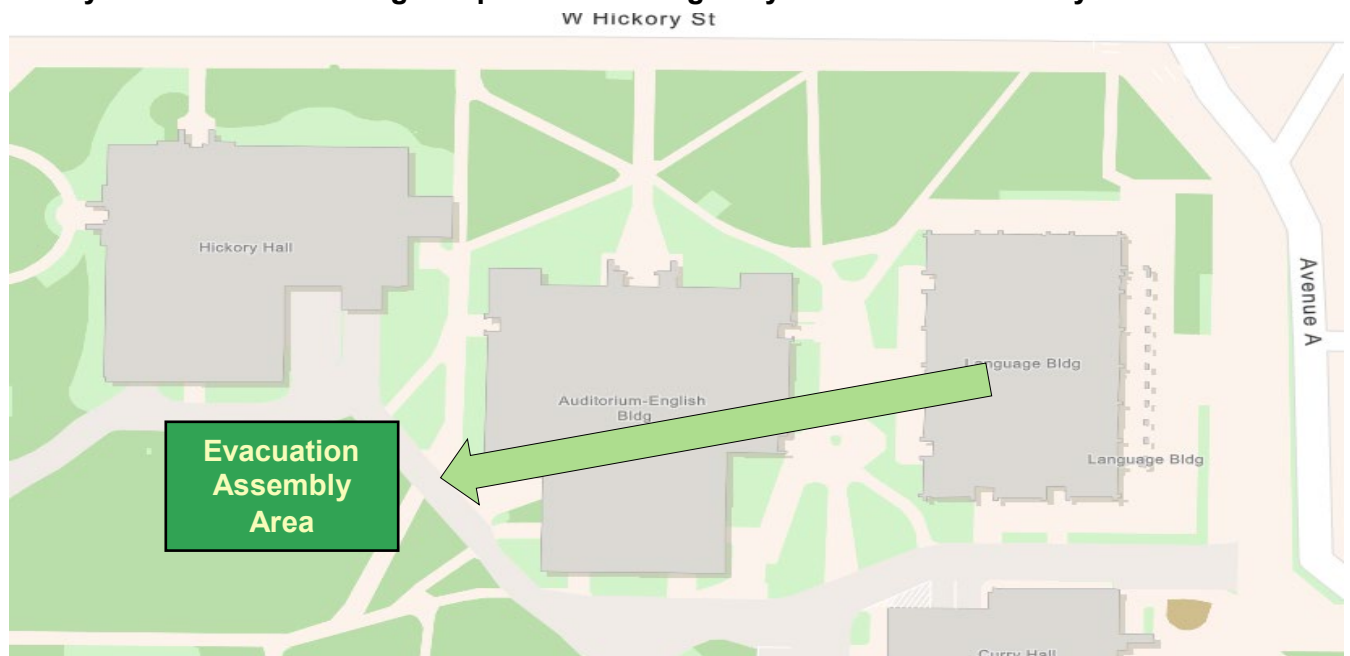
During an incident requiring individuals to take **shelter**, all building occupants should immediately move to the designated Tornado Shelter Areas in the building. If unable to safely move to the designated shelter area, seek shelter in a windowless interior room or hallway on the lowest floor of the building.

**All building occupants should take shelter in the interior hallways and restrooms on the lowest floor, room 113, and the second floor interior hallway. Avoid standing near windows, exterior walls, and doors made of glass.**

### Evacuation

If you need to evacuate the building—for a fire, bomb threat, gas leak, or other event—all building occupants should immediately move to the nearest EXIT. Once outside, proceed to the designated Evacuation Assembly Area. If unable to safely move to the designated assembly area, contact one or more members of your department or unit to let them know you are safe and your whereabouts.

Persons with mobility impairments who are unable to safely exit the building should be moved to a designated **Fire Refuge Area** and await assistance from emergency responders. An Evacuation Chair, which is located on the fourth floor in the stairwell on the east side of the building makes it possible for anyone **to assist someone** with reduced mobility to descend the stairs quickly. It is specifically designed so that an individual may transport a person with reduced mobility downstairs during an evacuation. **All building occupants should immediately evacuate the building and proceed to the grassy area south of Hickory Hall.**



For more information on what to do in a specific emergency situation, refer to the UNT Emergency Guidelines on [www.emergency.unt.edu](http://www.emergency.unt.edu) or the Mean Green Ready app. **Call 911 in an emergency!**

# LEGEND



Shelter Area



Fire Refuge Area



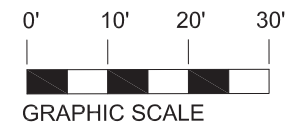
Exit



Automated External Defibrillator


# LANGUAGE BUILDING

## FIRST FLOOR PLAN



# LEGEND

 Shelter Area

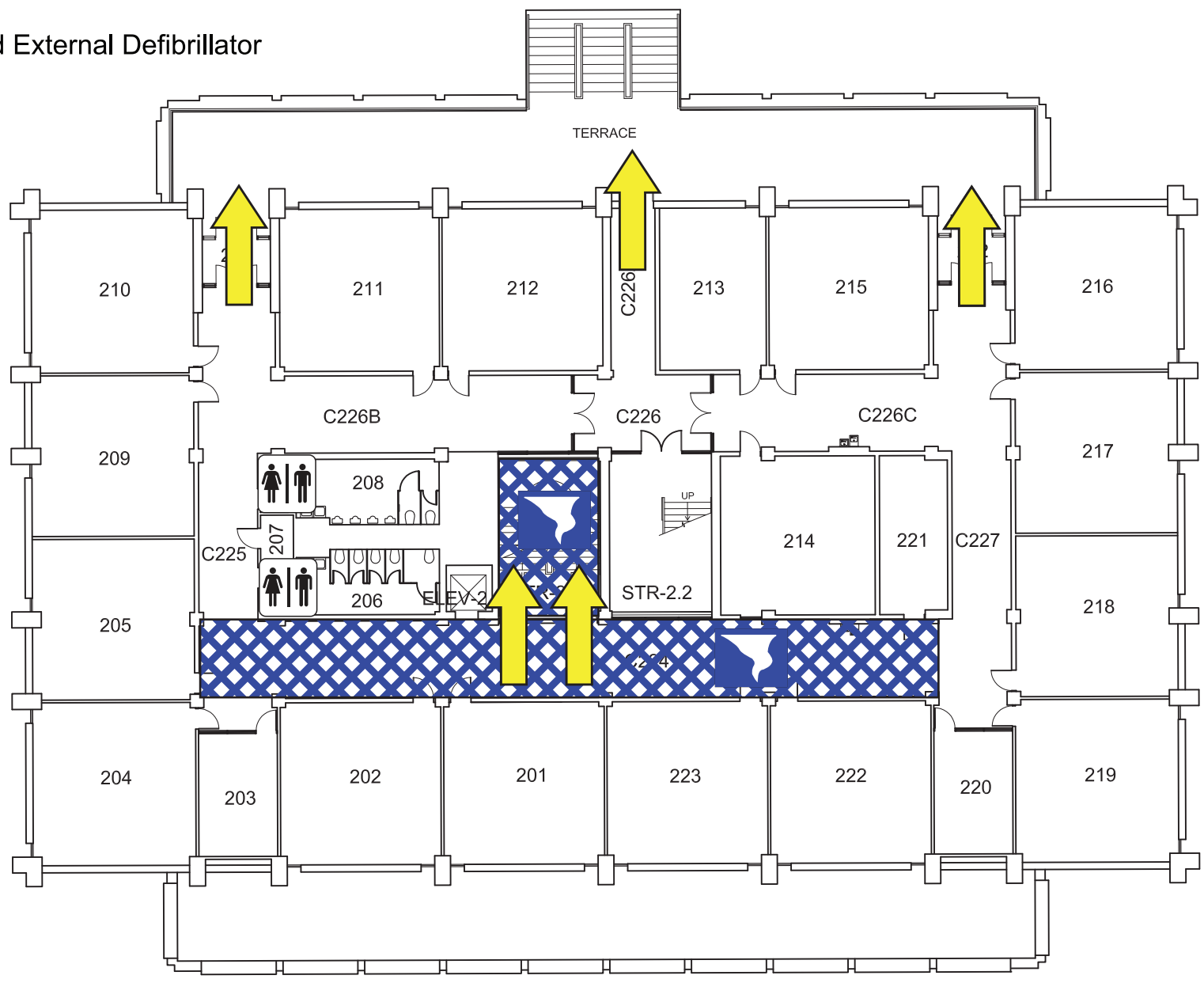
 Fire Refuge Area

 Exit

 Automated External Defibrillator

# LANGUAGE BUILDING

## SECOND FLOOR PLAN



# LEGEND



Shelter Area



Fire Refuge Area



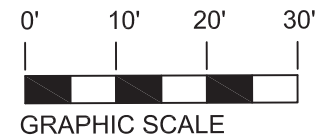
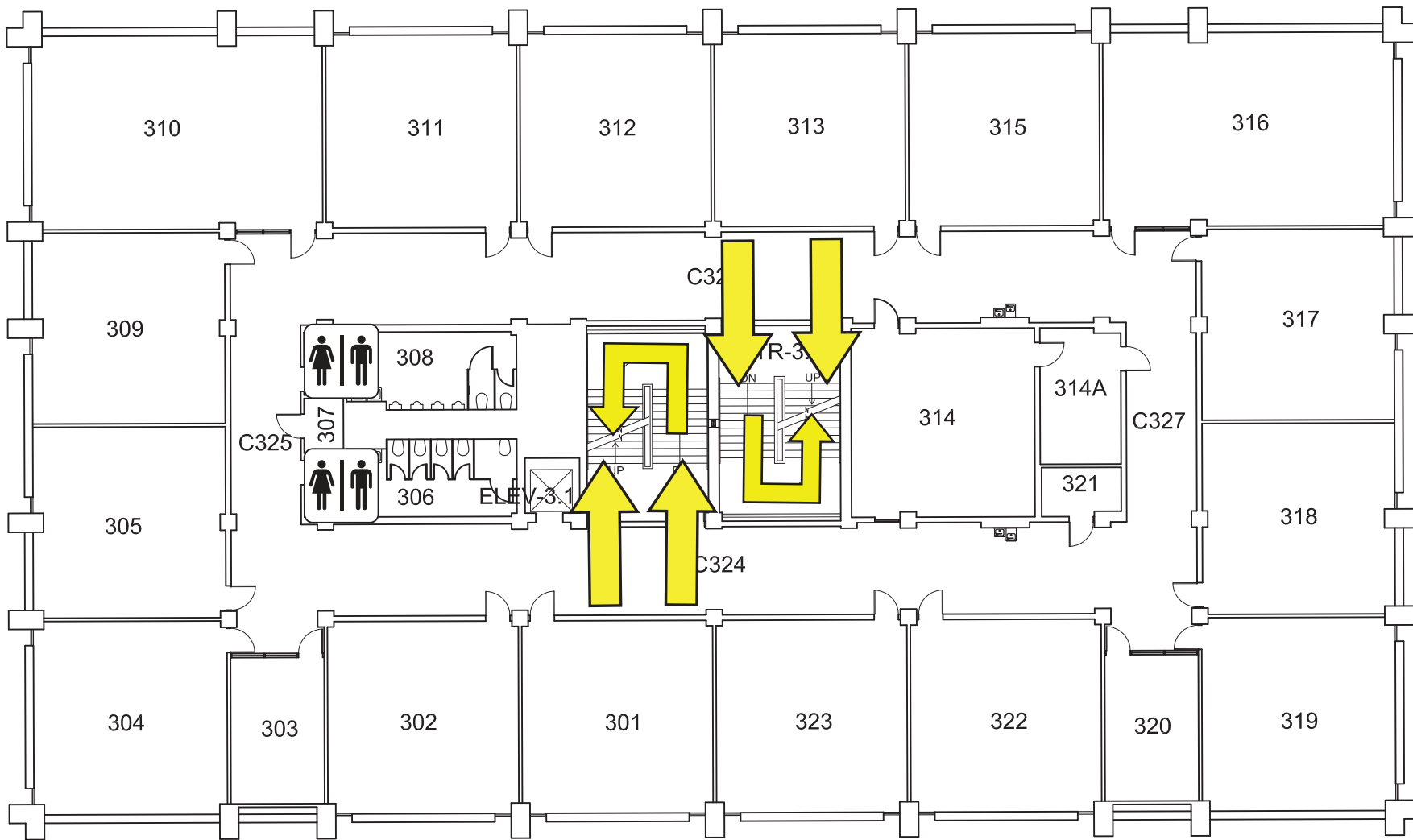
Exit



Automated External Defibrillator

# LANGUAGE BUILDING

## THIRD FLOOR PLAN





# LEGEND



Shelter Area



Fire Refuge Area



Exit



Automated External Defibrillator

# LANGUAGE BLDG ROOF PLAN

