



Emergency Procedures for Library Annex Building

941 Precision Dr., Denton, TX 76207

Shelter

You may need to take shelter for **severe weather** (most common) or a **hazardous materials release**.

During an incident requiring individuals to take **shelter**, all building occupants should immediately move to the designated Tornado Shelter Areas in the building. If unable to safely move to the designated shelter area, seek shelter in a windowless interior room or hallway on the lowest floor of the building.

All building occupants should take shelter in room C128 or the north side hallway past room 130. Avoid standing near windows, exterior walls, and doors made of glass.

Evacuation

If you need to evacuate the building—for a fire, bomb threat, gas leak, or other event—all building occupants should immediately move to the nearest EXIT. Once outside, proceed to the designated Evacuation Assembly Area. If unable to safely move to the designated assembly area, contact one or more members of your department or unit to let them know you are safe and your whereabouts.

Persons with mobility impairments who are unable to safely exit the building should be moved to a designated **Area of Refuge** (also called a **Fire Refuge Area**) and await assistance from emergency responders.

All building occupants should immediately evacuate the building and proceed to Parking Lot 62 between the Library Annex and the Surplus Warehouse.

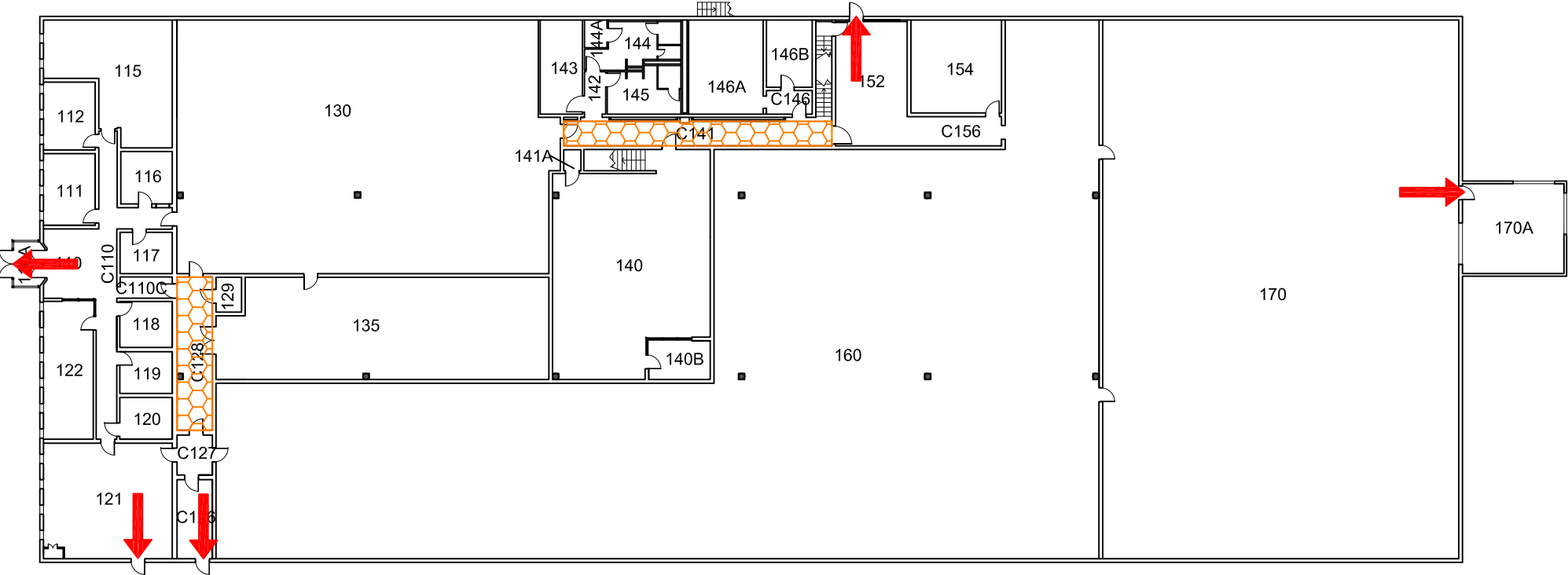
For more information on what to do in a specific emergency situation, refer to the UNT Emergency Guidelines on www.emergency.unt.edu or the Mean Green Ready app. **Call 911 in an emergency!**



LIBRARY ANNEX BUILDING



BUILDING # 0170
12-2008

Exterior Gross Area
37068



FIRST FLOOR PLAN

Safety Legend

-  Tornado Shelter Areas
 -  Exit/Evacuation Routes
- In case of fire, do not use elevator*

