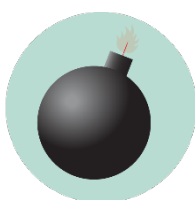


LIFE SCIENCES COMPLEX EMERGENCY GUIDELINES

Call or text 911 in life threatening emergencies



FIRE



BOMB THREAT



**GAS
LEAK**



HAZMAT



**SEVERE
WEATHER**



HAZMAT

Evacuation

PROMPTS: Fire alarm, direction from the UNT Police or City of Denton Fire Department, an Eagle Alert, a visibly life-threatening situation

- Gather those around you and quickly leave through the nearest exit.
- Ask those around you with limited mobility if they need help and provide assistance, as able.
- If you take notice of someone unable to evacuate, note their location and tell first responders as soon as possible.
- Those with access and functional needs should immediately go to the nearest fire refuge area and call 911.
- Move at least 200 feet away from the building and stay off fire lanes.
- Comply with directions from first responders.

Shelter

PROMPTS: Eagle Alert, Outdoor Warning Sirens

- Go indoors immediately.
- Seek shelter on the lowest level of the building, away from windows and exterior walls.
- For tornadoes: Encourage others to shield their head and neck with arms and putting material such as furniture and blankets around themselves.
- If the event is HAZMAT related, completely turn off or seal off all external air sources including windows, doors, and air vents.
- Stay in shelter until an Eagle Alert is sent telling you it's safe to leave.

Respond to a Medical Emergency

- Call 911 (or have someone call 911 for you).
- Send others to get an AED and to meet first responders at the door.
- Ask the individual if you have their permission to assist them.
 - If **YES**, provide first aid to the extent that you feel able.
 - If **NO**, move away from the individual and wait for first responders.
 - If **unconscious**, you have implied consent to provide assistance, as long as you are not negligent.
- Assist paramedics as needed when they arrive.
- Gather info and report the incident to Risk Management Services.



**MEDICAL
EMERGENCY**



**ACTIVE
THREAT**

Run. Hide. Fight. (Active Threat)

PROMPTS: Eagle Alert; successive, loud shot noises; groups of individuals running and screaming

- **RUN** and escape the active threat if possible.
- **HIDE** from the active threat if escape is not possible.
- **FIGHT** the attacker as a last resort and commit to your actions.

CAMPUS EMERGENCY CONTACTS

<p>Any life-threatening emergency Active threat Acts or threats of violence Bomb threat Fire Hostage situation Life-threatening hazardous materials release Medical emergencies Natural gas leak Suicidal person Violent civil disturbance or demonstration Violent/threatening/hostile individual</p>	<p>911 <i>Call or text 911 in life-threatening emergencies</i></p>
<p>Any non-emergency concerns Civil disturbance or demonstration Disruptive person Elevator failure Suspicious person</p>	<p>UNT Police 940-565-3000</p>
<p>Maintenance-related issues Power outage Water leak or flooding Property damage</p>	<p>UNT Facilities 940-565-2700</p>
<p>Minor hazardous materials release</p>	<p>UNT Risk Management 940-565-2109</p>

If you are unsure if a situation is or is not an emergency, always call 911.

LIFE SCIENCES COMPLEX EMERGENCY LOCATIONS AND SUPPLIES



Shelter Areas

- First floor interior hallways

Evacuation Assembly Area

Evacuation Assembly Area

- The area behind the University Union Building, unless directed elsewhere by first responders or an Eagle Alert.
- Wait to re-enter the building until UNT Police or Denton Fire Department give an all-clear.
- **Note:** Never put yourself in danger during an evacuation.



Medical Emergency Related Equipment

- First Aid Kits: Prep Room and Lab 1082 & 1760
- AEDs: First floor by the elevator in the center of B-wing southern hallway



Fire Refuge Areas: A temporary haven from the effects of a fire or other emergency that would normally require evacuation.

- **A-wing: 4th floor south stairwell**
- **B-wing: 5th floor north stairwell**



Special Emergency Procedures for Life Sciences Complex Biohazard Cleanup

Following the OSHA Bloodborne Standard, UNT has established specific protocols for blood, other bodily fluids, and other potentially infectious materials (OPIM) cleanup. The protocols begin with ensuring that any worker who will be involved in the cleanup of blood, bodily fluids, or OPIM have proper (and up to date-annually) remediation training (Bloodborne Pathogen and Exposure Control Training-BBB/ECP).

If you have not been trained on biohazardous cleanup, are not current on your training (BBP/ECP), or do not have the proper PPE, DO NOT attempt clean-up and removal. Please contact Risk Management Services (940-565-2109) for assistance. Workers without current BBP/ECP training must not participate in biohazardous waste cleanup. If you have received proper training and are equipped to perform biohazardous waste cleanup, please refer to [this guidance \(https://bit.ly/UNT-BioWaste-Guidelines\)](https://bit.ly/UNT-BioWaste-Guidelines).

LEGEND



Shelter Area



Fire Refuge Area



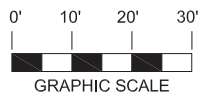
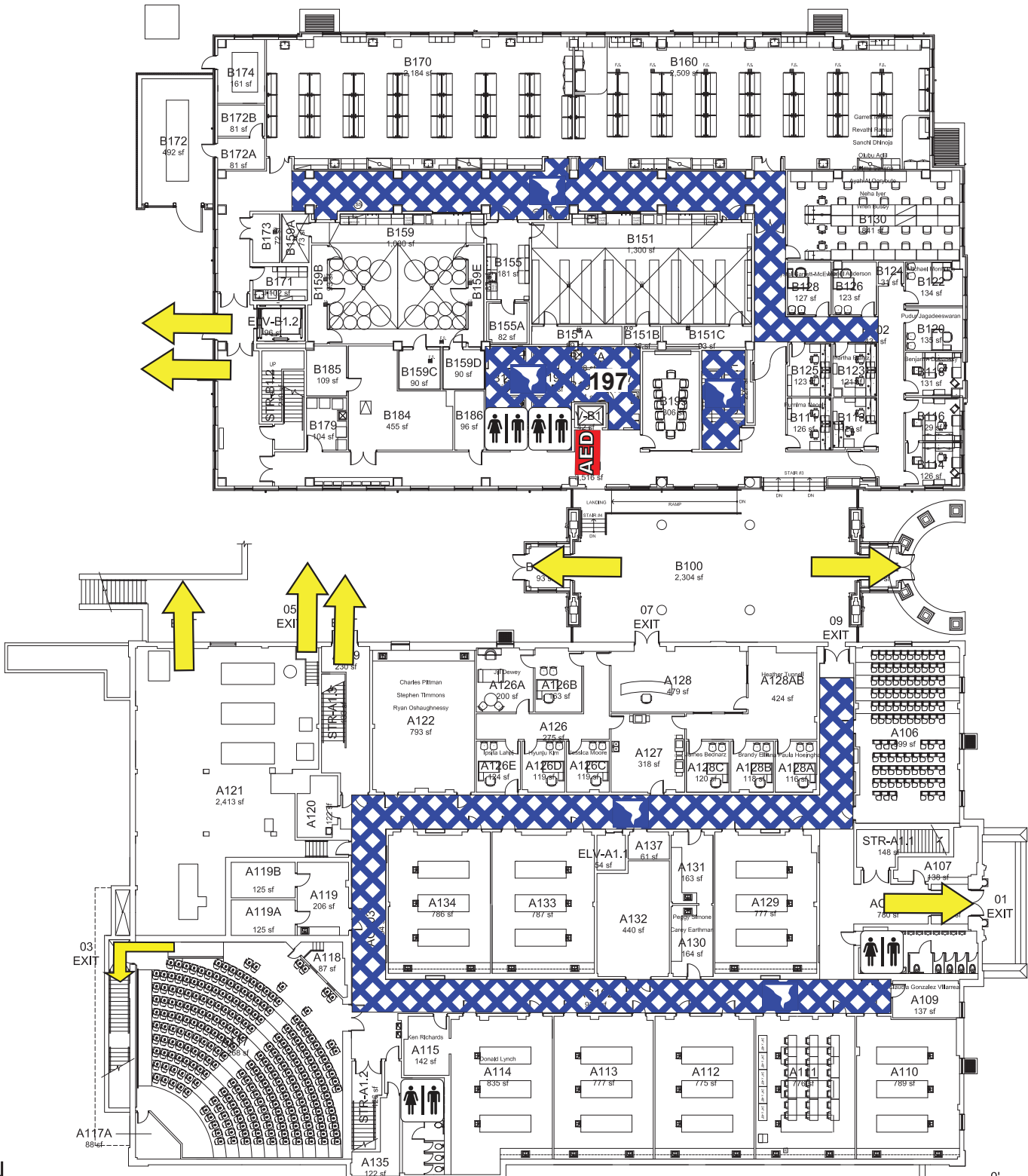
Exit



Automated External Defibrillator





LIFE SCIENCE COMPLEX

FIRST FLOOR PLAN



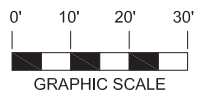
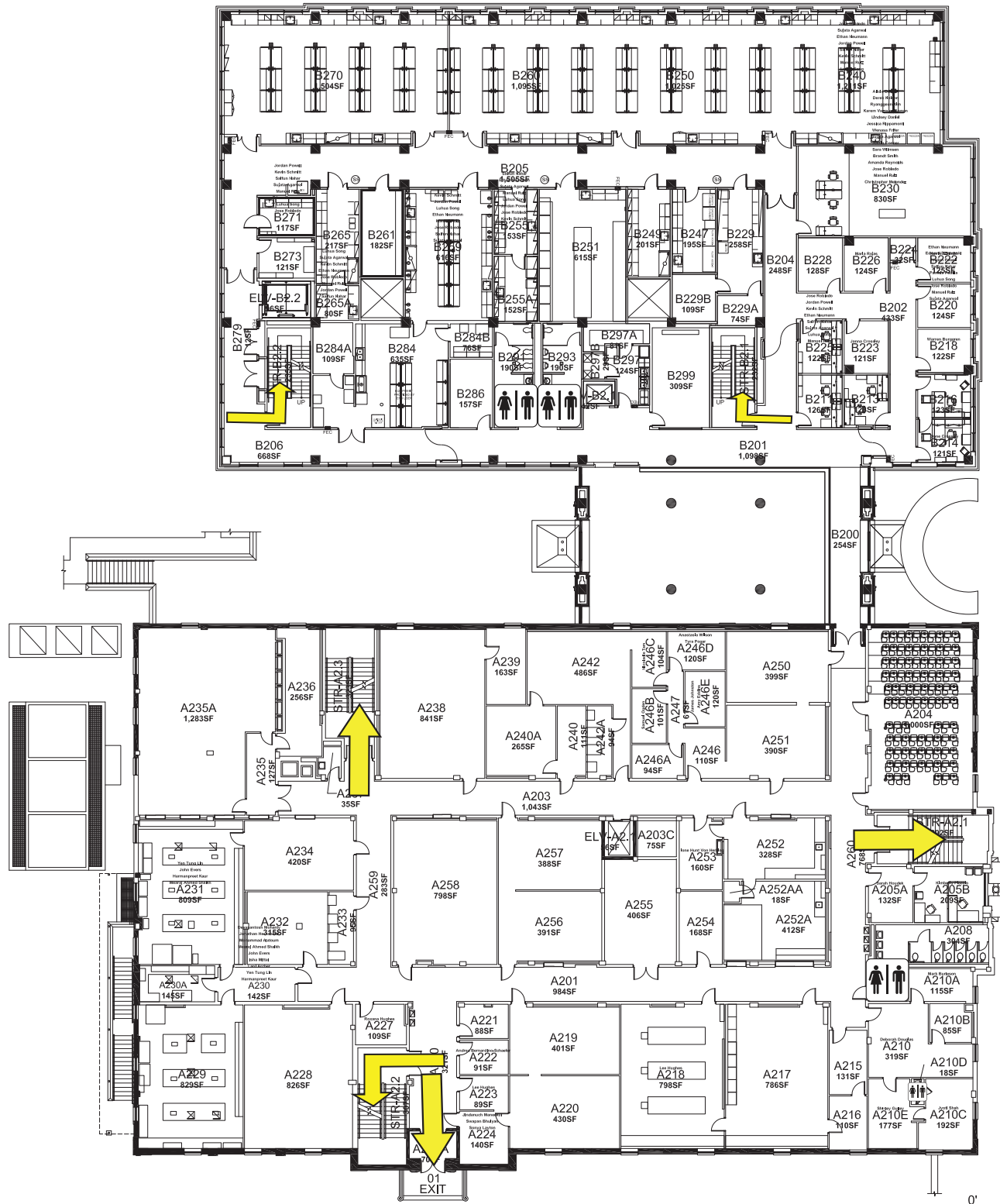
GRAPHIC SCALE

LEGEND

-  Shelter Area
-  Fire Refuge Area
-  Exit
-  Automated External Defibrillator

LIFE SCIENCE COMPLEX

SECOND FLOOR PLAN



LEGEND



Shelter Area



Fire Refuge Area



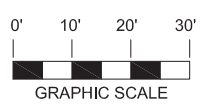
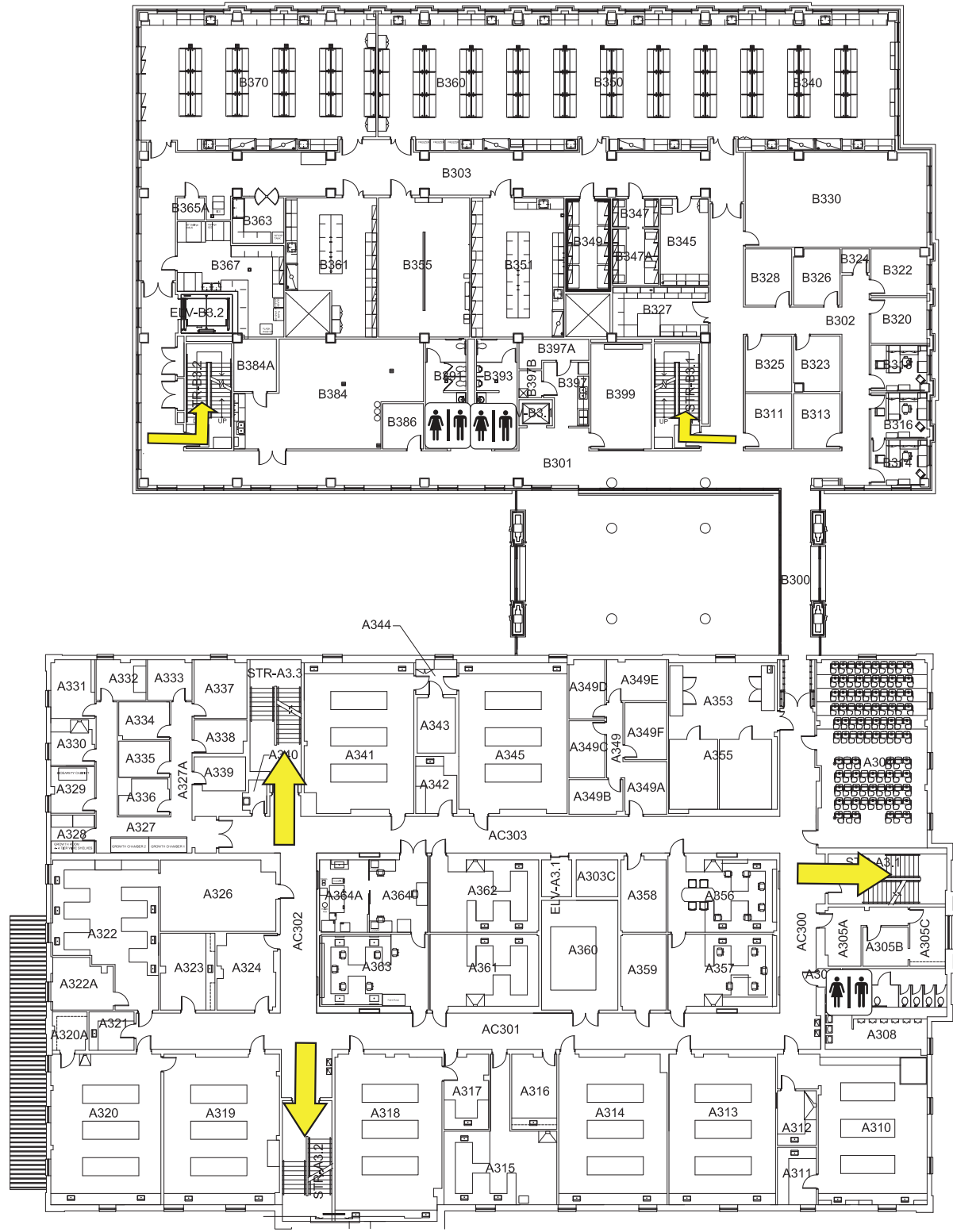
Exit



Automated External Defibrillator

LIFE SCIENCE COMPLEX

THIRD FLOOR PLAN



LEGEND

 Shelter Area

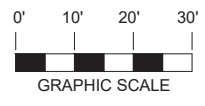
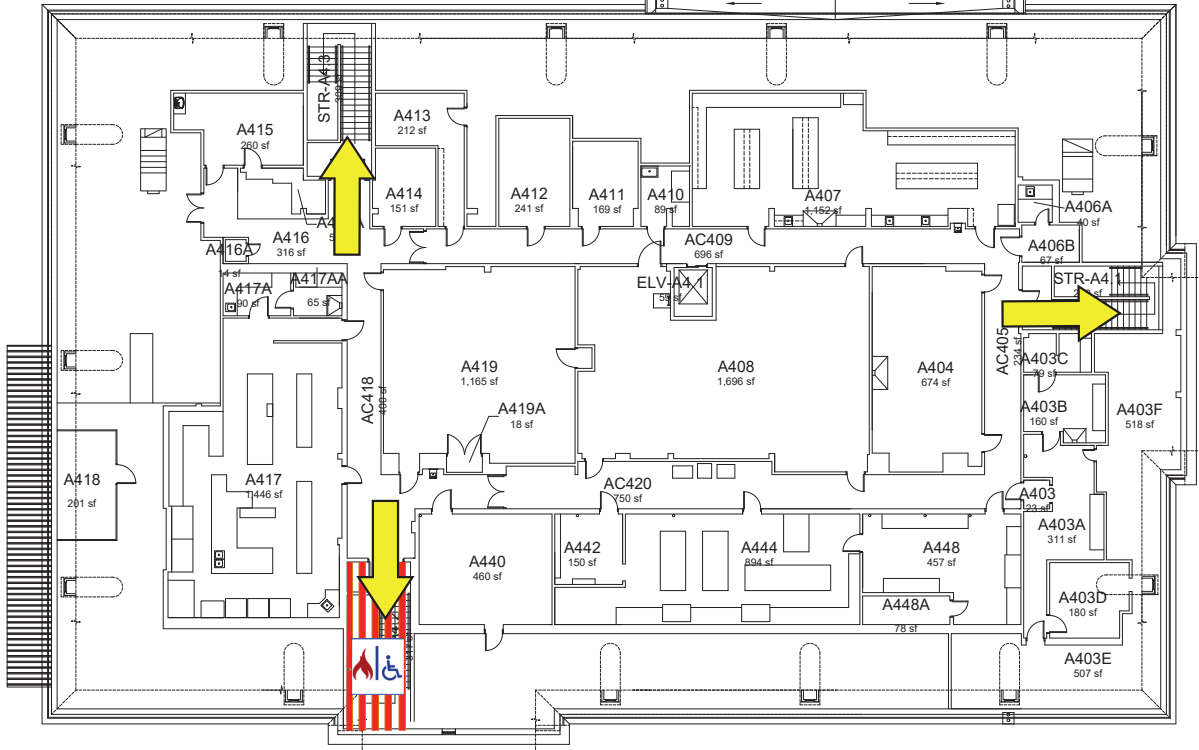
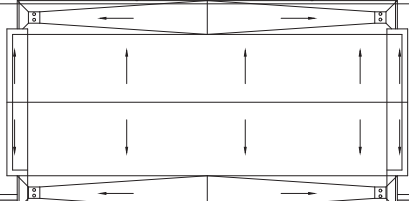
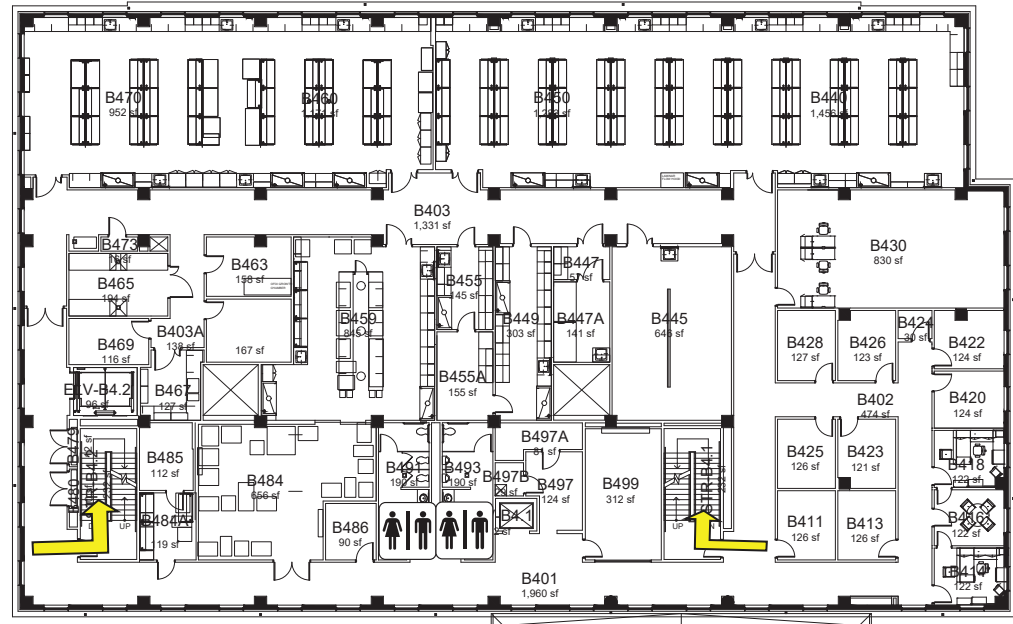
 Fire Refuge Area

 Exit

 Automated External Defibrillator

LIFE SCIENCE COMPLEX

FOURTH FLOOR PLAN



LEGEND

 Shelter Area

 Fire Refuge Area

 Exit

 AED Automated External Defibrillator

LIFE SCIENCE COMPLEX

FIFTH FLOOR PLAN

