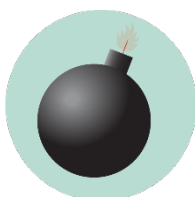


MUSIC PRACTICE COMPLEX EMERGENCY GUIDELINES

Call or text 911 in life threatening emergencies



FIRE



BOMB THREAT



**GAS
LEAK**



HAZMAT



**SEVERE
WEATHER**



HAZMAT

Evacuation

PROMPTS: Fire alarm, direction from the UNT Police or City of Denton Fire Department, an Eagle Alert, a visibly life-threatening situation

- Gather those around you and quickly leave through the nearest exit.
- Ask those around you with limited mobility if they need help and provide assistance, as able.
- If you take notice of someone unable to evacuate, note their location and tell first responders as soon as possible.
- Those with access and functional needs should immediately go to the nearest fire refuge area and call 911.
- Move at least 200 feet away from the building and stay off fire lanes.
- Comply with directions from first responders.

Shelter

PROMPTS: Eagle Alert, Outdoor Warning Sirens

- Go indoors immediately.
- Seek shelter on the lowest level of the building, away from windows and exterior walls.
- For tornadoes: Encourage clients to shield their head and neck with arms and putting material such as furniture and blankets around themselves.
- If the event is HAZMAT related, completely turn off or seal off all external air sources including windows, doors, and air vents.
- Stay in shelter until an Eagle Alert is sent telling you it's safe to leave.

Medical Emergency

- Call 911 (or have someone call 911 for you).
- Send others to get an AED and to meet first responders at the door.
- Ask the individual if you have their permission to assist them.
 - If **YES**, provide first aid to the extent that you feel able .
 - If **NO**, move away from the individual and wait for first responders.
 - If **unconscious**, you have implied consent to provide assistance, as long as you are not negligent.
- Assist paramedics as needed when they arrive.
- Gather info and report the incident to Risk Management Services.

Run. Hide. Fight.

PROMPTS: Eagle Alert; successive, loud shot noises; groups of individuals running and screaming

- **RUN** and escape the active threat if possible.
- **HIDE** from the active threat if escape is not possible.
- **FIGHT** the attacker as a last resort and commit to your actions.



**MEDICAL
EMERGENCY**



**ACTIVE
THREAT**

CAMPUS EMERGENCY CONTACTS

<p>Any life-threatening emergency Active threat Acts or threats of violence Bomb threat Fire Hostage situation Life-threatening hazardous materials release Medical emergencies Natural gas leak Suicidal person Violent civil disturbance or demonstration Violent/threatening/hostile individual</p>	<p><i>Call or text 911 in life-threatening emergencies</i> 911</p>
<p>Any non-emergency concerns Civil disturbance or demonstration Disruptive person Elevator failure Suspicious person</p>	<p><i>UNT Police</i> 940-565-3000</p>
<p>Maintenance-related issues Power outage Water leak or flooding Property damage</p>	<p><i>UNT Facilities</i> 940-565-2700</p>
<p>Minor hazardous materials release</p>	<p><i>UNT Risk Management</i> 940-565-2109</p>

If you are unsure if a situation is or is not an emergency, always call 911.

MUSIC PRACTICE NORTH EMERGENCY LOCATIONS AND SUPPLIES



Shelter Areas

- The restrooms and interior hallways on the 1st floor.

Evacuation Assembly Area

Evacuation Assembly Area

- The west end of Parking Lot 26, west of Music Practice North, *unless directed to go elsewhere by first responders or an Eagle Alert.*

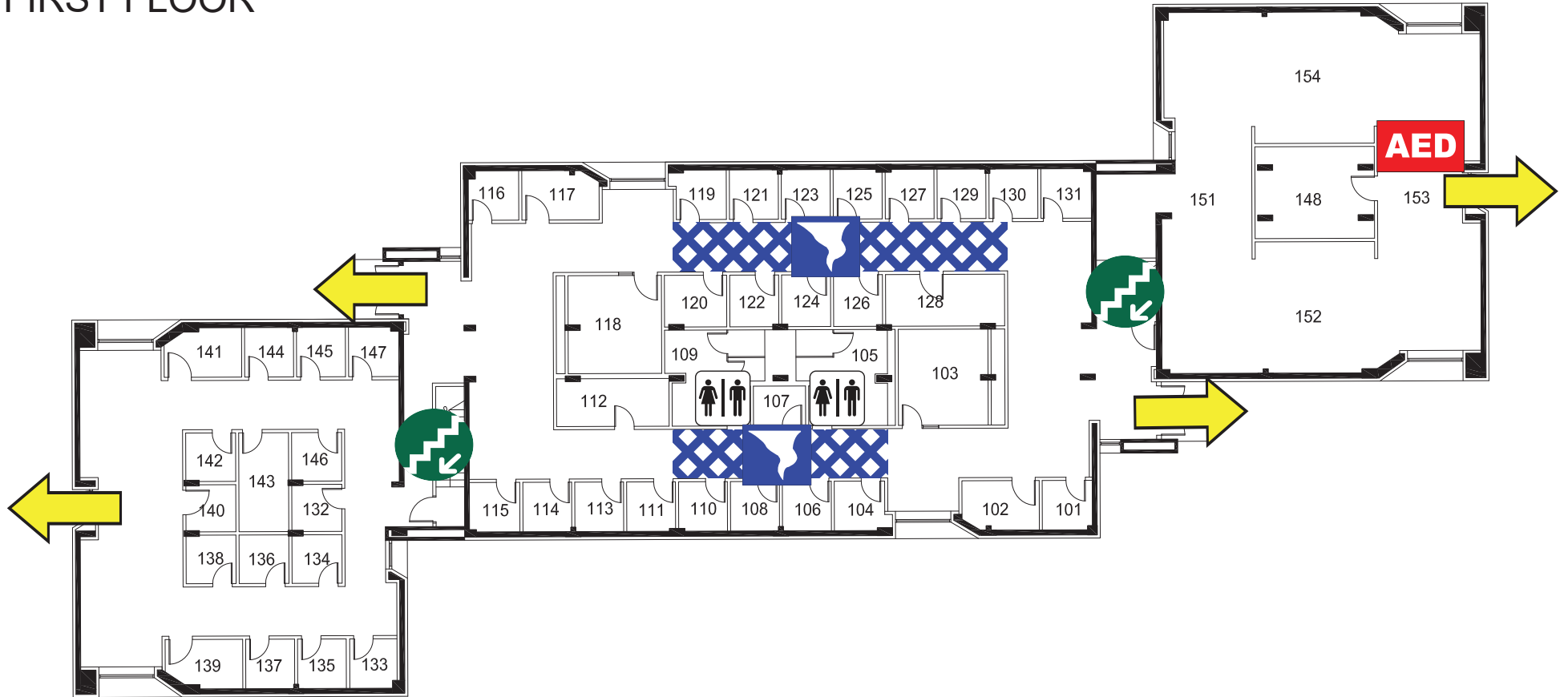


Medical Emergency Related Equipment

- **First Aid Kits:** The nearest first aid kits are in the Music Building. They can be located in Room 247 and Room 291.
- **AEDs:** the east entrance on the first floor next to Room 148.
- **Fire Extinguishers:** *1st floor* by rooms 114 and 130; *2nd floor* by rooms 247 and 230; *3rd floor* by rooms 347 and 330.

MUSIC PRACTICE NORTH

FIRST FLOOR




LEGEND

AED Automated External Defibrillator

 Exit

 Stairs

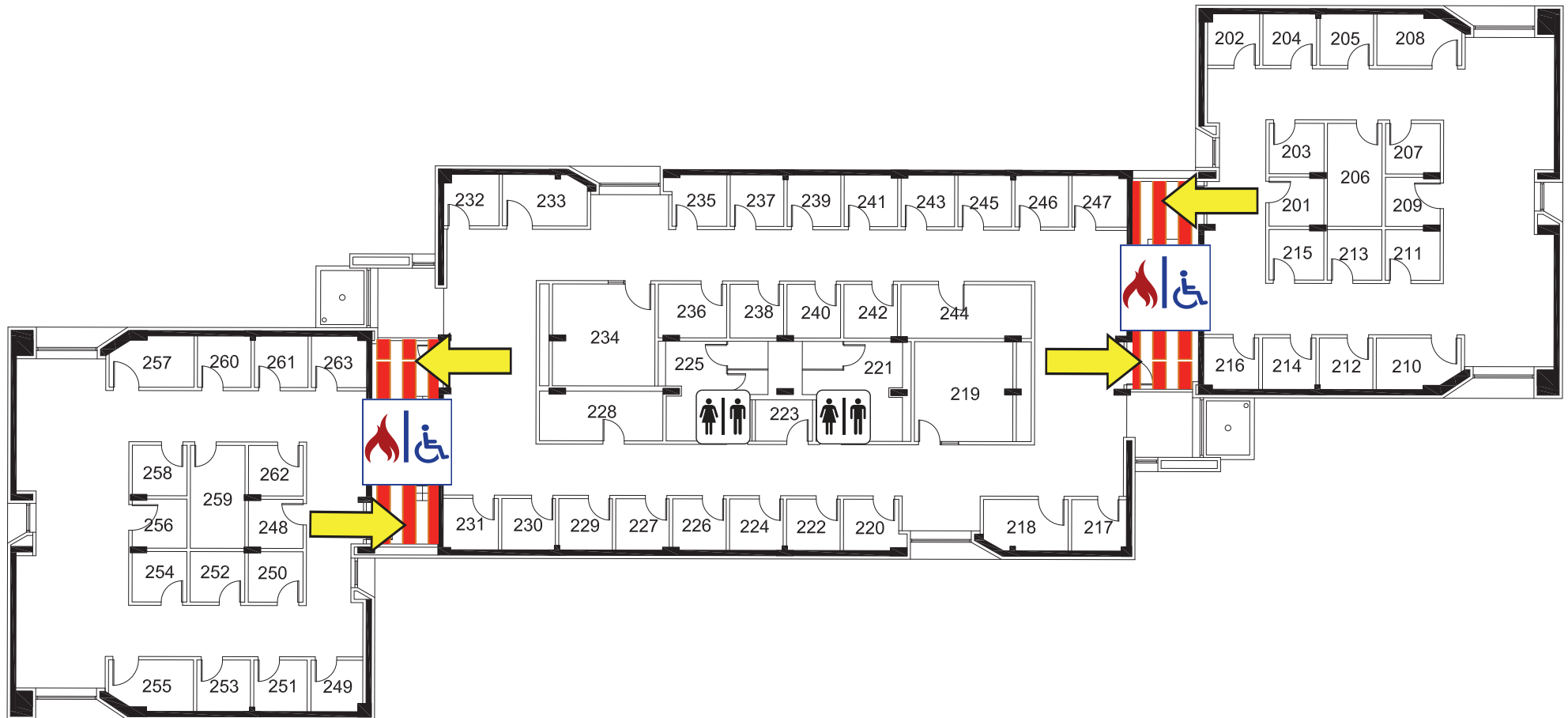
 Restrooms

 Shelter Area



MUSIC PRACTICE NORTH

SECOND FLOOR



LEGEND



Exit



Fire Refuge Area

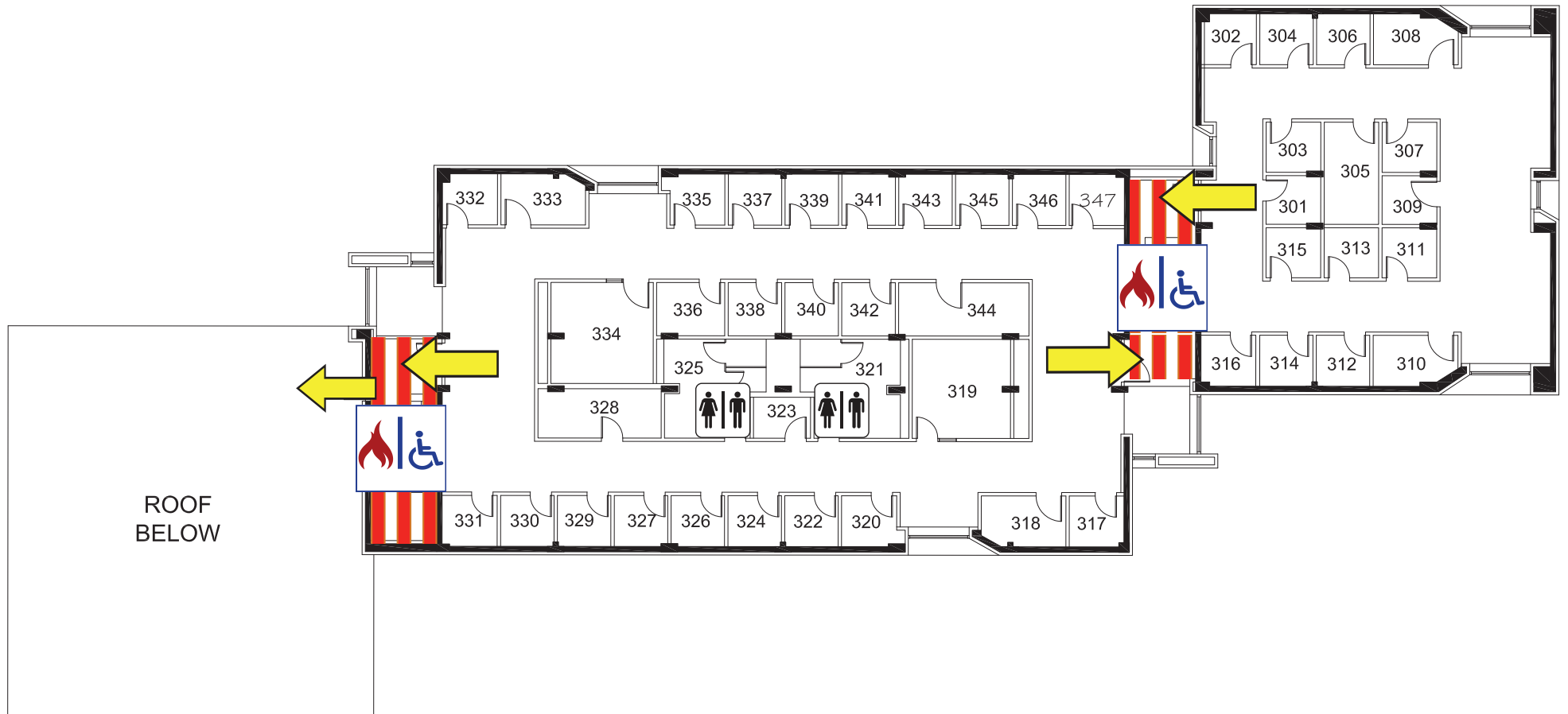


Restrooms



MUSIC PRACTICE NORTH

THIRD FLOOR



LEGEND



Exit



Fire Refuge Area



Restrooms



MUSIC PRACTICE SOUTH EMERGENCY LOCATIONS AND SUPPLIES



Shelter Areas

- The restrooms and interior hallways on the 1st floor.

Evacuation Assembly Area

Evacuation Assembly Area

- The west end of Parking Lot 26, west of the Music Practice South, *unless directed to go elsewhere by first responders or an Eagle Alert.*



Medical Emergency Related Equipment

- **First Aid Kits:** in the Music Building in room 247 and 291.
- **AEDs:** The east entrance on the first floor next to Room 109.
- **Fire Extinguishers:** 1st floor by rooms 147 and 130; 2nd floor by rooms 247 and 230; 3rd floor by rooms 347, 330, and outside the boiler room.



Fire Refuge Areas: A temporary haven from the effects of a fire or other emergency that would normally require evacuation.

- Located on the eastern and western side of the building in the stairwells on the 2nd and 3rd floors.

MUSIC PRACTICE SOUTH

FIRST FLOOR PLAN

LEGEND



Shelter Area



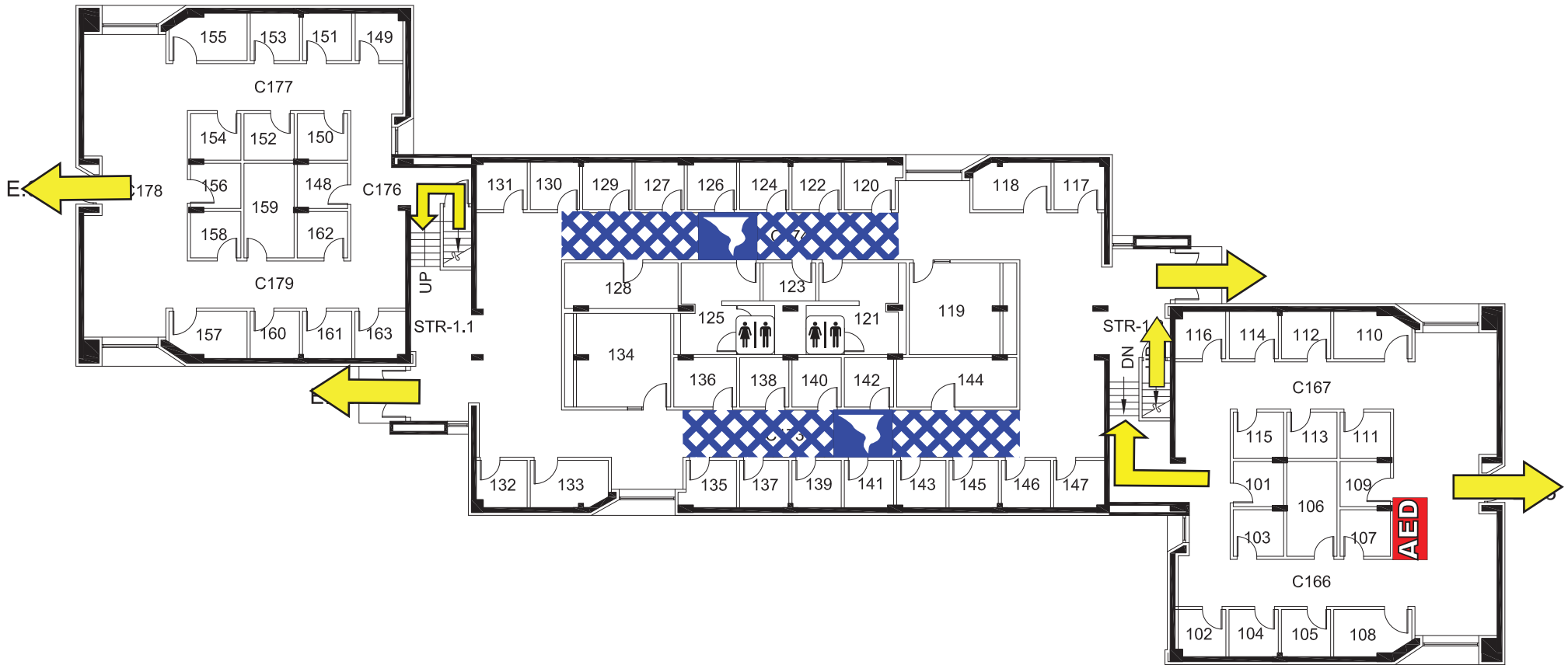
Fire Refuge Area



Exit



Automated External Defibrillator



MUSIC PRACTICE SOUTH

SECOND FLOOR PLAN

LEGEND



Shelter Area



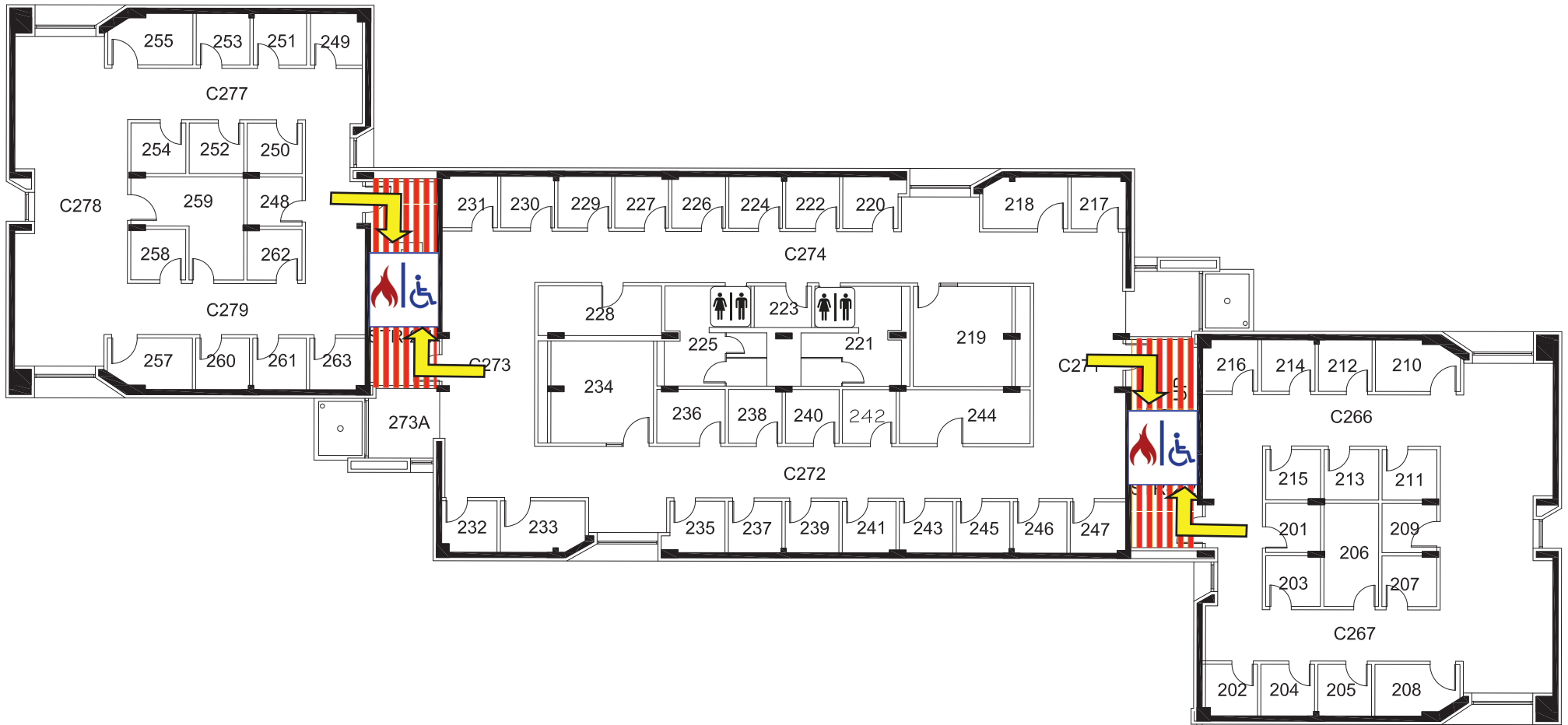
Fire Refuge Area



Exit



Automated External Defibrillator



N



GRAPHIC SCALE

MUSIC PRACTICE SOUTH

THIRD FLOOR PLAN

LEGEND



Shelter Area



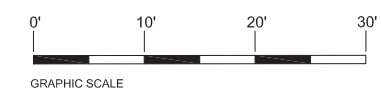
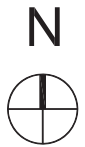
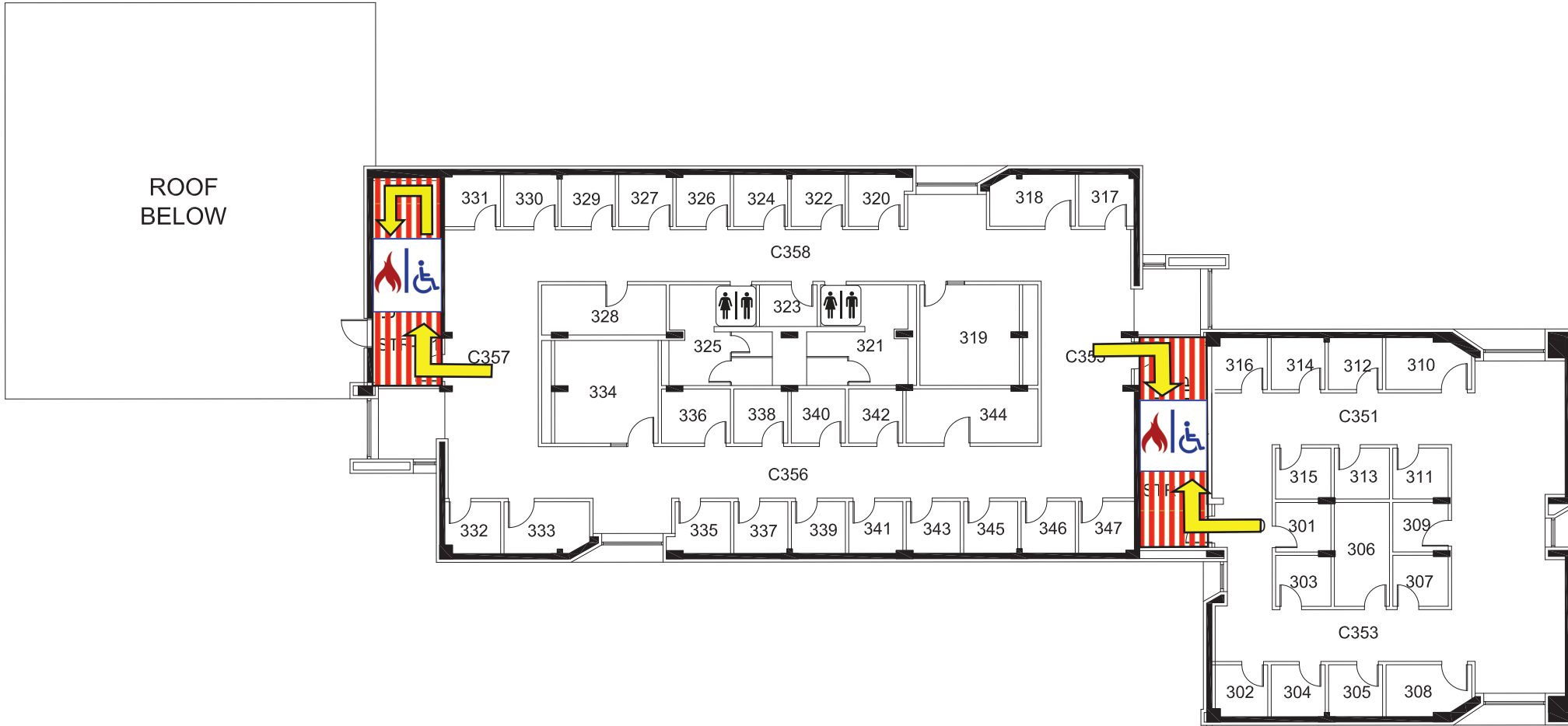
Fire Refuge Area



Exit



AED Automated External Defibrillator



BAIN HALL

EMERGENCY LOCATIONS AND SUPPLIES



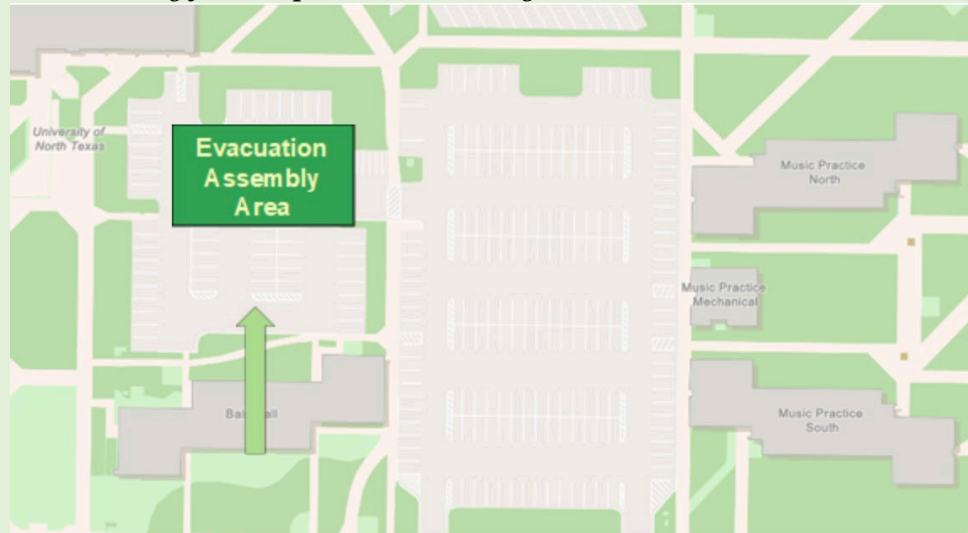
Shelter Areas

- The restrooms and interior hallways on the 1st floor.

Evacuation
Assembly
Area

Evacuation Assembly Area

- The west end of Parking Lot 26, north of Bain Hall, *unless directed to go elsewhere by first responders or an Eagle Alert.*



Medical Emergency Related Equipment

- **First Aid Kits:** *Please Update.*
- **AEDs:** the first floor next to rooms 109 and 110
- **Fire Extinguishers:** *Please Update.*

LEGEND

 Shelter Area

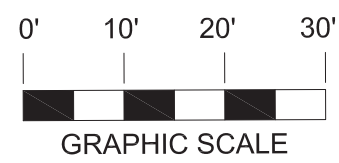
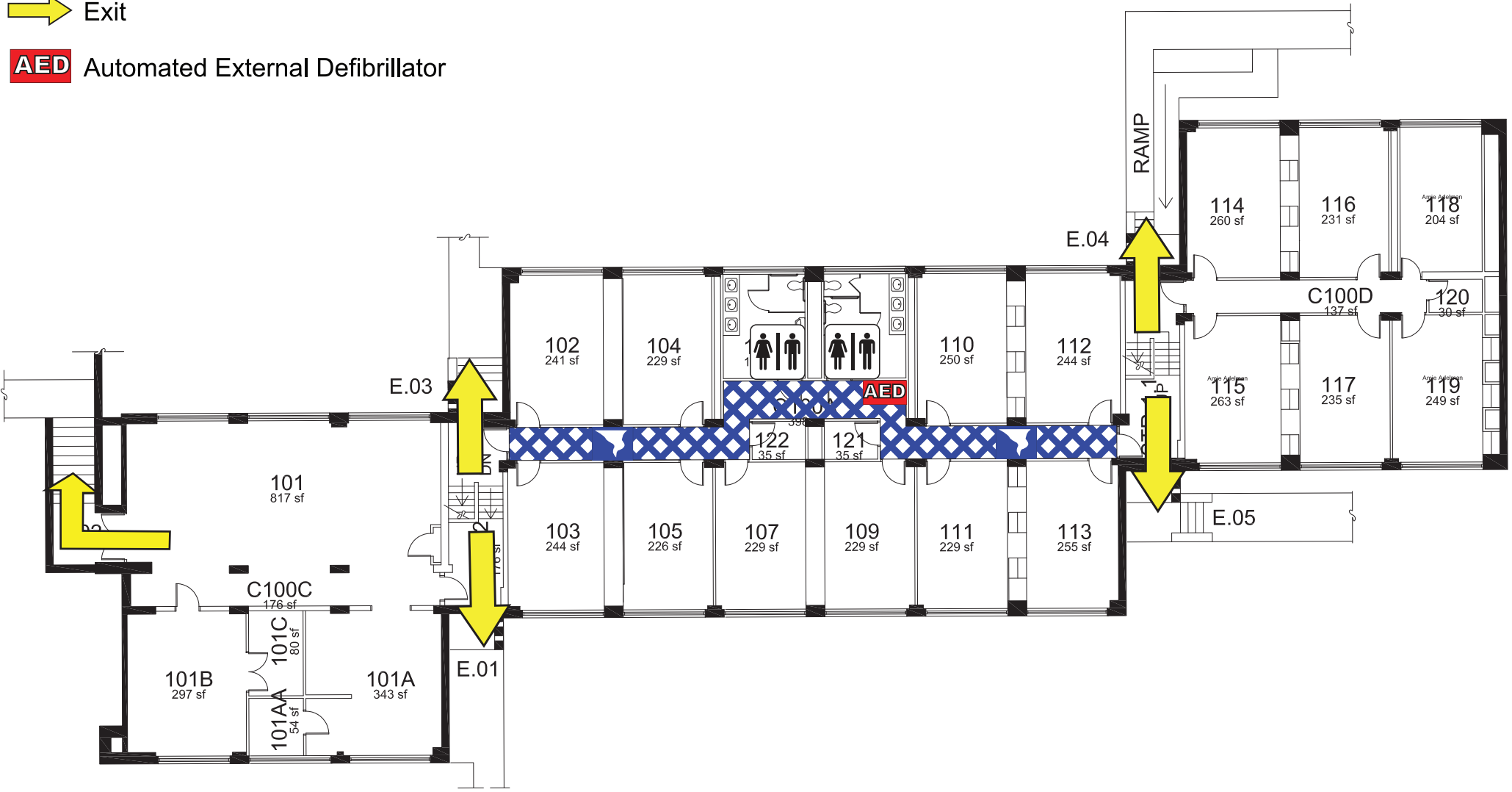
 Fire Refuge Area

 Exit

 AED Automated External Defibrillator

BAIN HALL

FIRST FLOOR PLAN



LEGEND

 Shelter Area

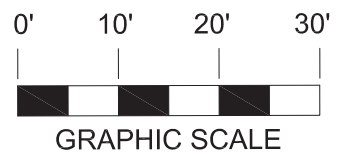
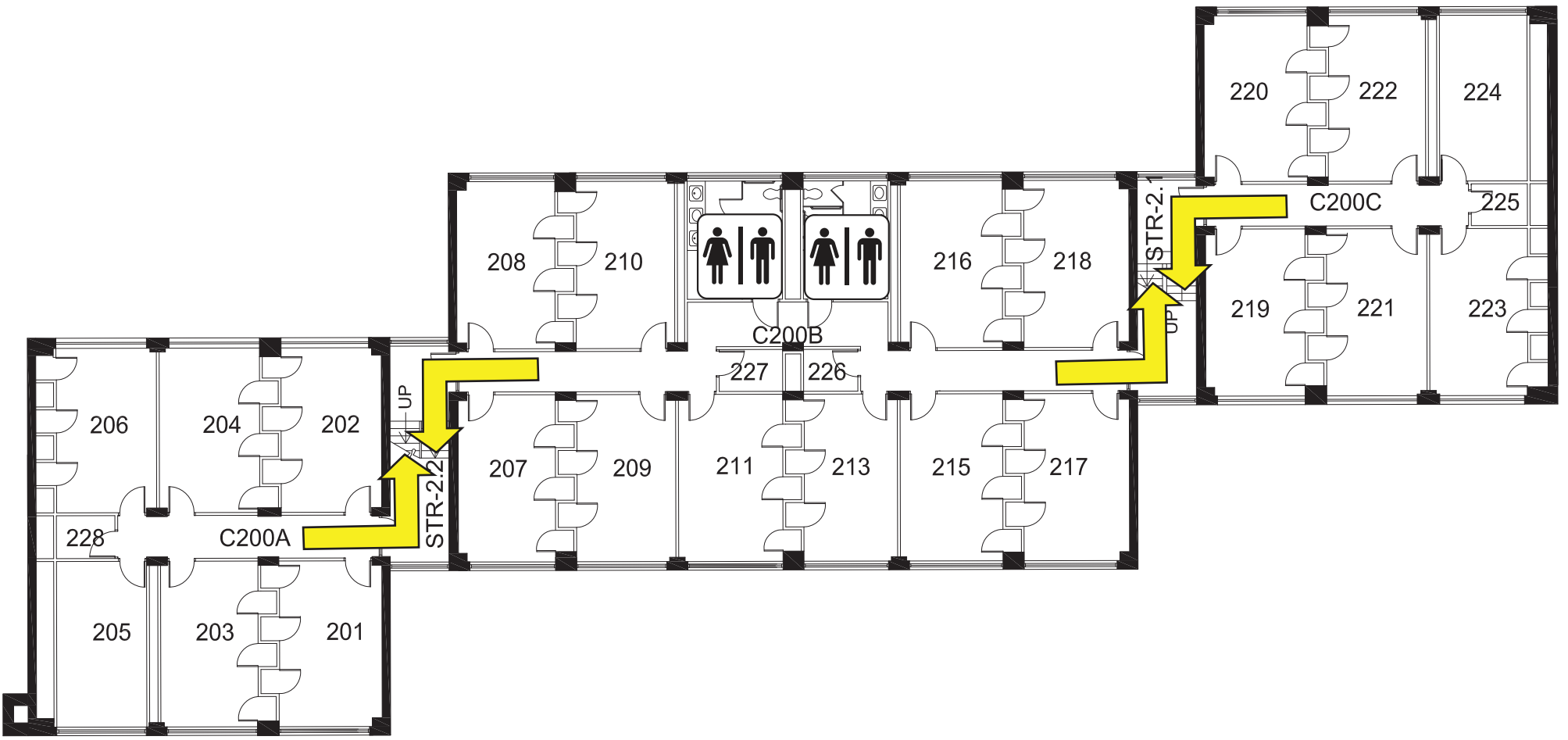
 Fire Refuge Area

 Exit

 Automated External Defibrillator


BAIN HALL

SECOND FLOOR PLAN



LEGEND

 Shelter Area

 Fire Refuge Area

 Exit

 Automated External Defibrillator

BAIN HALL

THIRD FLOOR PLAN

