



# Emergency Procedures for Pohl Recreation Center

1900 Chestnut St., Denton, TX 76201

## Shelter

You may need to take shelter for **severe weather** (most common) or a **hazardous materials release**.

During an incident requiring individuals to take **shelter**, all building occupants should immediately move to the designated Tornado Shelter Areas in the building. If unable to safely move to the designated shelter area, seek shelter in a windowless interior room or hallway on the lowest floor of the building.

- **First floor building occupants should take shelter in the locker rooms.**
- **Second floor building occupants should take shelter in the interior restrooms.**
- **Avoid standing near windows, exterior walls, and doors made of glass.**

## Evacuation

If you need to evacuate the building—for a fire, bomb threat, gas leak, or other event—all building occupants should immediately move to the nearest EXIT. Once outside, proceed to the designated Evacuation Assembly Area. If unable to safely move to the designated assembly area, contact one or more members of your department or unit to let them know you are safe and your whereabouts.

Persons with mobility impairments who are unable to safely exit the building should be moved to a designated **Fire Refuge Area** and await assistance from emergency responders. An Evacuation Chair, which is located on the second floor in the stairwells on the northwest and northeast sides of the building makes it possible for anyone **to assist someone** with reduced mobility to descend the stairs quickly. It is specifically designed so that an individual may transport a person with reduced mobility downstairs during an evacuation.

**All building occupants should immediately evacuate the building and proceed southeast to Parking Lot 4 located west of Chilton Hall.**

For more information on what to do in a specific emergency situation, refer to the UNT Emergency Guidelines on [www.emergency.unt.edu](http://www.emergency.unt.edu) or the Mean Green Ready app. **Call 911 in an emergency!**



# POHL RECREATION CENTER

## FIRST FLOOR PLAN

### LEGEND



Shelter Area



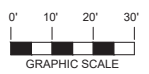
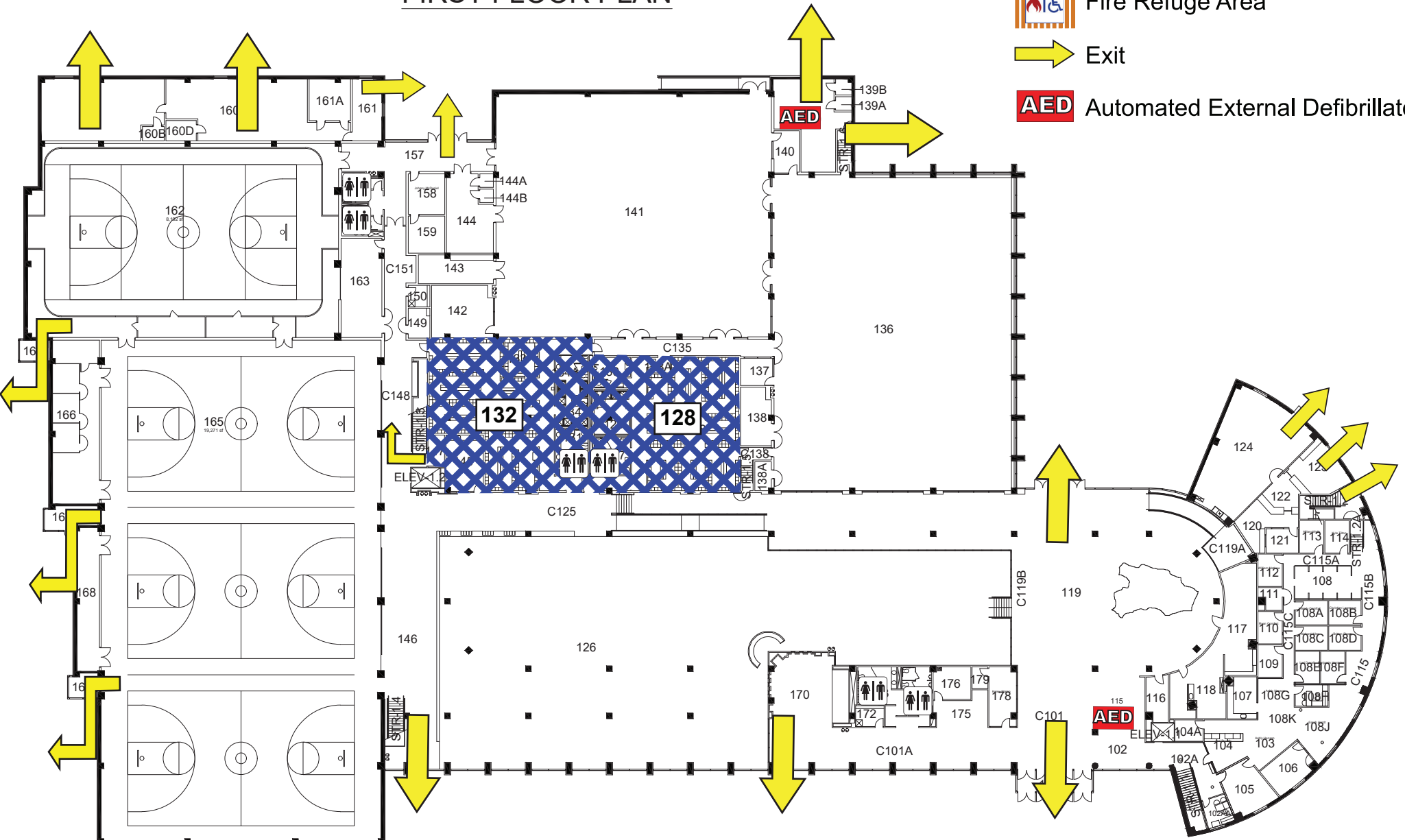
Fire Refuge Area



Exit








Automated External Defibrillator



# POHL RECREATIONAL CENTER

## SECOND FLOOR PLAN

### LEGEND

-  Shelter Area
-  Fire Refuge Area
-  Exit
-  Automated External Defibrillator
-  Evacuation Chair

