



# Emergency Procedures for Rawlins Hall

1815 Maple St., Denton, TX 76201

## Shelter

You may need to take shelter for **severe weather** (most common) or a **hazardous materials release**.

During an incident requiring individuals to take **shelter**, all building occupants should immediately move to the designated Tornado Shelter Areas in the building. If unable to safely move to the designated shelter area, seek shelter in a windowless interior room or hallway on the lowest floor of the building.

**Residents and other building occupants should take shelter in the interior hallways and restrooms of the lowest level. Avoid standing near windows, exterior walls, and doors made of glass.**

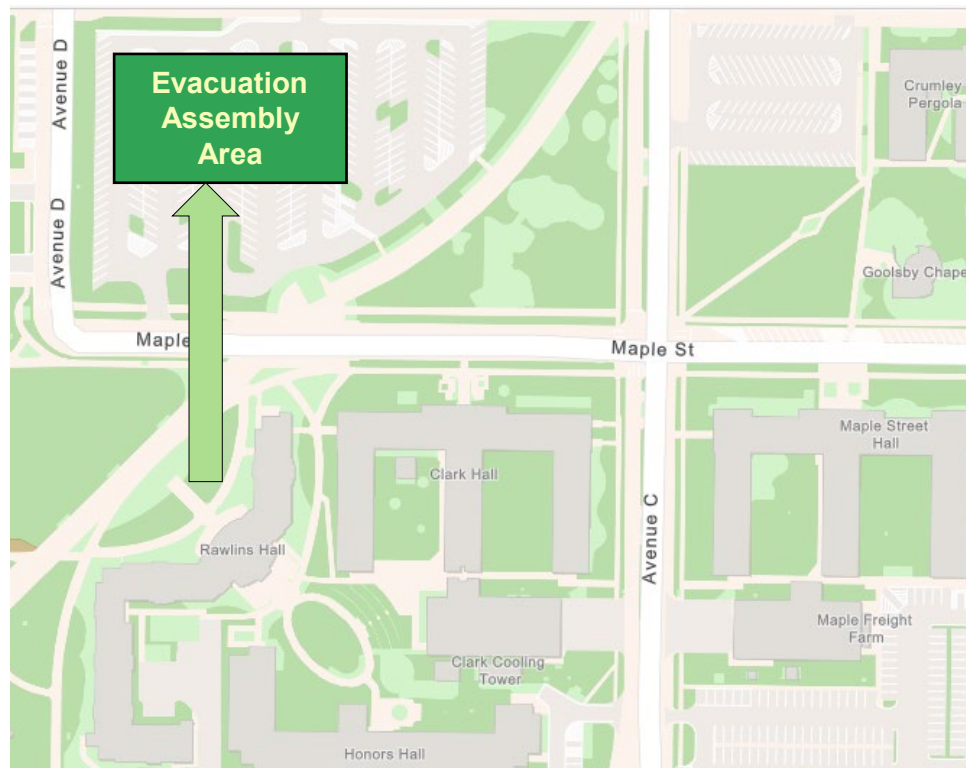
## Evacuation

If you need to evacuate the building—for a fire, bomb threat, gas leak, or other event—all building occupants should immediately move to the nearest EXIT. Once outside, proceed to the designated Evacuation Assembly Area. If unable to safely move to the designated Evacuation Assembly Area, contact your RA to let them know you are safe and inform them of your whereabouts.

Persons with mobility impairments who are unable to safely exit the building should be moved to a designated **Fire Refuge Area** and await assistance from emergency responders.

**Residents and other building occupants should congregate north to Parking Lot 27, across from Clark Park.**

For more information on what to do in a specific emergency situation, refer to the UNT Emergency Guidelines on [www.emergency.unt.edu](http://www.emergency.unt.edu) or the Mean Green Ready app. **Call 911 in an emergency!**



# LEGEND

# RAWLINS HALL

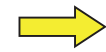
## FIRST FLOOR PLAN



Shelter Area



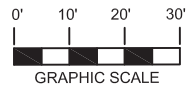
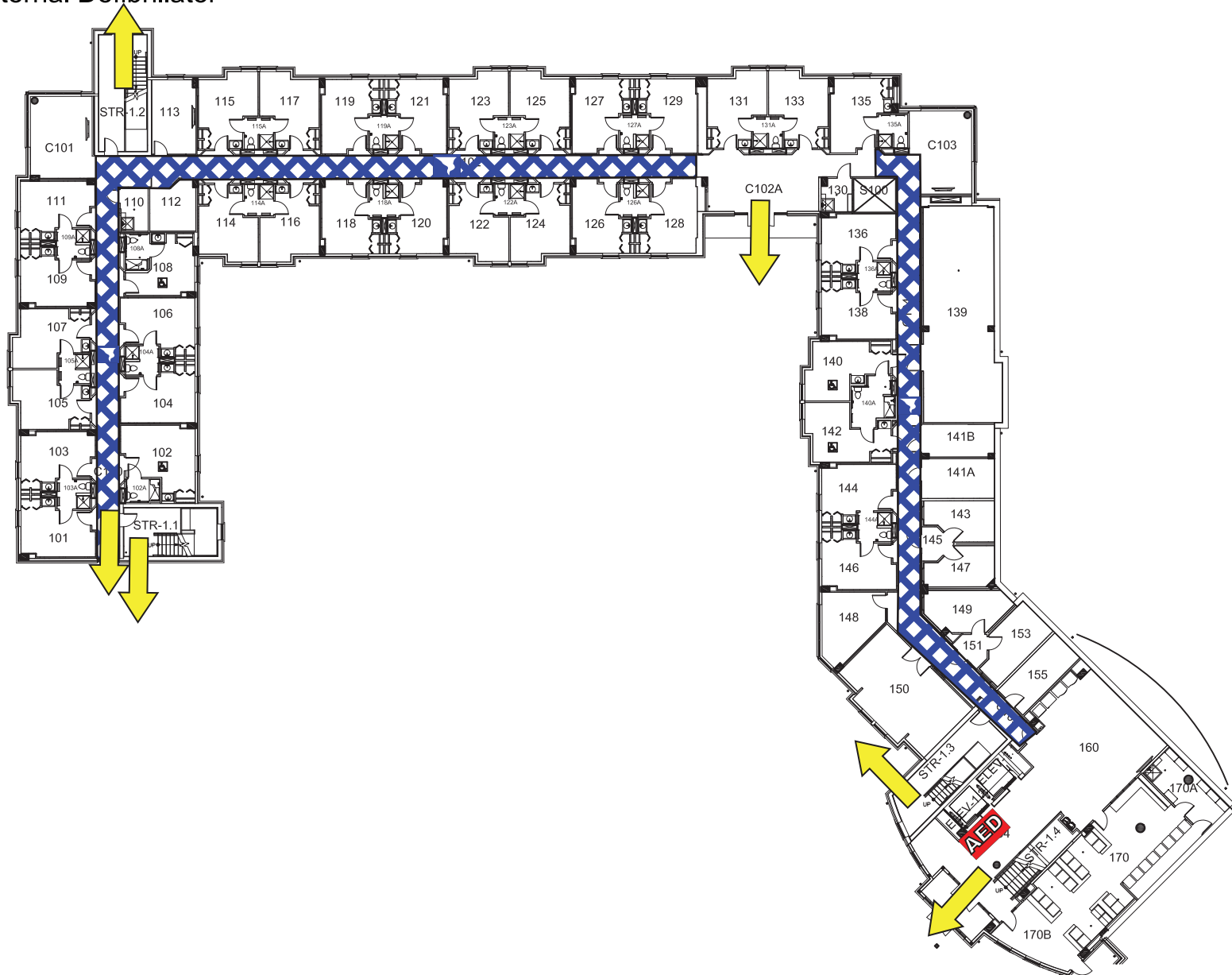
Fire Refuge Area



Exit

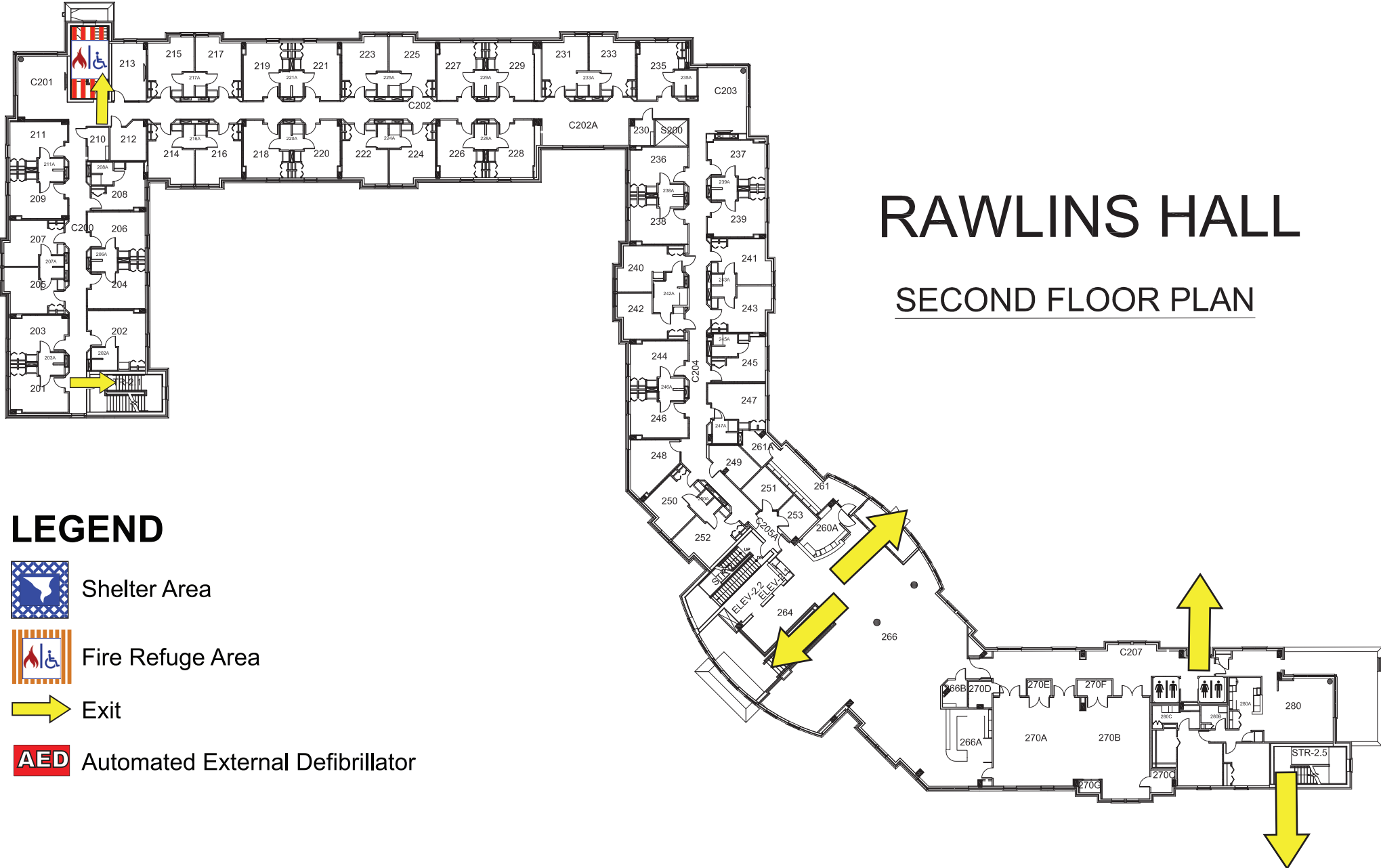


Automated External Defibrillator



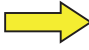



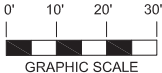
# RAWLINS HALL

## SECOND FLOOR PLAN



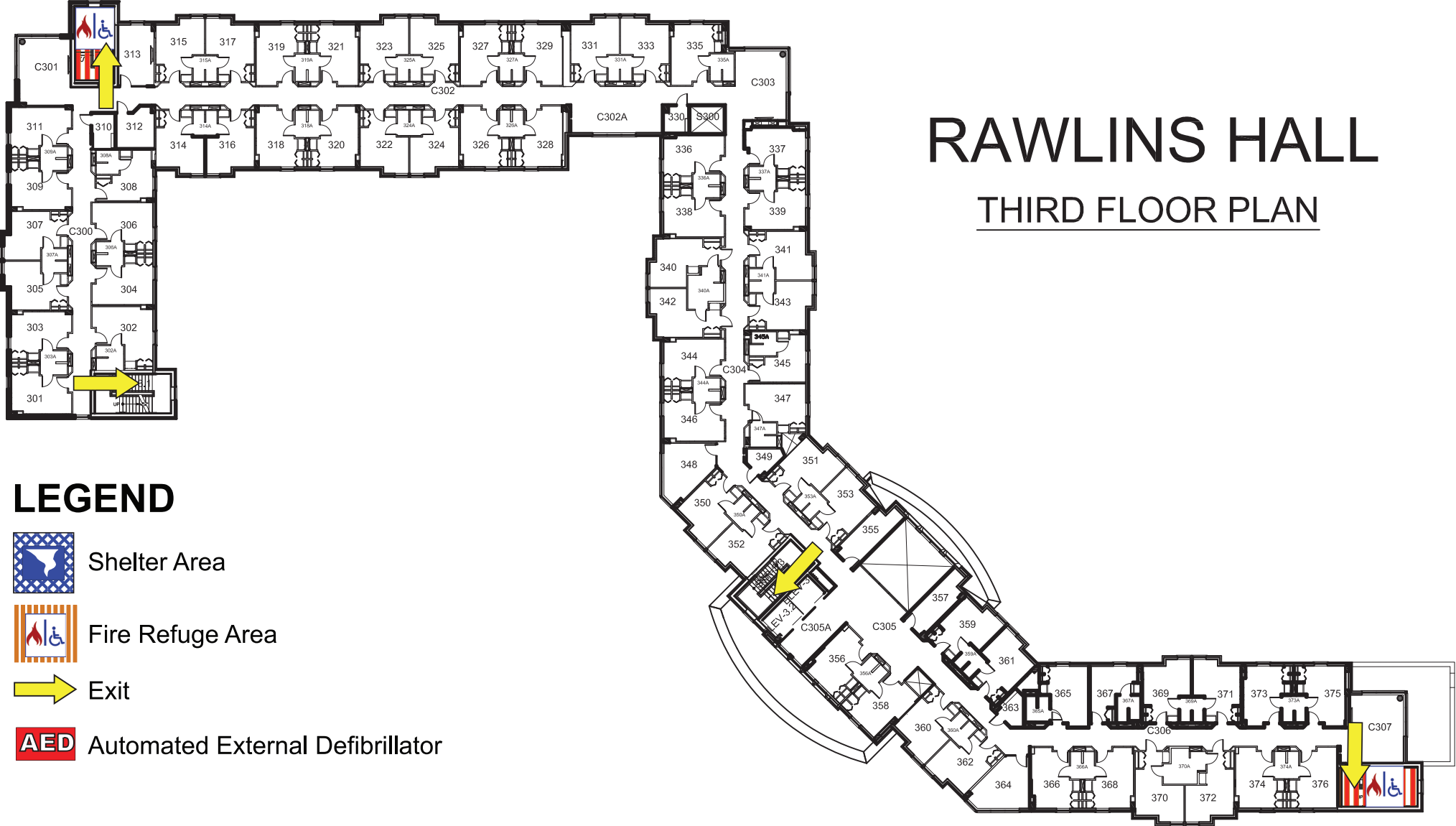
### LEGEND

-  Shelter Area
-  Fire Refuge Area
-  Exit
-  Automated External Defibrillator







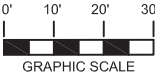
# RAWLINS HALL

## THIRD FLOOR PLAN



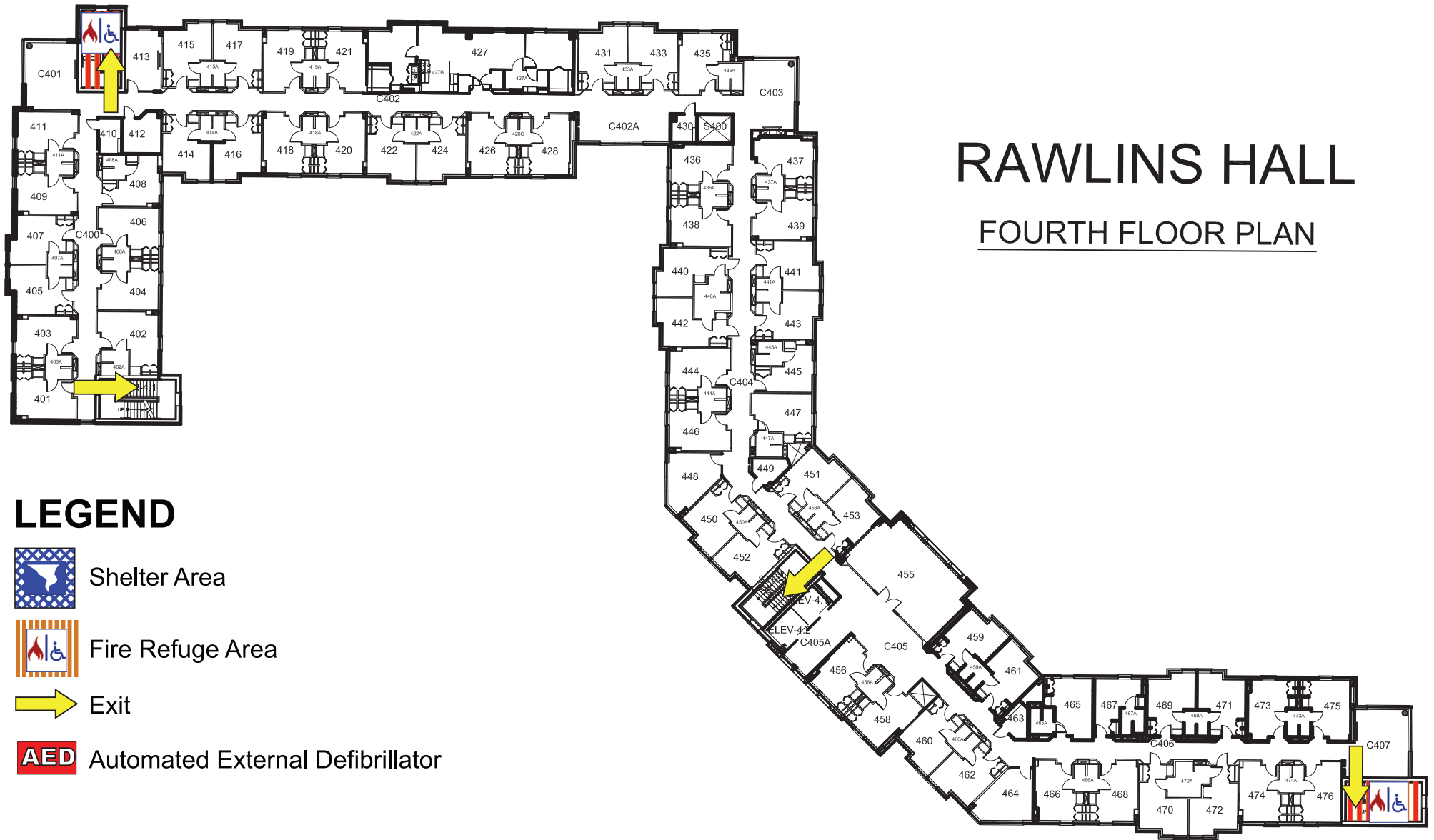
### LEGEND

-  Shelter Area
-  Fire Refuge Area
-  Exit
-  Automated External Defibrillator







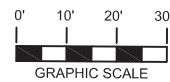
# RAWLINS HALL

## FOURTH FLOOR PLAN



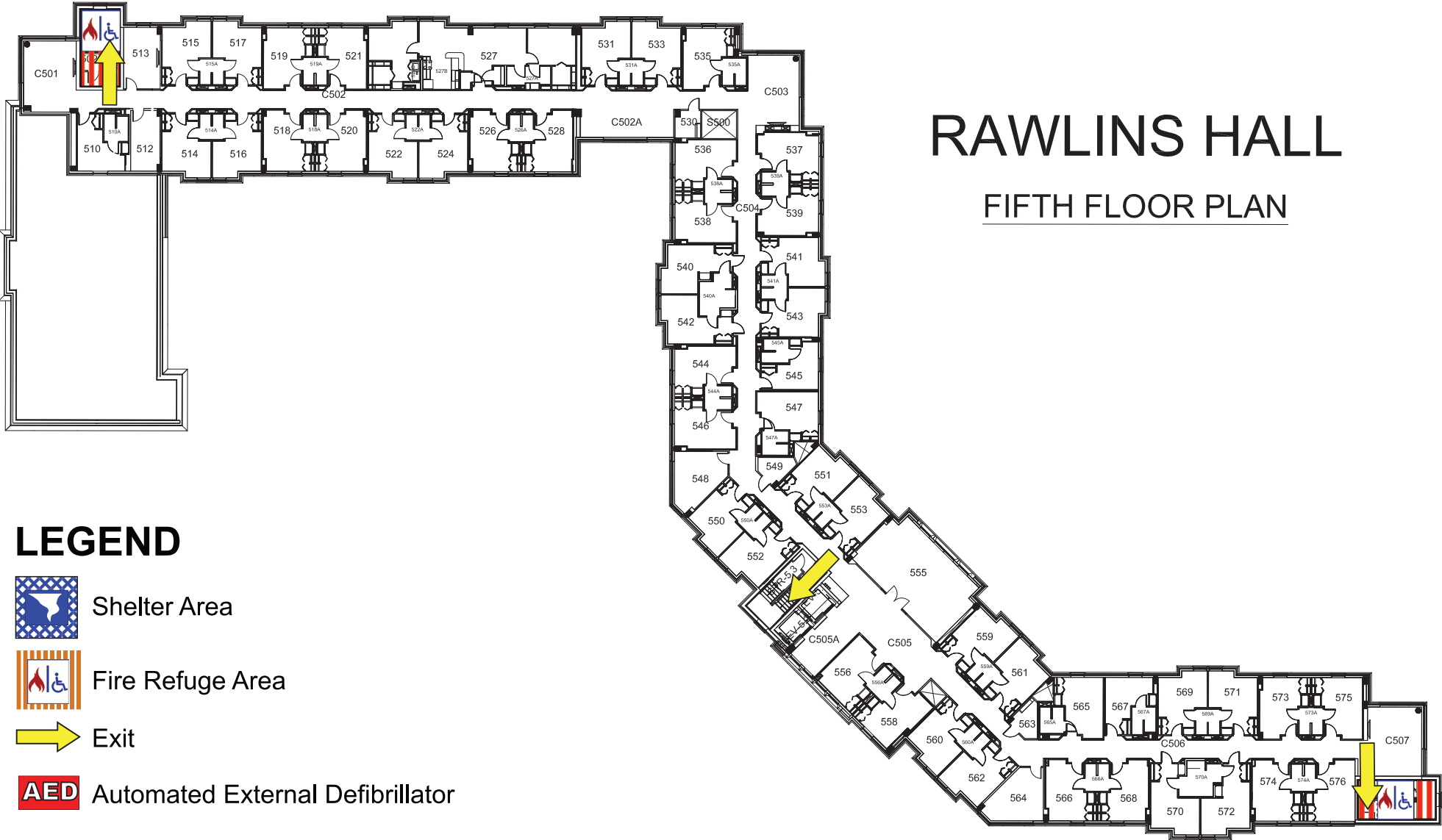
### LEGEND

-  Shelter Area
-  Fire Refuge Area
-  Exit
-  Automated External Defibrillator







# RAWLINS HALL

## FIFTH FLOOR PLAN



### LEGEND

-  Shelter Area
-  Fire Refuge Area
-  Exit
-  Automated External Defibrillator

