



Emergency Procedures for Traditions Hall

502 North Texas Blvd., Denton, TX 76201

Shelter

You may need to take shelter for **severe weather** (most common) or a **hazardous materials release**.

During an incident requiring individuals to take **shelter**, all building occupants should immediately move to the designated Tornado Shelter Areas in the building. If unable to safely move to the designated shelter area, seek shelter in a windowless interior room or hallway on the lowest floor of the building.

Residents and other building occupants should take shelter in hallways and restrooms of the lowest level of each respective wing. Avoid standing near windows, exterior walls, and doors made of glass.

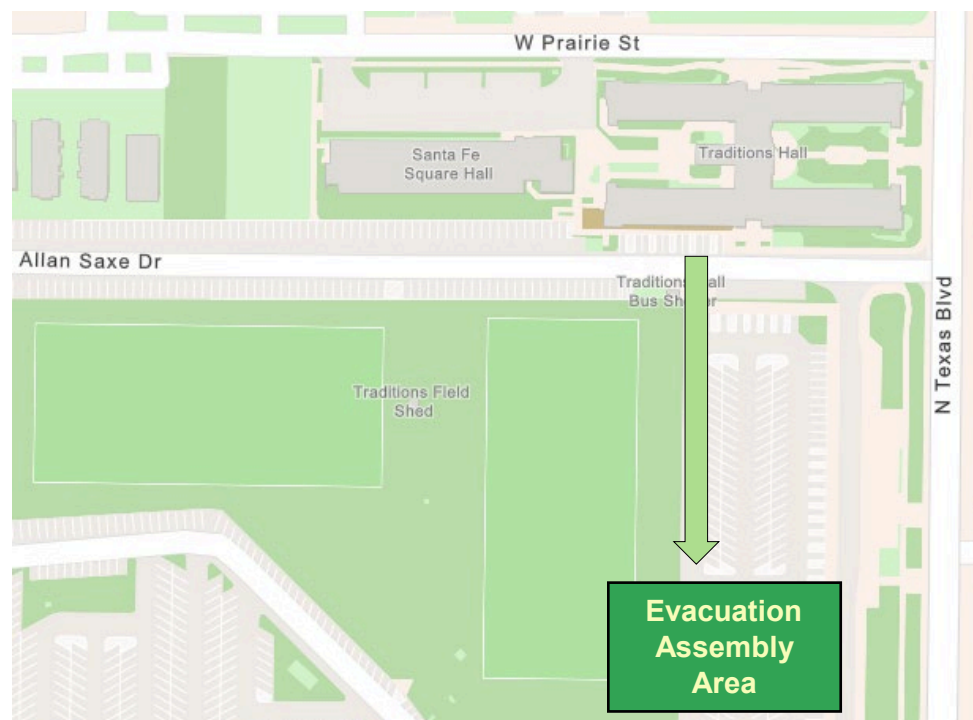
Evacuation

If you need to evacuate the building—for a fire, bomb threat, gas leak, or other event—all building occupants should immediately move to the nearest EXIT. Once outside, proceed to the designated Evacuation Assembly Area. If unable to safely move to the designated Evacuation Assembly Area, contact your RA to let them know you are safe and inform them of your whereabouts.

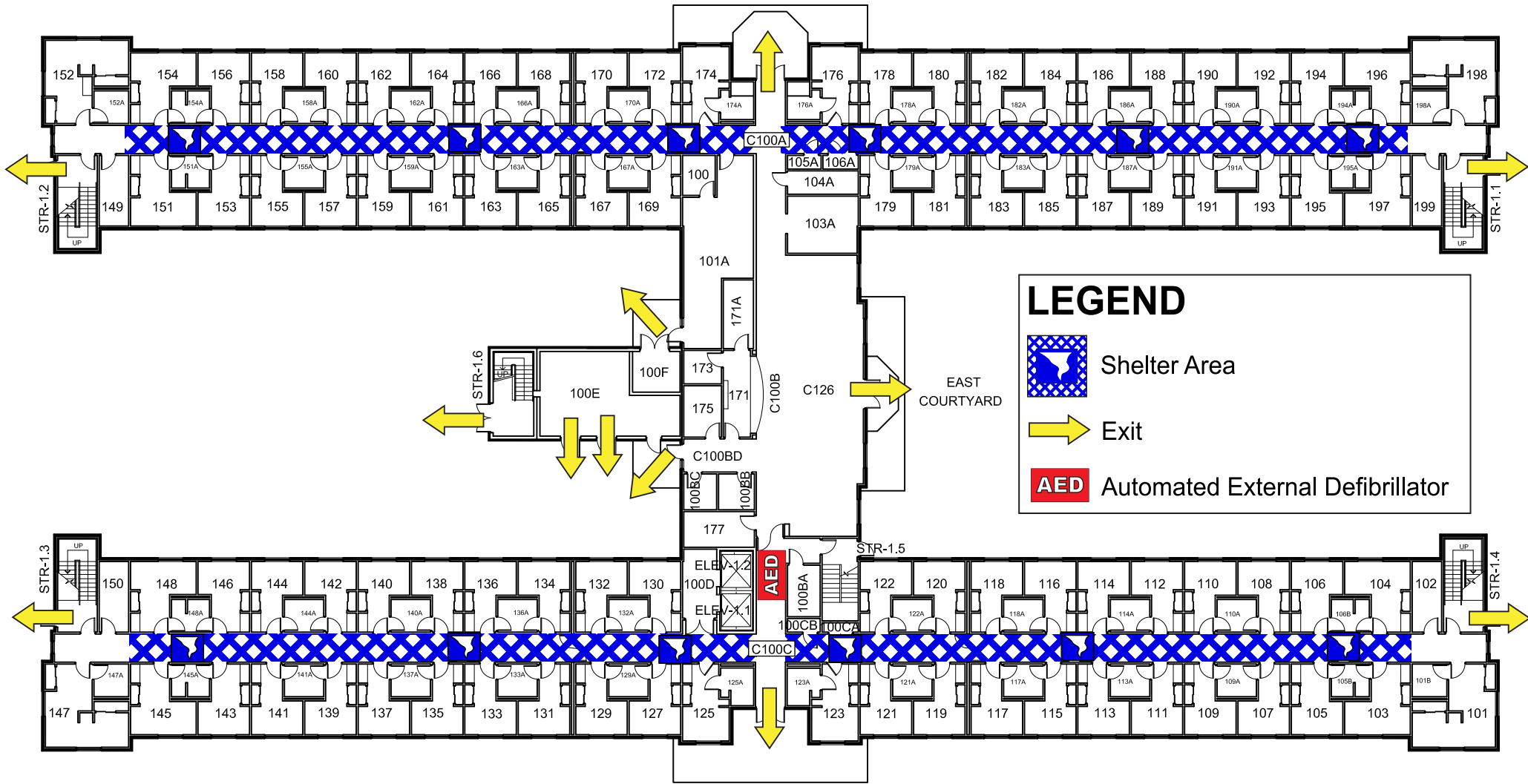
Persons with mobility impairments who are unable to safely exit the building should be moved to a designated **Area of Refuge** (also called a **Fire Refuge Area**) and await assistance from emergency responders.

Residents and other building occupants should congregate to Parking Lot 20, south of Traditions Hall.




For more information on what to do in a specific emergency situation, refer to the UNT Emergency Guidelines on www.emergency.unt.edu or the Mean Green Ready app. **Call 911 in an emergency!**



TRADITIONS HALL



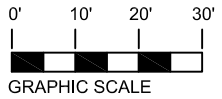
LEGEND

-  Shelter Area
-  Exit
-  AED Automated External Defibrillator

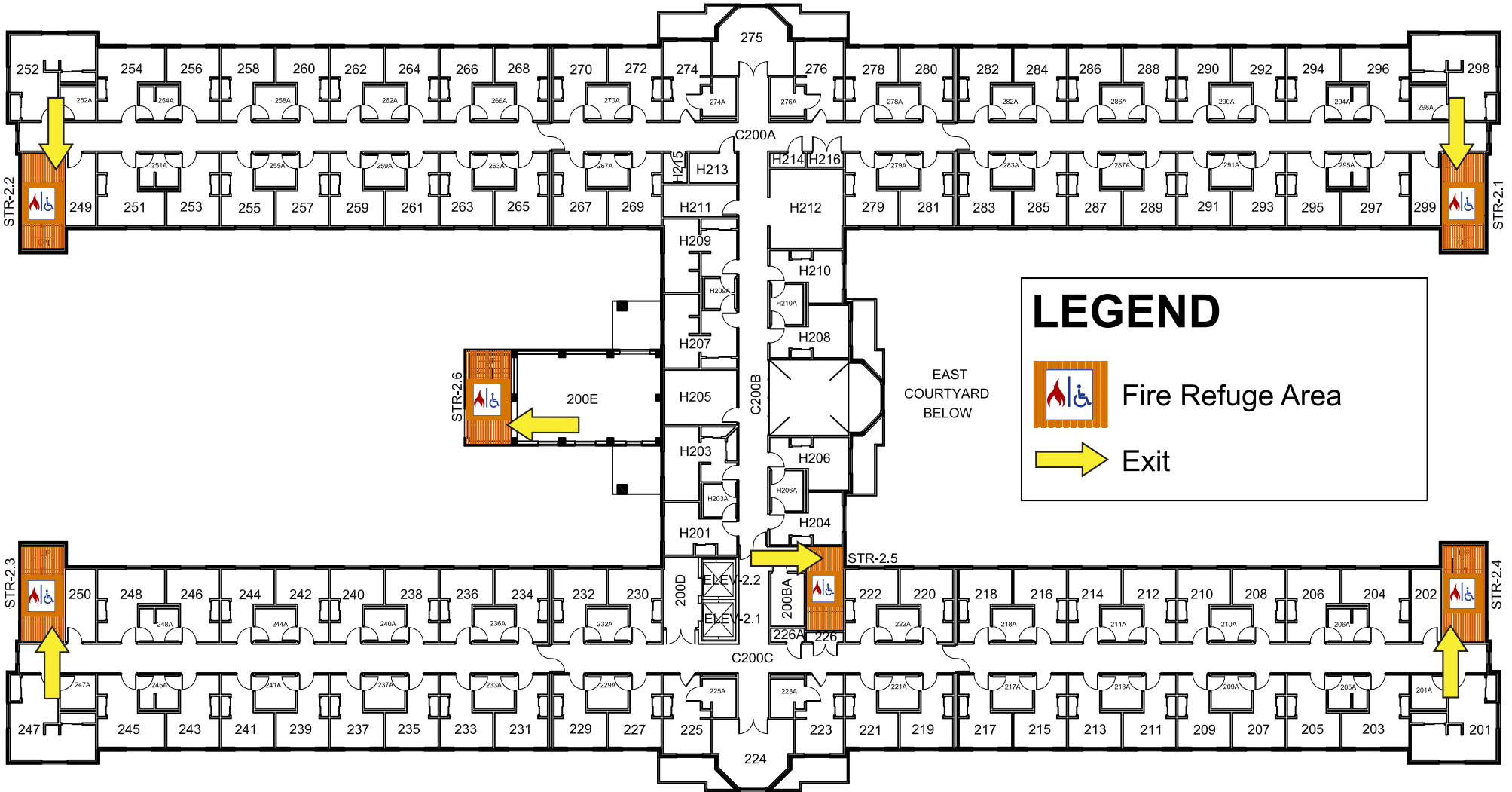
N





FIRST FLOOR PLAN



TRADITIONS HALL

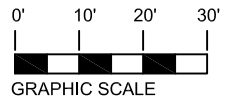


LEGEND

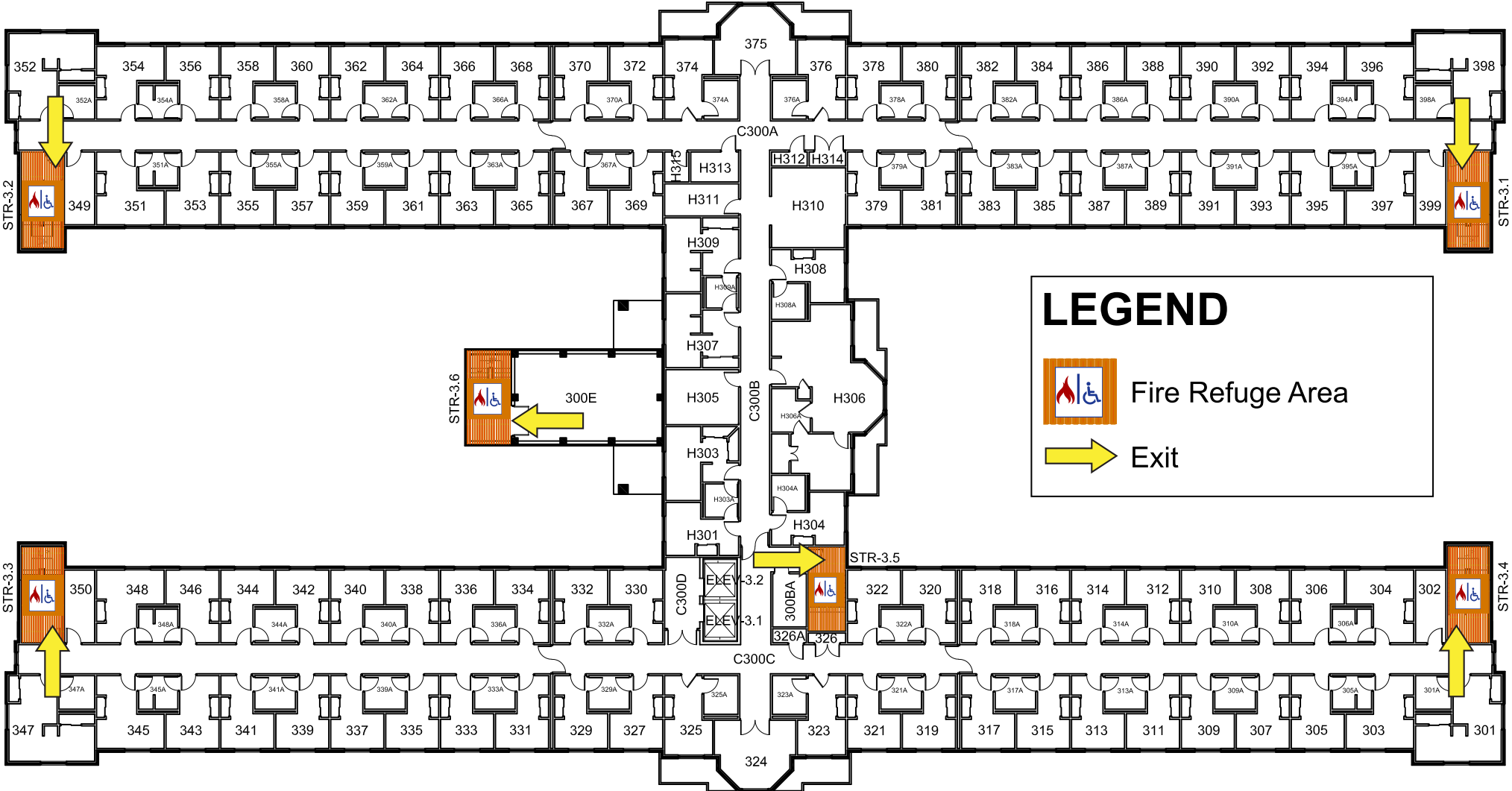
-  Fire Refuge Area
-  Exit





SECOND FLOOR PLAN



TRADITIONS HALL



LEGEND

-  Fire Refuge Area
-  Exit



THIRD FLOOR PLAN

